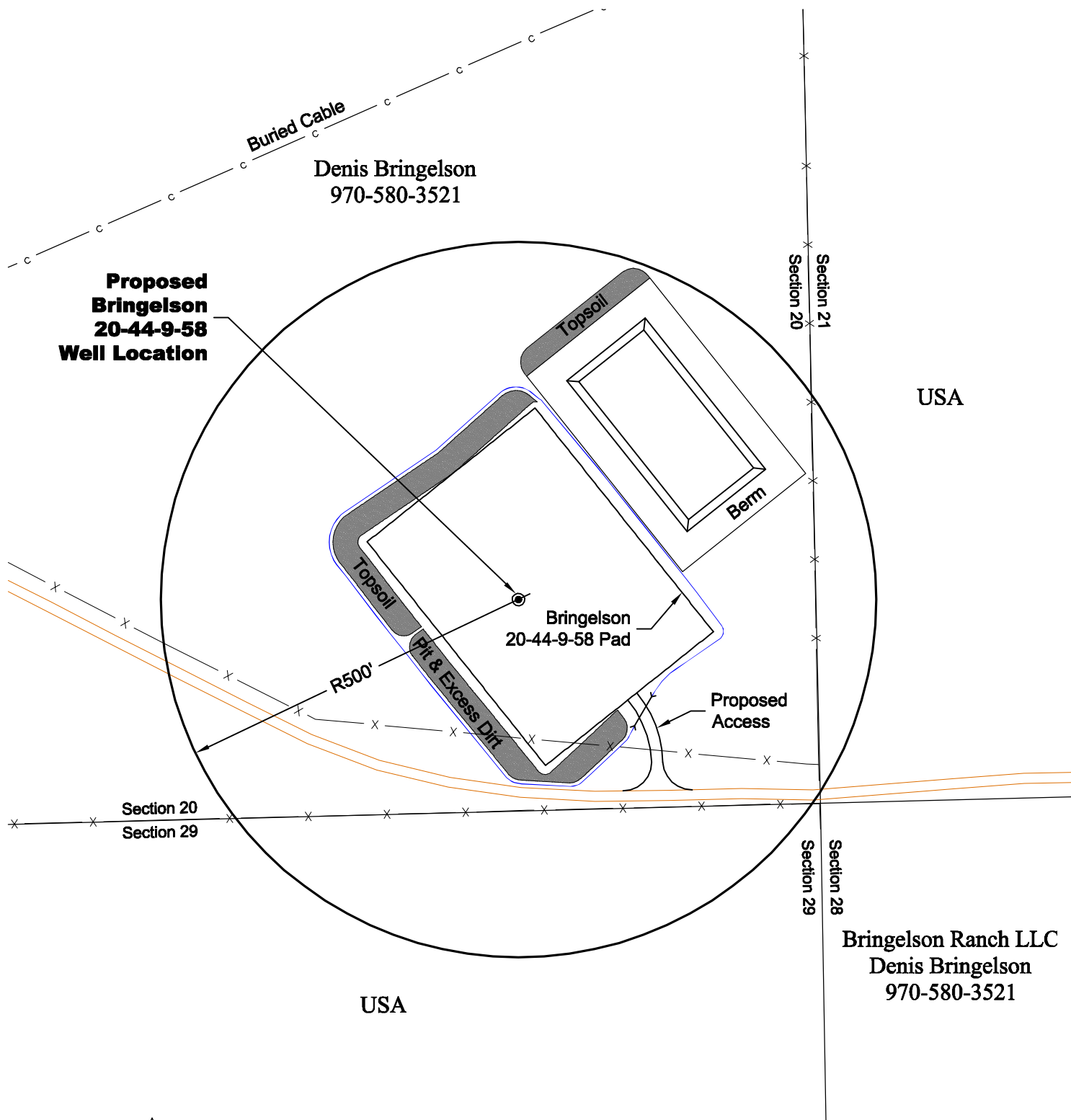


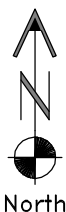
LOCATION DRAWING



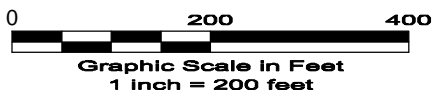
DISTURBANCE ACREAGE:
 4.2± DRILLING OPERATIONS
 2.0± FRESHWATER STORAGE PIT
 1.0± INTERIM RECLAIM

NOTE:
 ALL PRODUCTION FACILITIES WILL BE ON PAD.

5/25/11



North



LAND SURVEYING AND MAPPING
 LAFAYETTE - WINTER PARK
 Ph 303 666 0379 Fx 303 665 6320

CARRIZO OIL & GAS, INC
BRINGELSON 20-44-9-58 PAD

SE1/4 SE1/4 SEC. 20 T9N R58W
6th PM WELD COUNTY COLORADO