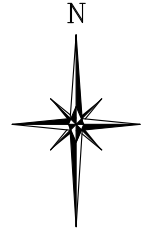
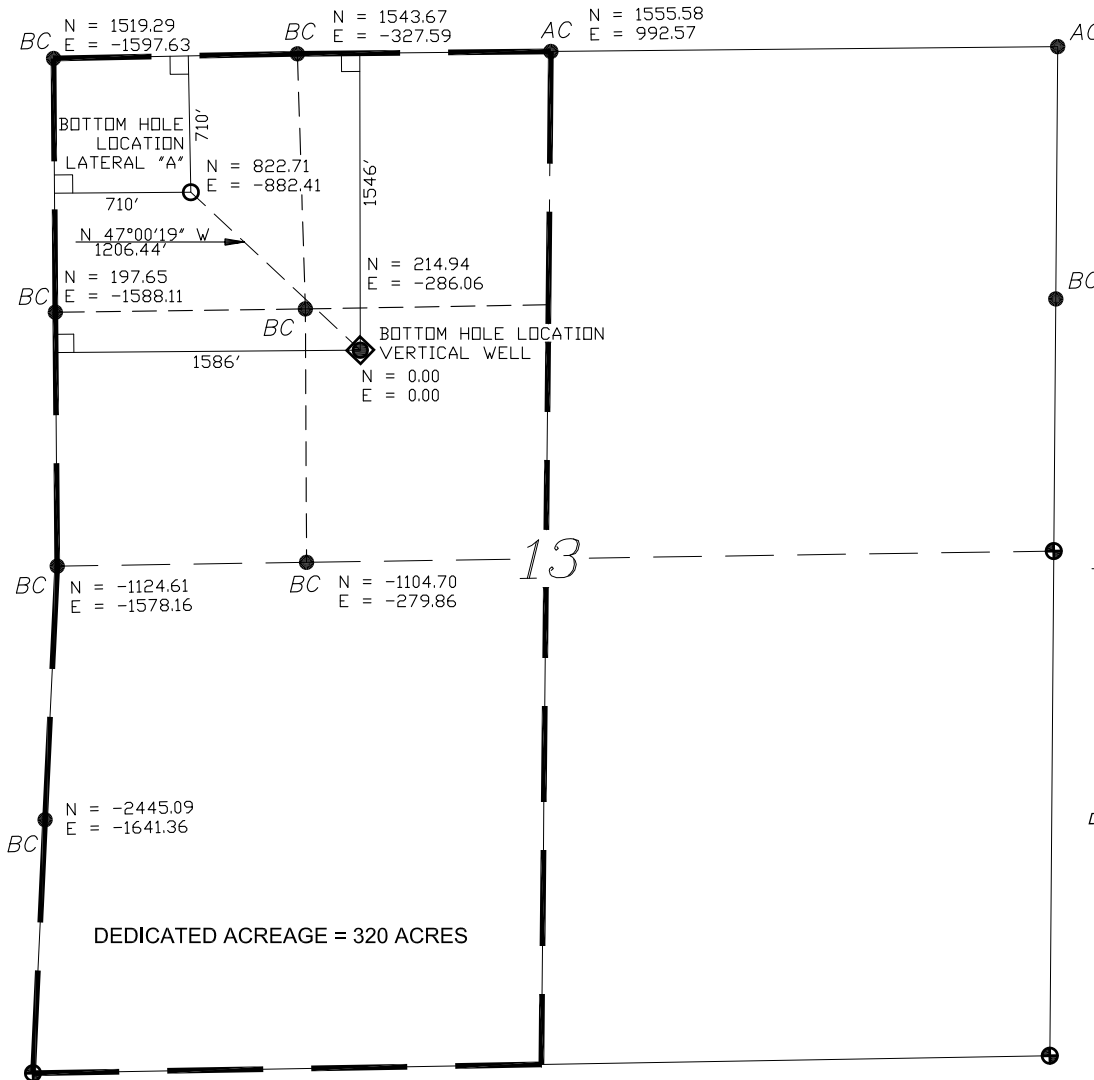


**BURLINGTON RESOURCES OIL & GAS COMPANY LP**  
**LEVEY 100 LATERAL – 1546' FNL & 1586' FWL (SURFACE)**  
**710' FNL & 710' FWL (BOTTOM HOLE LOCATION)**  
**SECTION 13, T-32-N, R-7-W, N.M.P.M., LA PLATA COUNTY, CO.**  
**GROUND ELEVATION: 6391**



SCALE: 1" = 1000'

**GEO. SURFACE VALUES**

LATITUDE (NAD83)  
 NORTH 37.0202395°  
LONGITUDE (NAD 83)  
 WEST 107.5632195°

**GEO. BOTTOM VALUES**  
 (CALCULATED BOTTOM HOLE VALUES  
 DERIVED FROM COP DESIGN FOOTAGES)

LATERAL "A"  
LATITUDE (NAD83)  
 NORTH 37.0224983°  
LONGITUDE (NAD 83)  
 WEST 107.5662410°

VERTICAL WELL  
LATITUDE (NAD83)  
 NORTH 37.0202395°  
LONGITUDE (NAD 83)  
 WEST 107.5632195°

**NOTES**

GROUND DISTANCES SHOWN

**LEGEND**

- ◆ SURFACE LOCATION
- BOTTOM HOLE LOCATION
- FOUND MOUNUMENT
- ⊕ CALCULATED CORNER
- L DENOTES 90° TIE

**BASIS OF BEARING**

GPS OBSERVATIONS AS MEASURED  
 AT SET OPUS ADJUSTED CONTROL  
 POINT "9639-BASE"



**MULTI-WELL PLAN  
 FOR  
 BURLINGTON RESOURCES OIL & GAS COMPANY LP**

P.O. BOX 3651  
 FARMINGTON, N.M.  
 (505) 334-0408

**SCALE: 1" = 1000'**  
**JOB No. 9639**  
**DATE: 6/01/11**

**1546' F/NL & 1586' F/WL, SECTION 13,  
 T. 32 N, R. 7 W, N.M.P.M.  
 LA PLATA COUNTY, COLORADO**