

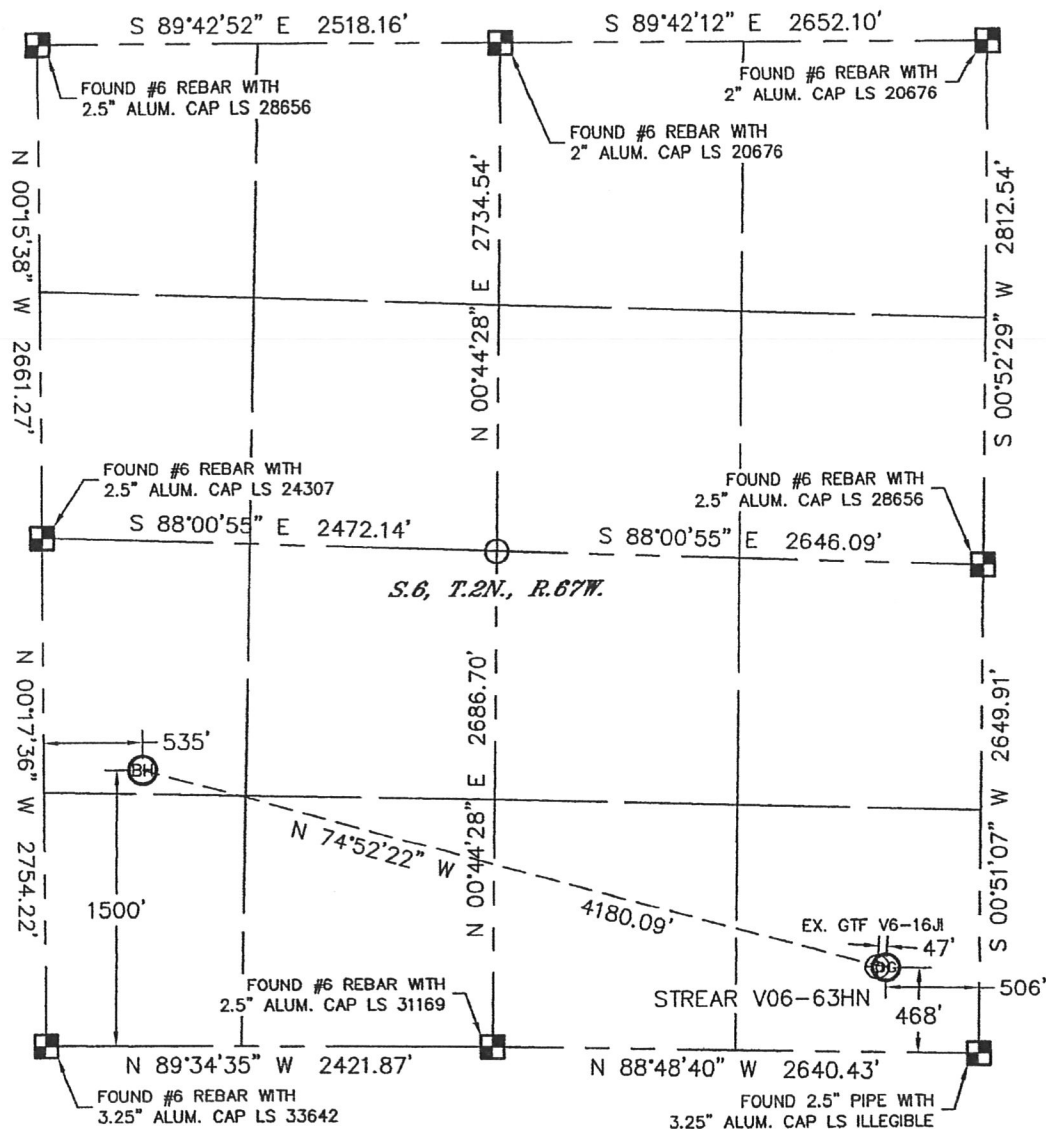
Lat40°, Inc.

1635 Foxtrail Drive, Suite 325

Loveland, CO 80538

WELL LOCATION CERTIFICATE

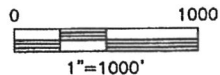
THIS MAP DOES NOT REPRESENT A BOUNDARY SURVEY

SECTION: 6
TOWNSHIP: 2N
RANGE: 67W

In accordance with a request from Erik Van Decar with Noble Energy Inc.

Lat40°, Inc. has determined the surface location of the STREAR V06-63HN to be 468' from the SOUTH line and 506' from the EAST line and the bottom hole to be 1500' from the SOUTH line and 535' from the WEST line as measured at right angles from the section lines of Section 6, Township 2 North, Range 67 West of the Sixth Principal Meridian, County of Weld, State of Colorado.

I hereby state that this Well Location Certificate was prepared by me, or under my direct supervision, that the fieldwork was completed on 4/7/11, for and on behalf of Noble Energy Inc. That this is not a Land Survey Plat or an Improvement Survey Plat, and that it is not to be relied upon for establishment of fence, building, or other future improvement lines.

**NOTE:**

- 1) Bearings shown are Grid Bearings of the Colorado State Plane Coordinate System, North Zone, North American Datum 1983/2007. The lineal dimensions as contained herein are based upon the "U.S. Survey Foot."
- 2) Ground elevations are based on an observed GPS elevation (NAVD 1988 DATUM).
- 3) NEAREST EXISTING WELL: GTF V6-16JL, 47'
- 4) IMPROVEMENTS: See LOCATION DRAWING for all visible improvements within 400' of disturbed area.
- 5) SURFACE USE: PASTURE
- 6) INSTRUMENT OPERATOR: ADAM KELLY

SURFACE LOCATION
LATITUDE: 40.16164°N
LONGITUDE: 104.92550°W
PDOP: 2.1
ELEV: 4866'
1/4, 1/4: SE1/4SE1/4
NEAREST PROPERTY LINE: 468' SOUTH

BOTTOM HOLE
LATITUDE: 40.16470°N
LONGITUDE: 104.93991°W

NOTE

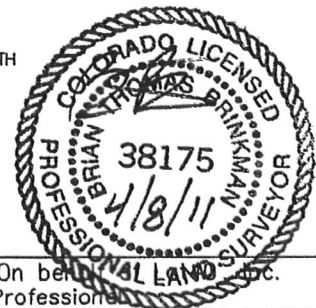
According to Colorado law, you must commence any legal action based upon any defect in this W.L.C. within three years after you discover such defect. In no event, may any action based upon any defect in this survey be commenced more than ten years after the date of the certificate shown hereon. (13-80-105 C.R.S.)

LEGEND

= ALIQUOT MONUMENT AS DESCRIBED



= CALCULATED POSITION

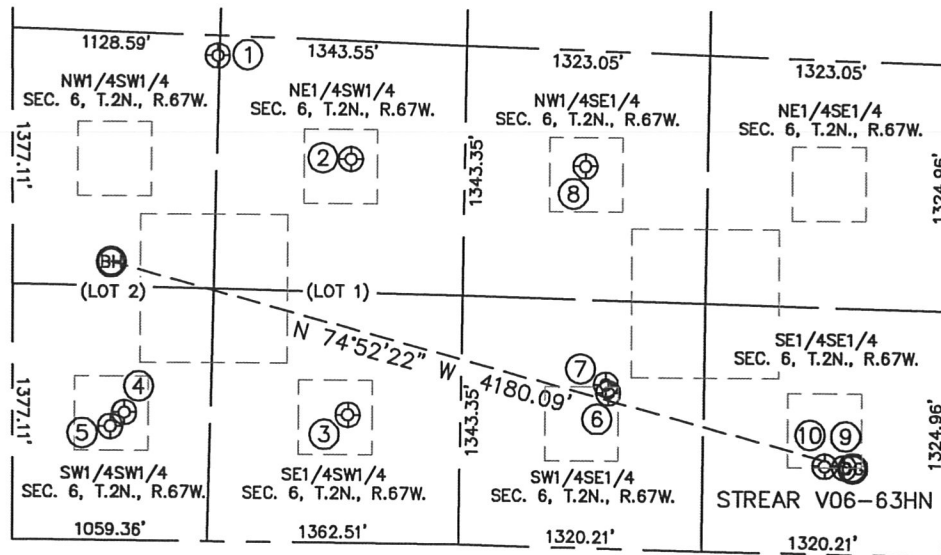


Brian T. Brinkman—On behalf of
Colorado Licensed Professional
Land Surveyor No. 38175
PROJECT#: 2011090

SITE SKETCH

STREAR V06-63HN

SECTION: 6
TOWNSHIP: 2N
RANGE: 67W



- | | | | | |
|--|---|---|--|--|
| <p>①</p> <p>COORS FEE 3-6
NW1/4SW1/4
2616' FSL
1116' FWL
LAT-40.16774°N
LONG-104.93783°W
PDOP: 2.3
ELEV: 4848'</p> | <p>②</p> <p>COORS V6-11
NE1/4SW1/4
2068' FSL
1840' FWL
LAT-40.16621°N
LONG-104.93524°W
PDOP: 3.7
ELEV: 4845'</p> | <p>③</p> <p>COORS V6-14JI
SE1/4SW1/4
692' FSL
1823' FWL
LAT-40.16244°N
LONG-104.93531°W
PDOP: 3.5
ELEV: 4847'</p> | <p>④</p> <p>COORS V6-13
SW1/4SW1/4
691' FSL
606' FWL
LAT-40.16248°N
LONG-104.93966°W
PDOP: 1.6
ELEV: 4846'</p> | <p>⑤</p> <p>COORS V6-13JI
SW1/4SW1/4
616' FSL
531' FWL
LAT-40.16228°N
LONG-104.93993°W
PDOP: 2.8
ELEV: 4847'</p> |
| <p>⑥</p> <p>STREAR V06-23D
SW1/4SE1/4
838' FSL
1841' FEL
LAT-40.16275°N
LONG-104.93025°W
PDOP: 1.8
ELEV: 4862'</p> | <p>⑦</p> <p>GTF RED V6-4D
SW1/4SE1/4
883' FSL
1855' FEL
LAT-40.16288°N
LONG-104.93030°W
PDOP: 1.3
ELEV: 4862'</p> | <p>⑧</p> <p>NELSON RED V6-10
NW1/4SE1/4
2055' FSL
1987' FEL
LAT-40.16610°N
LONG-104.93068°W
PDOP: 1.2
ELEV: 4853'</p> | <p>⑨</p> <p>GTF V6-16JI
SE1/4SE1/4
470' FSL
553' FEL
LAT-40.16165°N
LONG-104.92567°W
PDOP: 1.1
ELEV: 4866'</p> | <p>⑩</p> <p>GTF RED V6-16
SE1/4SE1/4
475' FSL
659' FEL
LAT-40.16167°N
LONG-104.92605°W
PDOP: 2.0
ELEV: 4870'</p> |

