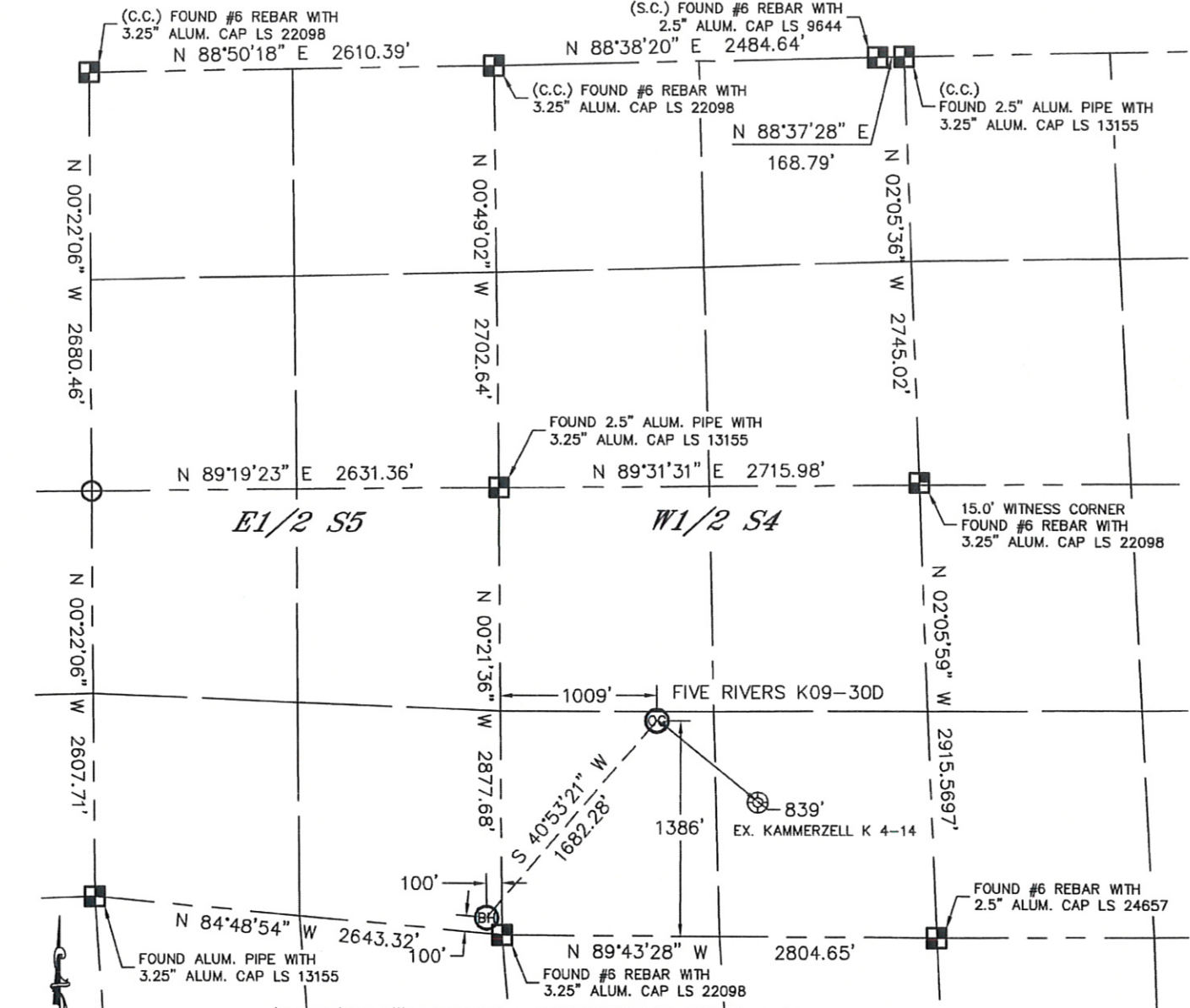


# WELL LOCATION CERTIFICATE

SECTION: 4 & 5  
TOWNSHIP: 4N  
RANGE: 66W

THIS MAP DOES NOT REPRESENT A BOUNDARY SURVEY



In accordance with a request from BRIAN DEROSE with Noble Energy Inc. Lat40°, LLC has determined the surface location of the FIVE RIVERS K09-30D to be 1386' from the SOUTH line and 1009' from the WEST line as measured at right angles from the section lines of Section 4, Township 4 North, Range 66 West and the bottom hole to be 100' from the SOUTH line and 100' from the EAST line as measured at right angles from the section lines of Section 5, Township 4 North, Range 66 West of the Sixth Principal Meridian, County of Weld, State of Colorado.

I hereby state that this Well Location Certificate was prepared by me, or under my direct supervision, that the fieldwork was completed on 9/30/10, for and on behalf of Noble Energy Inc. That this is not a Land Survey Plat or an Improvement Survey Plat, and that it is not to be relied upon for establishment of fence, building, or other future improvement lines.

**NOTE:**

- 1) Bearings shown are Grid Bearings of the Colorado State Plane Coordinate System, North Zone, North American Datum 1983/2007. The lineal dimensions as contained herein are based upon the "U.S. Survey Foot."
- 2) Ground elevations are based on an observed GPS elevation (NAVD 1988 DATUM).
- 3) NEAREST EXISTING WELL: KAMMERZELL K 4-14, 839'
- 4) IMPROVEMENTS: See LOCATION DRAWING for all visible improvements within 400' of disturbed area.
- 5) SURFACE USE: RANGELAND
- 6) INSTRUMENT OPERATOR: BRIAN BRINKMAN

**NOTE**

According to Colorado law, you must commence any legal action based upon any defect in this W.L.C. within three years after you discover such defect. In no event, may any action based upon any defect in this survey be commenced more than ten years after the date of the certificate shown hereon. (13-80-105 C.R.S.)

## LEGEND

- = ALIQUOT MONUMENT AS DESCRIBED
- = CALCULATED POSITION

SURFACE LOCATION  
LATITUDE: 40.33741°N  
LONGITUDE: 104.78979°W  
PDOP: 1.4  
ELEV: 4693'  
1/4, 1/4: SW1/4SW1/4  
NEAREST PROPERTY LINE: 372' EAST  
(RR ROW 99' SOUTH)

BOTTOM HOLE  
LATITUDE: 40.33395°N  
LONGITUDE: 104.79378°W

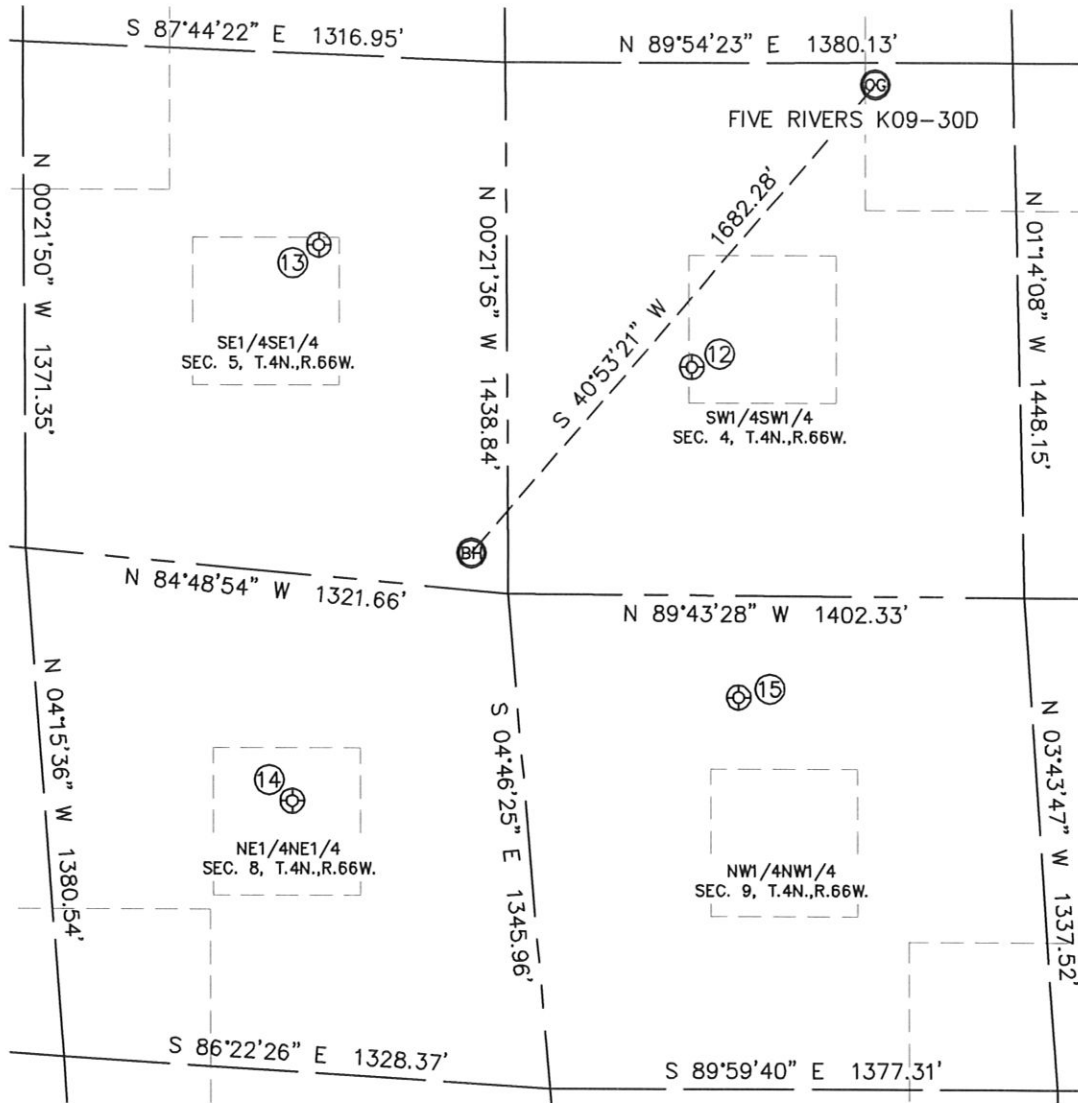


Brian T. Brinkman—On behalf of Lat40°  
Colorado Licensed Professional Surveyor  
Land Surveyor No. 38175

# SITE SKETCH

FIVE RIVERS K09-30D

SECTION: 4 & 5  
TOWNSHIP: 4N  
RANGE: 66W



⑫

KAMMERZELL 13-4  
SW1/4SW1/4  
618' FSL  
503' FWL  
LAT-40.33532°N  
LONG-104.79161°W  
PDOP: 1.4  
ELEV: 4694

⑬

KAMMERZELL 5-16  
SE1/4SE1/4  
892' FSL  
512' FEL  
LAT-40.33624°N  
LONG-104.79525°W  
PDOP: 1.5  
ELEV: 4695

⑭

KAMMERZELL 1-8  
NE1/4NE1/4  
614' FNL  
634' FEL  
LAT-40.33211°N  
LONG-104.79555°W  
PDOP: 2.1  
ELEV: 4698

⑮

KEITH 1  
NW1/4NW1/4  
277' FNL  
602' FWL  
LAT-40.33286°N  
LONG-104.79118°W  
PDOP: 1.8  
ELEV: 4693

