

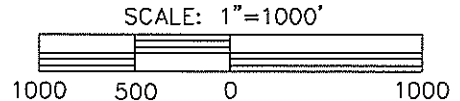
BAKER & ASSOCIATES

Engineers * Surveyors

LOCATED IN THE SW1/4NW1/4 OF
SECTION 16, T6N, R90W OF THE
6TH P.M., MOFFAT COUNTY, COLORADO

WELL -
HRM RESOURCES, LLC
STATE 12-16

1790 W. Victory Way - Craig, Colorado 81625
Telephone (970) 824-3435
FAX (970) 824-3102



LEGEND

- FOUND MONUMENT
- ⊕ WELL LOCATION
- └ 90° SYMBOL
- ⊙ CALCULATED CORNER



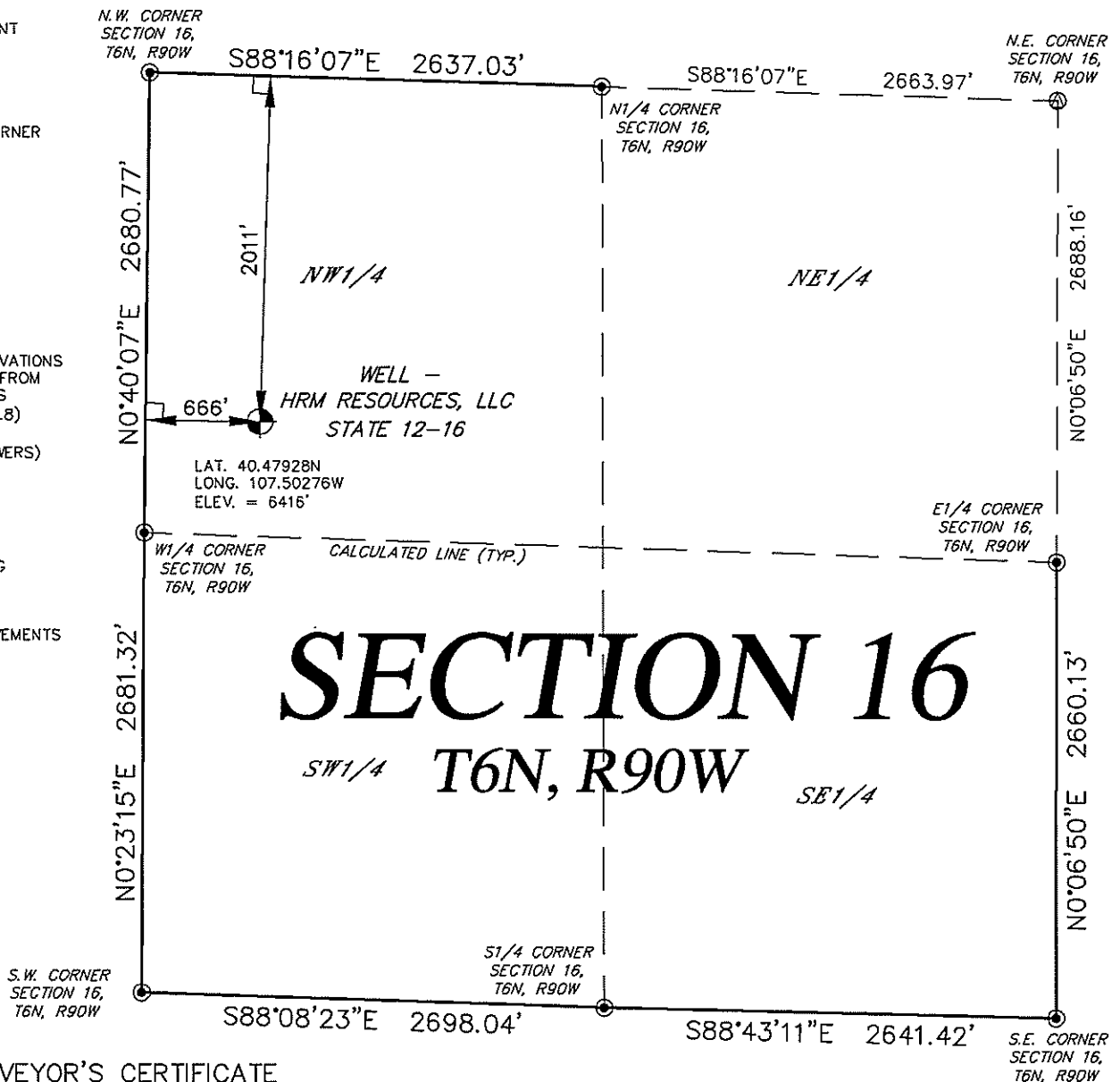
BASIS OF BEARINGS,
DISTANCES AND ELEVATIONS
SHOWN ARE TAKEN FROM
G.P.S. OBSERVATIONS
(NAD 83)(PDOP - 1.8)
(APRIL 22, 2011)
(OPERATOR- B. POWERS)

SURFACE USE

AGRICULTURAL
LIVESTOCK GRAZING

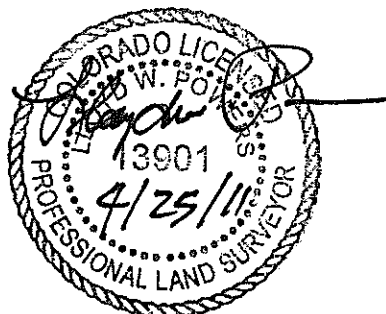
IMPROVEMENTS

NO VISIBLE IMPROVEMENTS
WITHIN 400 FEET.



LAND SURVEYOR'S CERTIFICATE

I, Lloyd W. Powers being a duly registered Professional Land Surveyor do hereby certify that this survey was made by me or under my direct supervision and is based upon my professional knowledge, information and belief and conforms with the applicable standards of practice in the State of Colorado. This certificate does not constitute a guaranty or warranty, either expressed or implied.



Lloyd W. Powers, PLS
Colorado Reg. No. 13901