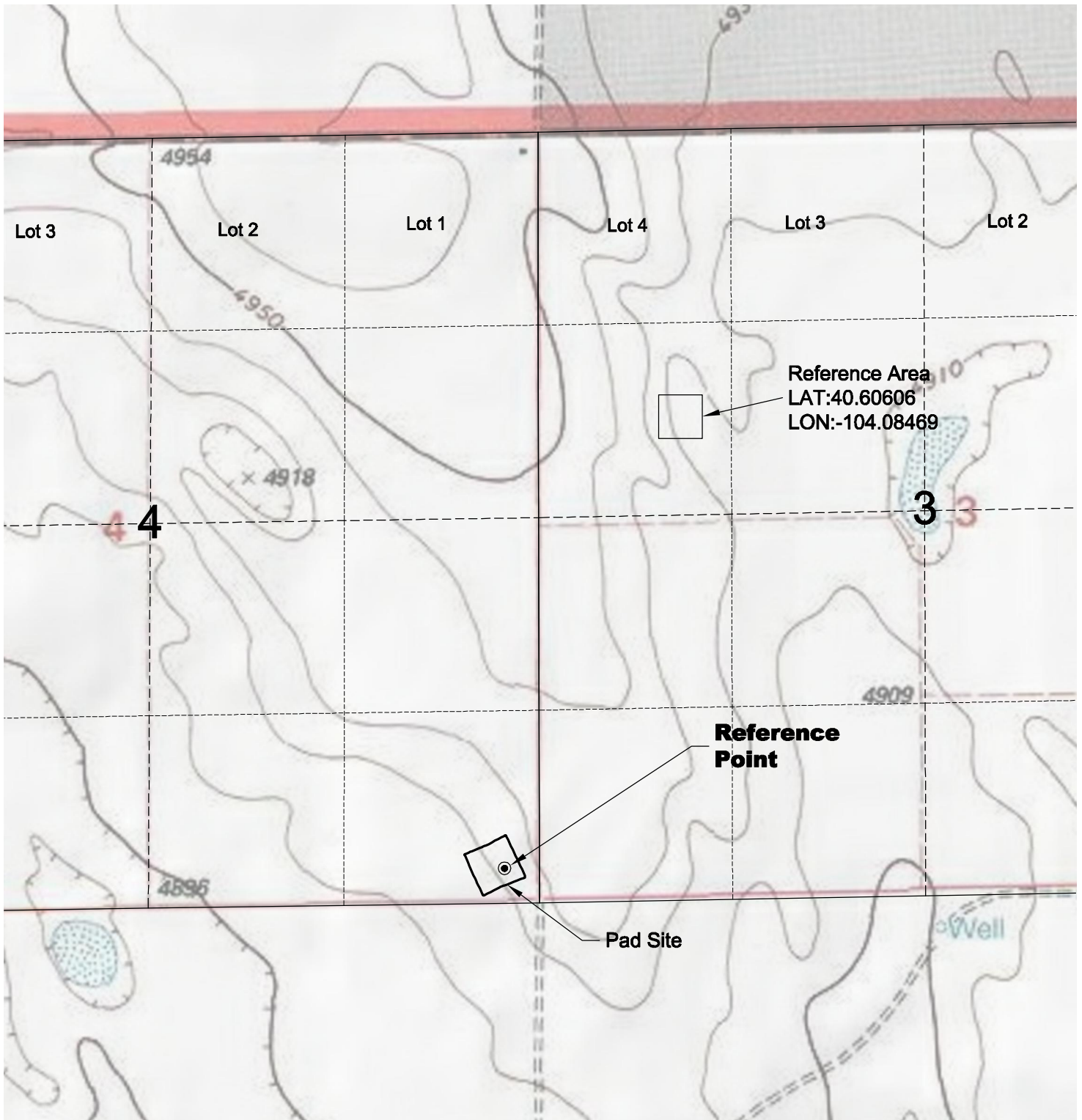
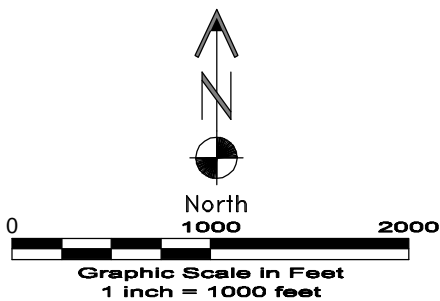


REFERENCE AREA MAP



DWG: G:\GEO SURV\Weld\North\Corriza 110004\Well\Plate\Peramos 4-44-7-60 .320\Peramos 4-44-7-60 F2A.dwg USER: MTC DATE: Mar 21, 2011 9:47am






LAND SURVEYING AND MAPPING
LAFAYETTE - WINTER PARK
 Ph 303 666 0379 Fx 303 665 6320

CARRIZO OIL & GAS, INC
PERGAMOS 4-44-7-60 PAD

SE1/4 SE1/4 SEC. 4 T7N R60W
6th PM WELD COUNTY COLORADO

3/21/11