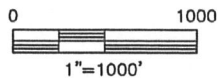
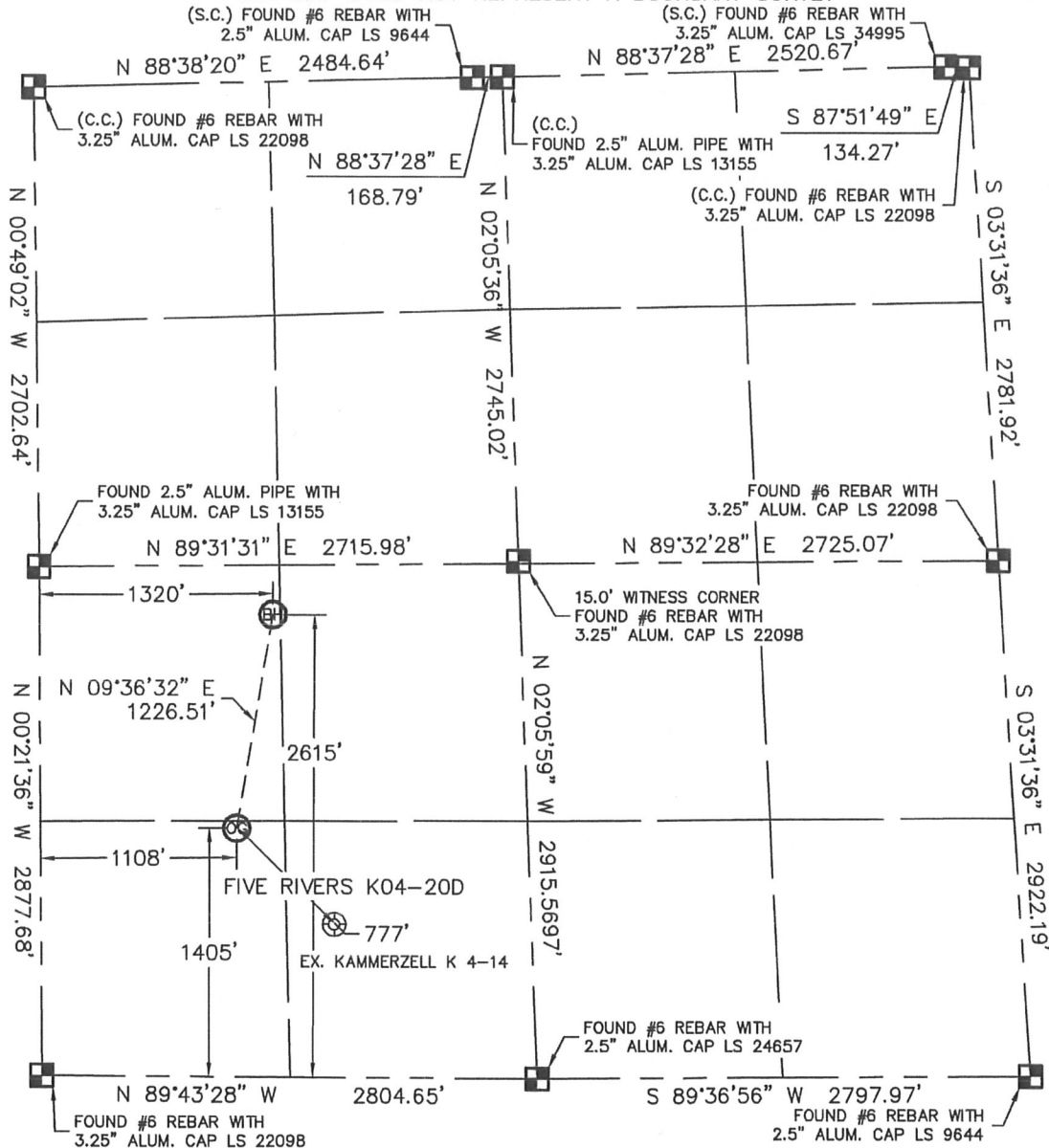


WELL LOCATION CERTIFICATE

SECTION: 4
TOWNSHIP: 4N
RANGE: 66W

THIS MAP DOES NOT REPRESENT A BOUNDARY SURVEY



In accordance with a request from BRIAN DEROSE with Noble Energy Inc. Lat40°, LLC has determined the surface location of the FIVE RIVERS K04-20D to be 1405' from the SOUTH line and 1108' from the WEST line and the bottom hole to be 2615' from the SOUTH line and 1320' from the WEST line as measured at right angles from the section lines of Section 4, Township 4 North, Range 66 West of the Sixth Principal Meridian, County of Weld, State of Colorado.

I hereby state that this Well Location Certificate was prepared by me, or under my direct supervision, that the fieldwork was completed on 9/30/10, for and on behalf of Noble Energy Inc. That this is not a Land Survey Plat or an Improvement Survey Plat, and that it is not to be relied upon for establishment of fence, building, or other future improvement lines.

NOTE:

- 1) Bearings shown are Grid Bearings of the Colorado State Plane Coordinate System, North Zone, North American Datum 1983/2007. The lineal dimensions as contained herein are based upon the "U.S. Survey Foot."
- 2) Ground elevations are based on an observed GPS elevation (NAVD 1988 DATUM).
- 3) NEAREST EXISTING WELL: KAMMERZELL K 4-14, 777'
- 4) IMPROVEMENTS: See LOCATION DRAWING for all visible improvements within 400' of disturbed area.
- 5) SURFACE USE: RANGELAND
- 6) INSTRUMENT OPERATOR: BRIAN BRINKMAN

SURFACE LOCATION
LATITUDE: 40.33746°N
LONGITUDE: 104.78944°W
PDOP: 1.4
ELEV: 4691'
1/4, 1/4: SW1/4SW1/4
NEAREST PROPERTY LINE: 273' EAST
(RR ROW 104' SOUTH)

BOTTOM HOLE
LATITUDE: 40.34078°N
LONGITUDE: 104.78867°W

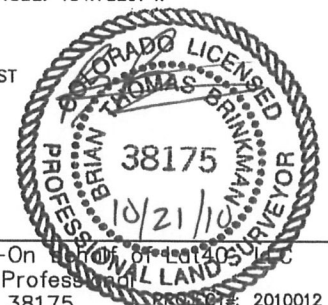
NOTE

According to Colorado law, you must commence any legal action based upon any defect in this W.L.C. within three years after you discover such defect. In no event, may any action based upon any defect in this survey be commenced more than ten years after the date of the certificate shown hereon. (13-80-105 C.R.S.)

LEGEND

- = ALIQUOT MONUMENT AS DESCRIBED
- = CALCULATED POSITION

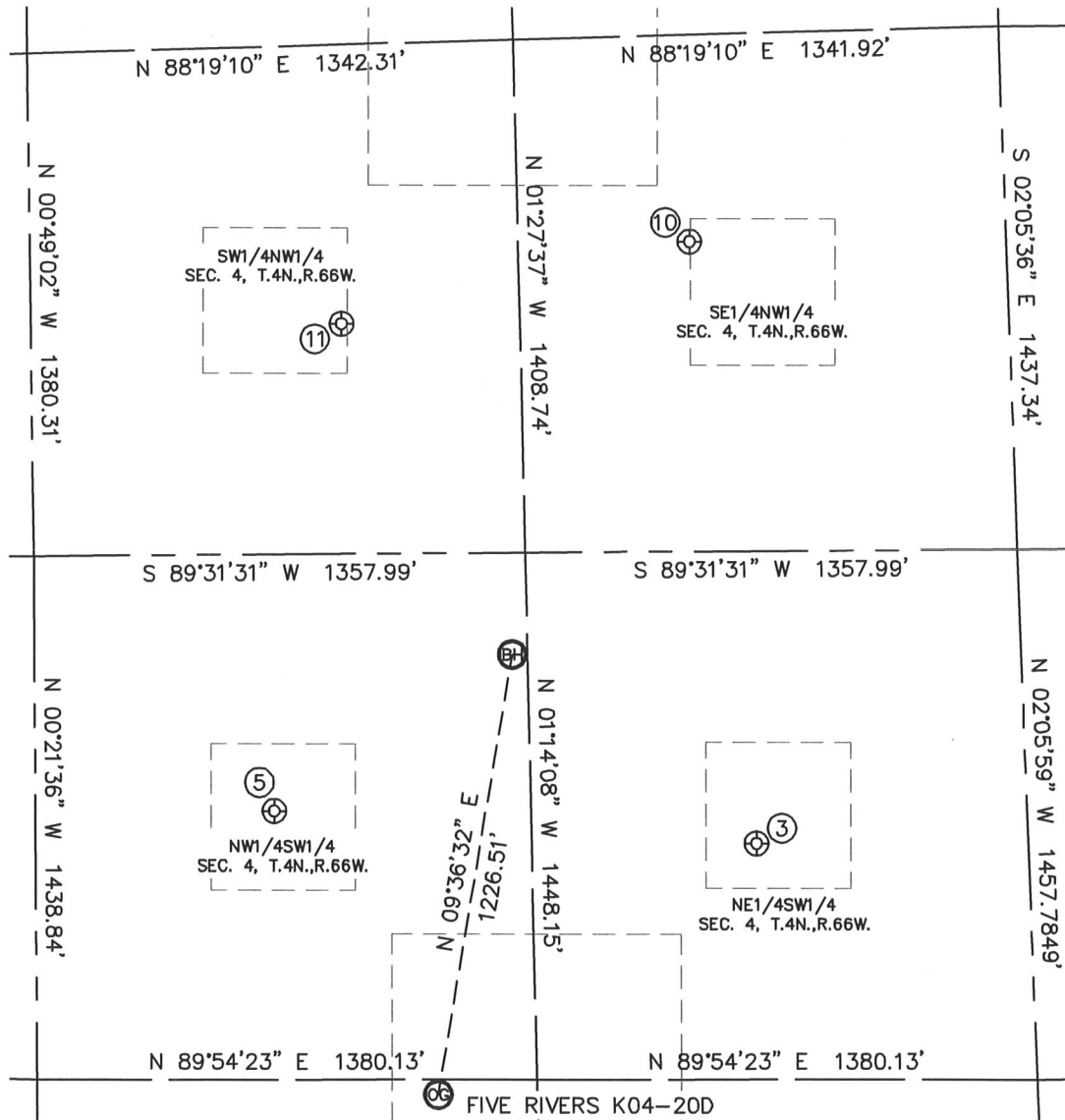
Brian T. Brinkman—On Behalf of Lat40°, LLC
Colorado Licensed Professional Land Surveyor No. 38175



SITE SKETCH

FIVE RIVERS K04-20D

SECTION: 4
TOWNSHIP: 4N
RANGE: 66W



- | | | | |
|---|--|---|--|
| ③
KAMMERZELL #1
NE1/4SW1/4
2100' FSL
1992' FWL
LAT-40.33934°N
LONG-104.78626°W
PDOP: 1.6
ELEV: 4690 | ⑤
KAMMERZELL 4-12
NW1/4SW1/4
2181' FSL
660' FWL
LAT-40.33961°N
LONG-104.79104°W
PDOP: 1.7
ELEV: 4693 | ⑩
ALVA SHABLE 2-4
SE1/4NW1/4
1880' FNL
1824' FWL
LAT-40.34388°N
LONG-104.78688°W
PDOP: 1.5
ELEV: 4690 | ⑪
GUY SHABLE INC. 1-4
SW1/4NW1/4
2084' FNL
859' FWL
LAT-40.34328°N
LONG-104.79034°W
PDOP: 2.6
ELEV: 4692 |
|---|--|---|--|

