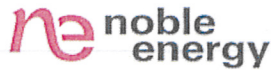


1625 Broadway  
Suite 2000  
Denver, CO 80202  
  
Tel: 303.228.4000  
Fax: 303.228.4280  
www.nobleenergyinc.com



May 31, 2011

Colorado Oil and Gas Conservation Commission  
The Chancery Building  
1120 Lincoln Street, Suite 801  
Denver, CO 80203  
Attn: Mr. David Neslin, Director

RE: HORTON D18-22D  
Codell/Niobrara/J Sand New Drill  
Township 3 North, Range 64 West, 6th P.M.  
Section 18: NW/4SE/4: 1808' FSL & 2047' FEL (Surface Location)  
Section 18: NW/4SE/4: 2500' FSL & 1320' FEL (Bottom Hole Location)  
Weld County, Colorado

Mr. Neslin:

Noble Energy, Inc. ("NEI") is planning to drill the captioned boundary well in accordance with the provisions of COGCC Rule 318A.e.

NEI's proposed wellbore spacing unit consists of the NW/4SE/4 Sec. 18, T3N, R64W, creating a 160-acre wellbore spacing unit. NEI is the only owner within the proposed wellbore spacing unit, therefore NEI hereby attests that no notice letters are required under COGCC Rule 318A.e.(6).

Enclosed are copies of the following documents to assist you in your review and approval of NEI's proposed APD for the captioned well:

- Plat illustrating the proposed wellbore spacing unit and number of Codell/Niobrara/J Sand wells located within the existing 160-acre governmental quarter section(s) (SE/4) to be less than eight (8) in accordance with COGCC Rule 318A.f.
- Plat illustrating proposed wellbore spacing unit on existing location plat.

Thank you for your attention to the enclosed. NEI respectfully requests that the COGCC review the enclosed information and approve the Application for Permit to Drill the captioned well.

Sincerely,

A handwritten signature in blue ink, appearing to read 'Jan Kajiwar'.

Jan Kajiwar  
Regulatory Analyst III  
Noble Energy Inc.

[illegible]

The governmental ¼ Section has less than 8 bottom hole wells producing from the Codell, Niobrara, and J-Sand formations.

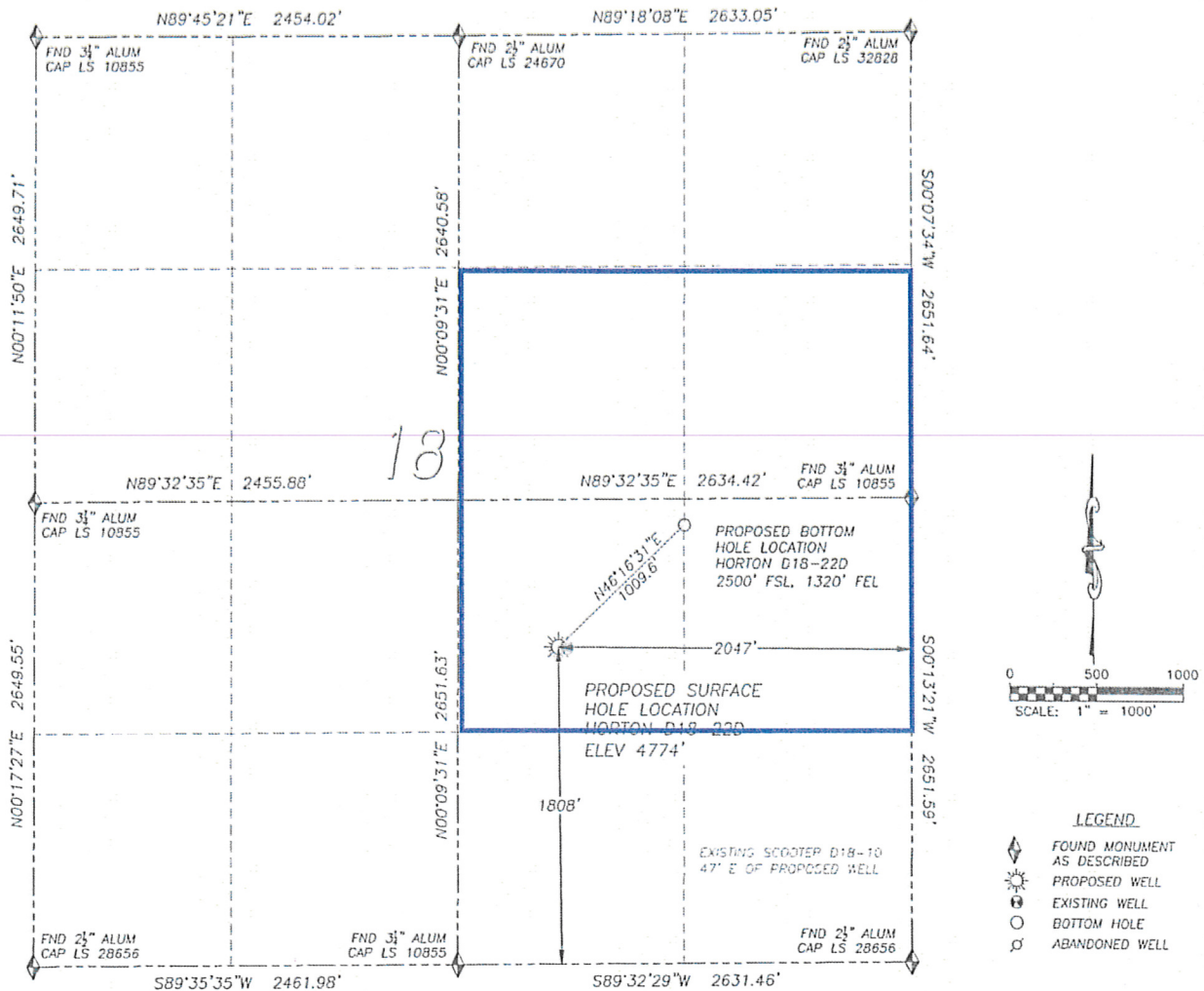
DALEY LAND SURVEYING, INC.

PARKER, CO. 80134

303 953 9841

# WELL LOCATION CERTIFICATE HORTON D18-22D

SECTION 18, TOWNSHIP 3 NORTH, RANGE 64 WEST OF THE 6TH PRINCIPAL MERIDIAN

NAD 83 LATITUDE AND LONGITUDE

HORTON D18-22D SURFACE HOLE:

LATITUDE: N40.22297°

LONGITUDE: W104.59174°

ELEVATION: 4774'

FOOTAGE: 1808' FSL, 2047' FEL

PDOP: 1.5

QTR/QTR: NW4/SE4

PROP LINE: 586'± WEST

BOTTOM HOLE:

LATITUDE: N40.22289°

LONGITUDE: W104.58913°

FOOTAGE: 2500' FSL, 1320' FEL

NEAREST EXISTING WELL:

SCOOTER D18-10 SURFACE HOLE

LATITUDE: N40.22296°

LONGITUDE: W104.59157°

ELEVATION: 4774'

47' EAST

IN ACCORDANCE WITH A REQUEST FROM CJ PIETRI OF NOBLE ENERGY INC., DALEY LAND SURVEYING, INC. HAS DETERMINED THE SURFACE LOCATION OF THE HORTON D18-22D WELL TO BE 1808' FSL, 2047' FEL, AS MEASURED AT NINETY (90) DEGREES FROM THE SECTION LINES OF SECTION 18, TOWNSHIP 3 NORTH, RANGE 64 WEST OF THE 6TH PRINCIPAL MERIDIAN, WELD COUNTY, COLORADO. THE BOTTOM HOLE LOCATION, PROVIDED BY THE CLIENT, IS TO BE 2500' FSL, 1320' FEL.

I HEREBY CERTIFY THAT THIS WELL LOCATION CERTIFICATE WAS PREPARED BY ME OR UNDER MY DIRECT SUPERVISION, THAT THE WORK WAS COMPLETED ON 1/24/2011 FOR AND ON BEHALF OF NOBLE ENERGY, INC., AND THAT THIS MAP DOES NOT REPRESENT A BOUNDARY SURVEY, IT IS NOT A LAND SURVEY PLAT OR AN IMPROVEMENT SURVEY PLAT AND IT IS NOT TO BE RELIED UPON FOR THE ESTABLISHMENT OF FENCE, BUILDING OR OTHER FUTURE IMPROVEMENT LINES.

NOTES:

- 1) BEARINGS FOR THIS MAP ARE ASSUMED AND BASED UPON GPS OBSERVATIONS MADE BETWEEN MONUMENTS LOCATED AT THE SOUTHEAST CORNER AND EAST QUARTER CORNER OF SECTION 18, T.3N., R.64W.
- 2) HORIZONTAL DATUM IS NAD83.
- 3) VERTICAL DATUM IS NAVD83. ELEVATIONS ARE DERIVED FROM GPS OBSERVATIONS PROCESSED THROUGH OPUS, UTILIZING THE GEOID03 MODEL.
- 4) SEE LOCATION DRAWING FOR VISIBLE IMPROVEMENTS WITHIN 600' OF PROPOSED SURFACE HOLE LOCATION.
- 5) SURFACE USE: PASTURE.

NOTICE: According to Colorado law you MUST commence any legal action based upon any defect in this W.L.C. within three years after you first discover such defect. In no event may any action based upon any such defect in this W.L.C. be commenced more than ten years from the date of the certification shown herein.

FOR AND ON BEHALF OF  
DALEY LAND SURVEYING INC.,  
Robert Daley, PLS 35597

