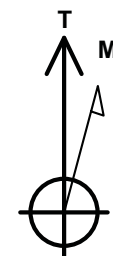
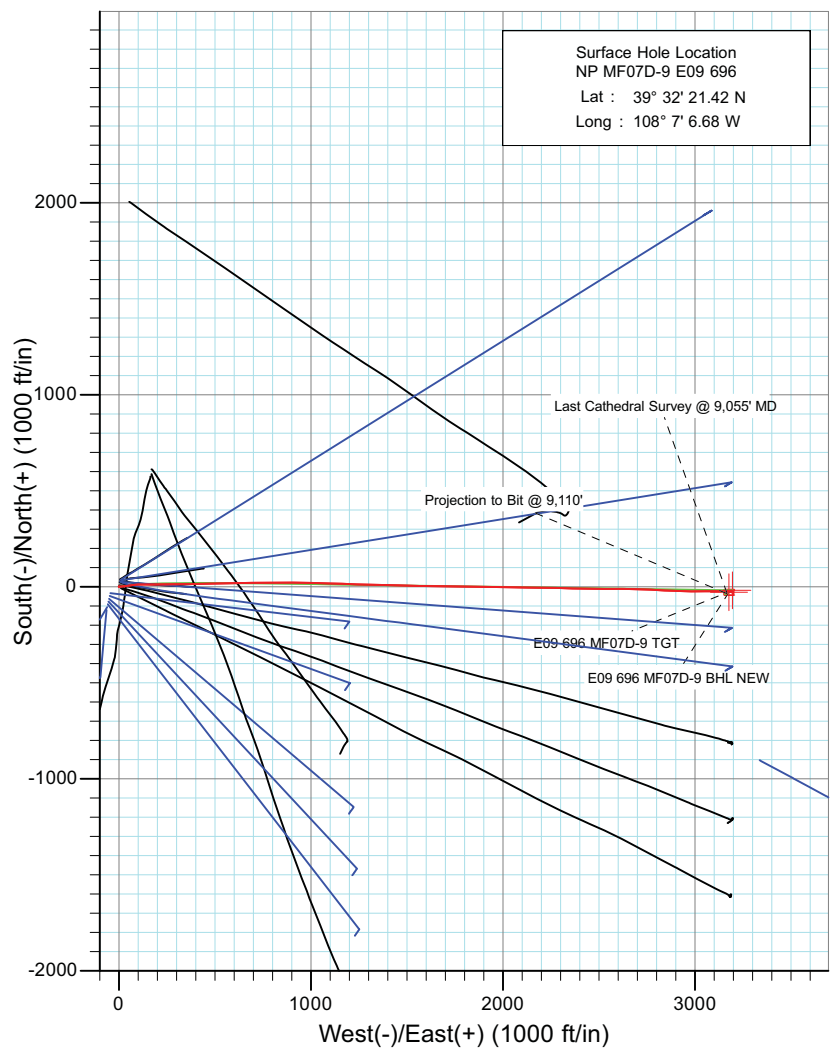
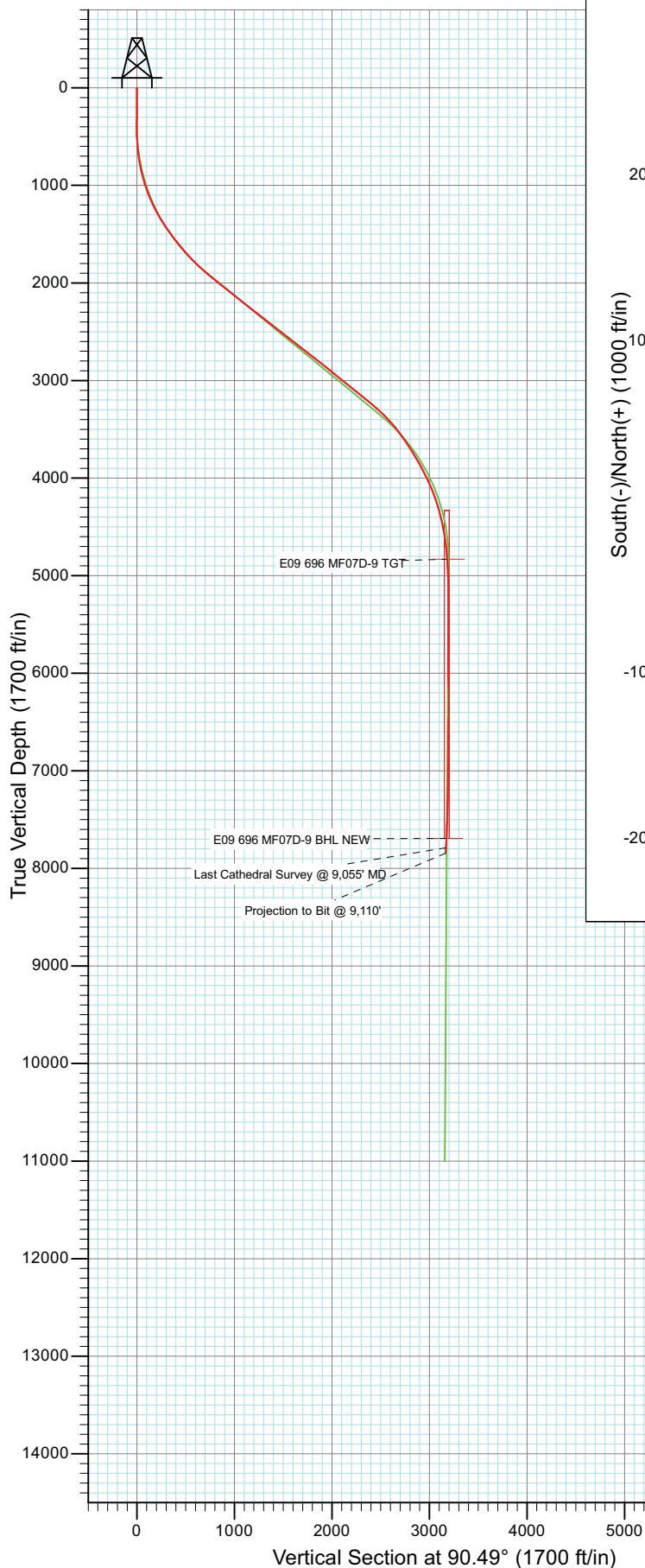




Project: North Piceance  
 Site: E09 696 (SWNW S9-T6S-R96W)  
 Well: NP MF07D-9 E09 696  
 Wellbore: DD  
 Design: Final



Azimuths to True North  
 Magnetic North: 10.48°

Magnetic Field  
 Strength: 52314.0snT  
 Dip Angle: 65.77°  
 Date: 11/29/2010  
 Model: IGRF2010

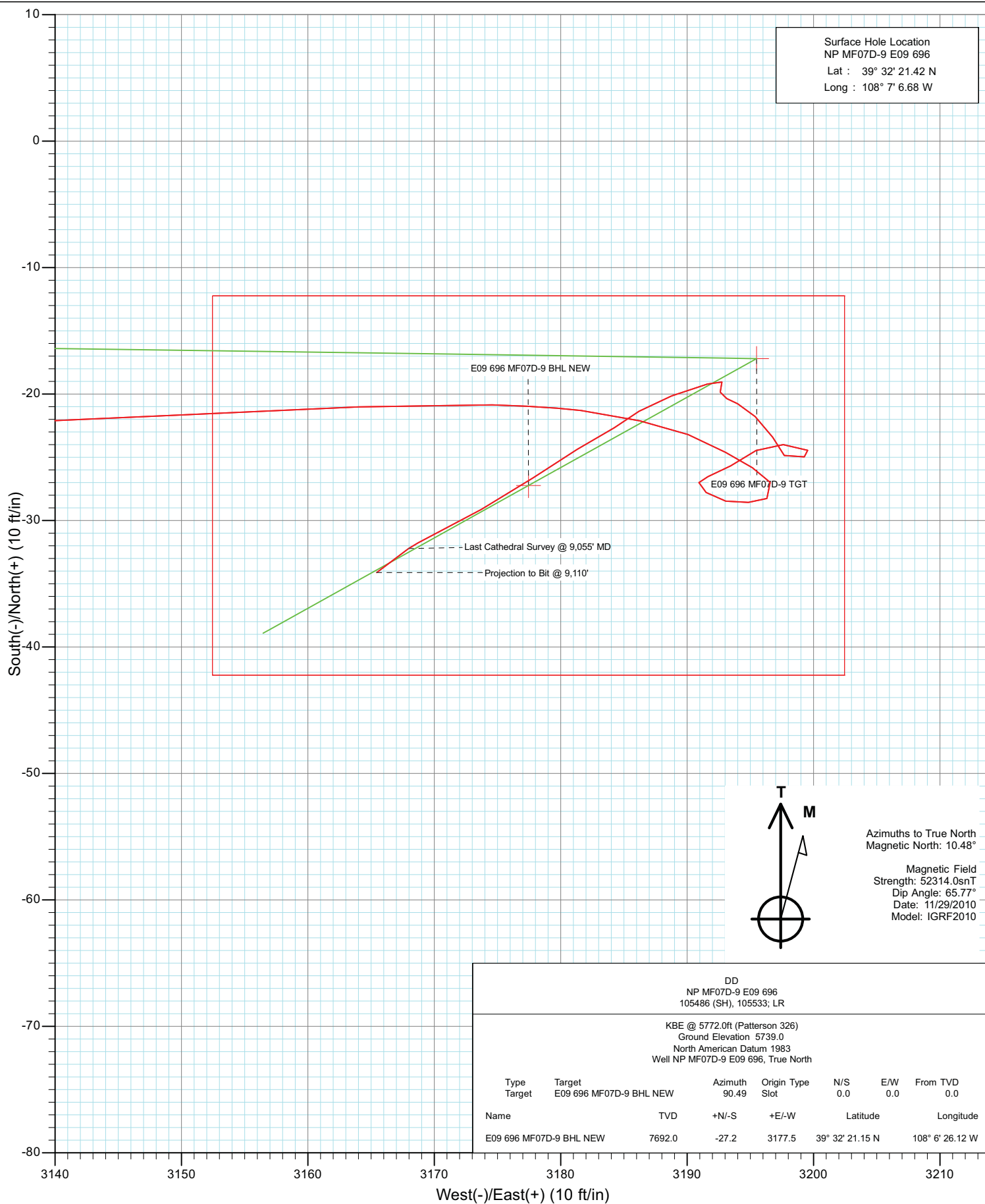
DD  
 NP MF07D-9 E09 696  
 105486 (SH), 105533; LR

KBE @ 5772.0ft (Patterson 326)  
 Ground Elevation 5739.0  
 North American Datum 1983  
 Well NP MF07D-9 E09 696, True North

Type	Target	Azimuth	Origin	Type	N/S	E/W	From TVD
Target	E09 696 MF07D-9 BHL NEW	90.49	Slot		0.0	0.0	0.0
Name	TV	+N/-S	+E/-W	Latitude	Longitude		
E09 696 MF07D-9 BHL NEW	7692.0	-27.2	3177.5	39° 32' 21.15 N	108° 6' 26.12 W		



Project: North Piceance  
 Site: E09 696 (SWNW S9-T6S-R96W)  
 Well: NP MF07D-9 E09 696  
 Wellbore: DD  
 Design: DD



# Cathedral Energy

## Survey Report

<b>Company:</b>	EnCana Oil & Gas (USA) Inc	<b>Local Co-ordinate Reference:</b>	Well NP MF07D-9 E09 696
<b>Project:</b>	North Piceance	<b>TVD Reference:</b>	KBE @ 5772.0ft (Patterson 326)
<b>Site:</b>	E09 696 (SWNW S9-T6S-R96W)	<b>MD Reference:</b>	KBE @ 5772.0ft (Patterson 326)
<b>Well:</b>	NP MF07D-9 E09 696	<b>North Reference:</b>	True
<b>Wellbore:</b>	DD	<b>Survey Calculation Method:</b>	Minimum Curvature
<b>Design:</b>	DD	<b>Database:</b>	EDM 5000.1 US Multi Users DB

<b>Project</b>	North Piceance		
<b>Map System:</b>	US State Plane 1983	<b>System Datum:</b>	Mean Sea Level
<b>Geo Datum:</b>	North American Datum 1983		
<b>Map Zone:</b>	Colorado Central Zone		

<b>Site</b>	E09 696 (SWNW S9-T6S-R96W)			
<b>Site Position:</b>		<b>Northing:</b>	1,632,140.57 ft	<b>Latitude:</b> 39° 32' 23.23 N
<b>From:</b>	Lat/Long	<b>Easting:</b>	2,261,634.68 ft	<b>Longitude:</b> 108° 7' 6.47 W
<b>Position Uncertainty:</b>	0.0 ft	<b>Slot Radius:</b>	0.000 in	<b>Grid Convergence:</b> -1.65 °

<b>Well</b>	NP MF07D-9 E09 696			
<b>Well Position</b>	<b>+N/-S</b>	0.0 ft	<b>Northing:</b>	1,631,958.01 ft
	<b>+E/-W</b>	0.0 ft	<b>Easting:</b>	2,261,612.99 ft
<b>Position Uncertainty</b>	0.0 ft	<b>Wellhead Elevation:</b>	ft	<b>Ground Level:</b> 5,739.0 ft

<b>Wellbore</b>	DD				
<b>Magnetics</b>	<b>Model Name</b>	<b>Sample Date</b>	<b>Declination (°)</b>	<b>Dip Angle (°)</b>	<b>Field Strength (nT)</b>
	IGRF2010	11/29/2010	10.48	65.77	52,314

<b>Design</b>	DD			
<b>Audit Notes:</b>				
<b>Version:</b>	1.0	<b>Phase:</b>	ACTUAL	<b>Tie On Depth:</b> 0.0
<b>Vertical Section:</b>	<b>Depth From (TVD) (ft)</b>	<b>+N/-S (ft)</b>	<b>+E/-W (ft)</b>	<b>Direction (°)</b>
	0.0	0.0	0.0	90.49

<b>Survey Program</b>	<b>Date</b>	12/6/2010		
<b>From (ft)</b>	<b>To (ft)</b>	<b>Survey (Wellbore)</b>	<b>Tool Name</b>	<b>Description</b>
234.0	9,110.0	Survey #1 (DD)	MWD	Geolink MWD

<b>Survey</b>									
<b>Measured Depth (ft)</b>	<b>Inclination (°)</b>	<b>Azimuth (°)</b>	<b>Vertical Depth (ft)</b>	<b>+N/-S (ft)</b>	<b>+E/-W (ft)</b>	<b>Vertical Section (ft)</b>	<b>Dogleg Rate (°/100ft)</b>	<b>Build Rate (°/100ft)</b>	<b>Formations / Comments</b>
0.0	0.00	0.00	0.0	0.0	0.0	0.0	0.00	0.00	
234.0	0.30	2.80	234.0	0.6	0.0	0.0	0.13	0.13	
264.0	0.00	81.80	264.0	0.7	0.0	0.0	1.00	-1.00	
295.0	0.20	238.40	295.0	0.7	0.0	0.0	0.65	0.65	
326.0	0.40	345.90	326.0	0.7	-0.1	-0.1	1.61	0.65	
357.0	0.40	332.20	357.0	0.9	-0.2	-0.2	0.31	0.00	
387.0	0.20	245.80	387.0	1.0	-0.3	-0.3	1.45	-0.67	
418.0	0.20	250.10	418.0	1.0	-0.4	-0.4	0.05	0.00	
449.0	0.70	54.20	449.0	1.1	-0.3	-0.3	2.88	1.61	
480.0	1.10	68.30	480.0	1.3	0.2	0.2	1.47	1.29	
510.0	1.90	81.60	510.0	1.5	0.9	0.9	2.89	2.67	
542.0	2.70	92.60	542.0	1.5	2.2	2.2	2.84	2.50	
574.0	3.60	85.80	573.9	1.5	4.0	4.0	3.04	2.81	

# Cathedral Energy

## Survey Report

<b>Company:</b>	EnCana Oil & Gas (USA) Inc	<b>Local Co-ordinate Reference:</b>	Well NP MF07D-9 E09 696
<b>Project:</b>	North Piceance	<b>TVD Reference:</b>	KBE @ 5772.0ft (Patterson 326)
<b>Site:</b>	E09 696 (SWNW S9-T6S-R96W)	<b>MD Reference:</b>	KBE @ 5772.0ft (Patterson 326)
<b>Well:</b>	NP MF07D-9 E09 696	<b>North Reference:</b>	True
<b>Wellbore:</b>	DD	<b>Survey Calculation Method:</b>	Minimum Curvature
<b>Design:</b>	DD	<b>Database:</b>	EDM 5000.1 US Multi Users DB

Survey									
Measured Depth (ft)	Inclination (°)	Azimuth (°)	Vertical Depth (ft)	+N/-S (ft)	+E/-W (ft)	Vertical Section (ft)	Dogleg Rate (°/100ft)	Build Rate (°/100ft)	Formations / Comments
605.0	4.50	89.00	604.8	1.6	6.2	6.1	2.99	2.90	
637.0	5.90	86.30	636.7	1.8	9.0	9.0	4.44	4.37	
668.0	7.40	87.30	667.5	2.0	12.6	12.6	4.85	4.84	
700.0	8.40	83.50	699.2	2.3	17.0	17.0	3.52	3.12	
732.0	9.30	84.90	730.8	2.8	21.9	21.9	2.89	2.81	
763.0	9.90	84.30	761.4	3.3	27.1	27.0	1.96	1.94	
795.0	10.50	82.60	792.9	4.0	32.7	32.7	2.10	1.87	
827.0	11.70	83.10	824.3	4.7	38.8	38.8	3.76	3.75	
858.0	13.10	80.10	854.5	5.7	45.4	45.3	4.97	4.52	
890.0	14.10	79.30	885.6	7.0	52.8	52.7	3.18	3.12	
953.0	16.20	82.60	946.5	9.6	69.0	69.0	3.60	3.33	
1,016.0	18.10	85.50	1,006.6	11.5	87.5	87.4	3.31	3.02	
1,079.0	20.60	88.60	1,066.1	12.5	108.4	108.2	4.29	3.97	
1,143.0	22.70	90.60	1,125.6	12.7	132.0	131.8	3.48	3.28	
1,206.0	25.00	89.90	1,183.2	12.6	157.4	157.3	3.68	3.65	
1,269.0	27.40	90.00	1,239.7	12.6	185.2	185.1	3.81	3.81	
1,332.0	29.40	89.30	1,295.1	12.8	215.2	215.1	3.22	3.17	
1,395.0	31.10	90.10	1,349.5	13.0	246.9	246.8	2.77	2.70	
1,490.0	34.60	89.00	1,429.3	13.4	298.5	298.3	3.74	3.68	
1,558.0	35.60	89.10	1,485.0	14.0	337.6	337.4	1.47	1.47	
1,653.0	38.10	87.80	1,561.0	15.6	394.5	394.4	2.76	2.63	
1,748.0	39.70	89.30	1,634.9	17.1	454.1	454.0	1.95	1.68	
1,843.0	41.80	89.00	1,706.9	18.0	516.1	516.0	2.22	2.21	
1,938.0	44.40	88.10	1,776.2	19.7	581.0	580.8	2.81	2.74	
2,033.0	47.20	90.10	1,842.5	20.7	649.1	648.9	3.31	2.95	
2,127.0	50.80	89.60	1,904.1	20.9	720.0	719.8	3.85	3.83	
2,222.0	52.00	90.20	1,963.4	21.0	794.3	794.1	1.36	1.26	
2,317.0	50.80	89.70	2,022.7	21.1	868.5	868.3	1.33	-1.26	
2,411.0	50.80	90.20	2,082.1	21.2	941.4	941.1	0.41	0.00	
2,506.0	51.20	90.60	2,141.9	20.6	1,015.2	1,015.0	0.53	0.42	
2,601.0	52.40	92.30	2,200.6	18.7	1,089.8	1,089.6	1.89	1.26	
2,695.0	51.30	91.50	2,258.7	16.3	1,163.7	1,163.5	1.35	-1.17	
2,790.0	52.40	92.50	2,317.4	13.7	1,238.4	1,238.2	1.42	1.16	
2,884.0	52.00	91.40	2,375.0	11.1	1,312.6	1,312.4	1.02	-0.43	
2,979.0	52.20	91.60	2,433.3	9.2	1,387.5	1,387.4	0.27	0.21	
3,074.0	52.40	92.00	2,491.4	6.8	1,462.7	1,462.5	0.39	0.21	
3,169.0	51.50	90.70	2,550.0	5.1	1,537.4	1,537.3	1.43	-0.95	
3,263.0	52.30	90.40	2,608.0	4.3	1,611.4	1,611.3	0.89	0.85	
3,358.0	52.10	90.20	2,666.2	4.0	1,686.5	1,686.4	0.27	-0.21	
3,453.0	52.00	91.40	2,724.6	2.9	1,761.4	1,761.3	1.00	-0.11	
3,548.0	52.30	90.50	2,782.9	1.7	1,836.4	1,836.3	0.81	0.32	
3,643.0	52.00	91.60	2,841.2	0.3	1,911.4	1,911.3	0.97	-0.32	
3,737.0	50.70	91.00	2,899.9	-1.4	1,984.8	1,984.7	1.47	-1.38	
3,832.0	50.80	91.00	2,960.0	-2.7	2,058.3	2,058.3	0.11	0.11	
3,927.0	51.50	90.90	3,019.6	-3.9	2,132.3	2,132.2	0.74	0.74	
4,022.0	50.80	90.50	3,079.2	-4.8	2,206.3	2,206.2	0.81	-0.74	
4,116.0	51.50	90.80	3,138.2	-5.6	2,279.5	2,279.4	0.79	0.74	
4,211.0	51.10	91.80	3,197.6	-7.3	2,353.6	2,353.6	0.92	-0.42	
4,306.0	50.10	91.50	3,257.9	-9.4	2,427.0	2,427.0	1.08	-1.05	
4,401.0	47.00	89.80	3,320.8	-10.3	2,498.2	2,498.2	3.53	-3.26	
4,496.0	43.80	89.80	3,387.5	-10.0	2,565.8	2,565.8	3.37	-3.37	
4,590.0	39.90	91.10	3,457.5	-10.5	2,628.5	2,628.5	4.25	-4.15	
4,685.0	36.80	91.30	3,532.0	-11.7	2,687.4	2,687.4	3.27	-3.26	

# Cathedral Energy

## Survey Report

<b>Company:</b>	EnCana Oil & Gas (USA) Inc	<b>Local Co-ordinate Reference:</b>	Well NP MF07D-9 E09 696
<b>Project:</b>	North Piceance	<b>TVD Reference:</b>	KBE @ 5772.0ft (Patterson 326)
<b>Site:</b>	E09 696 (SWNW S9-T6S-R96W)	<b>MD Reference:</b>	KBE @ 5772.0ft (Patterson 326)
<b>Well:</b>	NP MF07D-9 E09 696	<b>North Reference:</b>	True
<b>Wellbore:</b>	DD	<b>Survey Calculation Method:</b>	Minimum Curvature
<b>Design:</b>	DD	<b>Database:</b>	EDM 5000.1 US Multi Users DB

Survey									
Measured Depth (ft)	Inclination (°)	Azimuth (°)	Vertical Depth (ft)	+N/-S (ft)	+E/-W (ft)	Vertical Section (ft)	Dogleg Rate (°/100ft)	Build Rate (°/100ft)	Formations / Comments
4,780.0	35.10	91.50	3,608.9	-13.1	2,743.2	2,743.2	1.79	-1.79	
4,875.0	33.60	93.60	3,687.3	-15.4	2,796.7	2,796.7	2.01	-1.58	
4,969.0	31.10	93.70	3,766.7	-18.6	2,846.9	2,847.0	2.66	-2.66	
5,064.0	29.00	92.10	3,848.9	-21.1	2,894.4	2,894.5	2.37	-2.21	
5,159.0	26.90	91.30	3,932.8	-22.4	2,938.9	2,939.0	2.25	-2.21	
5,254.0	25.30	90.30	4,018.2	-23.0	2,980.7	2,980.8	1.75	-1.68	
5,348.0	22.90	88.90	4,104.0	-22.7	3,019.1	3,019.2	2.62	-2.55	
5,443.0	19.40	90.10	4,192.5	-22.4	3,053.3	3,053.4	3.71	-3.68	
5,538.0	17.00	89.80	4,282.8	-22.4	3,083.0	3,083.1	2.53	-2.53	
5,633.0	14.40	91.50	4,374.2	-22.7	3,108.7	3,108.8	2.78	-2.74	
5,727.0	12.40	87.40	4,465.7	-22.5	3,130.5	3,130.6	2.35	-2.13	
5,822.0	10.50	87.60	4,558.8	-21.7	3,149.3	3,149.4	2.00	-2.00	
5,917.0	7.30	87.10	4,652.6	-21.0	3,164.0	3,164.1	3.37	-3.37	
6,012.0	5.50	91.80	4,747.0	-20.9	3,174.6	3,174.6	1.97	-1.89	
6,106.0	3.10	96.90	4,840.8	-21.3	3,181.6	3,181.7	2.58	-2.55	
6,201.0	2.60	103.70	4,935.6	-22.1	3,186.3	3,186.3	0.63	-0.53	
6,296.0	2.20	108.20	5,030.6	-23.2	3,190.1	3,190.2	0.47	-0.42	
6,391.0	1.80	124.40	5,125.5	-24.6	3,193.0	3,193.1	0.72	-0.42	
6,485.0	1.20	112.90	5,219.5	-25.8	3,195.2	3,195.3	0.71	-0.64	
6,580.0	1.10	147.20	5,314.4	-27.0	3,196.6	3,196.7	0.72	-0.11	
6,675.0	1.10	236.10	5,409.4	-28.3	3,196.3	3,196.4	1.62	0.00	
6,769.0	0.90	285.00	5,503.4	-28.6	3,194.8	3,195.0	0.90	-0.21	
6,864.0	1.30	265.00	5,598.4	-28.5	3,193.1	3,193.2	0.58	0.42	
6,959.0	1.10	328.10	5,693.4	-27.8	3,191.5	3,191.6	1.33	-0.21	
7,054.0	0.10	280.50	5,788.4	-27.0	3,190.9	3,191.1	1.09	-1.05	
7,148.0	1.10	60.50	5,882.4	-26.5	3,191.6	3,191.8	1.25	1.06	
7,243.0	1.30	67.60	5,977.4	-25.7	3,193.4	3,193.5	0.26	0.21	
7,337.0	1.60	52.10	6,071.3	-24.5	3,195.5	3,195.5	0.52	0.32	
7,432.0	1.40	107.30	6,166.3	-24.0	3,197.6	3,197.7	1.47	-0.21	
7,527.0	1.00	96.90	6,261.3	-24.4	3,199.5	3,199.6	0.48	-0.42	
7,622.0	1.40	248.80	6,356.3	-25.0	3,199.3	3,199.4	2.45	0.42	
7,716.0	0.90	314.50	6,450.2	-24.9	3,197.7	3,197.8	1.40	-0.53	
7,811.0	1.20	338.10	6,545.2	-23.4	3,196.8	3,196.9	0.55	0.32	
7,906.0	1.50	304.60	6,640.2	-21.8	3,195.4	3,195.5	0.87	0.32	
8,000.0	0.60	310.70	6,734.2	-20.8	3,194.0	3,194.1	0.96	-0.96	
8,095.0	0.60	280.50	6,829.2	-20.4	3,193.1	3,193.2	0.33	0.00	
8,190.0	0.50	356.90	6,924.2	-19.8	3,192.6	3,192.7	0.72	-0.11	
8,285.0	0.50	21.80	7,019.2	-19.0	3,192.8	3,192.8	0.23	0.00	
8,379.0	1.70	247.40	7,113.2	-19.2	3,191.6	3,191.7	2.21	1.28	
8,472.0	2.00	255.20	7,206.1	-20.1	3,188.8	3,188.8	0.42	0.32	
8,567.0	1.50	230.90	7,301.1	-21.4	3,186.2	3,186.3	0.93	-0.53	
8,661.0	1.40	242.30	7,395.0	-22.7	3,184.2	3,184.3	0.32	-0.11	
8,756.0	2.70	238.50	7,490.0	-24.4	3,181.3	3,181.4	1.38	1.37	
8,851.0	2.30	235.40	7,584.9	-26.6	3,177.8	3,177.9	0.44	-0.42	
8,946.0	3.50	240.70	7,679.8	-29.1	3,173.7	3,173.9	1.29	1.26	
9,040.0	3.40	243.80	7,773.6	-31.8	3,168.7	3,168.9	0.23	-0.11	
9,055.0	3.30	233.10	7,788.6	-32.2	3,168.0	3,168.1	4.21	-0.67	Last Cathedral Survey @ 9,055' MD Projection to Bit @ 9,110'
9,110.0	3.30	233.10	7,843.5	-34.1	3,165.4	3,165.6	0.00	0.00	

# Cathedral Energy

## Survey Report

<b>Company:</b>	EnCana Oil & Gas (USA) Inc	<b>Local Co-ordinate Reference:</b>	Well NP MF07D-9 E09 696
<b>Project:</b>	North Piceance	<b>TVD Reference:</b>	KBE @ 5772.0ft (Patterson 326)
<b>Site:</b>	E09 696 (SWNW S9-T6S-R96W)	<b>MD Reference:</b>	KBE @ 5772.0ft (Patterson 326)
<b>Well:</b>	NP MF07D-9 E09 696	<b>North Reference:</b>	True
<b>Wellbore:</b>	DD	<b>Survey Calculation Method:</b>	Minimum Curvature
<b>Design:</b>	DD	<b>Database:</b>	EDM 5000.1 US Multi Users DB

Targets									
Target Name	Dip Angle	Dip Dir.	TVD	+N/-S	+E/-W	Northing	Easting	Latitude	Longitude
- hit/miss target	(°)	(°)	(ft)	(ft)	(ft)	(ft)	(ft)		
- Shape									
E09 696 MF07D-9 BHL	0.00	0.00	7,692.0	-27.2	3,177.5	1,631,839.21	2,264,788.34	39° 32' 21.15 N	108° 6' 26.12 W
- survey misses target center by 4.9ft at 8958.0ft MD (7691.7 TVD, -29.5 N, 3173.1 E)									
- Rectangle (sides W30.0 H50.0 D0.0)									
E09 696 MF07D-9 TGT	0.00	0.00	4,832.0	-17.2	3,195.5	1,631,848.73	2,264,806.67	39° 32' 21.25 N	108° 6' 25.89 W
- survey misses target center by 14.9ft at 6098.3ft MD (4833.1 TVD, -21.2 N, 3181.2 E)									
- Point									

Survey Annotations				
Measured Depth	Vertical Depth	Local Coordinates		Comment
(ft)	(ft)	+N/-S (ft)	+E/-W (ft)	
9,055.0	7,788.6	-32.2	3,168.0	Last Cathedral Survey @ 9,055' MD
9,110.0	7,843.5	-34.1	3,165.4	Projection to Bit @ 9,110'

Checked By: _____	Approved By: _____	Date: _____
-------------------	--------------------	-------------