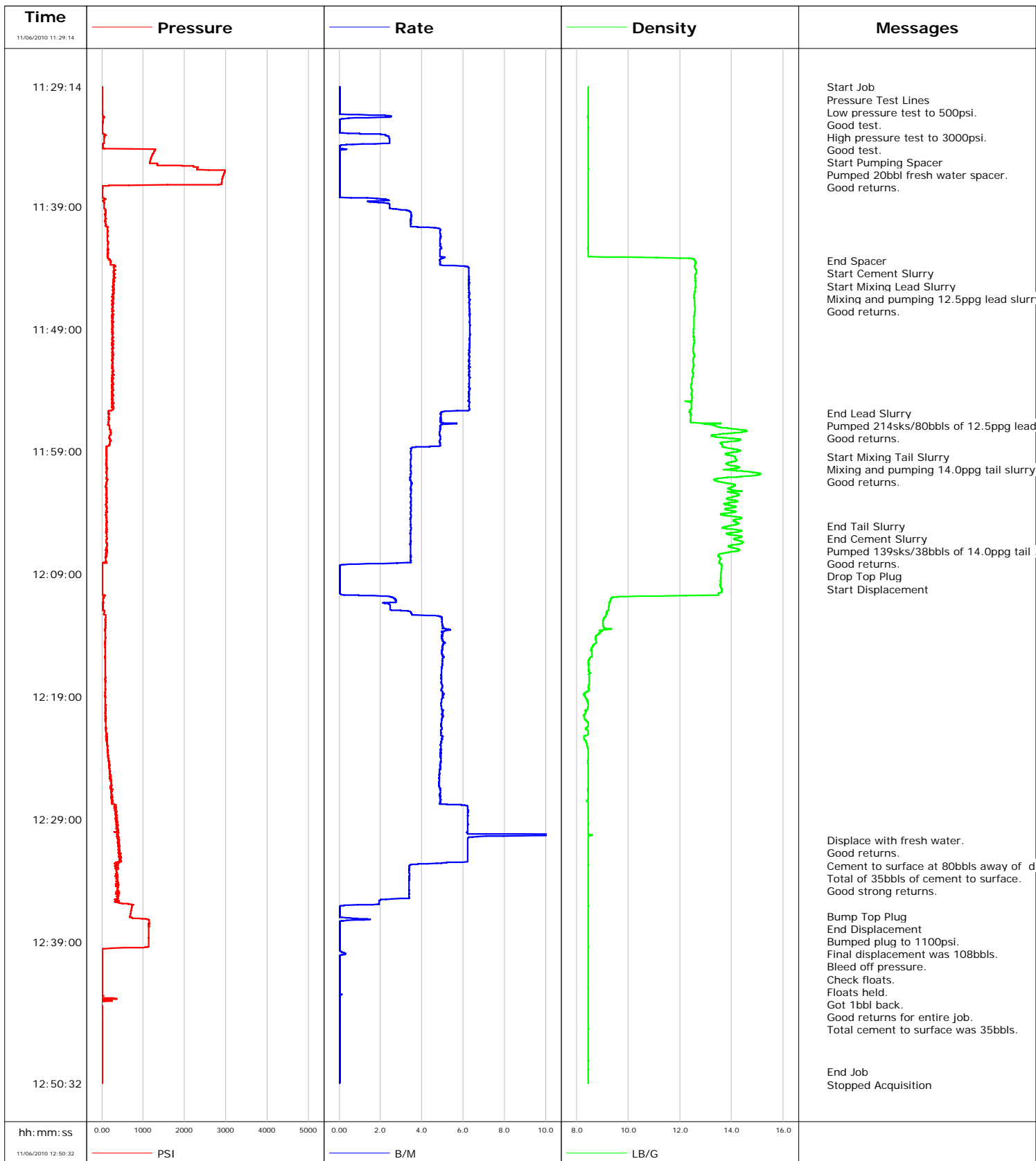


Well	MF10D E09 696	Client	ENCANA
Field	NORTH PARACHUTE	SIR No.	B708-00189
Engineer	JEFF PATTERSON	Job Type	9 5/8" SURFACE
Country	United States	Job Date	11-06-2010



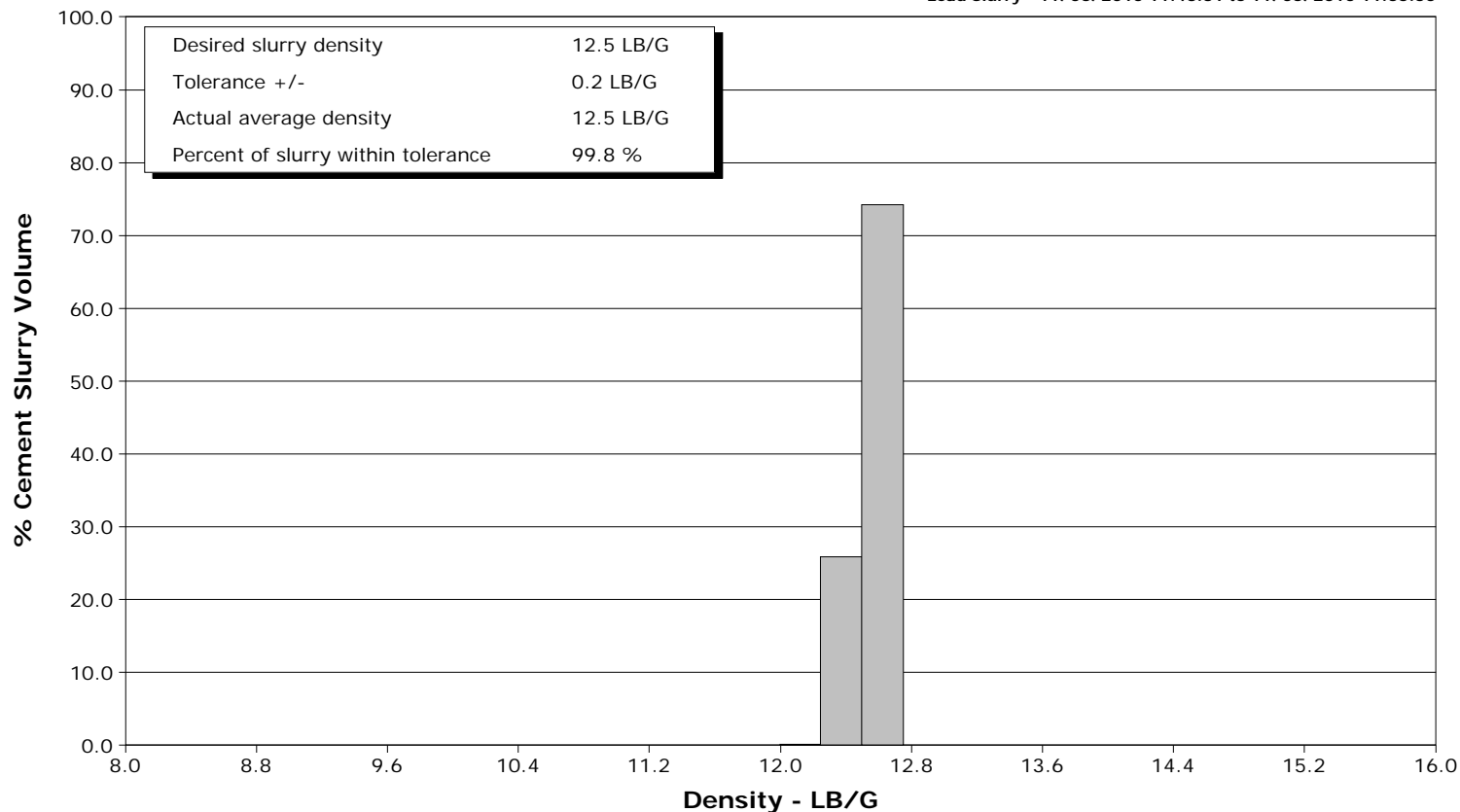
Schlumberger

Cementing Qa/Qc Density Report

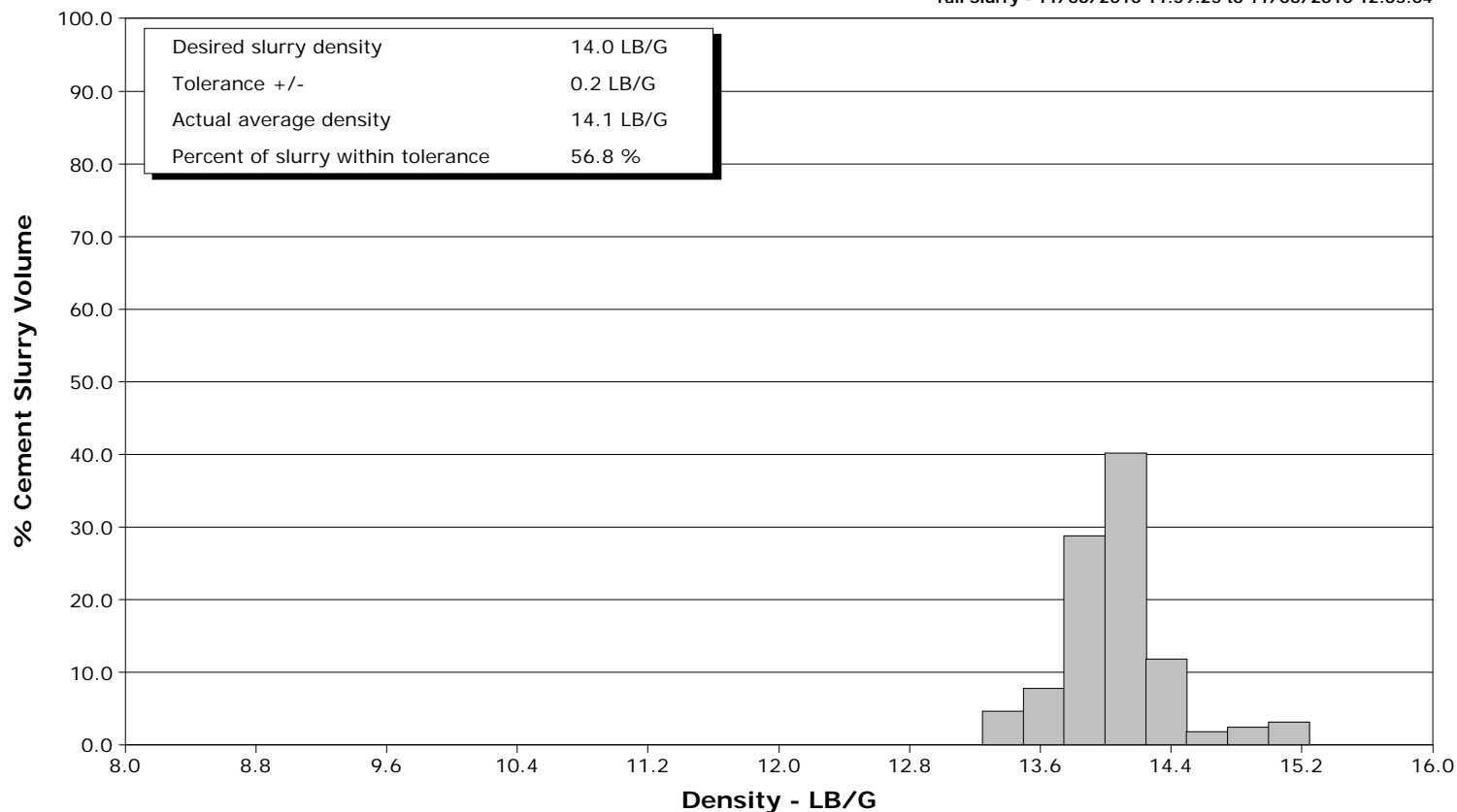
Well MF10D E09 696
Field NORTH PARACHUTE
Engineer JEFF PATTERSON
Country United States

Client ENCANA
SIR No. B708-00189
Job Type 9 5/8" SURFACE
Job Date 11-06-2010

Lead Slurry - 11/06/2010 11:43:31 to 11/06/2010 11:55:50



Tail Slurry - 11/06/2010 11:59:25 to 11/06/2010 12:05:04





Cementing Service Report

				Customer ENCANA			Job Number B708-00189								
Well MF10D E09 696 MF10D E09 696			Location (legal) E09			Schlumberger Location GRAND JUNCTION,COLORADO		Job Start Nov/06/2010							
Field NORTH PARACHUTE		Formation Name/Type SHALE		Deviation 0 deg		Bit Size 12.3 in		Well MD		Well TVD					
County GARFIELD		State/Province Colorado		BHP		BHST 97 degF		BHCT 87 degF		Pore Press. Gradient					
Well Master 0631224148		API/UWI													
Rig Name PATTERSON 326		Drilled For Gas		Service Via Land		Casing/Liner									
						Depth, ft		Size, in		Weight, lb/ft		Grade		Thread	
Offshore Zone		Well Class New		Well Type Development		1500.0		9.630		36.0		J55		8RD	
						0.0		0.000		0.0					
Drilling Fluid Type		Max. Density		Plastic Viscosity		Tubing/Drill Pipe									
						Depth,		Size,		Weight,		Grade		Thread	
Service Line Cementing		Job Type 9 5/8" SURFACE													
Max. Allowed Tub. Press 3000 psi		Max. Allowed Ann. Press		WH Connection 9 5/8" CEMENT HEAD		Perforations/Open Hole									
						Top,		Bottom,				No. of Shots		Total Interval	
Service Instructions Provide Equipment and Services to Cement 9 5/8" Surface Casing														Diameter	
Treat Down Casing				Displacement 115.0 bbl		Packer Type				Packer Depth					
Tubing Vol.				Casing Vol. 118.5 bbl		Annular Vol. 115.0 bbl		Openhole Vol. 230.0 bbl							
Casing/Tubing Secured <input checked="" type="checkbox"/>		1 Hole Vol. Circulated prior to Cement <input checked="" type="checkbox"/>		Casing Tools				Squeeze Job							
Lift Pressure 758 psi		Shoe Type Guide		Squeeze Type											
Pipe Rotated <input type="checkbox"/>		Pipe Reciprocated <input type="checkbox"/>		Shoe Depth 1532.0 ft		Tool Type									
No. Centralizers		Top Plugs 1		Bottom Plugs		Stage Tool Type		Tool Depth							
Cement Head Type Single		Stage Tool Depth		Tail Pipe Size											
Job Scheduled For Nov/06/2010		Arrived on Location Nov/06/2010		Leave Location Nov/06/2010		Collar Type Float		Tail Pipe Depth							
						Collar Depth 1488.0 ft		Sqz. Total Vol.							
Date	Time 24-hr clock	Treating Pressure PSI	Flow Rate B/M	Density LB/G	Volume BBL	Message									
11/06/2010	10:23:31					Started Acquisition									
11/06/2010	11:29:14	-3	0.0	8.46	0.0										
11/06/2010	11:29:15					Start Job									
11/06/2010	11:29:15	-3	0.0	8.46	0.0										
11/06/2010	11:29:17					Pressure Test Lines									
11/06/2010	11:29:17	-3	0.0	8.46	0.0										
11/06/2010	11:29:19					Low pressure test to 500psi.									
11/06/2010	11:29:19					Good test.									
11/06/2010	11:29:19					High pressure test to 3000psi.									
11/06/2010	11:29:19					Good test.									
11/06/2010	11:29:19	-3	0.0	8.46	0.0										
11/06/2010	11:29:21					Start Pumping Spacer									
11/06/2010	11:29:21	-2	0.0	8.46	0.0										
11/06/2010	11:29:23					Pumped 20bbl fresh water spacer.									
11/06/2010	11:29:23					Good returns.									
11/06/2010	11:29:23	-3	0.0	8.46	0.0										
11/06/2010	11:29:31	-3	0.0	8.46	0.0										
11/06/2010	11:30:01	-3	0.0	8.46	0.0										
11/06/2010	11:30:31	-3	0.0	8.46	0.0										
11/06/2010	11:31:01	-3	0.0	8.46	0.0										
11/06/2010	11:31:31	2	0.9	8.46	0.0										

Well MF10D E09 696 MF10D E09 696			Field NORTH PARACHUTE		Job Start Nov/06/2010	Customer ENCANA	Job Number B708-00189
Date	Time 24-hr clock	Treating Pressure PSI	Flow Rate B/M	Density LB/G	Volume BBL	Message	
11/06/2010	11:32:31	2	0.0	8.46	0.6		
11/06/2010	11:33:01	7	0.2	8.46	0.6		
11/06/2010	11:33:31	62	2.4	8.46	1.6		
11/06/2010	11:34:01	17	0.1	8.46	2.6		
11/06/2010	11:34:31	1266	0.0	8.46	2.7		
11/06/2010	11:35:01	1195	0.0	8.46	2.7		
11/06/2010	11:35:31	1348	0.0	8.46	2.7		
11/06/2010	11:36:01	2302	0.0	8.46	2.7		
11/06/2010	11:36:31	2934	0.0	8.46	2.7		
11/06/2010	11:37:01	2900	0.0	8.46	2.7		
11/06/2010	11:37:31	1	0.0	8.46	2.7		
11/06/2010	11:38:01	8	0.0	8.46	2.7		
11/06/2010	11:38:31	54	2.4	8.46	3.1		
11/06/2010	11:39:01	59	2.4	8.46	4.2		
11/06/2010	11:39:31	99	3.5	8.46	5.6		
11/06/2010	11:40:01	109	3.5	8.46	7.4		
11/06/2010	11:40:31	112	3.5	8.46	9.1		
11/06/2010	11:41:01	139	4.9	8.46	11.3		
11/06/2010	11:41:31	135	4.9	8.46	13.7		
11/06/2010	11:42:01	154	4.9	8.46	16.1		
11/06/2010	11:42:31	136	4.9	8.46	18.6		
11/06/2010	11:43:01	147	4.9	8.46	21.0		
11/06/2010	11:43:27					End Spacer	
11/06/2010	11:43:27	217	4.9	12.58	23.2		
11/06/2010	11:43:28					Start Cement Slurry	
11/06/2010	11:43:28	217	4.9	12.59	23.3		
11/06/2010	11:43:31					Start Mixing Lead Slurry	
11/06/2010	11:43:31	220	4.9	12.60	23.5		
11/06/2010	11:43:32					Mixing and pumping 12.5ppg lead slurry.	
11/06/2010	11:43:32	226	4.9	12.61	23.6		
11/06/2010	11:43:33					Good returns.	
11/06/2010	11:43:33	219	4.9	12.61	23.7		
11/06/2010	11:44:01	297	6.3	12.59	26.2		
11/06/2010	11:44:31	313	6.3	12.61	29.3		
11/06/2010	11:45:01	294	6.3	12.59	32.4		
11/06/2010	11:45:31	288	6.3	12.60	35.6		
11/06/2010	11:46:01	287	6.3	12.57	38.7		
11/06/2010	11:46:31	280	6.3	12.56	41.9		
11/06/2010	11:47:01	268	6.3	12.57	45.0		
11/06/2010	11:47:31	291	6.3	12.58	48.2		
11/06/2010	11:48:01	253	6.3	12.55	51.3		
11/06/2010	11:48:31	257	6.3	12.54	54.5		
11/06/2010	11:49:01	263	6.3	12.54	57.6		
11/06/2010	11:49:31	263	6.3	12.53	60.8		
11/06/2010	11:50:01	254	6.3	12.56	63.9		
11/06/2010	11:50:31	257	6.3	12.52	67.1		
11/06/2010	11:51:01	253	6.3	12.55	70.2		
11/06/2010	11:51:31	251	6.3	12.51	73.4		
11/06/2010	11:52:01	275	6.3	12.54	76.5		
11/06/2010	11:52:31	242	6.3	12.49	79.7		
11/06/2010	11:53:01	257	6.3	12.47	82.8		
11/06/2010	11:53:31	282	6.3	12.44	86.0		
11/06/2010	11:54:01	283	6.3	12.48	89.1		
11/06/2010	11:54:31	253	6.3	12.47	92.3		

Well MF10D E09 696 MF10D E09 696			Field NORTH PARACHUTE		Job Start Nov/06/2010	Customer ENCANA	Job Number B708-00189
Date	Time 24-hr clock	Treating Pressure PSI	Flow Rate B/M	Density LB/G	Volume BBL	Message	
11/06/2010	11:55:31	271	6.3	12.45	98.5		
11/06/2010	11:55:50					End Lead Slurry	
11/06/2010	11:55:50	176	4.9	12.43	100.3		
11/06/2010	11:55:52					Pumped 214sks/80bbbls of 12.5ppg lead.	
11/06/2010	11:55:52					Good returns.	
11/06/2010	11:55:52	157	4.9	12.40	100.5		
11/06/2010	11:56:01	167	4.9	12.42	101.2		
11/06/2010	11:56:31	166	4.9	12.42	103.7		
11/06/2010	11:57:01	188	4.9	13.51	106.2		
11/06/2010	11:57:31	220	4.9	13.96	108.6		
11/06/2010	11:58:01	203	4.9	14.34	111.1		
11/06/2010	11:58:31	177	4.9	13.66	113.5		
11/06/2010	11:59:01	104	3.5	14.19	115.4		
11/06/2010	11:59:25					Start Mixing Tail Slurry	
11/06/2010	11:59:25	108	3.5	14.11	116.8		
11/06/2010	11:59:28					Mixing and pumping 14.0ppg tail slurry.	
11/06/2010	11:59:28	122	3.5	14.15	117.0		
11/06/2010	11:59:29					Good returns.	
11/06/2010	11:59:29	126	3.5	14.15	117.0		
11/06/2010	11:59:31	123	3.5	14.15	117.1		
11/06/2010	12:00:01	101	3.5	13.79	118.9		
11/06/2010	12:00:31	124	3.5	13.68	120.6		
11/06/2010	12:01:01	118	3.5	14.70	122.3		
11/06/2010	12:01:31	117	3.5	13.62	124.0		
11/06/2010	12:02:01	122	3.5	13.87	125.8		
11/06/2010	12:02:31	119	3.5	14.29	127.5		
11/06/2010	12:03:01	113	3.5	14.15	129.3		
11/06/2010	12:03:31	110	3.5	14.16	131.0		
11/06/2010	12:04:01	104	3.5	13.90	132.7		
11/06/2010	12:04:31	122	3.4	14.23	134.5		
11/06/2010	12:05:01	119	3.5	14.05	136.2		
11/06/2010	12:05:04					End Tail Slurry	
11/06/2010	12:05:04	112	3.5	13.93	136.4		
11/06/2010	12:05:05					End Cement Slurry	
11/06/2010	12:05:05	113	3.5	13.87	136.4		
11/06/2010	12:05:06					Pumped 139sks/38bbbls of 14.0ppg tail .	
11/06/2010	12:05:06					Good returns.	
11/06/2010	12:05:06	113	3.5	13.87	136.5		
11/06/2010	12:05:31	112	3.5	14.34	137.9		
11/06/2010	12:06:00					Drop Top Plug	
11/06/2010	12:06:00	116	3.5	14.34	139.6		
11/06/2010	12:06:01					Start Displacement	
11/06/2010	12:06:01	116	3.5	14.29	139.6		
11/06/2010	12:06:31	128	3.4	14.34	141.4		
11/06/2010	12:07:01	102	3.5	14.30	143.1		
11/06/2010	12:07:31	102	3.5	13.49	144.8		
11/06/2010	12:08:01	114	3.5	13.52	146.5		
11/06/2010	12:08:31	7	0.0	13.61	147.0		
11/06/2010	12:09:01	9	0.0	13.59	147.0		
11/06/2010	12:09:31	10	0.0	13.57	147.0		
11/06/2010	12:10:01	11	0.0	13.57	147.0		
11/06/2010	12:10:31	10	0.0	13.60	147.0		
11/06/2010	12:11:01	37	2.7	9.34	147.7		
11/06/2010	12:11:31	19	2.5	9.26	149.0		

Well MF10D E09 696 MF10D E09 696			Field NORTH PARACHUTE		Job Start Nov/06/2010	Customer ENCANA	Job Number B708-00189
Date	Time 24-hr clock	Treating Pressure PSI	Flow Rate B/M	Density LB/G	Volume BBL	Message	
11/06/2010	12:12:31	99	5.0	9.11	152.2		
11/06/2010	12:13:01	88	5.0	9.03	154.7		
11/06/2010	12:13:31	71	5.3	9.18	157.2		
11/06/2010	12:14:01	82	5.0	8.78	159.7		
11/06/2010	12:14:31	81	5.0	8.76	162.2		
11/06/2010	12:15:01	82	5.0	8.60	164.7		
11/06/2010	12:15:31	82	5.0	8.59	167.2		
11/06/2010	12:16:01	82	5.0	8.49	169.7		
11/06/2010	12:16:31	84	5.0	8.47	172.2		
11/06/2010	12:17:01	83	5.0	8.49	174.7		
11/06/2010	12:17:31	87	4.9	8.50	177.2		
11/06/2010	12:18:01	83	5.0	8.49	179.6		
11/06/2010	12:18:31	80	4.9	8.48	182.1		
11/06/2010	12:19:01	81	5.0	8.34	184.6		
11/06/2010	12:19:31	83	4.9	8.44	187.1		
11/06/2010	12:20:01	87	5.0	8.43	189.6		
11/06/2010	12:20:31	88	5.0	8.28	192.1		
11/06/2010	12:21:01	92	5.0	8.41	194.6		
11/06/2010	12:21:31	102	5.0	8.41	197.0		
11/06/2010	12:22:01	109	4.9	8.45	199.5		
11/06/2010	12:22:31	110	5.0	8.31	202.0		
11/06/2010	12:23:01	140	4.9	8.42	204.5		
11/06/2010	12:23:31	140	4.9	8.46	206.9		
11/06/2010	12:24:01	163	4.9	8.45	209.4		
11/06/2010	12:24:31	169	4.9	8.46	211.8		
11/06/2010	12:25:01	188	4.8	8.46	214.3		
11/06/2010	12:25:31	215	4.8	8.46	216.7		
11/06/2010	12:26:01	240	4.8	8.46	219.1		
11/06/2010	12:26:31	229	4.9	8.44	221.5		
11/06/2010	12:27:01	246	4.9	8.46	224.0		
11/06/2010	12:27:31	269	4.9	8.40	226.4		
11/06/2010	12:28:01	309	6.2	8.46	229.1		
11/06/2010	12:28:31	340	6.2	8.46	232.2		
11/06/2010	12:29:01	365	6.2	8.46	235.3		
11/06/2010	12:29:31	388	6.2	8.46	238.5		
11/06/2010	12:30:01	389	6.2	8.46	241.6		
11/06/2010	12:30:31	406	6.2	8.46	245.9		
11/06/2010	12:30:43					Displace with fresh water.	
11/06/2010	12:30:43	392	6.2	8.46	247.1		
11/06/2010	12:30:44					Good returns.	
11/06/2010	12:30:44	383	6.2	8.46	247.2		
11/06/2010	12:31:01	404	6.2	8.46	249.0		
11/06/2010	12:31:03					Cement to surface at 80bbbls away of displacement.	
11/06/2010	12:31:03					Total of 35bbbls of cement to surface.	
11/06/2010	12:31:03	391	6.2	8.46	249.2		
11/06/2010	12:31:04					Good strong returns.	
11/06/2010	12:31:04	391	6.2	8.46	249.3		
11/06/2010	12:31:31	399	6.2	8.46	252.1		
11/06/2010	12:32:01	427	6.2	8.46	255.2		
11/06/2010	12:32:31	341	5.5	8.46	258.3		
11/06/2010	12:33:01	326	3.4	8.46	260.2		
11/06/2010	12:33:31	378	3.4	8.46	261.9		
11/06/2010	12:34:01	373	3.4	8.46	263.6		
11/06/2010	12:34:31	404	3.4	8.46	265.3		

Well MF10D E09 696 MF10D E09 696			Field NORTH PARACHUTE		Job Start Nov/06/2010		Customer ENCANA		Job Number B708-00189	
Date	Time 24-hr clock	Treating Pressure PSI	Flow Rate B/M	Density LB/G	Volume BBL	Message				
11/06/2010	12:35:31	371	2.5	8.46	268.7					
11/06/2010	12:36:01	755	0.5	8.46	269.6					
11/06/2010	12:36:31	707	0.0	8.46	269.6					
11/06/2010	12:36:54					Bump Top Plug				
11/06/2010	12:36:54	686	0.0	8.46	269.6					
11/06/2010	12:36:55					End Displacement				
11/06/2010	12:36:55	685	0.0	8.46	269.6					
11/06/2010	12:37:01					Bumped plug to 1100psi.				
11/06/2010	12:37:01					Final displacement was 108bbbls.				
11/06/2010	12:37:01	723	0.1	8.46	269.6					
11/06/2010	12:37:02					Bleed off pressure.				
11/06/2010	12:37:02	734	0.3	8.46	269.6					
11/06/2010	12:37:03					Check floats.				
11/06/2010	12:37:03					Floats held.				
11/06/2010	12:37:03					Got 1bbl back.				
11/06/2010	12:37:03					Good returns for entire job.				
11/06/2010	12:37:03	747	0.3	8.46	269.6					
11/06/2010	12:37:04					Total cement to surface was 35bbbls.				
11/06/2010	12:37:04	747	0.5	8.46	269.6					
11/06/2010	12:37:31	1139	0.0	8.46	269.8					
11/06/2010	12:38:01	1139	0.0	8.46	269.8					
11/06/2010	12:38:31	1138	0.0	8.46	269.8					
11/06/2010	12:39:01	1137	0.0	8.46	269.8					
11/06/2010	12:39:31	233	0.0	8.46	269.8					
11/06/2010	12:40:01	1	0.3	8.46	269.9					
11/06/2010	12:40:31	1	0.0	8.46	269.9					
11/06/2010	12:41:01	1	0.0	8.46	269.9					
11/06/2010	12:41:31	1	0.0	8.46	269.9					
11/06/2010	12:42:01	1	0.0	8.46	269.9					
11/06/2010	12:42:31	1	0.0	8.46	269.9					
11/06/2010	12:43:01	1	0.0	8.46	269.9					
11/06/2010	12:43:31	-7	0.0	8.46	269.9					
11/06/2010	12:44:01	-23	0.0	8.46	269.9					
11/06/2010	12:44:31	-4	0.0	8.46	269.9					
11/06/2010	12:45:01	-1	0.0	8.46	269.9					
11/06/2010	12:45:31	1	0.0	8.46	269.9					
11/06/2010	12:46:01	1	0.0	8.46	269.9					
11/06/2010	12:46:31	1	0.0	8.46	269.9					
11/06/2010	12:47:01	1	0.0	8.46	269.9					
11/06/2010	12:47:31	1	0.0	8.46	269.9					
11/06/2010	12:48:01	1	0.0	8.46	269.9					
11/06/2010	12:48:31	1	0.0	8.46	269.9					
11/06/2010	12:49:01	1	0.0	8.47	269.9					
11/06/2010	12:49:31	1	0.0	8.46	269.9					
11/06/2010	12:49:38					End Job				
11/06/2010	12:49:38	1	0.0	8.47	269.9					
11/06/2010	12:50:01	1	0.0	8.46	269.9					
11/06/2010	12:50:31	1	0.0	8.46	269.9					

Well MF10D E09 696 MF10D E09 696	Field NORTH PARACHUTE	Job Start Nov/06/2010	Customer ENCANA	Job Number B708-00189
-------------------------------------	--------------------------	--------------------------	--------------------	--------------------------

Post Job Summary

Average Pump Rates, bbl/min					Volume of Fluid Injected, bbl			
Slurry 6.0	N2	Mud	Maximum Rate 6.0	Total Slurry 119.0	Mud	Spacer 20.0	N2	
Treating Pressure Summary, psi					Breakdown Fluid			
Maximum 3000	Final 1100	Average 200	Bump Plug to 1100	Breakdown	Type	Volume	Density	
Avg. N2 Percent	Designed Slurry Volume 119.0 bbl		Displacement 115.0 bbl	Mix Water Temp 50 degF	Cement Circulated to Surface? <input checked="" type="checkbox"/>	Volume 35.0 bbl		
					Washed Thru Perfs <input type="checkbox"/>	To		
Customer or Authorized Representative nORM McREARY			Schlumberger Supervisor JEFF PATTERSON			Circulation Lost <input type="checkbox"/>	Job Completed <input checked="" type="checkbox"/>	
						-	-	