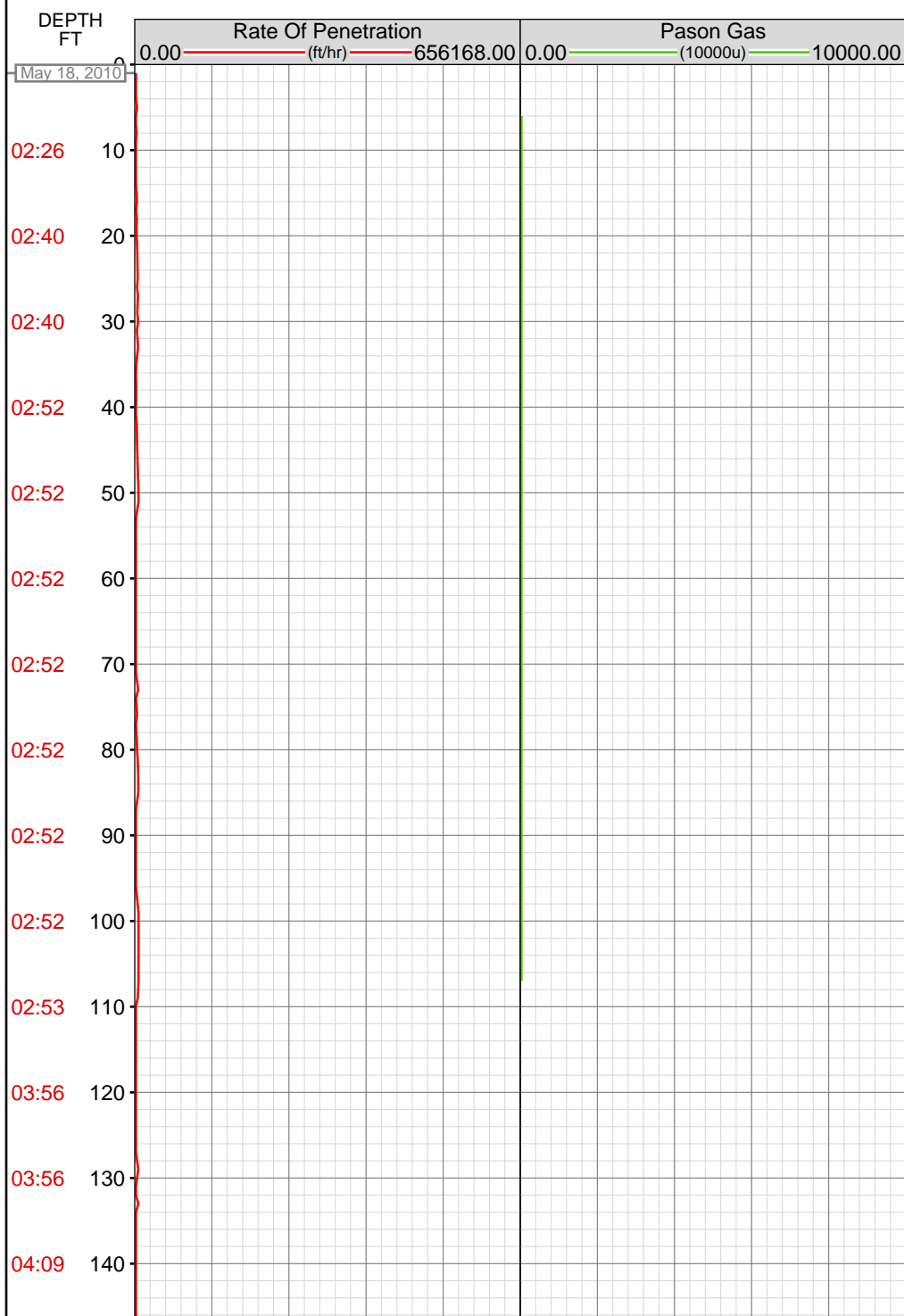


DataHub EDR Log

Thu May 27, 2010 15:33:00
Well Dossier 1274152073
Marilyn Tucker

OPERATOR: EnCana Oil & Gas (USA), Inc.
WELL: NP WF10B-21 K-22 596
FIELD:
LOCATION: NESW SEC22 TWP5S R96W M6TH
COUNTRY: USA
RIG: Pat-UTI 303

CONTRACTOR: Patterson-UTI Drilling Company
UNIQUE WELL ID: 05-045-18916-00
SPUD DATE: May 18, 2010 06:00
RELEASE DATE: May 23, 2010 23:30



MEMOS

5.00imperial: MUD WEIGHT 8.60
5.63imperial: MUD VIS 0.42

110.75imperial: MUD VIS 0.48
110.75imperial: MUD WEIGHT 8.65

04:09 150 -

04:09 160 -

04:09 170 -

04:09 180 -

04:09 190 -

04:09 200 -

04:09 210-

04:09 220 -

04:11 230 -

04:11 240 -

04:11 250 -

04:11 260 -

04:11 270 -

04:11 280 -

04:11 290 -

04:11 300 -

04:11 310-

04:13 320 -

04:13 330 -

04:13 340 -

04:13 350 -

04:13 360 -

04:13 370

04:13 380

04:13 390

04:13 400

04:13 410

04:15 420

04:15 430

04:15 440

04:15 450

04:15 460

04:15 470

04:15 480

04:15 490

04:15 500

04:17 510

04:17 520

04:17 530

04:17 540

04:17 550

04:17 560

04:17 570

04:17 580

04:17 590

04:17 600

04:34 610

04:40 620

04:40 630

04:40 640

04:40 650

04:40 660

04:40 670

04:40 680

04:40 690

04:43 700

04:43 710

04:43 720

04:43 730

04:43 740

04:43 750

04:43 760

04:43 770

04:43 780

04:44 790

04:44 800

04:44 810

04:44 820

04:44 830

04:44 840

04:44 850

04:44 860

04:44 870

04:45 880

04:46 890

04:46 900

04:46 910

04:46 920

04:46 930

04:46 940

04:46 950

04:46 960

04:46 970

04:48 980

04:48 990

04:48 1000

04:48 1010

04:48 1020

04:48 1030

04:48 1040

04:48 1050

04:48 1060

04:49 1070

04:49 1080

04:49 1090

04:49 1100

04:49 1110

04:49 1120

04:49 1130

04:49 1140

04:49 1150

04:50 1160

04:54 1170

04:54 1180

04:54 1190

04:54 1200

04:54 1210

04:54 1220

04:54 1230

04:54 1240

04:54 1250

04:55 1260

04:55 1270

04:55 1280

04:55 1290

04:55 1300

04:55 1310

04:55 1320

04:56 1330

04:56 1340

04:57 1350

04:57 1360

04:57 1370

04:57 1380

04:57 1390

04:57 1400

04:57 1410

04:57 1420

04:57 1430

04:59 1440

04:59 1450

04:59 1460

04:59 1470

04:59 1480

04:59 1490

04:59 1500

04:59 1510

04:59 1520

04:59 1530

05:01 1540

05:01 1550

05:01 1560

05:01 1570

05:03 1620

05:03 1630

05:04 1640

05:04 1650

05:07 1660

05:26 1670

05:36 1680

05:37 1690

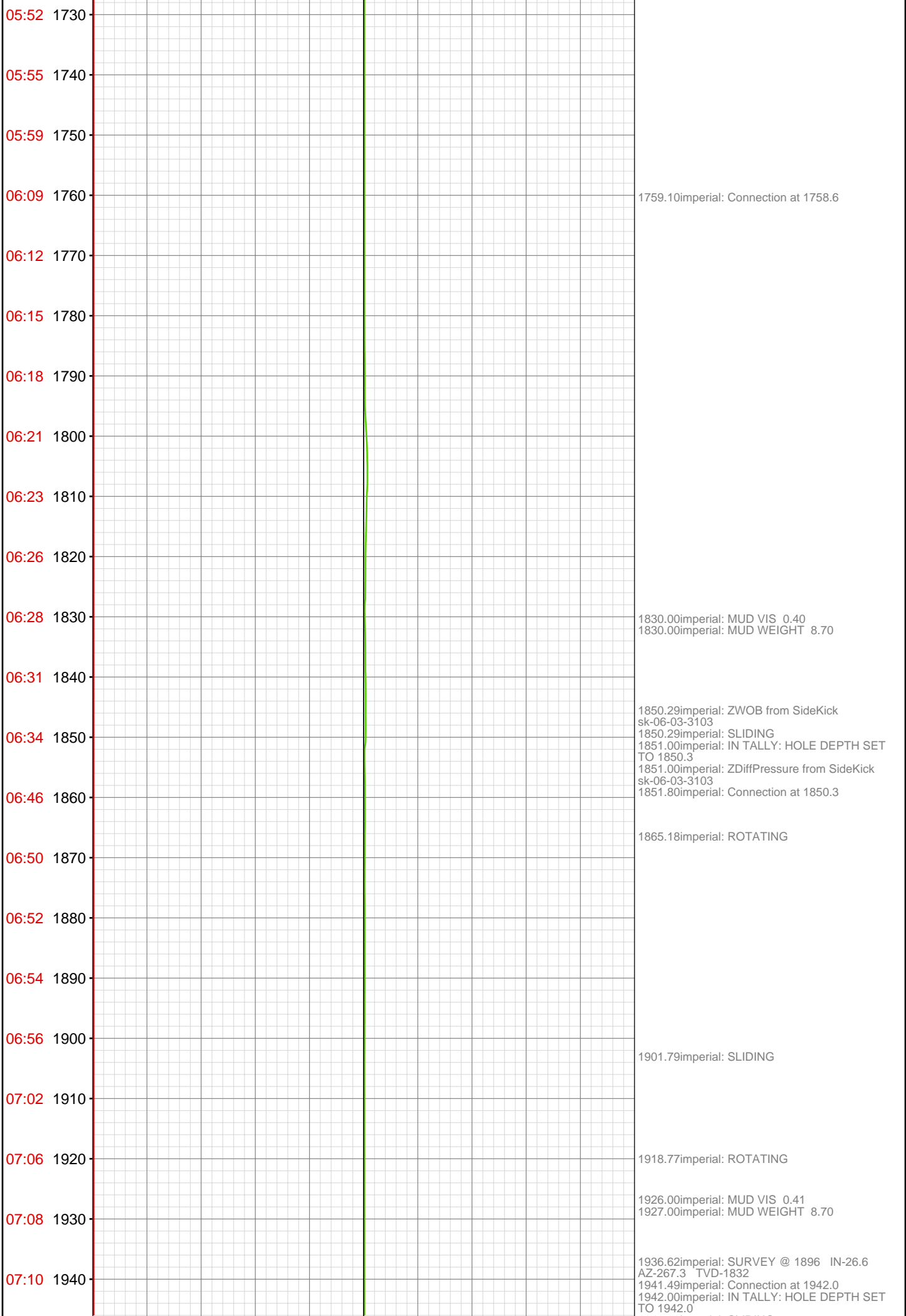
05:41 1700

05:45 1710

05:48 1720

1624.00imperial: MUD WEIGHT 8.65
1624.00imperial: HOLE DEPTH CHANGED TO
1575.0 FEET
1624.36imperial: MUD VIS 0.45

1663.00imperial: ZERO ALL PUMPS from
SideKick sk-06-03-3103
1663.00imperial: ZWOB from SideKick
sk-06-03-3103
1663.00imperial: ZDiffPressure from SideKick
sk-06-03-3103
1670.32imperial: Connection at 1666.9



1942.02imperial: SLIDING

Time	Depth (ft)	Remarks
07:20	1950	
07:24	1960	
07:26	1970	1964.53imperial: ROTATING
07:28	1980	
07:34	1990	1983.65imperial: SURVEY @ IN-28.7 AZ-269.1 TVD-1868
07:39	2000	1999.81imperial: ROTATING
07:41	2010	
07:43	2020	
07:45	2030	2033.67imperial: SURVEY @ 1983 IN-30.1 AZ-268.9 TVD-1908
07:55	2040	2033.67imperial: SLIDING 2034.00imperial: IN TALLY: HOLE DEPTH SET TO 2033.7 2034.34imperial: Connection at 2033.7
07:58	2050	2048.00imperial: MUD VIS 0.38 2048.00imperial: MUD WEIGHT 8.80
08:01	2060	
08:05	2070	
08:07	2080	2073.34imperial: ROTATING
08:08	2090	
08:10	2100	
08:13	2110	
08:15	2120	2122.32imperial: Connection at 2125.3 2125.00imperial: IN TALLY: HOLE DEPTH SET TO 2125.4
08:25	2130	2125.00imperial: ZDiffPressure from SideKick sk-06-03-3103 2125.35imperial: SLIDING
08:28	2140	
08:32	2150	
08:35	2160	

08:38 2170-

2174.02imperial: BOP DRILL

08:47 2180-

08:49 2190-

08:51 2200-

08:53 2210-

2211.00imperial: MUD VIS 0.39
2212.00imperial: MUD WEIGHT 8.80
2217.84imperial: Connection at 2217.0
2217.84imperial: SURVEY @ 2167 IN-36
AZ-268.4 TVD-2062
2217.84imperial: SLIDING

09:01 2220-

09:04 2230-

09:08 2240-

09:11 2250-

09:14 2260-

2258.64imperial: ROTATING

09:16 2270-

09:18 2280-

09:20 2290-

09:22 2300-

09:31 2310-

2308.61imperial: SLIDING
2309.00imperial: IN TALLY: HOLE DEPTH SET
TO 2308.6
2309.43imperial: Connection at 2308.6

09:34 2320-

2315.90imperial: SURVEY @ 2258 IN-40.2
AZ-266.8 TVD2134

09:38 2330-

09:42 2340-

09:45 2350-

2347.67imperial: ROTATING

09:47 2360-

09:49 2370-

09:51 2380-

09:53 2390
09:55 2400
10:04 2410
10:07 2420
10:11 2430
10:13 2440
10:14 2450
10:17 2460
10:19 2470
10:21 2480
10:23 2490
10:32 2500
10:34 2510
10:35 2520
10:37 2530
10:39 2540
10:42 2550
10:44 2560
10:46 2570
10:48 2580
10:57 2590
11:00 2600

2400.33imperial: Connection at 2400.3
2400.33imperial: MUD VIS 0.40
2400.35imperial: SLIDING SURVEY @ 2350
in-43.8 AZ-266.2 TVD-2202
2401.00imperial: IN TALLY: HOLE DEPTH SET
TO 2400.3
2401.00imperial: MUD WEIGHT 8.90

2426.49imperial: ROTATING

2463.54imperial: PUMP SWEEP

2490.23imperial: Connection at 2492.1
2492.00imperial: ZWOB from SideKick
sk-06-03-3103
2492.00imperial: ZDiffPressure from SideKick
sk-06-03-3103
2492.07imperial: IN TALLY: HOLE DEPTH SET
TO 2492.1
2492.07imperial: SURVEY @ 2442 IN-45.7
AZ-265.6 TVD-2268

2583.33imperial: Connection at 2583.8
2583.82imperial: SURVEY @ 2533 IN-43.3
AZ-266.2 TVD-2333
2583.82imperial: SLIDING
2584.00imperial: IN TALLY: HOLE DEPTH SET
TO 2583.8

11:03 2610

2607.89imperial: ROTATING

11:05 2620

11:08 2630

11:10 2640

11:12 2650

11:14 2660

11:16 2670

2675.00imperial: ZDiffPressure from SideKick
sk-06-03-3103
2675.67imperial: Connection at 2675.6
2675.67imperial: SURVEY @ 2625 IN-45
AZ-265.1 TVD-2399

11:22 2680

11:24 2690

11:26 2700

11:28 2710

11:30 2720

11:32 2730

11:34 2740

11:36 2750

11:38 2760

2765.39imperial: Connection at 2767.4
2767.45imperial: SURVEY @ 2717 IN-43.2
AZ-264.9 TVD-2465
2767.45imperial: SLIDING
2768.00imperial: IN TALLY: HOLE DEPTH SET
TO 2767.4
2776.00imperial: MUD VIS 0.39
2776.57imperial: MUD WEIGHT 8.90

11:45 2770

11:48 2780

11:50 2790

2794.25imperial: ROTATING

11:54 2800

11:56 2810

11:57 2820

11:59 2830

12:02 2840

12:04 2850

12:06 2860

2860.12imperial: Connection at 2859.1
2860.12imperial: SURVEY @ 2809 IN-43.5
AZ-265.1 TVD-2531
2863.19imperial: ROTATING

12:13 2870

12:15 2880

12:16 2890

12:18 2900

12:20 2910

12:22 2920

12:24 2930

12:26 2940

12:29 2950

2950.00imperial: IN TALLY: HOLE DEPTH SET
TO 2950.7
2950.74imperial: SLIDING
2952.53imperial: Connection at 2950.7
2953.16imperial: SURVEY @ 2900 IN-42.8
AZ-266 TVD-2598

12:37 2960

12:41 2970

2967.84imperial: PUMP OUT CELLAR

12:45 2980

12:48 2990

2986.74imperial: ROTATING

12:50 3000

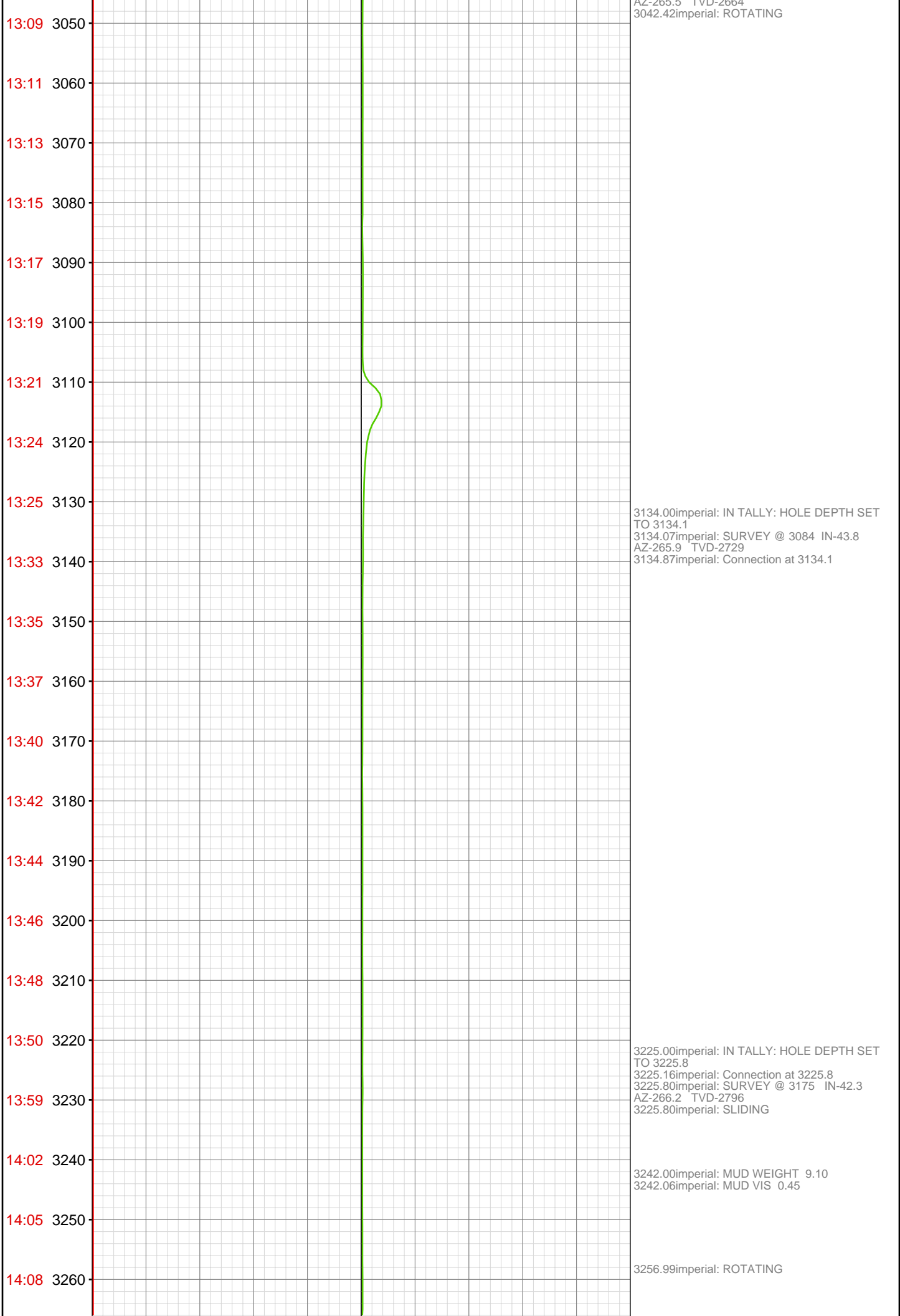
12:53 3010

12:54 3020

12:57 3030

13:00 3040

3033.00imperial: MUD VIS 0.42
3034.00imperial: MUD WEIGHT 9.10
3041.94imperial: Connection at 3042.4
3042.00imperial: IN TALLY: HOLE DEPTH SET
TO 3042.4
3042.42imperial: SURVEY @ 2992 IN-45.4
AZ-267 TVD-2601



14:10 3270

14:12 3280

14:15 3290

14:17 3300

14:19 3310

14:27 3320

14:30 3330

14:32 3340

14:34 3350

14:36 3360

14:38 3370

14:40 3380

14:42 3390

14:44 3400

14:52 3410

14:55 3420

14:59 3430

15:03 3440

15:05 3450

15:09 3460

15:11 3470

15:13 3480

3316.90imperial: Connection at 3317.5
3317.45imperial: SURVEY @ 3267 IN-43
AZ-267 TVD-2864
3318.01imperial: IN TALLY: HOLE DEPTH SET
TO 3317.5
3318.01imperial: ZDiffPressure from SideKick
sk-06-03-3103
3318.01imperial: ZWOB from SideKick
sk-06-03-3103

3348.36imperial: PUMP SWEEP

3408.37imperial: Connection at 3409.2
3408.99imperial: IN TALLY: HOLE DEPTH SET
TO 3409.2
3409.22imperial: SLIDING

3431.00imperial: MUD VIS 0.43
3431.00imperial: MUD WEIGHT 9.20

3453.44imperial: ROTATING

15:15 3490

15:18 3500

15:27 3510

15:30 3520

15:34 3530

15:37 3540

15:41 3550

15:43 3560

15:45 3570

15:47 3580

15:49 3590

15:58 3600

16:00 3610

16:02 3620

16:04 3630

16:06 3640

16:08 3650

16:11 3660

16:14 3670

16:16 3680

16:25 3690

16:29 3700

3500.46imperial: SURVEY @ 3450 IN-43.6
AZ-266.2 TVD-2999
3500.46imperial: SLIDING
3501.84imperial: Connection at 3500.5
3502.00imperial: 021TGAS 03090394 SW0.27
HW25.00 - 51 days on
3502.00imperial: IN TALLY: HOLE DEPTH SET
TO 3500.5

3525.98imperial: ZWOB from SideKick
sk-06-03-3103
3525.98imperial: ZDiffPressure from SideKick
sk-06-03-3103

3591.99imperial: IN TALLY: HOLE DEPTH SET
TO 3592.0
3592.03imperial: SURVEY @ 3542 INC 44.6 AZI
266.8 TVD 3065.73
3592.03imperial: ROTATING
3592.98imperial: Connection at 3592.0
3596.00imperial: MUD VIS 0.45
3596.00imperial: MUD WEIGHT 9.20

3644.88imperial: PUMP SWEEP

3683.69imperial: Connection at 3683.7
3683.69imperial: SURVEY @ 3633 INC 43.4 AZI
265.6
3683.69imperial: SLIDING
3683.69imperial: ZDiffPressure from SideKick
sk-06-03-3103
3683.99imperial: IN TALLY: HOLE DEPTH SET
TO 3683.7
3683.99imperial: ZWOB from SideKick
sk-06-03-3103

16:32 3710
16:35 3720
16:38 3730
16:40 3740
16:42 3750
16:44 3760
16:46 3770
16:55 3780
17:01 3790
17:05 3800
17:10 3810
17:12 3820
17:14 3830
17:16 3840
17:18 3850
17:21 3860
17:37 3870
17:40 3880
17:42 3890
17:44 3900
17:46 3910
17:48 3920

3714.99imperial: ZWOB from SideKick
sk-06-03-3103
3715.91imperial: ROTATING

3775.33imperial: SURVEY @ 3725' INC. 44.8 AZI.
265.8
3775.33imperial: SLIDING
3775.49imperial: Connection at 3775.3
3775.98imperial: IN TALLY: HOLE DEPTH SET
TO 3775.3
3783.01imperial: MUD VIS 0.44
3783.01imperial: MUD WEIGHT 9.10

3806.99imperial: ZDiffPressure from SideKick
sk-06-03-3103
3807.87imperial: ROTATING
3807.87imperial: ZWOB from SideKick
sk-06-03-3103

3866.96imperial: RIG SERVICE
3866.96imperial: SURVEY 3816 INC 47 AZI 267.6
TVD 3260.59
3866.96imperial: Connection at 3867.0
ROTATING
3866.99imperial: IN TALLY: HOLE DEPTH SET
TO 3867.0

17:50 3930
17:52 3940
17:54 3950
18:07 3960
18:09 3970
18:12 3980
18:14 3990
18:16 4000
18:18 4010
18:21 4020
18:24 4030
18:27 4040
18:29 4050
18:39 4060
18:44 4070
18:50 4080
18:53 4090
18:55 4100
18:56 4110
18:59 4120
19:01 4130
19:04 4140



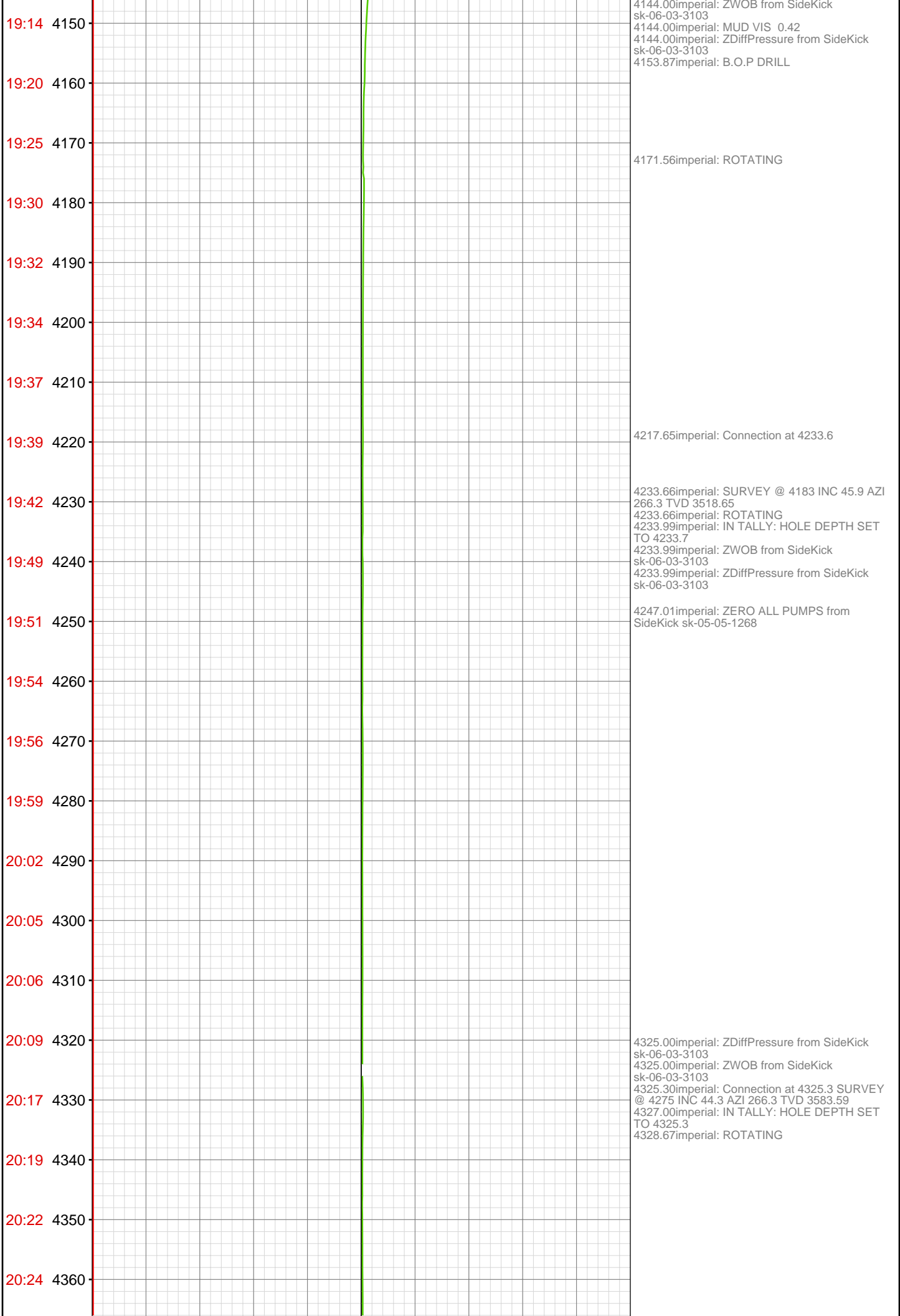
3958.60imperial: SURVEY 3908 INC 45.6 AZI
265.6 TVD 3324.15
3958.60imperial: Connection at 3958.6
3958.60imperial: ZWOB from SideKick
sk-06-03-3103
3958.99imperial: IN TALLY: HOLE DEPTH SET
TO 3958.6
3958.99imperial: ZDiffPressure from SideKick
sk-06-03-3103

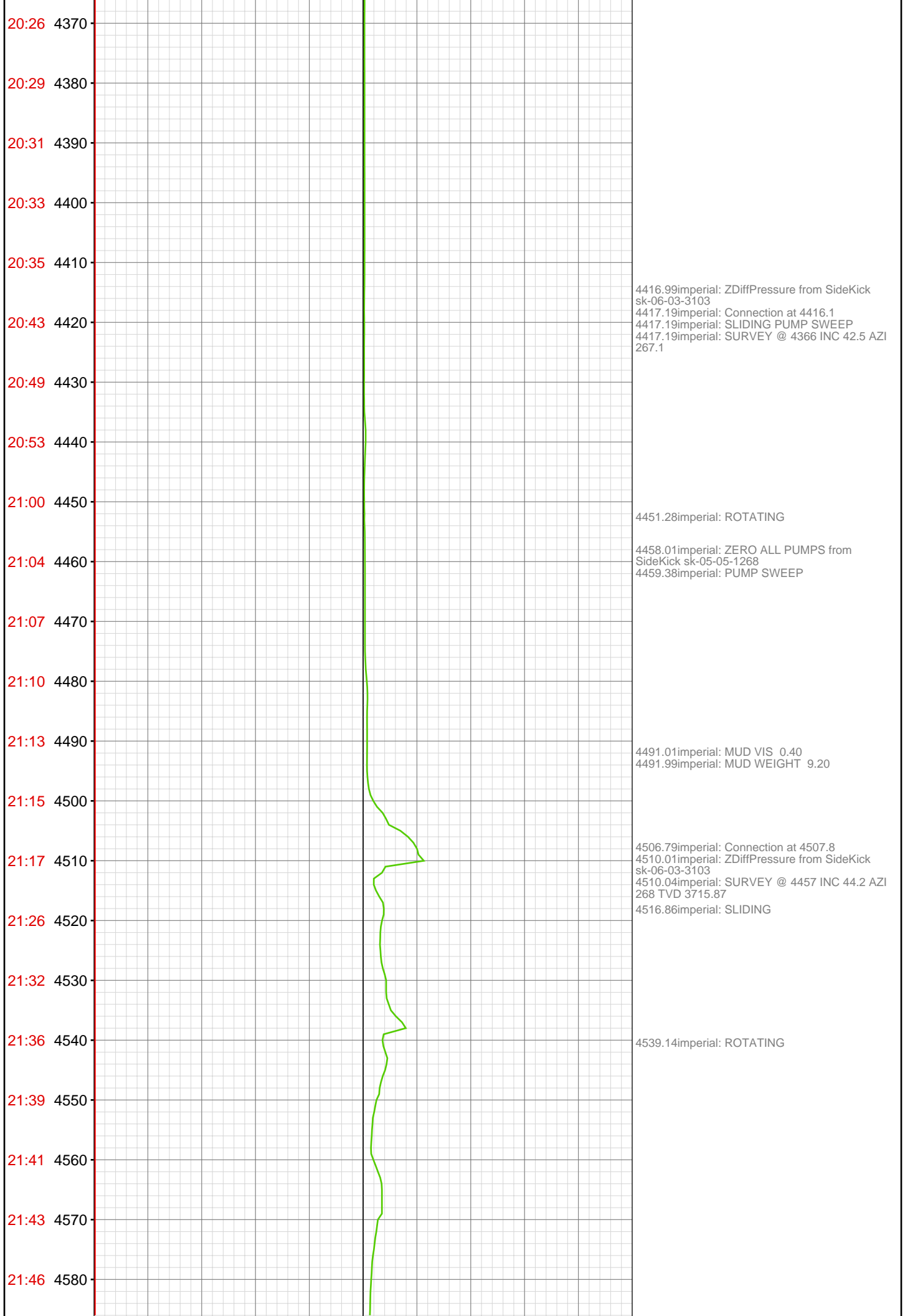
3990.12imperial: ROTATING

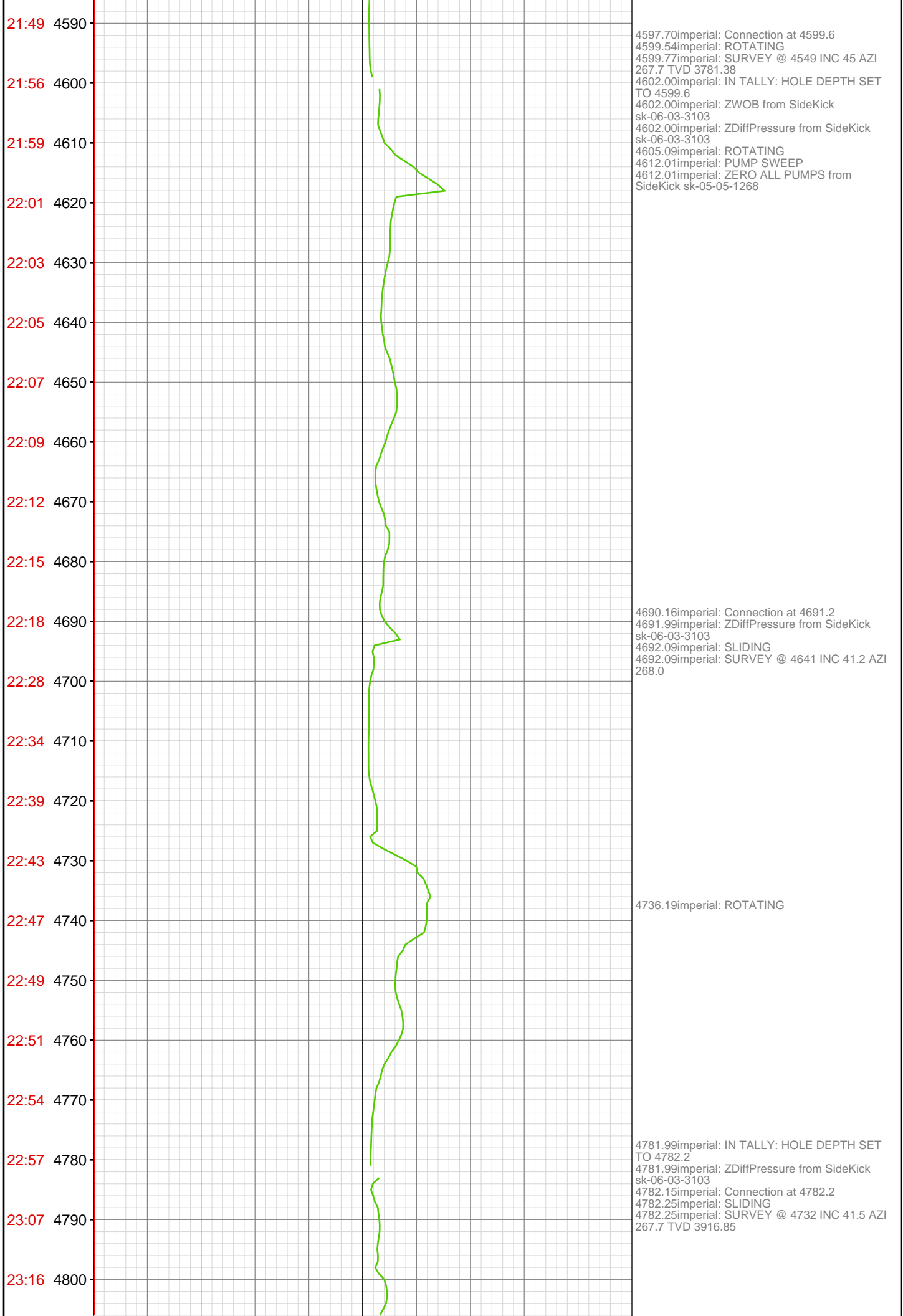
4050.98imperial: MUD VIS 0.44
4050.98imperial: MUD WEIGHT 8.90
4051.38imperial: Connection at 4050.3
4051.38imperial: SURVEY @ 4000 INC 44.0 AZI
266.0
4052.79imperial: SLIDING

4078.45imperial: ROTATING

4141.86imperial: MUD WEIGHT 9.20
4141.86imperial: SURVEY @ 4091 INC 45.2 AZI
266.4 TVD 3454.22
4142.09imperial: SLIDING
4144.00imperial: Connection at 4141.9
4144.00imperial: IN TALLY: HOLE DEPTH SET
TO 4141.9







23:22 4810
23:29 4820
23:31 4830
23:34 4840
23:36 4850
23:38 4860
23:40 4870
23:48 4880
23:50 4890
23:52 4900
23:55 4910
23:57 4920
23:59 4930
May 19, 2010
00:02 4940
00:04 4950
00:06 4960
00:18 4970
00:21 4980
00:23 4990
00:27 5000
00:29 5010
00:32 5020

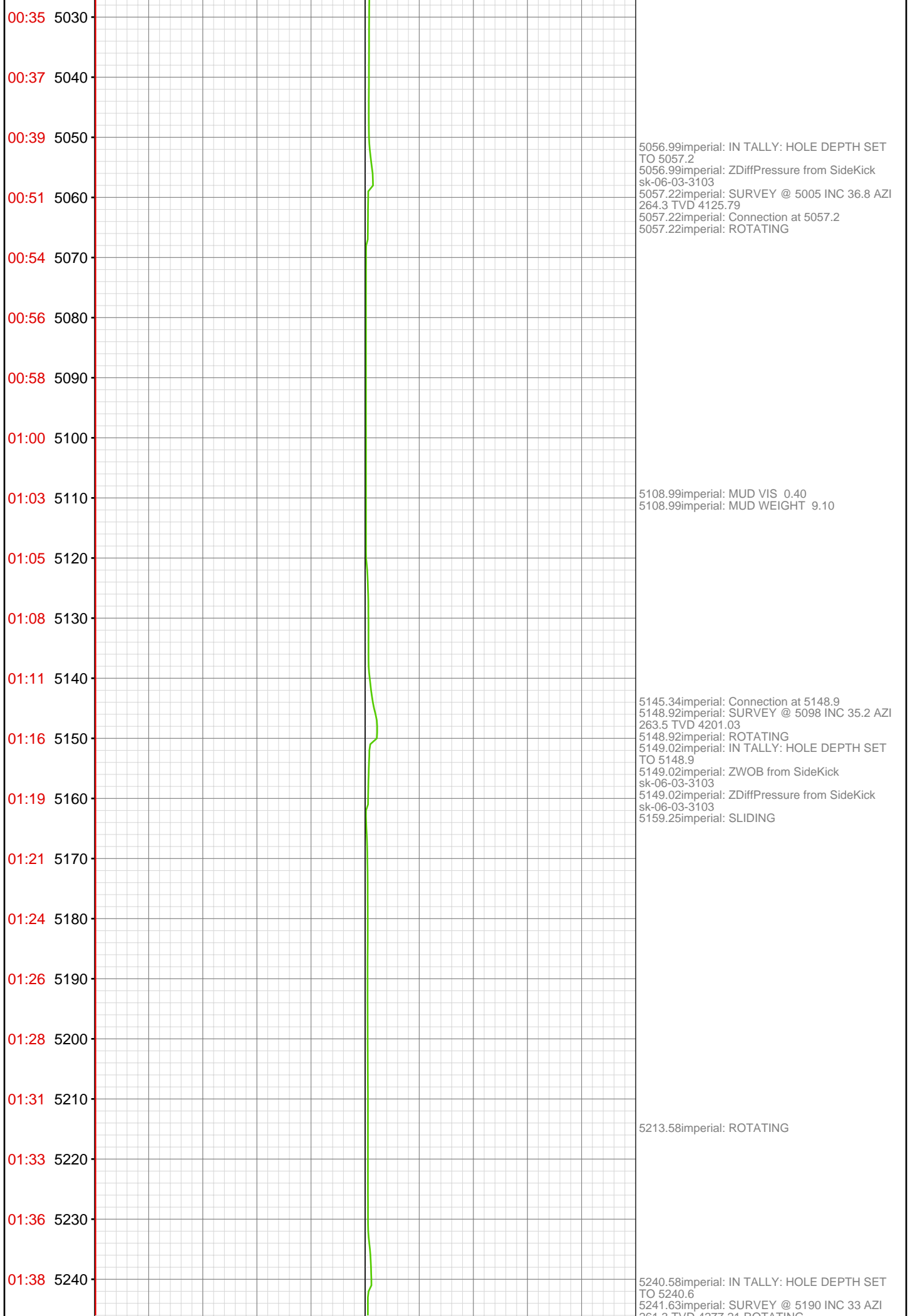


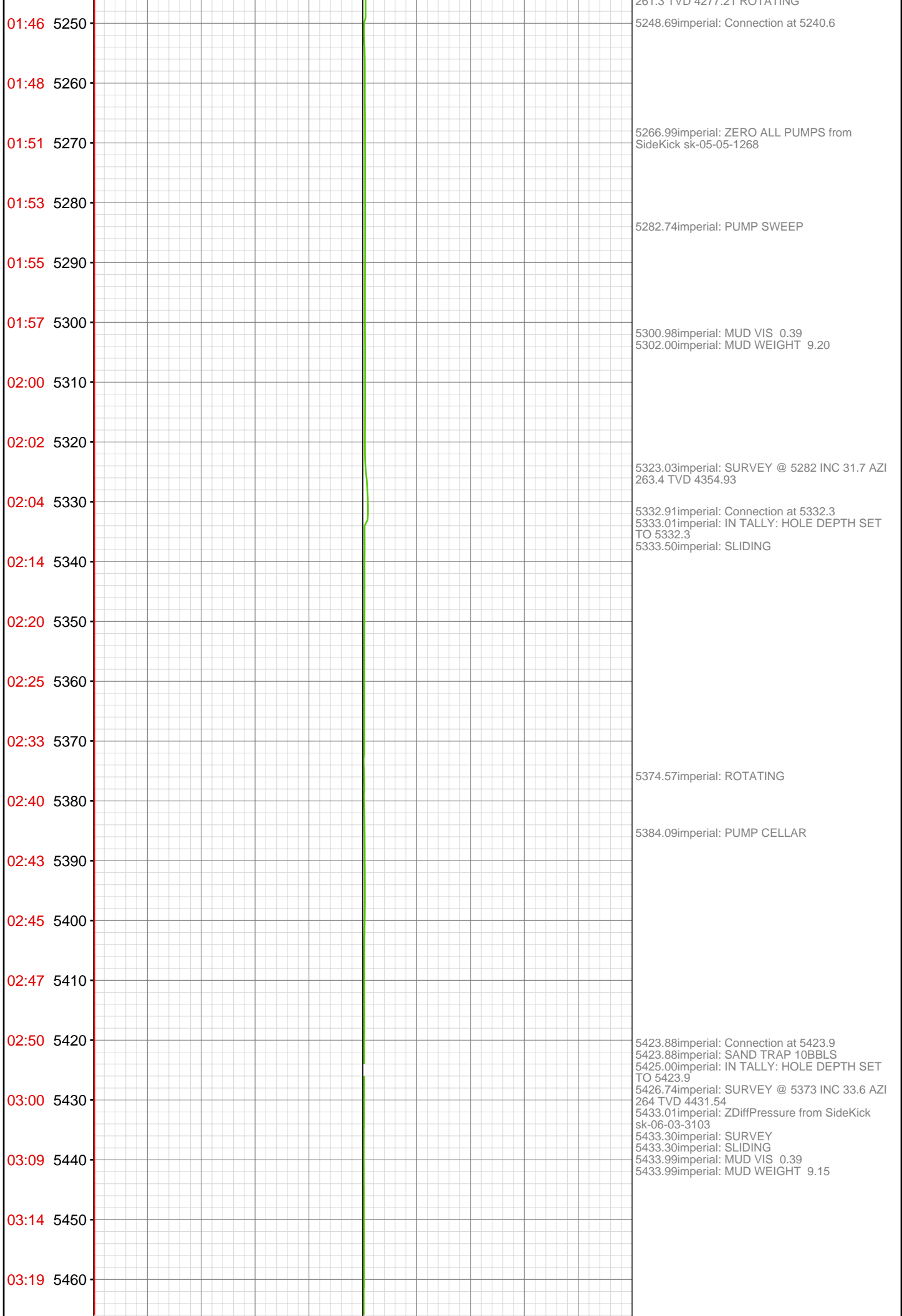
4810.99imperial: ZDiffPressure from SideKick
sk-06-03-3103
4814.47imperial: ROTATING PUMP SWEEP
4816.01imperial: MUD VIS 0.42
4816.01imperial: MUD WEIGHT 9.20
4816.99imperial: ZERO ALL PUMPS from
SideKick sk-05-05-1268

4873.00imperial: ZDiffPressure from SideKick
sk-06-03-3103
4873.00imperial: ZWOB from SideKick
sk-06-03-3103
4873.92imperial: SURVEY @ 4823 INC 42.4 AZI
265.5 TVD 3984.54
4873.92imperial: ROTATING
4873.92imperial: Connection at 4873.9
4875.00imperial: IN TALLY: HOLE DEPTH SET
TO 4873.9

4933.99imperial: MUD VIS 0.41
4933.99imperial: MUD WEIGHT 9.20

4965.49imperial: SPR @4965 #1 40 @ 400
4965.49imperial: SURVEY @ 4915 INC 38.5 AZI
264.1 TVD 4054.53 Connection at 4965.5
4965.49imperial: ROTATING
4966.01imperial: IN TALLY: HOLE DEPTH SET
TO 4965.5
4966.01imperial: ZWOB from SideKick
sk-06-03-3103
4966.01imperial: ZDiffPressure from SideKick
sk-06-03-3103
4979.00imperial: ZERO ALL PUMPS from
SideKick sk-05-05-1268
4980.71imperial: PUMP SWEEP





03:25 5470

5468.77imperial: ROTATING

03:29 5480

5475.98imperial: ZERO ALL PUMPS from
SideKick sk-05-05-1268

03:32 5490

03:34 5500

03:38 5510

5514.73imperial: Connection at 5515.5
5515.52imperial: SURVEY @ 5465 INC 33.7 AZI
267.3 TVD 4508.14
5516.01imperial: IN TALLY: HOLE DEPTH SET
TO 5515.5
5516.01imperial: ZWOB from SideKick
sk-06-03-3103
5516.01imperial: ZDiffPressure from SideKick
sk-06-03-3103

03:46 5520

03:49 5530

03:51 5540

03:53 5550

03:56 5560

03:59 5570

04:01 5580

04:04 5590

04:08 5600

04:26 5610

5608.01imperial: ZDiffPressure from SideKick
sk-06-03-3103
5608.33imperial: SLIDING
5608.33imperial: Connection at 5607.2 SPR
5608.33imperial: SURVEY @ 5557 INC 32.7 AZI
270.7 TVD 4585.12
5614.73imperial: SLIDING

04:34 5620

04:41 5630

04:47 5640

5638.39imperial: ROTATING

04:51 5650

04:53 5660

04:56 5670

04:59 5680

05:01 5690
05:04 5700
05:13 5710
05:16 5720
05:18 5730
05:21 5740
05:23 5750
05:26 5760
05:29 5770
05:32 5780
05:35 5790
05:44 5800
05:48 5810
05:50 5820
05:53 5830
05:56 5840
05:58 5850
06:01 5860
06:04 5870
06:07 5880
06:21 5890
06:29 5900

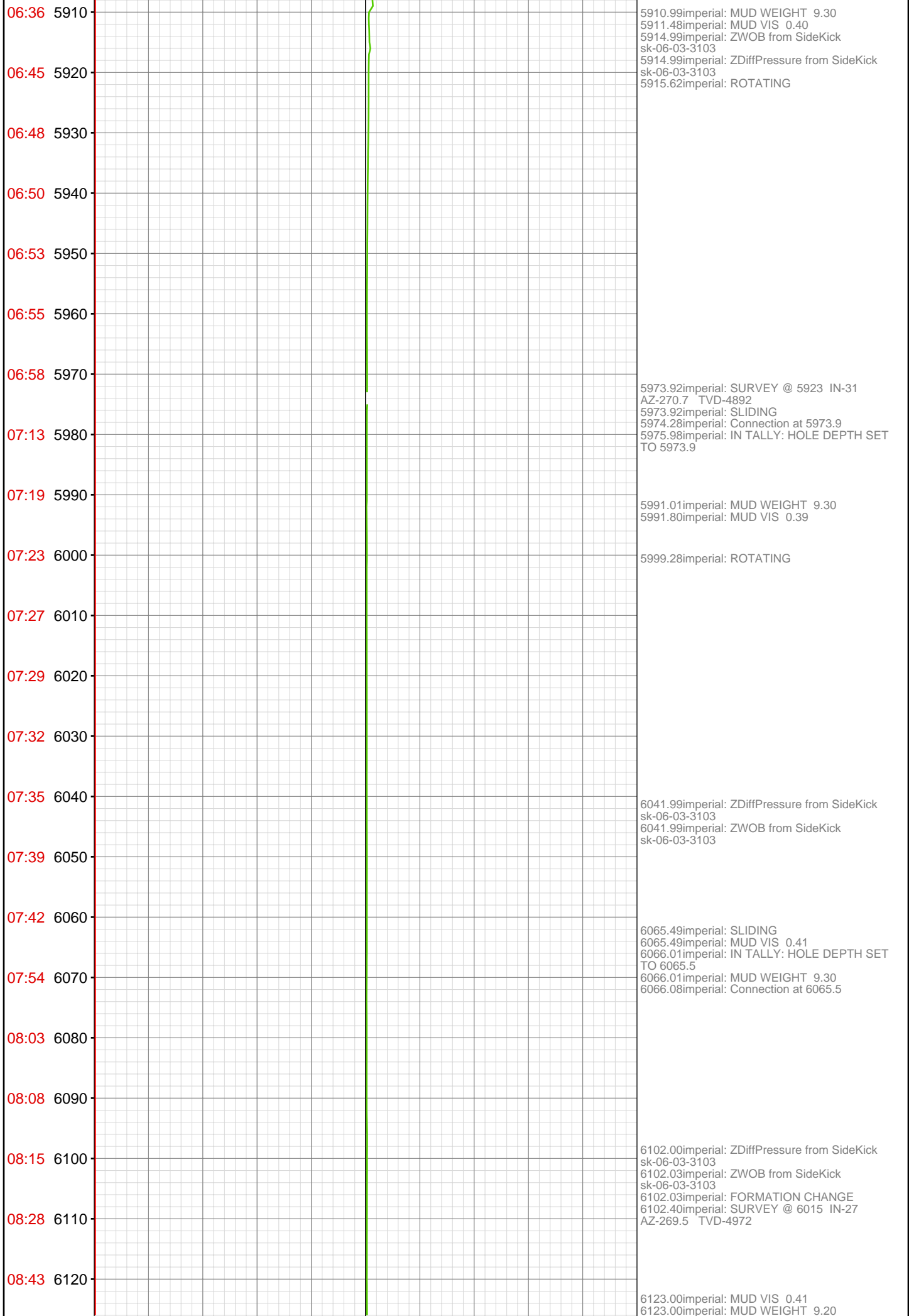
5700.98imperial: MUD VIS 0.41
5700.98imperial: MUD WEIGHT 9.30
5700.98imperial: ZWOB from SideKick
sk-06-03-3103
5700.98imperial: ZDiffPressure from SideKick
sk-06-03-3103
5701.12imperial: Connection at 5698.9
5701.12imperial: SURVEY @ 5648 IN-34.4
AZ-274.3 TVD-4660

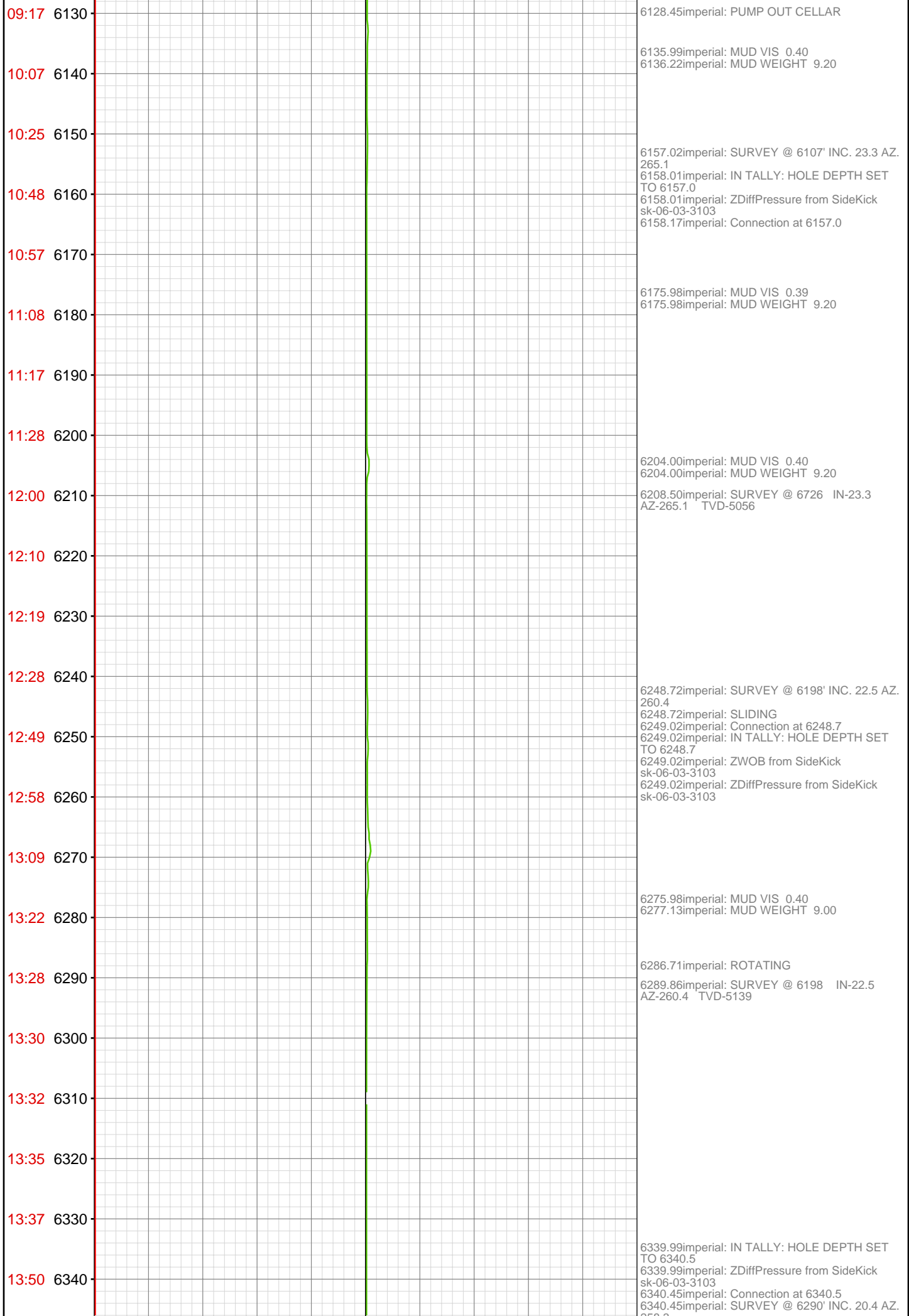
5714.99imperial: PUMP SWEEP

5723.00imperial: ZERO ALL PUMPS from
SideKick sk-05-05-1268

5790.68imperial: Connection at 5790.7
5790.68imperial: SURVEY @ 5740 IN-33.1
AZ-274.9 TVD-4737
5790.68imperial: ZDiffPressure from SideKick
sk-06-03-3103
5793.01imperial: IN TALLY: HOLE DEPTH SET
TO 5790.7
5793.01imperial: ZWOB from SideKick
sk-06-03-3103

5882.38imperial: SURVEY @ 5832 IN-32.2
AZ-274.5 TVD-4814
5882.38imperial: SLIDING
5883.01imperial: IN TALLY: HOLE DEPTH SET
TO 5882.4
5883.30imperial: Connection at 5882.4





[illegible]

