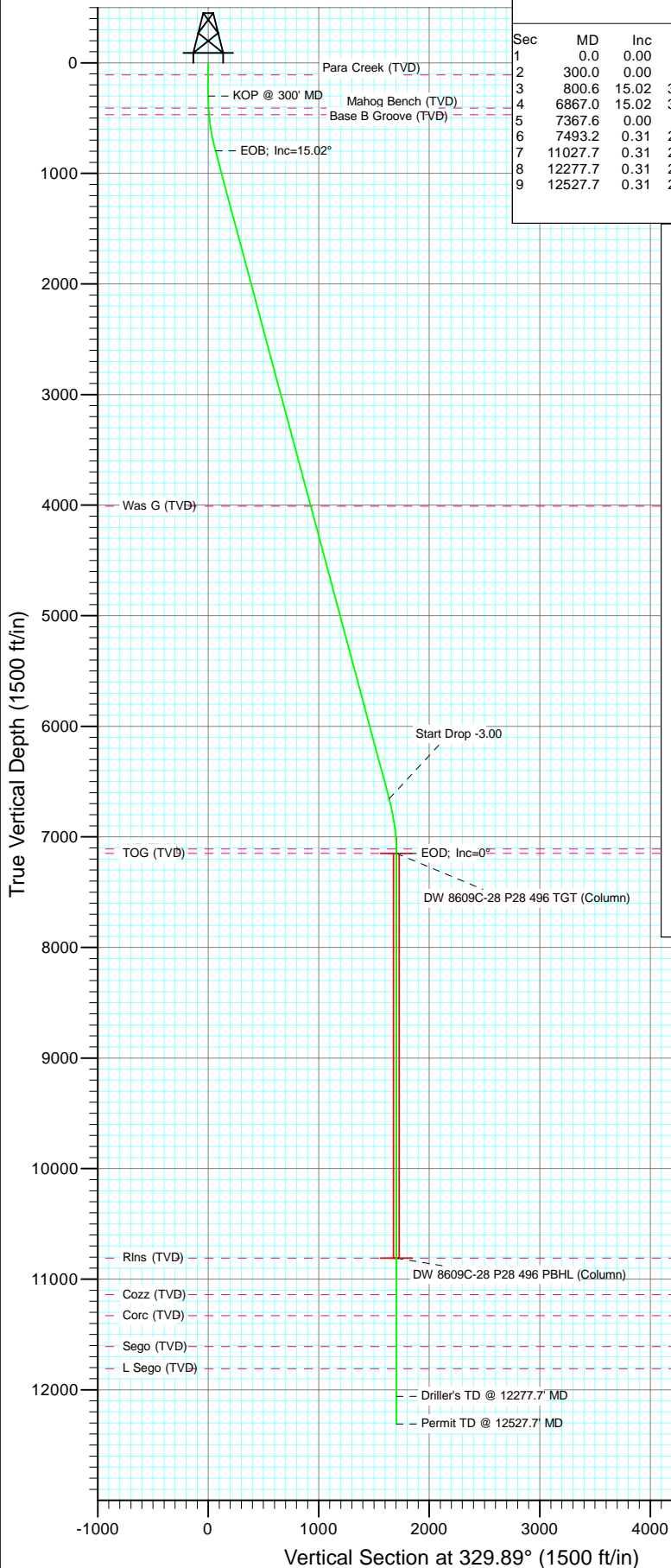
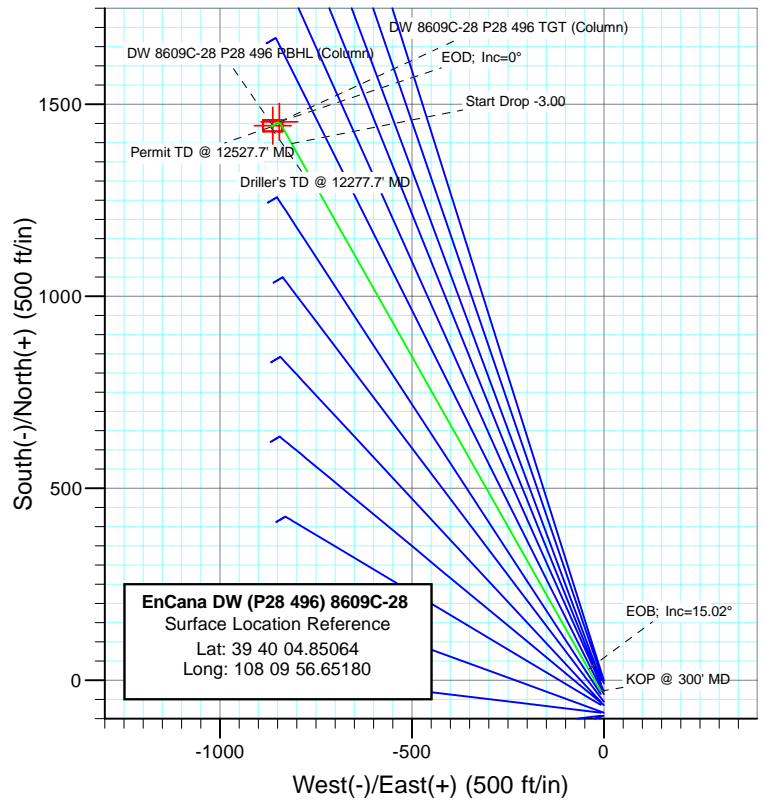




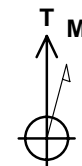
Project: Double Willow
Site: S28-T4S-R96W (P28 496)(column pattern)
Well: DW 8609C-28 (P28 496)
Wellbore: DD
Design: Plan #1



SECTION DETAILS										
Sec	MD	Inc	Azi	TVD	+N/-S	+E/-W	Dleg	TFace	VSect	Target
1	0.0	0.00	0.00	0.0	-28.0	-8.1	0.00	0.00	0.0	
2	300.0	0.00	0.00	300.0	-28.0	-8.1	0.00	0.00	0.0	
3	800.6	15.02	330.55	794.9	28.8	-40.2	3.00	330.55	65.2	
4	6867.0	15.02	330.55	6654.1	1397.6	-813.1	0.00	0.00	1637.0	
5	7367.6	0.00	0.00	7149.0	1454.4	-845.1	3.00	180.00	1702.3	DW 8609C-28 P28 496 TGT (Column)
6	7493.2	0.31	239.35	7274.6	1454.2	-845.4	0.25	239.35	1702.3	
7	11027.7	0.31	239.35	10809.0	1444.4	-862.1	0.00	0.00	1702.1	DW 8609C-28 P28 496 PBHL (Column)
8	12277.7	0.31	239.35	12059.0	1440.9	-868.0	0.00	0.00	1702.0	
9	12527.7	0.31	239.35	12309.0	1440.2	-869.2	0.00	0.00	1702.0	



FORMATION TOP DETAILS		
TVDPath	MDPath	Formation
109.0	109.0	Para Creek (TVD)
409.0	409.1	Mahog Bench (TVD)
469.0	469.2	Base B Groove (TVD)
4009.0	4128.4	Was G (TVD)
7109.0	7327.6	WF (TVD)
7149.0	7367.6	TOG (TVD)
10809.0	11027.7	Rlns (TVD)
11139.0	11357.7	Cozz (TVD)
11329.0	11547.7	Corc (TVD)
11609.0	11827.7	Sego (TVD)
11809.0	12027.7	L Sego (TVD)



Azimuths to True North
Magnetic North: 10.52°

Magnetic Field
Strength: 52361.0snT
Dip Angle: 65.86°
Date: 12/1/2010
Model: IGRF2010

Plan #1						
DW 8609C-28 (P28 496)						
WELL @ 7804.0ft (Original Well Elev)						
North American Datum 1983						
Site S28-T4S-R96W (P28 496)(column pattern), True North						
Type	Target	Azimuth	Origin	Type	N/S	E/W From TVD
Target	DW 8609C-28 P28 496 PBHL (Column)	329.89	Slot		-28.0	-8.1
						0.0
Name		TVD	+N/-S	+E/-W	Latitude	Longitude
DW 8609C-28 P28 496 TGT (Column)		7149.0	1454.4	-845.139° 40'	19.50 N	108° 10' 7.36 W
DW 8609C-28 P28 496 PBHL (Column)		10809.0	1444.4	-862.139° 40'	19.40 N	108° 10' 7.57 W

Cathedral Energy Services

Planning Report

Database:	EDM 5000.1 US Multi Users DB	Local Co-ordinate Reference:	Site S28-T4S-R96W (P28 496)(column pattern)
Company:	EnCana Oil & Gas (USA) Inc	TVD Reference:	WELL @ 7804.0ft (Original Well Elev)
Project:	Double Willow	MD Reference:	WELL @ 7804.0ft (Original Well Elev)
Site:	S28-T4S-R96W (P28 496)(column pattern)	North Reference:	True
Well:	DW 8609C-28 (P28 496)	Survey Calculation Method:	Minimum Curvature
Wellbore:	DD		
Design:	Plan #1		

Project	Double Willow		
Map System:	US State Plane 1983	System Datum:	Mean Sea Level
Geo Datum:	North American Datum 1983		
Map Zone:	Colorado Central Zone		

Site	S28-T4S-R96W (P28 496)(column pattern)			
Site Position:		Northing:	1,679,243.29 ft	Latitude: 39° 40' 5.13 N
From:	Lat/Long	Easting:	2,249,687.54 ft	Longitude: 108° 9' 56.55 W
Position Uncertainty:	0.0 ft	Slot Radius:	13.200 in	Grid Convergence: -1.68 °

Well	DW 8609C-28 (P28 496)			
Well Position	+N/-S	-28.0 ft	Northing:	1,679,215.54 ft
	+E/-W	-8.1 ft	Easting:	2,249,678.60 ft
Position Uncertainty		0.0 ft	Wellhead Elevation:	ft
			Ground Level:	7,771.0 ft

Wellbore	DD				
Magnetics	Model Name	Sample Date	Declination (°)	Dip Angle (°)	Field Strength (nT)
	IGRF2010	12/1/2010	10.52	65.86	52,361

Design	Plan #1			
Audit Notes:				
Version:	Phase:	PLAN	Tie On Depth:	0.0
Vertical Section:	Depth From (TVD) (ft)	+N/-S (ft)	+E/-W (ft)	Direction (°)
	0.0	-28.0	-8.1	329.89

Plan Sections										
Measured Depth (ft)	Inclination (°)	Azimuth (°)	Vertical Depth (ft)	+N/-S (ft)	+E/-W (ft)	Dogleg Rate (°/100ft)	Build Rate (°/100ft)	Turn Rate (°/100ft)	TFO (°)	Target
0.0	0.00	0.00	0.0	-28.0	-8.1	0.00	0.00	0.00	0.00	
300.0	0.00	0.00	300.0	-28.0	-8.1	0.00	0.00	0.00	0.00	
800.6	15.02	330.55	794.9	28.8	-40.2	3.00	3.00	0.00	330.55	
6,867.0	15.02	330.55	6,654.1	1,397.6	-813.1	0.00	0.00	0.00	0.00	
7,367.6	0.00	0.00	7,149.0	1,454.4	-845.1	3.00	-3.00	0.00	180.00	DW 8609C-28 P28 496
7,493.2	0.31	239.35	7,274.6	1,454.2	-845.4	0.25	0.25	-96.08	239.35	
11,027.7	0.31	239.35	10,809.0	1,444.4	-862.1	0.00	0.00	0.00	0.00	DW 8609C-28 P28 496
12,277.7	0.31	239.35	12,059.0	1,440.9	-868.0	0.00	0.00	0.00	0.00	
12,527.7	0.31	239.35	12,309.0	1,440.2	-869.2	0.00	0.00	0.00	0.00	

Cathedral Energy Services

Planning Report

Database:	EDM 5000.1 US Multi Users DB	Local Co-ordinate Reference:	Site S28-T4S-R96W (P28 496)(column pattern)
Company:	EnCana Oil & Gas (USA) Inc	TVD Reference:	WELL @ 7804.0ft (Original Well Elev)
Project:	Double Willow	MD Reference:	WELL @ 7804.0ft (Original Well Elev)
Site:	S28-T4S-R96W (P28 496)(column pattern)	North Reference:	True
Well:	DW 8609C-28 (P28 496)	Survey Calculation Method:	Minimum Curvature
Wellbore:	DD		
Design:	Plan #1		

Planned Survey

Measured Depth (ft)	Inclination (°)	Azimuth (°)	Vertical Depth (ft)	+N/-S (ft)	+E/-W (ft)	Vertical Section (ft)	Dogleg Rate (°/100ft)	Build Rate (°/100ft)	Comments / Formations
0.0	0.00	0.00	0.0	-28.0	-8.1	0.0	0.00	0.00	
100.0	0.00	0.00	100.0	-28.0	-8.1	0.0	0.00	0.00	
109.0	0.00	0.00	109.0	-28.0	-8.1	0.0	0.00	0.00	Para Creek (TVD)
200.0	0.00	0.00	200.0	-28.0	-8.1	0.0	0.00	0.00	
300.0	0.00	0.00	300.0	-28.0	-8.1	0.0	0.00	0.00	KOP @ 300' MD
400.0	3.00	330.55	400.0	-25.7	-9.4	2.6	3.00	3.00	
409.1	3.27	330.55	409.0	-25.3	-9.7	3.1	3.00	3.00	Mahog Bench (TVD)
469.2	5.08	330.55	469.0	-21.5	-11.8	7.5	3.00	3.00	Base B Groove (TVD)
500.0	6.00	330.55	499.6	-18.9	-13.3	10.5	3.00	3.00	
600.0	9.00	330.55	598.8	-7.5	-19.7	23.5	3.00	3.00	
700.0	12.00	330.55	697.1	8.3	-28.6	41.7	3.00	3.00	
800.0	15.00	330.55	794.3	28.7	-40.1	65.1	3.00	3.00	
800.6	15.02	330.55	794.9	28.8	-40.2	65.2	3.00	3.00	EOB; Inc=15.02°
900.0	15.02	330.55	890.9	51.2	-52.9	91.0	0.00	0.00	
1,000.0	15.02	330.55	987.5	73.8	-65.6	116.9	0.00	0.00	
1,100.0	15.02	330.55	1,084.1	96.4	-78.3	142.8	0.00	0.00	
1,200.0	15.02	330.55	1,180.6	118.9	-91.1	168.7	0.00	0.00	
1,300.0	15.02	330.55	1,277.2	141.5	-103.8	194.6	0.00	0.00	
1,400.0	15.02	330.55	1,373.8	164.0	-116.6	220.5	0.00	0.00	
1,500.0	15.02	330.55	1,470.4	186.6	-129.3	246.4	0.00	0.00	
1,600.0	15.02	330.55	1,567.0	209.2	-142.0	272.4	0.00	0.00	
1,700.0	15.02	330.55	1,663.6	231.7	-154.8	298.3	0.00	0.00	
1,800.0	15.02	330.55	1,760.2	254.3	-167.5	324.2	0.00	0.00	
1,900.0	15.02	330.55	1,856.7	276.9	-180.3	350.1	0.00	0.00	
2,000.0	15.02	330.55	1,953.3	299.4	-193.0	376.0	0.00	0.00	
2,100.0	15.02	330.55	2,049.9	322.0	-205.7	401.9	0.00	0.00	
2,200.0	15.02	330.55	2,146.5	344.6	-218.5	427.8	0.00	0.00	
2,300.0	15.02	330.55	2,243.1	367.1	-231.2	453.7	0.00	0.00	
2,400.0	15.02	330.55	2,339.7	389.7	-244.0	479.6	0.00	0.00	
2,500.0	15.02	330.55	2,436.2	412.2	-256.7	505.5	0.00	0.00	
2,600.0	15.02	330.55	2,532.8	434.8	-269.4	531.5	0.00	0.00	
2,700.0	15.02	330.55	2,629.4	457.4	-282.2	557.4	0.00	0.00	
2,800.0	15.02	330.55	2,726.0	479.9	-294.9	583.3	0.00	0.00	
2,900.0	15.02	330.55	2,822.6	502.5	-307.7	609.2	0.00	0.00	
3,000.0	15.02	330.55	2,919.2	525.1	-320.4	635.1	0.00	0.00	
3,100.0	15.02	330.55	3,015.8	547.6	-333.1	661.0	0.00	0.00	
3,200.0	15.02	330.55	3,112.3	570.2	-345.9	686.9	0.00	0.00	
3,300.0	15.02	330.55	3,208.9	592.8	-358.6	712.8	0.00	0.00	
3,400.0	15.02	330.55	3,305.5	615.3	-371.4	738.7	0.00	0.00	
3,500.0	15.02	330.55	3,402.1	637.9	-384.1	764.6	0.00	0.00	
3,600.0	15.02	330.55	3,498.7	660.4	-396.8	790.6	0.00	0.00	
3,700.0	15.02	330.55	3,595.3	683.0	-409.6	816.5	0.00	0.00	
3,800.0	15.02	330.55	3,691.8	705.6	-422.3	842.4	0.00	0.00	
3,900.0	15.02	330.55	3,788.4	728.1	-435.1	868.3	0.00	0.00	
4,000.0	15.02	330.55	3,885.0	750.7	-447.8	894.2	0.00	0.00	
4,100.0	15.02	330.55	3,981.6	773.3	-460.5	920.1	0.00	0.00	
4,128.4	15.02	330.55	4,009.0	779.7	-464.2	927.5	0.00	0.00	Was G (TVD)
4,200.0	15.02	330.55	4,078.2	795.8	-473.3	946.0	0.00	0.00	
4,300.0	15.02	330.55	4,174.8	818.4	-486.0	971.9	0.00	0.00	
4,400.0	15.02	330.55	4,271.4	841.0	-498.8	997.8	0.00	0.00	
4,500.0	15.02	330.55	4,367.9	863.5	-511.5	1,023.7	0.00	0.00	
4,600.0	15.02	330.55	4,464.5	886.1	-524.2	1,049.7	0.00	0.00	

Cathedral Energy Services

Planning Report

Database:	EDM 5000.1 US Multi Users DB	Local Co-ordinate Reference:	Site S28-T4S-R96W (P28 496)(column pattern)
Company:	EnCana Oil & Gas (USA) Inc	TVD Reference:	WELL @ 7804.0ft (Original Well Elev)
Project:	Double Willow	MD Reference:	WELL @ 7804.0ft (Original Well Elev)
Site:	S28-T4S-R96W (P28 496)(column pattern)	North Reference:	True
Well:	DW 8609C-28 (P28 496)	Survey Calculation Method:	Minimum Curvature
Wellbore:	DD		
Design:	Plan #1		

Planned Survey									
Measured Depth (ft)	Inclination (°)	Azimuth (°)	Vertical Depth (ft)	+N/-S (ft)	+E/-W (ft)	Vertical Section (ft)	Dogleg Rate (°/100ft)	Build Rate (°/100ft)	Comments / Formations
4,700.0	15.02	330.55	4,561.1	908.6	-537.0	1,075.6	0.00	0.00	
4,800.0	15.02	330.55	4,657.7	931.2	-549.7	1,101.5	0.00	0.00	
4,900.0	15.02	330.55	4,754.3	953.8	-562.5	1,127.4	0.00	0.00	
5,000.0	15.02	330.55	4,850.9	976.3	-575.2	1,153.3	0.00	0.00	
5,100.0	15.02	330.55	4,947.4	998.9	-587.9	1,179.2	0.00	0.00	
5,200.0	15.02	330.55	5,044.0	1,021.5	-600.7	1,205.1	0.00	0.00	
5,300.0	15.02	330.55	5,140.6	1,044.0	-613.4	1,231.0	0.00	0.00	
5,400.0	15.02	330.55	5,237.2	1,066.6	-626.2	1,256.9	0.00	0.00	
5,500.0	15.02	330.55	5,333.8	1,089.2	-638.9	1,282.8	0.00	0.00	
5,600.0	15.02	330.55	5,430.4	1,111.7	-651.6	1,308.8	0.00	0.00	
5,700.0	15.02	330.55	5,527.0	1,134.3	-664.4	1,334.7	0.00	0.00	
5,800.0	15.02	330.55	5,623.5	1,156.8	-677.1	1,360.6	0.00	0.00	
5,900.0	15.02	330.55	5,720.1	1,179.4	-689.9	1,386.5	0.00	0.00	
6,000.0	15.02	330.55	5,816.7	1,202.0	-702.6	1,412.4	0.00	0.00	
6,100.0	15.02	330.55	5,913.3	1,224.5	-715.3	1,438.3	0.00	0.00	
6,200.0	15.02	330.55	6,009.9	1,247.1	-728.1	1,464.2	0.00	0.00	
6,300.0	15.02	330.55	6,106.5	1,269.7	-740.8	1,490.1	0.00	0.00	
6,400.0	15.02	330.55	6,203.0	1,292.2	-753.6	1,516.0	0.00	0.00	
6,500.0	15.02	330.55	6,299.6	1,314.8	-766.3	1,541.9	0.00	0.00	
6,600.0	15.02	330.55	6,396.2	1,337.4	-779.0	1,567.9	0.00	0.00	
6,700.0	15.02	330.55	6,492.8	1,359.9	-791.8	1,593.8	0.00	0.00	
6,800.0	15.02	330.55	6,589.4	1,382.5	-804.5	1,619.7	0.00	0.00	
6,867.0	15.02	330.55	6,654.1	1,397.6	-813.1	1,637.0	0.00	0.00	Start Drop -3.00
6,900.0	14.03	330.55	6,686.0	1,404.8	-817.1	1,645.3	3.00	-3.00	
7,000.0	11.03	330.55	6,783.6	1,423.7	-827.8	1,667.0	3.00	-3.00	
7,100.0	8.03	330.55	6,882.3	1,438.1	-835.9	1,683.5	3.00	-3.00	
7,200.0	5.03	330.55	6,981.6	1,448.0	-841.5	1,694.9	3.00	-3.00	
7,300.0	2.03	330.55	7,081.4	1,453.4	-844.5	1,701.1	3.00	-3.00	
7,327.6	1.20	330.55	7,109.0	1,454.0	-844.9	1,701.8	3.00	-3.00	WF (TVD)
7,367.6	0.00	0.00	7,149.0	1,454.4	-845.1	1,702.3	3.00	-3.00	EOD; Inc=0° - TOG (TVD) - DW 8609C-28 P28
7,400.0	0.08	239.35	7,181.4	1,454.4	-845.1	1,702.3	0.25	0.25	
7,493.2	0.31	239.35	7,274.6	1,454.2	-845.4	1,702.3	0.25	0.25	
7,500.0	0.31	239.35	7,281.4	1,454.2	-845.5	1,702.3	0.00	0.00	
7,600.0	0.31	239.35	7,381.4	1,453.9	-845.9	1,702.3	0.00	0.00	
7,700.0	0.31	239.35	7,481.4	1,453.7	-846.4	1,702.3	0.00	0.00	
7,800.0	0.31	239.35	7,581.4	1,453.4	-846.9	1,702.2	0.00	0.00	
7,900.0	0.31	239.35	7,681.4	1,453.1	-847.3	1,702.2	0.00	0.00	
8,000.0	0.31	239.35	7,781.4	1,452.8	-847.8	1,702.2	0.00	0.00	
8,100.0	0.31	239.35	7,881.4	1,452.5	-848.3	1,702.2	0.00	0.00	
8,200.0	0.31	239.35	7,981.4	1,452.3	-848.8	1,702.2	0.00	0.00	
8,300.0	0.31	239.35	8,081.4	1,452.0	-849.2	1,702.2	0.00	0.00	
8,400.0	0.31	239.35	8,181.4	1,451.7	-849.7	1,702.2	0.00	0.00	
8,500.0	0.31	239.35	8,281.4	1,451.4	-850.2	1,702.2	0.00	0.00	
8,600.0	0.31	239.35	8,381.4	1,451.1	-850.6	1,702.2	0.00	0.00	
8,700.0	0.31	239.35	8,481.4	1,450.9	-851.1	1,702.2	0.00	0.00	
8,800.0	0.31	239.35	8,581.4	1,450.6	-851.6	1,702.2	0.00	0.00	
8,900.0	0.31	239.35	8,681.4	1,450.3	-852.1	1,702.2	0.00	0.00	
9,000.0	0.31	239.35	8,781.4	1,450.0	-852.5	1,702.2	0.00	0.00	
9,100.0	0.31	239.35	8,881.4	1,449.7	-853.0	1,702.2	0.00	0.00	
9,200.0	0.31	239.35	8,981.4	1,449.5	-853.5	1,702.2	0.00	0.00	
9,300.0	0.31	239.35	9,081.4	1,449.2	-853.9	1,702.2	0.00	0.00	
9,400.0	0.31	239.35	9,181.4	1,448.9	-854.4	1,702.2	0.00	0.00	

Cathedral Energy Services

Planning Report

Database:	EDM 5000.1 US Multi Users DB	Local Co-ordinate Reference:	Site S28-T4S-R96W (P28 496)(column pattern)
Company:	EnCana Oil & Gas (USA) Inc	TVD Reference:	WELL @ 7804.0ft (Original Well Elev)
Project:	Double Willow	MD Reference:	WELL @ 7804.0ft (Original Well Elev)
Site:	S28-T4S-R96W (P28 496)(column pattern)	North Reference:	True
Well:	DW 8609C-28 (P28 496)	Survey Calculation Method:	Minimum Curvature
Wellbore:	DD		
Design:	Plan #1		

Planned Survey

Measured Depth (ft)	Inclination (°)	Azimuth (°)	Vertical Depth (ft)	+N/-S (ft)	+E/-W (ft)	Vertical Section (ft)	Dogleg Rate (°/100ft)	Build Rate (°/100ft)	Comments / Formations
9,500.0	0.31	239.35	9,281.3	1,448.6	-854.9	1,702.2	0.00	0.00	
9,600.0	0.31	239.35	9,381.3	1,448.3	-855.4	1,702.2	0.00	0.00	
9,700.0	0.31	239.35	9,481.3	1,448.1	-855.8	1,702.2	0.00	0.00	
9,800.0	0.31	239.35	9,581.3	1,447.8	-856.3	1,702.1	0.00	0.00	
9,900.0	0.31	239.35	9,681.3	1,447.5	-856.8	1,702.1	0.00	0.00	
10,000.0	0.31	239.35	9,781.3	1,447.2	-857.2	1,702.1	0.00	0.00	
10,100.0	0.31	239.35	9,881.3	1,446.9	-857.7	1,702.1	0.00	0.00	
10,200.0	0.31	239.35	9,981.3	1,446.7	-858.2	1,702.1	0.00	0.00	
10,300.0	0.31	239.35	10,081.3	1,446.4	-858.7	1,702.1	0.00	0.00	
10,400.0	0.31	239.35	10,181.3	1,446.1	-859.1	1,702.1	0.00	0.00	
10,500.0	0.31	239.35	10,281.3	1,445.8	-859.6	1,702.1	0.00	0.00	
10,600.0	0.31	239.35	10,381.3	1,445.6	-860.1	1,702.1	0.00	0.00	
10,700.0	0.31	239.35	10,481.3	1,445.3	-860.5	1,702.1	0.00	0.00	
10,800.0	0.31	239.35	10,581.3	1,445.0	-861.0	1,702.1	0.00	0.00	
10,900.0	0.31	239.35	10,681.3	1,444.7	-861.5	1,702.1	0.00	0.00	
11,000.0	0.31	239.35	10,781.3	1,444.4	-862.0	1,702.1	0.00	0.00	
11,027.7	0.31	239.35	10,809.0	1,444.4	-862.1	1,702.1	0.00	0.00	Rins (TVD) - DW 8609C-28 P28 496 PBHL (Co
11,100.0	0.31	239.35	10,881.3	1,444.2	-862.4	1,702.1	0.00	0.00	
11,200.0	0.31	239.35	10,981.3	1,443.9	-862.9	1,702.1	0.00	0.00	
11,300.0	0.31	239.35	11,081.3	1,443.6	-863.4	1,702.1	0.00	0.00	
11,357.7	0.31	239.35	11,139.0	1,443.4	-863.6	1,702.1	0.00	0.00	Cozz (TVD)
11,400.0	0.31	239.35	11,181.3	1,443.3	-863.8	1,702.1	0.00	0.00	
11,500.0	0.31	239.35	11,281.3	1,443.0	-864.3	1,702.1	0.00	0.00	
11,547.7	0.31	239.35	11,329.0	1,442.9	-864.5	1,702.1	0.00	0.00	Corc (TVD)
11,600.0	0.31	239.35	11,381.3	1,442.8	-864.8	1,702.1	0.00	0.00	
11,700.0	0.31	239.35	11,481.3	1,442.5	-865.3	1,702.0	0.00	0.00	
11,800.0	0.31	239.35	11,581.3	1,442.2	-865.7	1,702.0	0.00	0.00	
11,827.7	0.31	239.35	11,609.0	1,442.1	-865.9	1,702.0	0.00	0.00	Sego (TVD)
11,900.0	0.31	239.35	11,681.3	1,441.9	-866.2	1,702.0	0.00	0.00	
12,000.0	0.31	239.35	11,781.3	1,441.6	-866.7	1,702.0	0.00	0.00	
12,027.7	0.31	239.35	11,809.0	1,441.6	-866.8	1,702.0	0.00	0.00	L Sego (TVD)
12,100.0	0.31	239.35	11,881.3	1,441.4	-867.1	1,702.0	0.00	0.00	
12,200.0	0.31	239.35	11,981.3	1,441.1	-867.6	1,702.0	0.00	0.00	
12,277.7	0.31	239.35	12,059.0	1,440.9	-868.0	1,702.0	0.00	0.00	Driller's TD @ 12277.7' MD
12,300.0	0.31	239.35	12,081.3	1,440.8	-868.1	1,702.0	0.00	0.00	
12,400.0	0.31	239.35	12,181.3	1,440.5	-868.5	1,702.0	0.00	0.00	
12,500.0	0.31	239.35	12,281.3	1,440.2	-869.0	1,702.0	0.00	0.00	
12,527.7	0.31	239.35	12,309.0	1,440.2	-869.2	1,702.0	0.00	0.00	

Targets

Target Name - hit/miss target - Shape	Dip Angle (°)	Dip Dir. (°)	TVD (ft)	+N/-S (ft)	+E/-W (ft)	Northing (ft)	Easting (ft)	Latitude	Longitude
DW 8609C-28 P28 496 I - plan hits target center - Rectangle (sides W30.0 H50.0 D0.0)	0.00	0.00	10,809.0	1,444.4	-862.1	1,680,712.32	2,248,868.21	39° 40' 19.40 N	108° 10' 7.57 W
DW 8609C-28 P28 496 ` - plan hits target center - Point	0.00	0.00	7,149.0	1,454.4	-845.1	1,680,721.87	2,248,885.45	39° 40' 19.50 N	108° 10' 7.36 W

Cathedral Energy Services

Planning Report

Database:	EDM 5000.1 US Multi Users DB	Local Co-ordinate Reference:	Site S28-T4S-R96W (P28 496)(column pattern)
Company:	EnCana Oil & Gas (USA) Inc	TVD Reference:	WELL @ 7804.0ft (Original Well Elev)
Project:	Double Willow	MD Reference:	WELL @ 7804.0ft (Original Well Elev)
Site:	S28-T4S-R96W (P28 496)(column pattern)	North Reference:	True
Well:	DW 8609C-28 (P28 496)	Survey Calculation Method:	Minimum Curvature
Wellbore:	DD		
Design:	Plan #1		

Formations						
Measured Depth (ft)	Vertical Depth (ft)	Name	Lithology	Dip (°)	Dip Direction (°)	
109.0	109.0	Para Creek (TVD)				
409.1	409.0	Mahog Bench (TVD)				
469.2	469.0	Base B Groove (TVD)				
4,128.4	4,009.0	Was G (TVD)				
7,327.6	7,109.0	WF (TVD)				
7,367.6	7,149.0	TOG (TVD)				
11,027.7	10,809.0	Rlns (TVD)				
11,357.7	11,139.0	Cozz (TVD)				
11,547.7	11,329.0	Corc (TVD)				
11,827.7	11,609.0	Sego (TVD)				
12,027.7	11,809.0	L Sego (TVD)				

Plan Annotations					
Measured Depth (ft)	Vertical Depth (ft)	Local Coordinates			
		+N/-S (ft)	+E/-W (ft)	Comment	
300.0	300.0	-28.0	-8.1	KOP @ 300' MD	
800.6	794.9	28.8	-40.2	EOB; Inc=15.02°	
6,867.0	6,654.1	1,397.6	-813.1	Start Drop -3.00	
7,367.6	7,149.0	1,454.4	-845.1	EOD; Inc=0°	
12,277.7	12,059.0	1,440.9	-868.0	Driller's TD @ 12277.7' MD	
12,527.7	12,309.0	1,440.2	-869.2	Permit TD @ 12527.7' MD	