

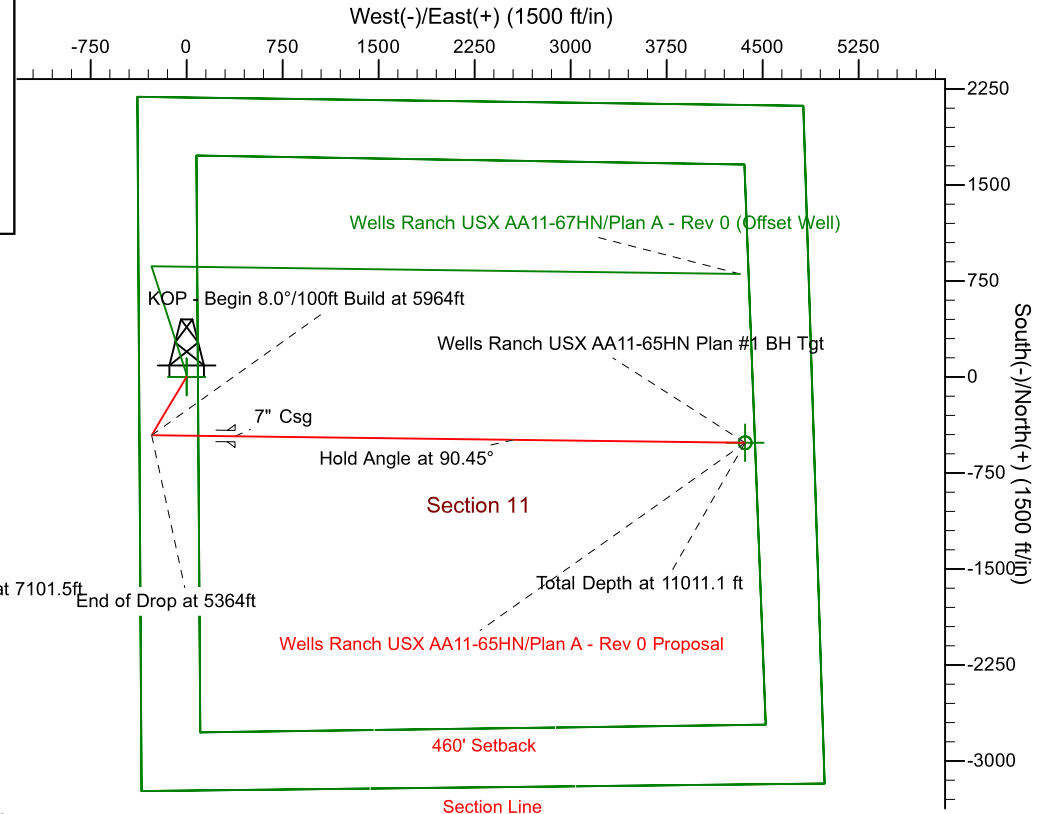
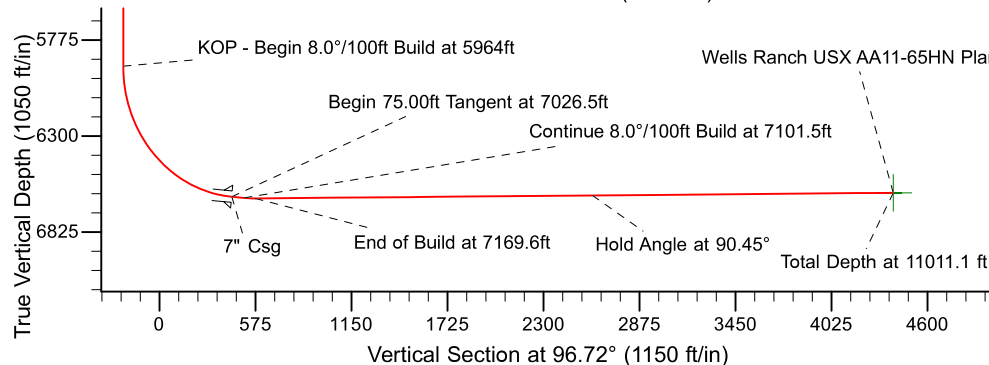
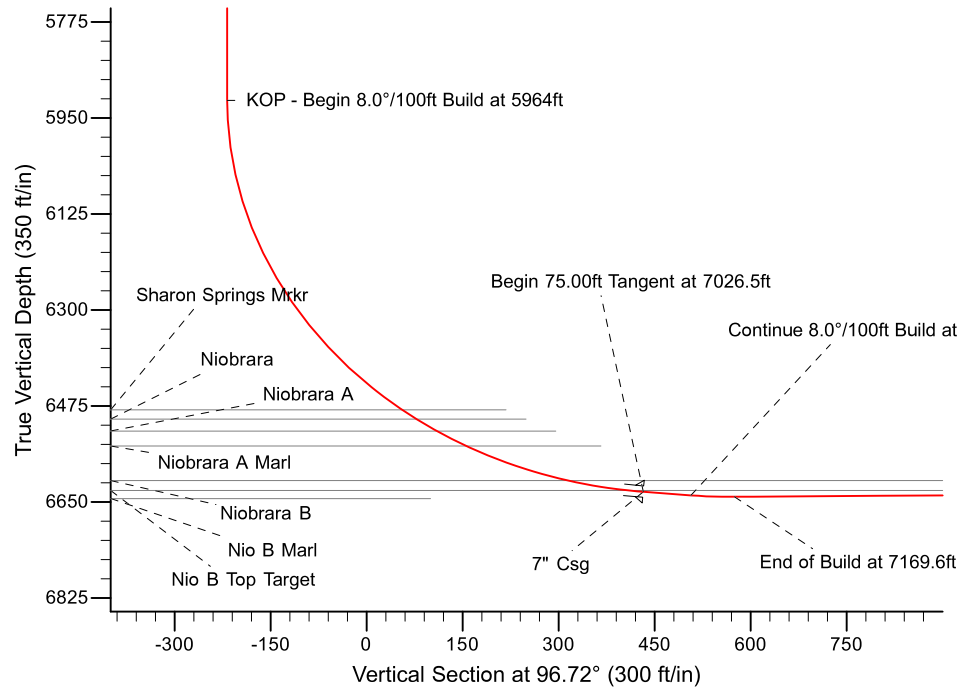
Project: Weld County, CO (NAD 83)
 Site: Sec. 11, T6N, R63W
 Well: Wells Ranch USX AA11-65HN
 Wellbore: Plan A - Rev 0 (PERMITTING PLAN ONLY)
 Design: Plan A - Rev 0 Proposal

Noble Energy

HALLIBURTON
 Sperry Drilling

SECTION DETAILS

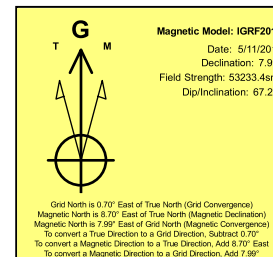
Sec	MD	Inc	Azi	TVD	+N/-S	+E/-W	Dleg	TFace	Vsect	Target
1	0.0	0.00	0.00	0.0	0.0	0.0	0.00	0.00	0.0	
2	2000.0	0.00	0.00	2000.0	0.0	0.0	0.00	0.00	0.0	
3	2415.2	10.38	210.91	2412.9	-32.2	-19.3	2.50	210.91	-15.4	
4	4948.8	10.38	210.91	4905.1	-423.8	-253.7	0.00	0.00	-202.4	
5	5364.0	0.00	0.00	5318.0	-456.0	-273.0	2.50	180.00	-217.7	
6	5964.0	0.00	0.00	5918.0	-456.0	-273.0	0.00	0.00	-217.7	
7	7026.5	85.00	90.72	6631.5	-464.2	380.7	8.00	90.72	432.4	
8	7101.5	85.00	90.72	6638.0	-465.2	455.4	0.00	0.00	506.8	
9	7169.6	90.45	90.72	6640.7	-466.0	523.5	8.00	0.00	574.4	
10	10111.1	90.45	90.72	6610.5	-514.4	4364.5	0.00	67.51	4394.8	Wells Ranch USX AA11-65HN Plan #1 BH Tgt



Surface: 2,184' FNL, 373' FWL

BHL: 2640' FNL, 535' FEL

Casing Pt: 2648.2' FNL, 753.7' FWL



WELL DETAILS: Wells Ranch USX AA11-65HN (NAD83 Geodetic System)			
Ground Level: 4781.0			
Northing	Easting	Latitude	Longitude
435207.99	1006621.69	40° 30' 9.864 N	104° 24' 43.128 W
Plan A - Rev 0 Proposal (Wells Ranch USX AA11-65HN/Plan A - Rev 0 (PERMITTING PLAN ONLY))			
Created By: Jose Patino		Date: 14:52, May 11 2011	
OK to submit with 2A as per Noble Drilling			
5/11/2011 14:16			