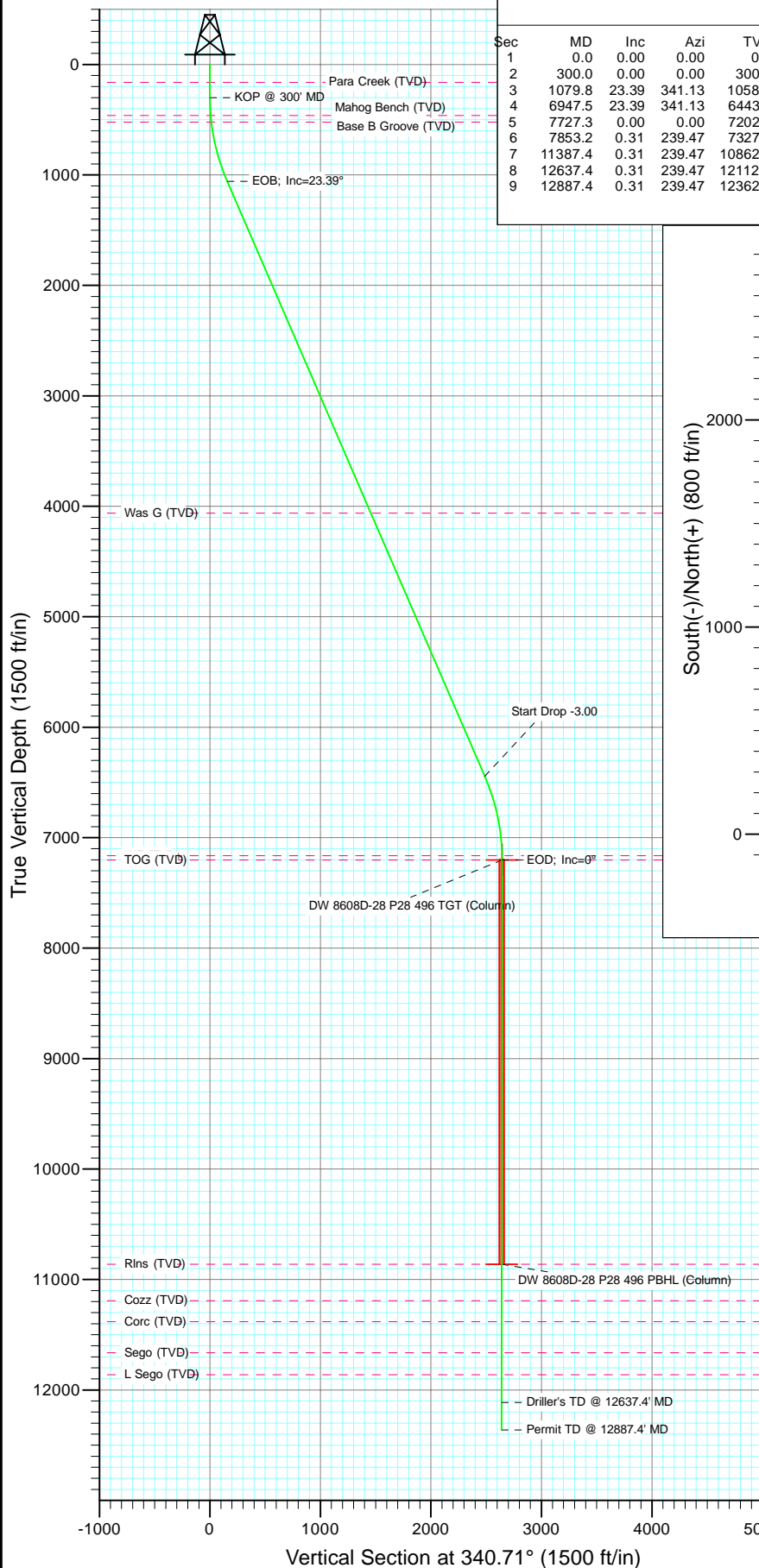
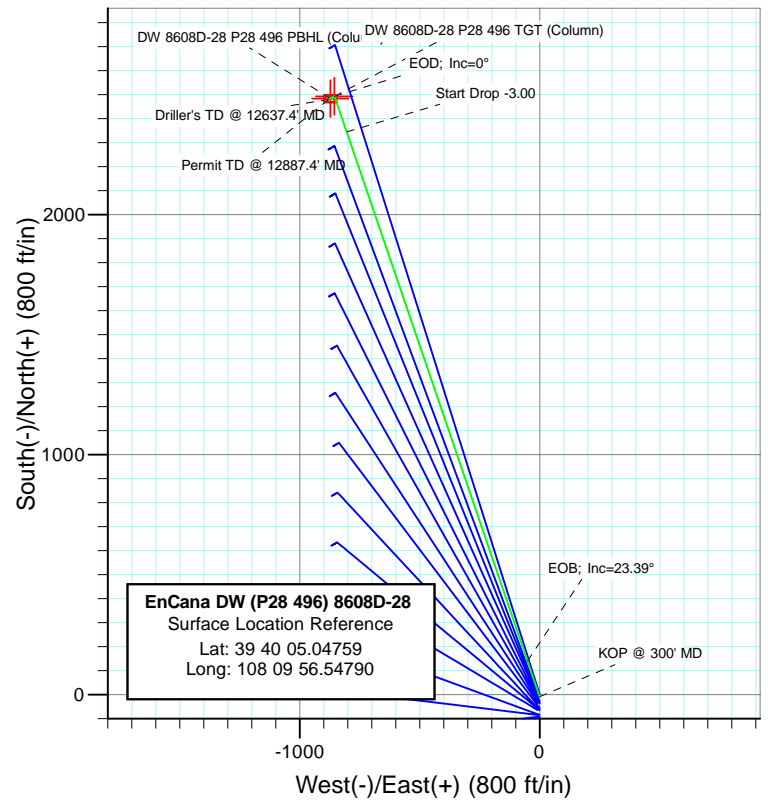




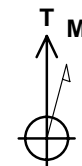
Project: Double Willow  
Site: S28-T4S-R96W (P28 496)(column pattern)  
Well: DW 8608D-28 (P28 496)  
Wellbore: DD  
Design: Plan #1



SECTION DETAILS										
Sec	MD	Inc	Azi	TVD	+N/-S	+E/-W	Dleg	TFace	V Sect	Target
1	0.0	0.00	0.00	0.0	-8.1	0.0	0.00	0.00	0.0	
2	300.0	0.00	0.00	300.0	-8.1	0.0	0.00	0.00	0.0	
3	1079.8	23.39	341.13	1058.3	140.5	-50.8	3.00	341.13	157.0	
4	6947.5	23.39	341.13	6443.7	2345.0	-804.4	0.00	0.00	2486.7	DW 8608D-28 P28 496 TGT (Column)
5	7727.3	0.00	0.00	7202.0	2493.5	-855.2	3.00	180.00	2643.7	
6	7853.2	0.31	239.47	7327.9	2493.4	-855.5	0.25	239.47	2643.6	DW 8608D-28 P28 496 PBHL (Column)
7	11387.4	0.31	239.47	10862.0	2483.5	-872.2	0.00	0.00	2639.8	
8	12637.4	0.31	239.47	12112.0	2480.0	-878.1	0.00	0.00	2638.5	
9	12887.4	0.31	239.47	12362.0	2479.3	-879.3	0.00	0.00	2638.2	



FORMATION TOP DETAILS		
TVDPath	MDPath	Formation
162.0	162.0	Para Creek (TVD)
462.0	462.2	Mahog Bench (TVD)
522.0	522.5	Base B Groove (TVD)
4062.0	4352.5	Was G (TVD)
7162.0	7687.3	WF (TVD)
7202.0	7727.3	TOG (TVD)
10862.0	11387.4	Rins (TVD)
11192.0	11717.4	Cozz (TVD)
11382.0	11907.4	Corc (TVD)
11662.0	12187.4	Sego (TVD)
11862.0	12387.4	L Sego (TVD)



Azimuths to True North  
Magnetic North: 10.52°  
Magnetic Field  
Strength: 52361.0snT  
Dip Angle: 65.86°  
Date: 12/1/2010  
Model: IGRF2010

Plan #1						
DW 8608D-28 (P28 496)						
WELL @ 7804.0ft (Original Well Elev)						
North American Datum 1983						
Site S28-T4S-R96W (P28 496)(column pattern), True North						
Type	Target	Azimuth	Origin	Type	N/S	E/W
Target	DW 8608D-28 P28 496 PBHL (Column)	340.71	Slot		-8.1	0.0
Name	TVD	+N/-S	+E/-W	Latitude	Longitude	
DW 8608D-28 P28 496 TGT (Column)	7202.0	2493.5	-855.239° 40'	29.77 N	108° 10' 7.49 W	
DW 8608D-28 P28 496 PBHL (Column)	10862.0	2483.5	-872.239° 40'	29.67 N	108° 10' 7.70 W	

# Cathedral Energy Services

## Planning Report

<b>Database:</b>	EDM 5000.1 US Multi Users DB	<b>Local Co-ordinate Reference:</b>	Site S28-T4S-R96W (P28 496)(column pattern)
<b>Company:</b>	EnCana Oil & Gas (USA) Inc	<b>TVD Reference:</b>	WELL @ 7804.0ft (Original Well Elev)
<b>Project:</b>	Double Willow	<b>MD Reference:</b>	WELL @ 7804.0ft (Original Well Elev)
<b>Site:</b>	S28-T4S-R96W (P28 496)(column pattern)	<b>North Reference:</b>	True
<b>Well:</b>	DW 8608D-28 (P28 496)	<b>Survey Calculation Method:</b>	Minimum Curvature
<b>Wellbore:</b>	DD		
<b>Design:</b>	Plan #1		

<b>Project</b>	Double Willow		
<b>Map System:</b>	US State Plane 1983	<b>System Datum:</b>	Mean Sea Level
<b>Geo Datum:</b>	North American Datum 1983		
<b>Map Zone:</b>	Colorado Central Zone		

<b>Site</b>	S28-T4S-R96W (P28 496)(column pattern)			
<b>Site Position:</b>		<b>Northing:</b>	1,679,243.29 ft	<b>Latitude:</b> 39° 40' 5.13 N
<b>From:</b>	Lat/Long	<b>Easting:</b>	2,249,687.54 ft	<b>Longitude:</b> 108° 9' 56.55 W
<b>Position Uncertainty:</b>	0.0 ft	<b>Slot Radius:</b>	13.200 in	<b>Grid Convergence:</b> -1.68 °

<b>Well</b>	DW 8608D-28 (P28 496)			
<b>Well Position</b>	<b>+N/-S</b>	-8.1 ft	<b>Northing:</b>	1,679,235.22 ft
	<b>+E/-W</b>	0.0 ft	<b>Easting:</b>	2,249,687.30 ft
<b>Position Uncertainty</b>		0.0 ft	<b>Wellhead Elevation:</b>	ft
			<b>Ground Level:</b>	7,771.0 ft

<b>Wellbore</b>	DD				
<b>Magnetics</b>	<b>Model Name</b>	<b>Sample Date</b>	<b>Declination (°)</b>	<b>Dip Angle (°)</b>	<b>Field Strength (nT)</b>
	IGRF2010	12/1/2010	10.52	65.86	52,361

<b>Design</b>	Plan #1			
<b>Audit Notes:</b>				
<b>Version:</b>	<b>Phase:</b>	PLAN	<b>Tie On Depth:</b>	0.0
<b>Vertical Section:</b>	<b>Depth From (TVD) (ft)</b>	<b>+N/-S (ft)</b>	<b>+E/-W (ft)</b>	<b>Direction (°)</b>
	0.0	-8.1	0.0	340.71

<b>Plan Sections</b>										
Measured Depth (ft)	Inclination (°)	Azimuth (°)	Vertical Depth (ft)	+N/-S (ft)	+E/-W (ft)	Dogleg Rate (°/100ft)	Build Rate (°/100ft)	Turn Rate (°/100ft)	TFO (°)	Target
0.0	0.00	0.00	0.0	-8.1	0.0	0.00	0.00	0.00	0.00	
300.0	0.00	0.00	300.0	-8.1	0.0	0.00	0.00	0.00	0.00	
1,079.8	23.39	341.13	1,058.3	140.5	-50.8	3.00	3.00	0.00	341.13	
6,947.5	23.39	341.13	6,443.7	2,345.0	-804.4	0.00	0.00	0.00	0.00	
7,727.3	0.00	0.00	7,202.0	2,493.5	-855.2	3.00	-3.00	0.00	180.00	DW 8608D-28 P28 496
7,853.2	0.31	239.47	7,327.9	2,493.4	-855.5	0.25	0.25	-95.76	239.47	
11,387.4	0.31	239.47	10,862.0	2,483.5	-872.2	0.00	0.00	0.00	0.00	DW 8608D-28 P28 496
12,637.4	0.31	239.47	12,112.0	2,480.0	-878.1	0.00	0.00	0.00	0.00	
12,887.4	0.31	239.47	12,362.0	2,479.3	-879.3	0.00	0.00	0.00	0.00	

# Cathedral Energy Services

## Planning Report

<b>Database:</b>	EDM 5000.1 US Multi Users DB	<b>Local Co-ordinate Reference:</b>	Site S28-T4S-R96W (P28 496)(column pattern)
<b>Company:</b>	EnCana Oil & Gas (USA) Inc	<b>TVD Reference:</b>	WELL @ 7804.0ft (Original Well Elev)
<b>Project:</b>	Double Willow	<b>MD Reference:</b>	WELL @ 7804.0ft (Original Well Elev)
<b>Site:</b>	S28-T4S-R96W (P28 496)(column pattern)	<b>North Reference:</b>	True
<b>Well:</b>	DW 8608D-28 (P28 496)	<b>Survey Calculation Method:</b>	Minimum Curvature
<b>Wellbore:</b>	DD		
<b>Design:</b>	Plan #1		

### Planned Survey

Measured Depth (ft)	Inclination (°)	Azimuth (°)	Vertical Depth (ft)	+N/-S (ft)	+E/-W (ft)	Vertical Section (ft)	Dogleg Rate (°/100ft)	Build Rate (°/100ft)	Comments / Formations
0.0	0.00	0.00	0.0	-8.1	0.0	0.0	0.00	0.00	
100.0	0.00	0.00	100.0	-8.1	0.0	0.0	0.00	0.00	
162.0	0.00	0.00	162.0	-8.1	0.0	0.0	0.00	0.00	Para Creek (TVD)
200.0	0.00	0.00	200.0	-8.1	0.0	0.0	0.00	0.00	
300.0	0.00	0.00	300.0	-8.1	0.0	0.0	0.00	0.00	KOP @ 300' MD
400.0	3.00	341.13	400.0	-5.6	-0.8	2.6	3.00	3.00	
462.2	4.87	341.13	462.0	-1.6	-2.2	6.9	3.00	3.00	Mahog Bench (TVD)
500.0	6.00	341.13	499.6	1.8	-3.4	10.5	3.00	3.00	
522.5	6.68	341.13	522.0	4.2	-4.2	12.9	3.00	3.00	Base B Groove (TVD)
600.0	9.00	341.13	598.8	14.2	-7.6	23.5	3.00	3.00	
700.0	12.00	341.13	697.1	31.4	-13.5	41.7	3.00	3.00	
800.0	15.00	341.13	794.3	53.5	-21.1	65.1	3.00	3.00	
900.0	18.00	341.13	890.2	80.4	-30.2	93.5	3.00	3.00	
1,000.0	21.00	341.13	984.4	112.0	-41.0	126.8	3.00	3.00	
1,079.8	23.39	341.13	1,058.3	140.5	-50.8	157.0	3.00	3.00	EOB; Inc=23.39°
1,100.0	23.39	341.13	1,076.9	148.1	-53.4	165.0	0.00	0.00	
1,200.0	23.39	341.13	1,168.6	185.6	-66.2	204.7	0.00	0.00	
1,300.0	23.39	341.13	1,260.4	223.2	-79.1	244.4	0.00	0.00	
1,400.0	23.39	341.13	1,352.2	260.8	-91.9	284.1	0.00	0.00	
1,500.0	23.39	341.13	1,444.0	298.3	-104.8	323.8	0.00	0.00	
1,600.0	23.39	341.13	1,535.8	335.9	-117.6	363.5	0.00	0.00	
1,700.0	23.39	341.13	1,627.5	373.5	-130.4	403.2	0.00	0.00	
1,800.0	23.39	341.13	1,719.3	411.1	-143.3	442.9	0.00	0.00	
1,900.0	23.39	341.13	1,811.1	448.6	-156.1	482.6	0.00	0.00	
2,000.0	23.39	341.13	1,902.9	486.2	-169.0	522.3	0.00	0.00	
2,100.0	23.39	341.13	1,994.7	523.8	-181.8	562.0	0.00	0.00	
2,200.0	23.39	341.13	2,086.4	561.3	-194.7	601.8	0.00	0.00	
2,300.0	23.39	341.13	2,178.2	598.9	-207.5	641.5	0.00	0.00	
2,400.0	23.39	341.13	2,270.0	636.5	-220.3	681.2	0.00	0.00	
2,500.0	23.39	341.13	2,361.8	674.0	-233.2	720.9	0.00	0.00	
2,600.0	23.39	341.13	2,453.6	711.6	-246.0	760.6	0.00	0.00	
2,700.0	23.39	341.13	2,545.3	749.2	-258.9	800.3	0.00	0.00	
2,800.0	23.39	341.13	2,637.1	786.8	-271.7	840.0	0.00	0.00	
2,900.0	23.39	341.13	2,728.9	824.3	-284.6	879.7	0.00	0.00	
3,000.0	23.39	341.13	2,820.7	861.9	-297.4	919.4	0.00	0.00	
3,100.0	23.39	341.13	2,912.4	899.5	-310.3	959.1	0.00	0.00	
3,200.0	23.39	341.13	3,004.2	937.0	-323.1	998.8	0.00	0.00	
3,300.0	23.39	341.13	3,096.0	974.6	-335.9	1,038.5	0.00	0.00	
3,400.0	23.39	341.13	3,187.8	1,012.2	-348.8	1,078.2	0.00	0.00	
3,500.0	23.39	341.13	3,279.6	1,049.7	-361.6	1,117.9	0.00	0.00	
3,600.0	23.39	341.13	3,371.3	1,087.3	-374.5	1,157.6	0.00	0.00	
3,700.0	23.39	341.13	3,463.1	1,124.9	-387.3	1,197.3	0.00	0.00	
3,800.0	23.39	341.13	3,554.9	1,162.5	-400.2	1,237.0	0.00	0.00	
3,900.0	23.39	341.13	3,646.7	1,200.0	-413.0	1,276.7	0.00	0.00	
4,000.0	23.39	341.13	3,738.5	1,237.6	-425.8	1,316.4	0.00	0.00	
4,100.0	23.39	341.13	3,830.2	1,275.2	-438.7	1,356.1	0.00	0.00	
4,200.0	23.39	341.13	3,922.0	1,312.7	-451.5	1,395.8	0.00	0.00	
4,300.0	23.39	341.13	4,013.8	1,350.3	-464.4	1,435.5	0.00	0.00	
4,352.5	23.39	341.13	4,062.0	1,370.0	-471.1	1,456.4	0.00	0.00	Was G (TVD)
4,400.0	23.39	341.13	4,105.6	1,387.9	-477.2	1,475.2	0.00	0.00	
4,500.0	23.39	341.13	4,197.4	1,425.4	-490.1	1,514.9	0.00	0.00	
4,600.0	23.39	341.13	4,289.1	1,463.0	-502.9	1,554.6	0.00	0.00	

# Cathedral Energy Services

## Planning Report

<b>Database:</b>	EDM 5000.1 US Multi Users DB	<b>Local Co-ordinate Reference:</b>	Site S28-T4S-R96W (P28 496)(column pattern)
<b>Company:</b>	EnCana Oil & Gas (USA) Inc	<b>TVD Reference:</b>	WELL @ 7804.0ft (Original Well Elev)
<b>Project:</b>	Double Willow	<b>MD Reference:</b>	WELL @ 7804.0ft (Original Well Elev)
<b>Site:</b>	S28-T4S-R96W (P28 496)(column pattern)	<b>North Reference:</b>	True
<b>Well:</b>	DW 8608D-28 (P28 496)	<b>Survey Calculation Method:</b>	Minimum Curvature
<b>Wellbore:</b>	DD		
<b>Design:</b>	Plan #1		

### Planned Survey

Measured Depth (ft)	Inclination (°)	Azimuth (°)	Vertical Depth (ft)	+N/-S (ft)	+E/-W (ft)	Vertical Section (ft)	Dogleg Rate (°/100ft)	Build Rate (°/100ft)	Comments / Formations
4,700.0	23.39	341.13	4,380.9	1,500.6	-515.8	1,594.3	0.00	0.00	
4,800.0	23.39	341.13	4,472.7	1,538.2	-528.6	1,634.0	0.00	0.00	
4,900.0	23.39	341.13	4,564.5	1,575.7	-541.4	1,673.8	0.00	0.00	
5,000.0	23.39	341.13	4,656.3	1,613.3	-554.3	1,713.5	0.00	0.00	
5,100.0	23.39	341.13	4,748.0	1,650.9	-567.1	1,753.2	0.00	0.00	
5,200.0	23.39	341.13	4,839.8	1,688.4	-580.0	1,792.9	0.00	0.00	
5,300.0	23.39	341.13	4,931.6	1,726.0	-592.8	1,832.6	0.00	0.00	
5,400.0	23.39	341.13	5,023.4	1,763.6	-605.7	1,872.3	0.00	0.00	
5,500.0	23.39	341.13	5,115.2	1,801.1	-618.5	1,912.0	0.00	0.00	
5,600.0	23.39	341.13	5,206.9	1,838.7	-631.3	1,951.7	0.00	0.00	
5,700.0	23.39	341.13	5,298.7	1,876.3	-644.2	1,991.4	0.00	0.00	
5,800.0	23.39	341.13	5,390.5	1,913.9	-657.0	2,031.1	0.00	0.00	
5,900.0	23.39	341.13	5,482.3	1,951.4	-669.9	2,070.8	0.00	0.00	
6,000.0	23.39	341.13	5,574.1	1,989.0	-682.7	2,110.5	0.00	0.00	
6,100.0	23.39	341.13	5,665.8	2,026.6	-695.6	2,150.2	0.00	0.00	
6,200.0	23.39	341.13	5,757.6	2,064.1	-708.4	2,189.9	0.00	0.00	
6,300.0	23.39	341.13	5,849.4	2,101.7	-721.3	2,229.6	0.00	0.00	
6,400.0	23.39	341.13	5,941.2	2,139.3	-734.1	2,269.3	0.00	0.00	
6,500.0	23.39	341.13	6,033.0	2,176.8	-746.9	2,309.0	0.00	0.00	
6,600.0	23.39	341.13	6,124.7	2,214.4	-759.8	2,348.7	0.00	0.00	
6,700.0	23.39	341.13	6,216.5	2,252.0	-772.6	2,388.4	0.00	0.00	
6,800.0	23.39	341.13	6,308.3	2,289.6	-785.5	2,428.1	0.00	0.00	
6,900.0	23.39	341.13	6,400.1	2,327.1	-798.3	2,467.8	0.00	0.00	
6,947.5	23.39	341.13	6,443.7	2,345.0	-804.4	2,486.7	0.00	0.00	Start Drop -3.00
7,000.0	21.82	341.13	6,492.1	2,364.1	-810.9	2,506.9	3.00	-3.00	
7,100.0	18.82	341.13	6,585.9	2,396.9	-822.2	2,541.6	3.00	-3.00	
7,200.0	15.82	341.13	6,681.4	2,425.1	-831.8	2,571.3	3.00	-3.00	
7,300.0	12.82	341.13	6,778.2	2,448.5	-839.8	2,596.1	3.00	-3.00	
7,400.0	9.82	341.13	6,876.3	2,467.1	-846.2	2,615.7	3.00	-3.00	
7,500.0	6.82	341.13	6,975.2	2,480.7	-850.8	2,630.2	3.00	-3.00	
7,600.0	3.82	341.13	7,074.8	2,489.5	-853.8	2,639.4	3.00	-3.00	
7,687.3	1.20	341.13	7,162.0	2,493.1	-855.1	2,643.3	3.00	-3.00	WF (TVD)
7,700.0	0.82	341.13	7,174.7	2,493.3	-855.1	2,643.5	3.00	-3.00	
7,727.3	0.00	0.00	7,202.0	2,493.5	-855.2	2,643.7	3.00	-3.00	EOD; Inc=0° - TOG (TVD) - DW 8608D-28 P28
7,800.0	0.18	239.47	7,274.7	2,493.5	-855.3	2,643.7	0.25	0.25	
7,853.2	0.31	239.47	7,327.9	2,493.4	-855.5	2,643.6	0.25	0.25	
7,900.0	0.31	239.47	7,374.7	2,493.2	-855.7	2,643.6	0.00	0.00	
8,000.0	0.31	239.47	7,474.7	2,492.9	-856.2	2,643.5	0.00	0.00	
8,100.0	0.31	239.47	7,574.7	2,492.7	-856.7	2,643.3	0.00	0.00	
8,200.0	0.31	239.47	7,674.7	2,492.4	-857.1	2,643.2	0.00	0.00	
8,300.0	0.31	239.47	7,774.7	2,492.1	-857.6	2,643.1	0.00	0.00	
8,400.0	0.31	239.47	7,874.7	2,491.8	-858.1	2,643.0	0.00	0.00	
8,500.0	0.31	239.47	7,974.7	2,491.6	-858.6	2,642.9	0.00	0.00	
8,600.0	0.31	239.47	8,074.7	2,491.3	-859.0	2,642.8	0.00	0.00	
8,700.0	0.31	239.47	8,174.7	2,491.0	-859.5	2,642.7	0.00	0.00	
8,800.0	0.31	239.47	8,274.7	2,490.7	-860.0	2,642.6	0.00	0.00	
8,900.0	0.31	239.47	8,374.7	2,490.4	-860.5	2,642.5	0.00	0.00	
9,000.0	0.31	239.47	8,474.7	2,490.2	-860.9	2,642.4	0.00	0.00	
9,100.0	0.31	239.47	8,574.7	2,489.9	-861.4	2,642.3	0.00	0.00	
9,200.0	0.31	239.47	8,674.7	2,489.6	-861.9	2,642.2	0.00	0.00	
9,300.0	0.31	239.47	8,774.7	2,489.3	-862.3	2,642.1	0.00	0.00	
9,400.0	0.31	239.47	8,874.7	2,489.0	-862.8	2,642.0	0.00	0.00	

# Cathedral Energy Services

## Planning Report

<b>Database:</b>	EDM 5000.1 US Multi Users DB	<b>Local Co-ordinate Reference:</b>	Site S28-T4S-R96W (P28 496)(column pattern)
<b>Company:</b>	EnCana Oil & Gas (USA) Inc	<b>TVD Reference:</b>	WELL @ 7804.0ft (Original Well Elev)
<b>Project:</b>	Double Willow	<b>MD Reference:</b>	WELL @ 7804.0ft (Original Well Elev)
<b>Site:</b>	S28-T4S-R96W (P28 496)(column pattern)	<b>North Reference:</b>	True
<b>Well:</b>	DW 8608D-28 (P28 496)	<b>Survey Calculation Method:</b>	Minimum Curvature
<b>Wellbore:</b>	DD		
<b>Design:</b>	Plan #1		

Planned Survey									
Measured Depth (ft)	Inclination (°)	Azimuth (°)	Vertical Depth (ft)	+N/-S (ft)	+E/-W (ft)	Vertical Section (ft)	Dogleg Rate (°/100ft)	Build Rate (°/100ft)	Comments / Formations
9,500.0	0.31	239.47	8,974.7	2,488.8	-863.3	2,641.8	0.00	0.00	
9,600.0	0.31	239.47	9,074.7	2,488.5	-863.8	2,641.7	0.00	0.00	
9,700.0	0.31	239.47	9,174.7	2,488.2	-864.2	2,641.6	0.00	0.00	
9,800.0	0.31	239.47	9,274.7	2,487.9	-864.7	2,641.5	0.00	0.00	
9,900.0	0.31	239.47	9,374.7	2,487.6	-865.2	2,641.4	0.00	0.00	
10,000.0	0.31	239.47	9,474.7	2,487.4	-865.7	2,641.3	0.00	0.00	
10,100.0	0.31	239.47	9,574.7	2,487.1	-866.1	2,641.2	0.00	0.00	
10,200.0	0.31	239.47	9,674.7	2,486.8	-866.6	2,641.1	0.00	0.00	
10,300.0	0.31	239.47	9,774.7	2,486.5	-867.1	2,641.0	0.00	0.00	
10,400.0	0.31	239.47	9,874.7	2,486.3	-867.5	2,640.9	0.00	0.00	
10,500.0	0.31	239.47	9,974.7	2,486.0	-868.0	2,640.8	0.00	0.00	
10,600.0	0.31	239.47	10,074.6	2,485.7	-868.5	2,640.7	0.00	0.00	
10,700.0	0.31	239.47	10,174.6	2,485.4	-869.0	2,640.6	0.00	0.00	
10,800.0	0.31	239.47	10,274.6	2,485.1	-869.4	2,640.5	0.00	0.00	
10,900.0	0.31	239.47	10,374.6	2,484.9	-869.9	2,640.4	0.00	0.00	
11,000.0	0.31	239.47	10,474.6	2,484.6	-870.4	2,640.2	0.00	0.00	
11,100.0	0.31	239.47	10,574.6	2,484.3	-870.9	2,640.1	0.00	0.00	
11,200.0	0.31	239.47	10,674.6	2,484.0	-871.3	2,640.0	0.00	0.00	
11,300.0	0.31	239.47	10,774.6	2,483.7	-871.8	2,639.9	0.00	0.00	
11,387.4	0.31	239.47	10,862.0	2,483.5	-872.2	2,639.8	0.00	0.00	Rins (TVD) - DW 8608D-28 P28 496 PBHL (Co
11,400.0	0.31	239.47	10,874.6	2,483.5	-872.3	2,639.8	0.00	0.00	
11,500.0	0.31	239.47	10,974.6	2,483.2	-872.7	2,639.7	0.00	0.00	
11,600.0	0.31	239.47	11,074.6	2,482.9	-873.2	2,639.6	0.00	0.00	
11,700.0	0.31	239.47	11,174.6	2,482.6	-873.7	2,639.5	0.00	0.00	
11,717.4	0.31	239.47	11,192.0	2,482.6	-873.8	2,639.5	0.00	0.00	Cozz (TVD)
11,800.0	0.31	239.47	11,274.6	2,482.3	-874.2	2,639.4	0.00	0.00	
11,900.0	0.31	239.47	11,374.6	2,482.1	-874.6	2,639.3	0.00	0.00	
11,907.4	0.31	239.47	11,382.0	2,482.0	-874.7	2,639.3	0.00	0.00	Corc (TVD)
12,000.0	0.31	239.47	11,474.6	2,481.8	-875.1	2,639.2	0.00	0.00	
12,100.0	0.31	239.47	11,574.6	2,481.5	-875.6	2,639.1	0.00	0.00	
12,187.4	0.31	239.47	11,662.0	2,481.3	-876.0	2,639.0	0.00	0.00	Sego (TVD)
12,200.0	0.31	239.47	11,674.6	2,481.2	-876.1	2,639.0	0.00	0.00	
12,300.0	0.31	239.47	11,774.6	2,481.0	-876.5	2,638.9	0.00	0.00	
12,387.4	0.31	239.47	11,862.0	2,480.7	-876.9	2,638.8	0.00	0.00	L Sego (TVD)
12,400.0	0.31	239.47	11,874.6	2,480.7	-877.0	2,638.7	0.00	0.00	
12,500.0	0.31	239.47	11,974.6	2,480.4	-877.5	2,638.6	0.00	0.00	
12,600.0	0.31	239.47	12,074.6	2,480.1	-878.0	2,638.5	0.00	0.00	
12,637.4	0.31	239.47	12,112.0	2,480.0	-878.1	2,638.5	0.00	0.00	Driller's TD @ 12637.4' MD
12,700.0	0.31	239.47	12,174.6	2,479.8	-878.4	2,638.4	0.00	0.00	
12,800.0	0.31	239.47	12,274.6	2,479.6	-878.9	2,638.3	0.00	0.00	
12,887.4	0.31	239.47	12,362.0	2,479.3	-879.3	2,638.2	0.00	0.00	

# Cathedral Energy Services

## Planning Report

<b>Database:</b>	EDM 5000.1 US Multi Users DB	<b>Local Co-ordinate Reference:</b>	Site S28-T4S-R96W (P28 496)(column pattern)
<b>Company:</b>	EnCana Oil & Gas (USA) Inc	<b>TVD Reference:</b>	WELL @ 7804.0ft (Original Well Elev)
<b>Project:</b>	Double Willow	<b>MD Reference:</b>	WELL @ 7804.0ft (Original Well Elev)
<b>Site:</b>	S28-T4S-R96W (P28 496)(column pattern)	<b>North Reference:</b>	True
<b>Well:</b>	DW 8608D-28 (P28 496)	<b>Survey Calculation Method:</b>	Minimum Curvature
<b>Wellbore:</b>	DD		
<b>Design:</b>	Plan #1		

Targets									
Target Name									
- hit/miss target	Dip Angle	Dip Dir.	TVD	+N/-S	+E/-W	Northing	Easting	Latitude	Longitude
- Shape	(°)	(°)	(ft)	(ft)	(ft)	(ft)	(ft)		
DW 8608D-28 P28 496	0.00	0.00	7,202.0	2,493.5	-855.2	1,681,760.84	2,248,905.87	39° 40' 29.77 N	108° 10' 7.49 W
- plan hits target center									
- Point									
DW 8608D-28 P28 496 I	0.00	0.00	10,862.0	2,483.5	-872.2	1,681,751.31	2,248,888.56	39° 40' 29.67 N	108° 10' 7.70 W
- plan hits target center									
- Rectangle (sides W30.0 H50.0 D0.0)									

Formations						
Measured Depth	Vertical Depth	Name	Lithology	Dip	Dip Direction	
(ft)	(ft)			(°)	(°)	
162.0	162.0	Para Creek (TVD)				
462.2	462.0	Mahog Bench (TVD)				
522.5	522.0	Base B Groove (TVD)				
4,352.5	4,062.0	Was G (TVD)				
7,687.3	7,162.0	WF (TVD)				
7,727.3	7,202.0	TOG (TVD)				
11,387.4	10,862.0	Rlns (TVD)				
11,717.4	11,192.0	Cozz (TVD)				
11,907.4	11,382.0	Corc (TVD)				
12,187.4	11,662.0	Sego (TVD)				
12,387.4	11,862.0	L Sego (TVD)				

Plan Annotations				
Measured Depth	Vertical Depth	Local Coordinates		Comment
(ft)	(ft)	+N/-S (ft)	+E/-W (ft)	
300.0	300.0	-8.1	0.0	KOP @ 300' MD
1,079.8	1,058.3	140.5	-50.8	EOB; Inc=23.39°
6,947.5	6,443.7	2,345.0	-804.4	Start Drop -3.00
7,727.3	7,202.0	2,493.5	-855.2	EOD; Inc=0°
12,637.4	12,112.0	2,480.0	-878.1	Driller's TD @ 12637.4' MD
12,887.4	12,362.0	2,479.3	-879.3	Permit TD @ 12887.4' MD