

T4S, R96W, 6th P.M.

Encana OIL & GAS (USA) INC.

Well location, DW 8608D-28 P28 496, located as shown in the SE 1/4 SE 1/4 of Section 28, T4S, R96W, 6th P.M., Garfield County, Colorado.

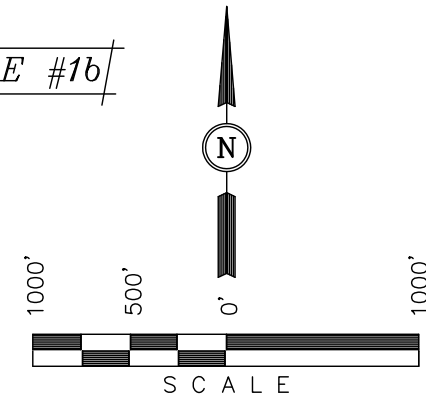
BASIS OF ELEVATION

BENCH MARK (H79) LOCATED IN THE NE 1/4 OF SECTION 35, T4S, R98W, 6th P.M. TAKEN FROM THE BULL FORK QUADRANGLE, COLORADO, 7.5 MINUTE SERIES (TOPO GRAPHICAL MAP) PUBLISHED BY THE UNITED STATES DEPARTMENT OF THE INTERIOR, GEOLOGICAL SURVEY. SAID ELEVATION IS MARKED AS BEING 8535 FEET.

BASIS OF BEARINGS

BASIS OF BEARINGS IS A G.P.S. OBSERVATION.

FIGURE #1b



CERTIFICATE

THIS IS TO CERTIFY THAT THE ABOVE PLAT WAS PREPARED FROM FIELD NOTES OF ACTUAL SURVEYS MADE BY ME OR UNDER MY SUPERVISION AND THAT THE SAME ARE TRUE AND CORRECT TO THE BEST OF MY KNOWLEDGE AND BELIEF.

REGISTERED LAND SURVEYOR  
REGISTRATION NO. 17492  
STATE OF COLORADO

REVISED: 01-25-11  
REVISED: 12-13-10

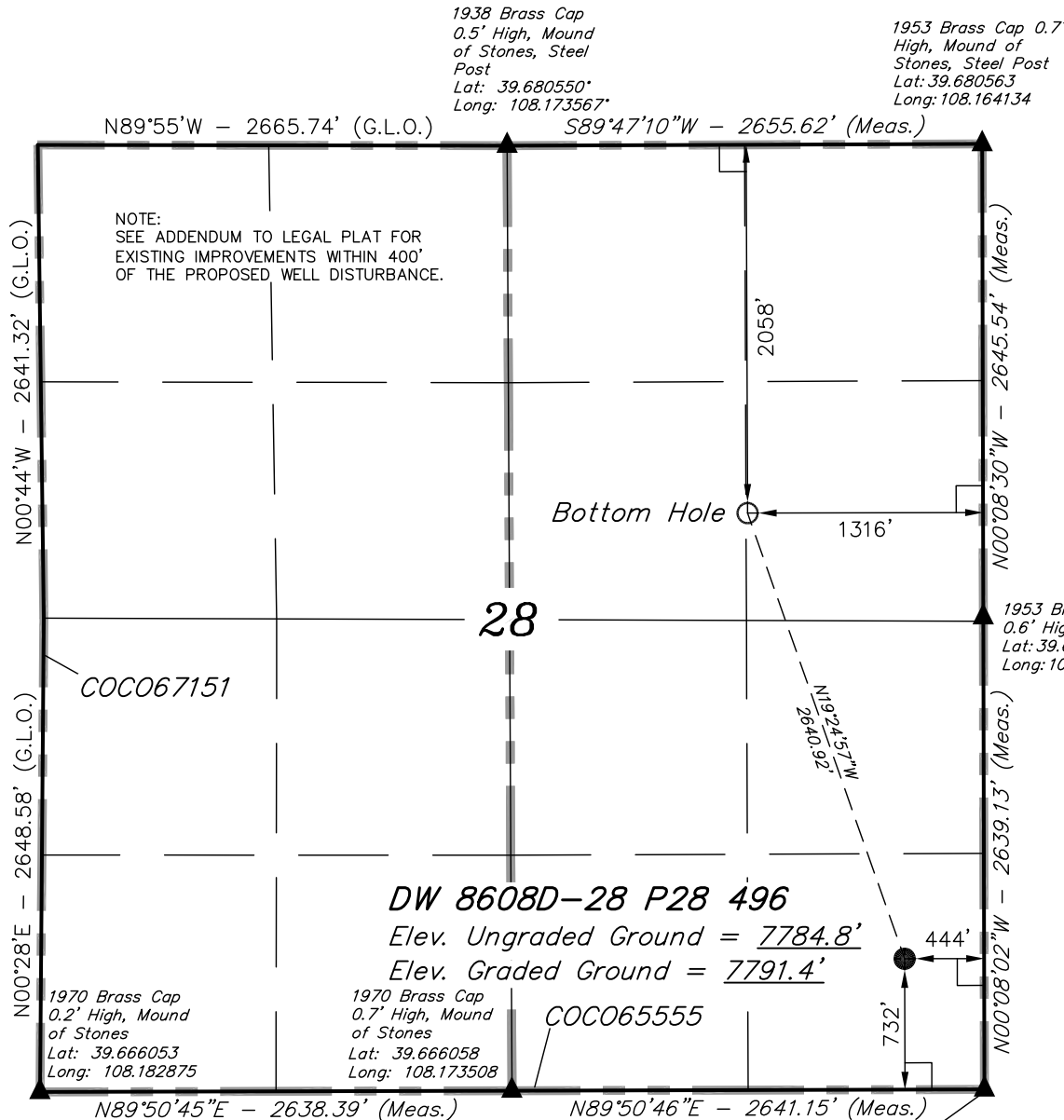
UINTAH ENGINEERING & LAND SURVEYING  
85 SOUTH 200 EAST - VERNAL, UTAH 84078  
(435) 789-1017

LEGEND:

- └─┘ = 90° SYMBOL  
● = PROPOSED WELL HEAD.  
▲ = SECTION CORNERS LOCATED.

NAD 83 (TARGET BOTTOM HOLE)	NAD 83 (SURFACE LOCATION)
LATITUDE = 39°40'29.67" (39.674908)	LATITUDE = 39°40'05.05" (39.668069)
LONGITUDE = 108°10'07.70" (108.168806)	LONGITUDE = 108°09'56.55" (108.165708)
NAD 27 (TARGET BOTTOM HOLE)	NAD 27 (SURFACE LOCATION)
LATITUDE = 39°40'29.76" (39.674933)	LATITUDE = 39°40'05.14" (39.668094)
LONGITUDE = 108°10'05.41" (108.168169)	LONGITUDE = 108°09'54.26" (108.165072)

PDOP = 0.8



DW 8608D-28 P28 496

Elev. Ungraded Ground = 7784.8'

Elev. Graded Ground = 7791.4'

1970 Brass Cap  
0.7' High, Mound  
of Stones  
Lat: 39.666058  
Long: 108.173508

COC065555

1953 Brass Cap  
0.9' High, Steel  
Post  
Lat: 39.666061  
Long: 108.164131