

UNITED STATES
DEPARTMENT OF THE INTERIOR
BUREAU OF LAND MANAGEMENT

RECEIVED

FORM APPROVED
OMB No. 1004-0137
Expires: July 31, 2010

JAN 31 2011

SUNDRY NOTICES AND REPORTS ON WELLS
Do not use this form for proposals to drill or to re-enter an abandoned well. Use Form 3160-3 (APD) for such proposals.

SUBMIT IN TRIPLICATE - Other instructions on page 2.

1. Type of Well

☐ Oil Well ☒ Gas Well ☐ Other2. Name of Operator
Patara Oil & Gas, LLC3a. Address
600 17th Street, Suite 1900S, Denver, CO 802023b. Phone No. (include area code)
303-563-53694. Location of Well (Footage, Sec., T., R., M., or Survey Description)
537' FSL, 626' FEL, SE SE, Section 20, T44N, R16W5. Lease Serial No.
C-45989

6. If Indian, Allottee or Tribe Name

7. If Unit of CA/Agreement, Name and/or No.

8. Well Name and No.
Andy's Mesa Federal #319. API Well No.
05-113-06110410. Field and Pool or Exploratory Area
Andy's Mesa11. Country or Parish, State
San Miguel, Colorado

12. CHECK THE APPROPRIATE BOX(ES) TO INDICATE NATURE OF NOTICE, REPORT OR OTHER DATA

TYPE OF SUBMISSION	TYPE OF ACTION			
<input checked="" type="checkbox"/> Notice of Intent	<input type="checkbox"/> Acidize	<input type="checkbox"/> Deepen	<input type="checkbox"/> Production (Start/Resume)	<input type="checkbox"/> Water Shut-Off
<input type="checkbox"/> Subsequent Report	<input type="checkbox"/> Alter Casing	<input type="checkbox"/> Fracture Treat	<input type="checkbox"/> Reclamation	<input type="checkbox"/> Well Integrity
<input type="checkbox"/> Final Abandonment Notice	<input type="checkbox"/> Casing Repair	<input type="checkbox"/> New Construction	<input type="checkbox"/> Recomplete	<input type="checkbox"/> Other _____
	<input type="checkbox"/> Change Plans	<input checked="" type="checkbox"/> Plug and Abandon	<input type="checkbox"/> Temporarily Abandon	
	<input type="checkbox"/> Convert to Injection	<input type="checkbox"/> Plug Back	<input type="checkbox"/> Water Disposal	

13. Describe Proposed or Completed Operation: Clearly state all pertinent details, including estimated starting date of any proposed work and approximate duration thereof. If the proposal is to deepen directionally or recompleate horizontally, give subsurface locations and measured and true vertical depths of all pertinent markers and zones. Attach the Bond under which the work will be performed or provide the Bond No. on file with BLM/BIA. Required subsequent reports must be filed within 30 days following completion of the involved operations. If the operation results in a multiple completion or recompleation in a new interval, a Form 3160-4 must be filed once testing has been completed. Final Abandonment Notices must be filed only after all requirements, including reclamation, have been completed and the operator has determined that the site is ready for final inspection.)

Patara Oil & Gas, LLC proposes to P&A the Andy's Mesa Federal #31 wellbore. All potential productive intervals have been either produced or tested and found to be non productive. Attached is the existing wellbore diagram, a proposed P&A procedure and a proposed wellbore diagram depicting the placement of the cement plugs and downhole equipment as follows:

Set CIBP above perms at 6090' and circ hole w/ 9.0 ppg fluid.
Plug #1: Spot 100 ft of 16.0 ppg cement on top of CIBP 6090 - 5990'.
Plug #2: Spot 100 ft of 16.0 ppg cement 4420 - 4320'.
Csg bond log indicates TOC is at 3450'. Perforate csg at 2962' to circulate cement into annulus.
Set cement retainer at 2912'. Establish circulation up annulus through surface valve.
Plug #3: Cement through retainer to spot 200' of 16.0 ppg cement in annulus 2962 - 2762'. Spot cement ontop of retainer to 2762'.
Perforate csg at 200'. Establish circulation up annulus through surface valve.
Plug #4: Circulate 38 bbls of 16.0 ppg cement down csg and up the annulus for a 200 ft plug to surface in the csg and annulus.
Cut off casings 5 ft below grade and weld on cap w/ well information.

P&A work is currently scheduled on this well for August, 2011. Site reclamation plan will be submitted at a later date.

14. I hereby certify that the foregoing is true and correct. Name (Printed/Typed)
John B. Warren

Title Production Manager

Signature

Date 01/21/2011

THIS SPACE FOR FEDERAL OR STATE OFFICE USE

Approved by

Title

Date

Conditions of approval, if any, are attached. Approval of this notice does not warrant or certify that the applicant holds legal or equitable title to those rights in the subject lease which would entitle the applicant to conduct operations thereon.

Office

Title 18 U.S.C. Section 1001 and Title 43 U.S.C. Section 1212, make it a crime for any person knowingly and willfully to make to any department or agency of the United States any false, fictitious or fraudulent statements or representations as to any matter within its jurisdiction.

(Instructions on page 2)

OPERATOR'S COPY

Andy's Mesa #31
SE SE Section 20-T44N-R16W
San Miguel County, Colorado

Proposed P&A Procedure
1/20/2011

Well Data

KB: 6493'
GL: 6475'

Surface Casing: 9 5/8" 36#/ft K-55 LT&C
Set at 2862'
Cemented to surface

Production Casing: 5 1/2" 17#/ft N-80 LT&C
Set at 8827'
TOC 3450' based on bond log

Casing capacity = 0.0232 bbl/ft
Casing annulus capacity = 0.0479 bbl/ft

Tubing: No tubing in well

Perforations: See wellbore schematic for detail
5338 – 5856' Squeezed off in 12/03
6133 – 8124' Open but non productive
Current PBTD is a CIBP at 8150'

Recommended P&A Procedure

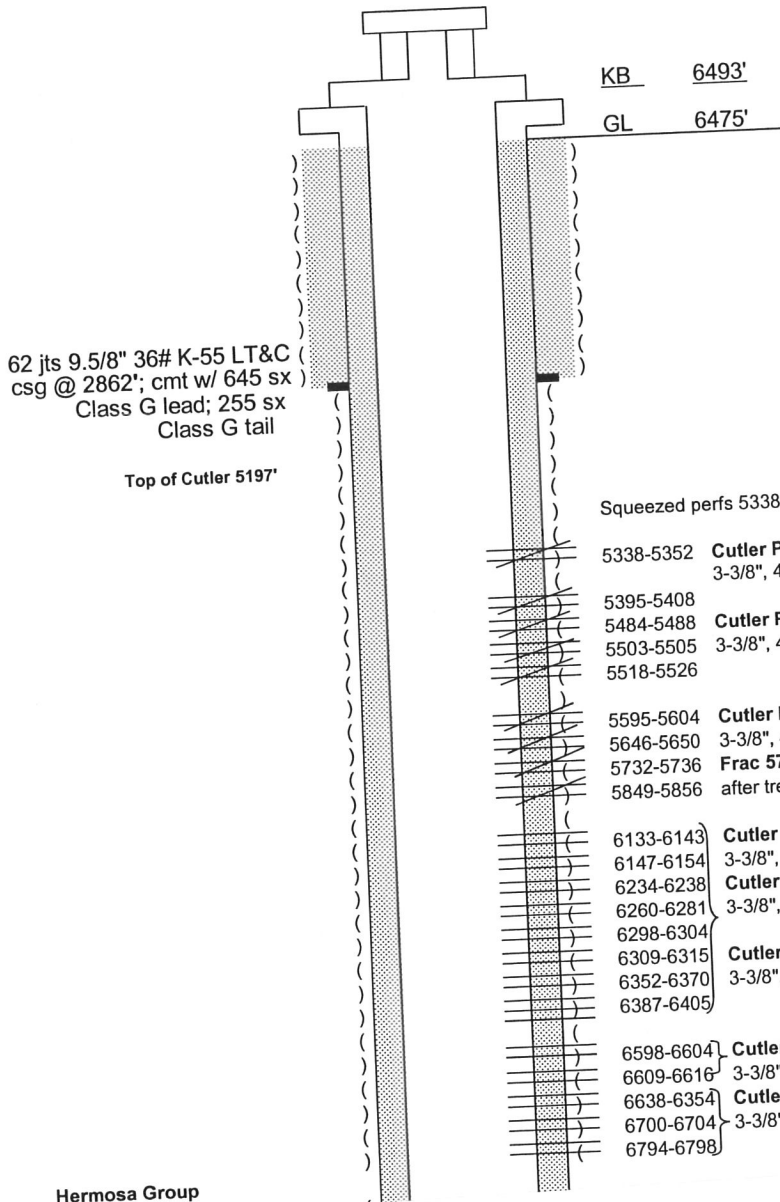
1. Unload 6300' TOM of tubing from the Hamilton Creek Yard. Spot 500 bbls of 9.0 fluid on site in a frac tank.
2. RU rig, flat tank and pump. ND tree and NU BOPs.
3. MU CIBP and RIH on tbg. Set CIBP at 6090'.
4. Circulate 141 bbls of 9.0 fluid inside of the 5 1/2" casing to displace volume.
5. Spot 3 bbls of 16.0 ppg Class G cement on top of CIBP. **Plug #1 cemented from 6090' to 5990'**. Recommend fresh water spacers before and after cement.

6. LD tubing to 4420'. Spot 3 bbls of 16.0 ppg Class G cement from 4420' to 4320'. **Plug #2 cemented from 4420' to 4320'.** Recommend fresh water spacers before and after cement.
7. POOH w/ tubing.
8. RU perforators. RIH w/ gauge ring and tag TOC. MU perforating gun w/ 4 shots at 90 degree phasing. RIH and perforate casing at 2962'. RD perforators.
9. MU cement retainer and TIH on tbg. Set retainer at 2912'. Establish circulation via annulus at surface valve using 9.0 ppg fluid.
10. Pump fresh water spacer and follow with 12 bbls of 16.0 ppg Class G cement. Sting out of retainer and spot 4 bbls of cement on top of retainer. **Plug #3 cemented from 2962' to 2762' inside 5 1/2" casing and 5 1/2" x 9 5/8" annulus.** Recommend follow cement w/ a fresh water spacer.
11. POOH LD tubing.
12. RU perforators. MU perforating gun w/ 4 shots at 90 degree phasing. RIH and perforate casing at 200'. RD perforators.
13. Bullhead in 38 bbls of 16.0 ppg Class G cement and circulate out of the surface valve. **Plug #4 cemented from 200' to surface.**
14. Cut off casings 5 ft below ground level. Send the bradenhead and tree to Cameron to be refurbished.
15. Weld on plate to cap well. Weld in well name, API #, location and GPS coordinates.
16. Fill in around wellhead. Remove surface equipment. Ship all tubing and surface equipment to the Hamilton Creek yard for storage.
17. Reclaim location per the reclamation procedure approved by the BLM.

WELLBORE DIAGRAM

Surface Loc: 537' FSL, 626' FEL

Operator: Tom Brown, Inc.
Well Name: Andy's Mesa 31
Lease Number: SESE Sec 20-T44N-R16W
Location: Andy's Mesa
Field: San Miguel County, CO
County: 05-113-06114
API Number: 12/8/2003
Diagram Date: Revised 2/5/07-jw



Well History

Spud Date 7/11/2003
TD Reached 8/5/2003
Rig Released 8/11/2003
Completion Date 12/21/2003
First Sales: 9/23/2003

Production Test Data:
10/28/2003 966 MCFD, 64/64 chk, CP 360
12/22/2003 0 MCFD, LP-140, TP-100, CP-940
Status as of 10/20/04: SI

Tubing was removed from well 12/11/06.

Squeezed perfs 5338-5856 w 300 sx Class G (12/10/03)

5338-5352 Cutler Perfs shot 10/21/03 (68 holes)
3-3/8", 4 SPF, 90° phasing

5395-5408 Cutler Perfs shot 10/18/03 (108 holes)
5484-5488 3-3/8", 4 SPF, 90° phasing
5503-5505
5518-5526

5595-5604 Cutler Perfs shot 10/17/03 (224 holes)
5646-5650 3-3/8", 4 SPF, 90° phasing
5732-5736 Frac 5732-5856 w/62,300# 20/40 sand and 70Q foam (11/15/03)
5849-5856 after treating with 49 bbls 4% KCL (11/14/03)

6133-6143 Cutler Perfs 6133-43, 6147-54, 6260-81, 6352-70 shot 9/30/03 (224 holes)
6147-6154 3-3/8", 4 SPF, 90° phasing
6234-6238 Cutler Perfs 6234-6238 shot 11/7/03 (16 holes)
6260-6281 3-3/8", 4 SPF, 90° phasing
6298-6304 Cutler Perfs 6298-6304, 6309-6315, 6387-6405 shot 11/25/03 (120 holes)
6309-6315 3-3/8", 4 SPF, 90° phasing
6352-6370
6387-6405

6598-6604 Cutler Perfs 6598-6604, 6609-6616 shot 9/26/03 (24 holes)
6609-6616 3-3/8", 4 SPF, 90° phasing
6638-6354 Cutler Perfs 6638-6354, 6700-6704, 6794-6798 shot 11/25/03 (96 holes)
6700-6704 3-3/8", 4 SPF, 90° phasing
6794-6798

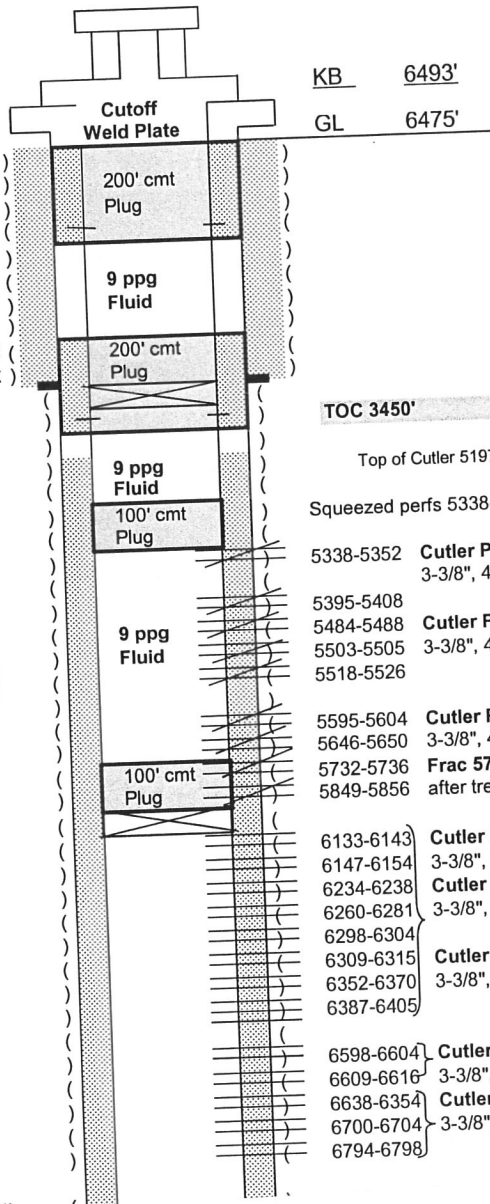
Hermosa Group

Top of Hermosa Trail 687'

PROPOSED P&A WELLBORE DIAGRAM

Surface Loc: 537' FSL, 626' FEL

Operator: Patara Oil & Gas, LLC
Well Name: Andy's Mesa 31
Lease Number: SESE Sec 20-T44N-R16W
Location: Andy's Mesa
Field: San Miguel County, CO
County: 05-113-06114
API Number: 12/8/2003 original
Diagram Date: Revised 2/5/07-jw EnCana
Revised 1/20/2011 J. Warren



62 jts 9.5/8" 36# K-55 LT&C
csg @ 2862'; cmt w/ 645 sx
Class G lead; 255 sx
Class G tail

Proposed Cement Plugs

Set CIBP @ 6090'
Plug #1: 6090 - 5990'
Plug #2: 4420 - 4320'
Perf casing at 2962'
Set Retainer at 2912'
Plug #3: 2962 - 2762'
Perf casing at 200'
Plug #4: 200' to surface

Well History

Spud Date 7/11/2003
ID Reached 8/5/2003
Rig Released 8/11/2003
Completion Date 12/21/2003
First Sales: 9/23/2003

Production Test Data:
10/28/2003 966 MCFD, 64/64 chk, CP 360
12/22/2003 0 MCFD, LP-140, TP-100, CP-940
Status as of 10/20/04: SI

Tubing was removed from well 12/11/06.

Squeezed perfs 5338-5856 w 300 sx Class G (12/10/03)

5338-5352 Cutler Perfs shot 10/21/03 (68 holes)
3-3/8", 4 SPF, 90° phasing

5395-5408
5484-5488 Cutler Perfs shot 10/18/03 (108 holes)
5503-5505 3-3/8", 4 SPF, 90° phasing
5518-5526

5595-5604 Cutler Perfs shot 10/17/03 (224 holes)
5646-5650 3-3/8", 4 SPF, 90° phasing
5732-5736 Frac 5732-5856 w/62,300# 20/40 sand and 70Q foam (11/15/03)
5849-5856 after treating with 49 bbls 4% KCL (11/14/03)

6133-6143 Cutler Perfs 6133-43, 6147-54, 6260-81, 6352-70 shot 9/30/03 (224 holes)
6147-6154 3-3/8", 4 SPF, 90° phasing
6234-6238 Cutler Perfs 6234-6238 shot 11/7/03 (16 holes)
6260-6281 3-3/8", 4 SPF, 90° phasing
6298-6304
6309-6315 Cutler Perfs 6298-6304, 6309-6315, 6387-6405 shot 11/25/03 (120 holes)
6352-6370 3-3/8", 4 SPF, 90° phasing
6387-6405

6598-6604 Cutler Perfs 6598-6604, 6609-6616 shot 9/26/03 (24 holes)
6609-6616 3-3/8", 4 SPF, 90° phasing
6638-6354 Cutler Perfs 6638-6354, 6700-6704, 6794-6798 shot 11/25/03 (96 holes)
6700-6704 3-3/8", 4 SPF, 90° phasing
6794-6798

Hermosa Group
Top of Honaker Trail 6974'

Patara Oil & Gas, LLC
Federal Lease: COC-045989
Well: Andy's Mesa # 31
Location: 537' FSL & 626' FEL
Sec. 20, T. 44 N., R. 16 W.
San Miguel County, Colorado

3160

Due to the extensive number of perforations in the wellbore, changes will have to be made to the proposed procedure to ensure this well is properly plugged. An attempt will have to be made to squeeze the perforations underneath the proposed cement retainers. These changes must be approved by this office prior the commencement of plugging operations. Please contact Dan Rabinowitz at 970-385-1363 to discuss these changes.

Please contact the Dolores Public Lands Office for surface reclamation instructions.

Conditions of Approval - Notice of Intent to Abandon:

1. Notify this office at least **72 hours** prior to commencing plugging operations.
2. Approval of this Notice of Intent to Abandon (NIA) is for down hole plugging only.
3. Materials used will be accurately measured.
4. A tank or approved pit must be used for containment of any fluids from the wellbore during plugging operations. All unattended pits are to be fenced.
5. Pits are not to be used for disposal of any unauthorized materials.

Continued on page 2.

6. All cement plugs are to be placed through a work string. Cement caps on top of bridge plugs or cement retainers may be placed by dump bailer.

6a. Cement plugs placed inside casing shall have sufficient volume to fill a minimum of 100 ft. of the casing or annular void(s) between casings, plus 10% excess volume per 1000 ft. of depth.

6b. Surface plugs must be a minimum of 50 ft. within casing and annular voids.

6c. Cement plugs placed to fill an open hole shall have sufficient volume to fill a minimum of 100 ft. of open hole, plus 10% excess volume per 1000 ft. of depth.

6d. 50 feet of cement must be placed on top of the CIBP at 8150 ft.

6e. A plug of +/- 50 feet must be placed to straddle the top of the Honaker Trail formation.

6f. A plug of +/- 50 feet must be placed to straddle the top of the Cutler Formation.

7. The well must be filled with a wellbore mud sufficient to stabilize the wellbore. In the absence of any formation pressure data provided by the operator, this mud will have a minimum weight of **9 ppg**. The mud must be left between all plugs.

8. A blowout preventer and related equipment shall be installed and tested prior to working in a wellbore with any exposed zones (a) that are overpressured, (b) where pressures are unknown, or (c) known to contain H₂S.

9. Within 30 days after plugging of the well, file 5 copies of a Subsequent Report of Abandonment Sundry Notice to this office. This report should include the following information:

- a. Date(s) of plugging operations.
- b. Procedure used to plug the well.
- c. Depth of plugs.
- d. Type and volume of plugs set.
- e. Casing types/lengths left in the well.