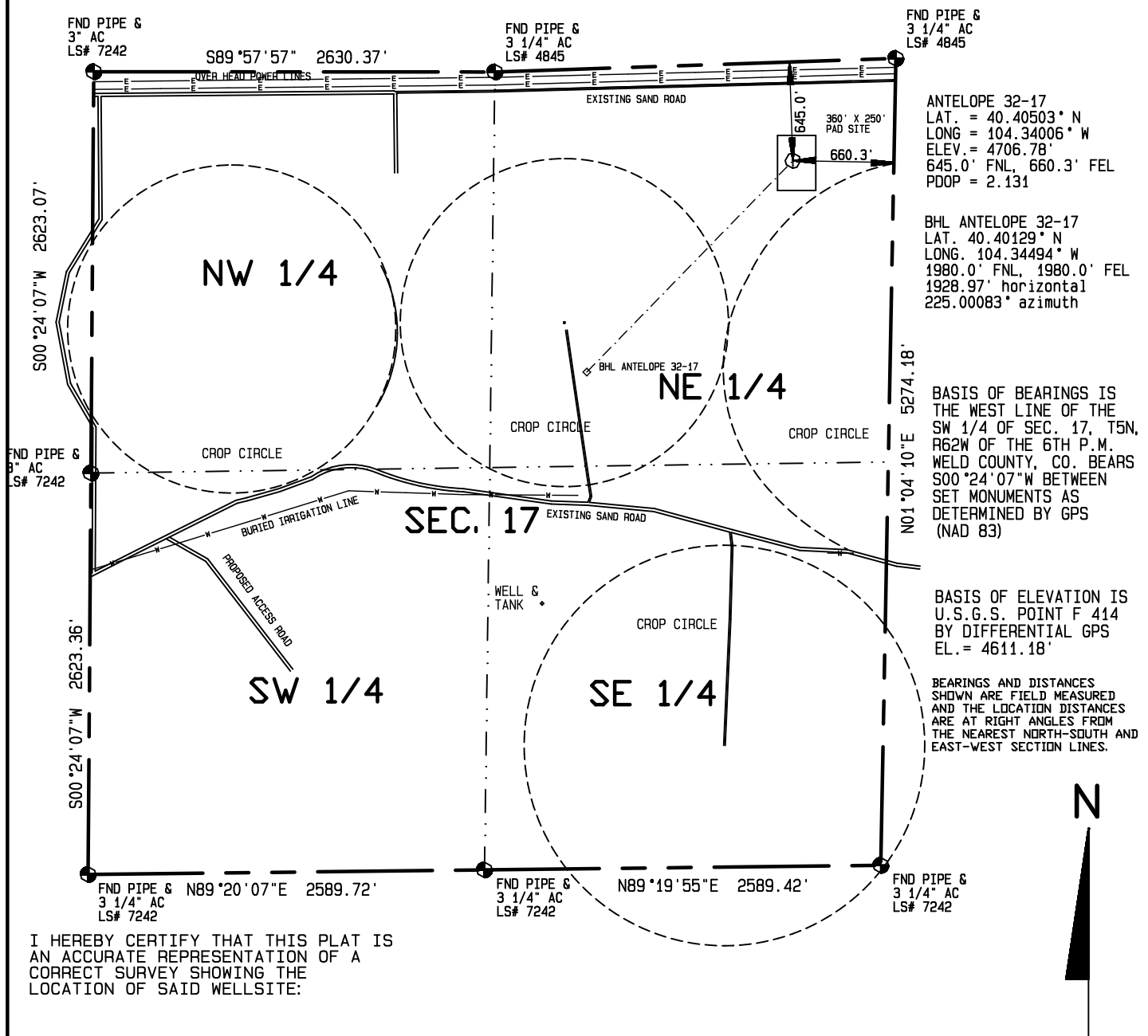
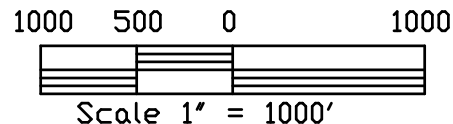


Visible improvements within 400 feet of the location include: edge of crop circle is 277' SE.



I HEREBY CERTIFY THAT THIS PLAT IS
AN ACCURATE REPRESENTATION OF A
CORRECT SURVEY SHOWING THE
LOCATION OF SAID WELLSITE:



Dan Griggs PLS# 38018

CONTRACT SURVEYORS, LTD.
COMPLETE SURVEYING AND GLOBAL POSITIONING

2133 SOUTH BELLAIRE STREET #14
DENVER COLORADO 80222
(303) 756-3695



MULTIPLE WELL PLAN
PAGE 3

CSL# 11104-26

DATE OF FIELD WORK:
23 MAY 2011

DATE OF DRAWING:
26 MAY 2011

ANTELOPE 32-17 DIRECTIONAL WELL

NE 1/4, NE 1/4 SEC. 17, T5N, R62W

BONANZA CREEK ENERGY OPERATING COMPANY, LLC

WELD COUNTY, COLORADO