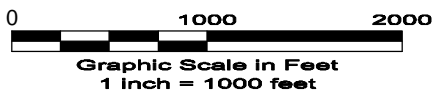
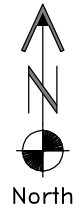
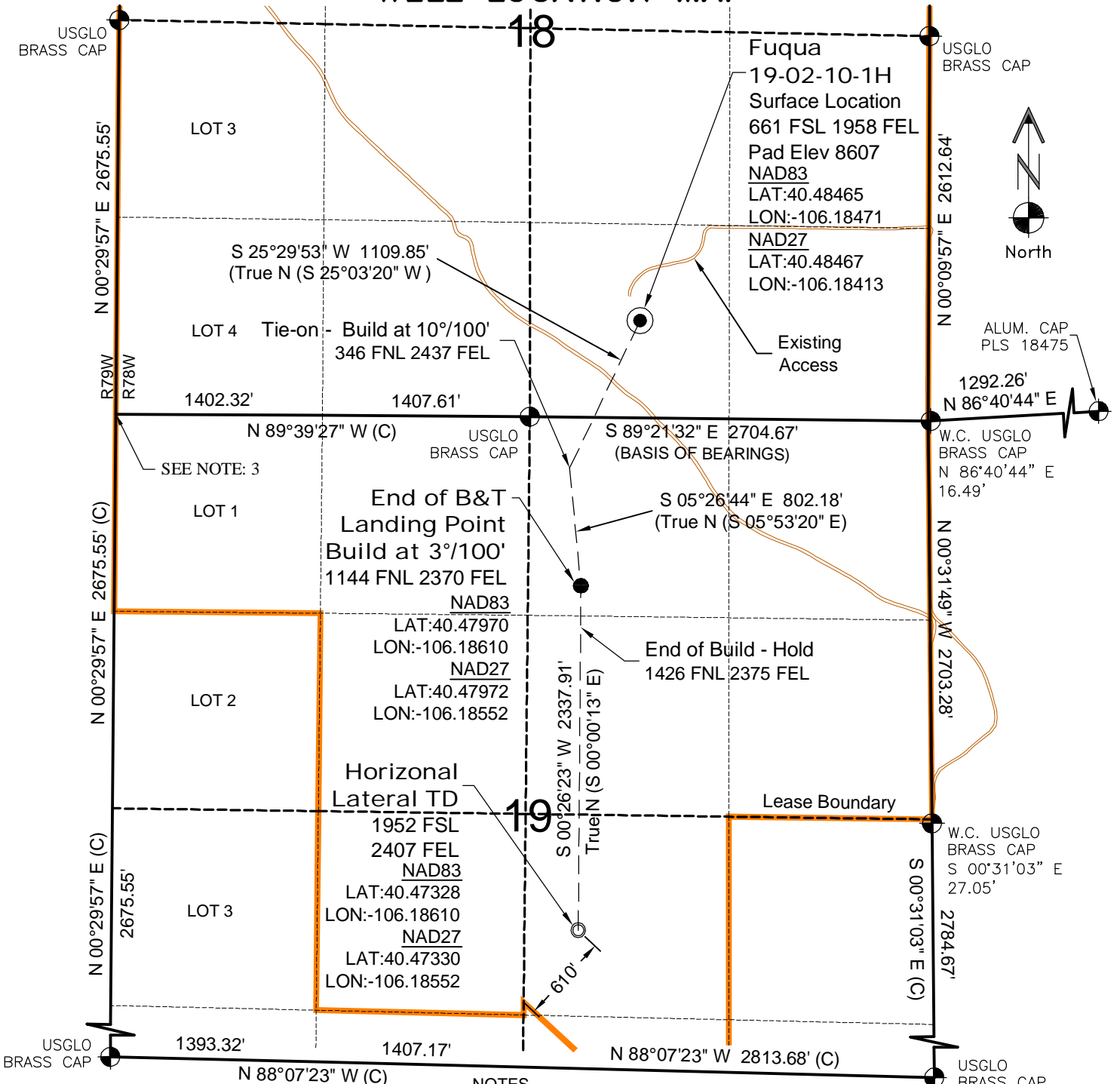


WELL LOCATION MAP



NOTES

- 1.) Horizontal and vertical datum, based on NGS control point "ANNA" with an elevation of 8208. NAVD 1988.
- 2.) All directions, distances, and dimensions shown hereon are based on coordinates from the "Colorado coordinate system of 1983 north zone" (article 52 of title 38, C.R.S.).
- 3.) All section line dimensions shown hereon are based on field measurements of existing monuments and/or physical evidence found in the field unless otherwise indicated. Refer to BLM Survey.
- 4.) Physical features shown hereon are for graphical representation only.
- 5.) See Exhibit "C1" for visible improvements within 200' of wellhead.
- 6.) Distances to nearest section lines are measured perpendicularly.
- 7.) This is not a land survey nor land survey plat.
- 8.) Date of Survey 6/1/09; Date of Drawing 5/24/11. REV 4
PDOP Reading: 2.2 Instrument Operator: DJM

SURVEYOR'S STATEMENT

The undersigned hereby states that the well location shown hereon was staked on the ground based on existing monumentation and/or physical evidence found in the field and is correct to the best of my knowledge, information and belief.



GEO SURV

LAND SURVEYING AND MAPPING
LAFAYETTE - WINTER PARK
Ph 303 666 0379 Fx 303 665 6320

LARAMIE ENERGY II LLC
FUQUA 19-02-10-1H

SL SW1/4 SE1/4 SEC.18 T6N R78W
HL TD NW1/4 SE1/4 SEC.19 T6N R78W
6th PM JACKSON COUNTY COLORADO

DWG: G:\GEO SURV\North Park\Wellplots\FUQUA\FUQUA 19-02-10-1H.dwg USER: MTC DATE: May 24, 2011 1:20pm