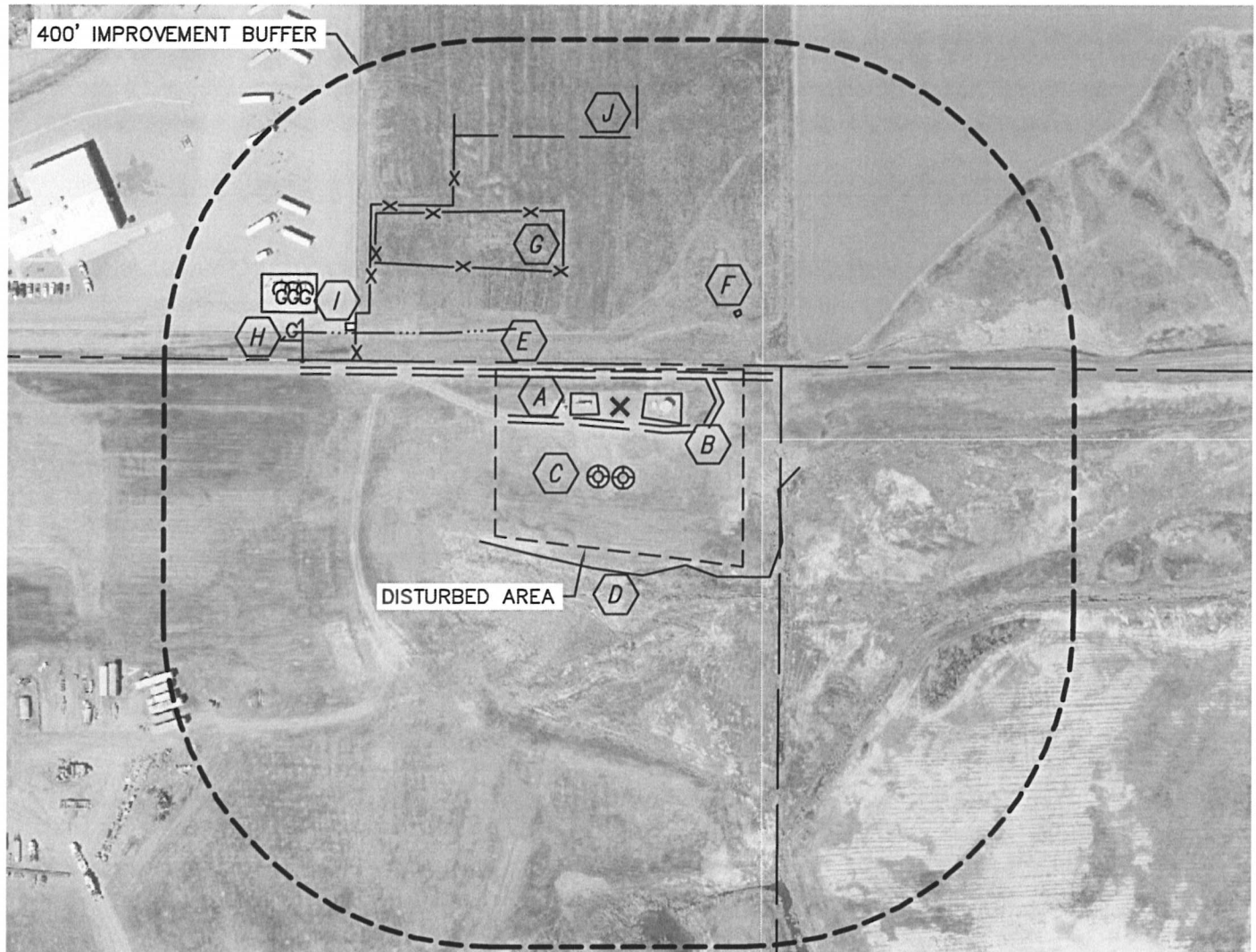


Lat40°, Inc. 1635 Foxtrail Drive, Suite 325 Loveland, CO 80538

# PRODUCTION FACILITY LOCATION DRAWING

VARRA P31-74HN, VARRA P31-76HN

SECTION: 31  
TOWNSHIP: 3N  
RANGE: 67W



## REFERENCE POINT LOCATION:

LATITUDE: 40.18982°N  
LONGITUDE: 104.93800°W  
ELEV: 4816'  
PDOP: 2.0  
DATE: 3/18/11  
OPERATOR: ADAM KELLY  
1/41/4: NW1/4NW1/4  
FNL: 52'  
FWL: 1053'  
DISTANCE TO WELL: 1243'  
ASSOCIATED NEW WELLS:  
VARRA P31-74HN, P31-76HN  
ASSOCIATED EXISTING WELLS:  
VARRA P31-4JI, P31-3JI

## IMPROVEMENTS:

- A** EX. PRODUCTION EQUIPMENT 26' W, 29' E
- B** FIELD ROAD 18' S, 35' N
- C** EX. WELL 86' S, 88' SW
- D** WET AREA 198' S, 217' SE
- E** DITCH 157' NW
- F** IRRIGATION BOX 179' NE
- G** FENCE 177' NW, 324' NW
- H** GAS LINE MARKER 387' NW
- I** FUEL TANKS 384' NW
- J** PARKING LOT 327' N

## LEGEND

**X** - REFERENCE POINT  
ALL DISTANCES ARE APPROXIMATE.

NEAREST: BUILDING 639' NW,  
PUBLIC ROAD 1040' W (CR 13), ABOVE GROUND UTILITY 974' W,  
RAILROAD 5280'+ SE, PROPERTY LINE 52' N

