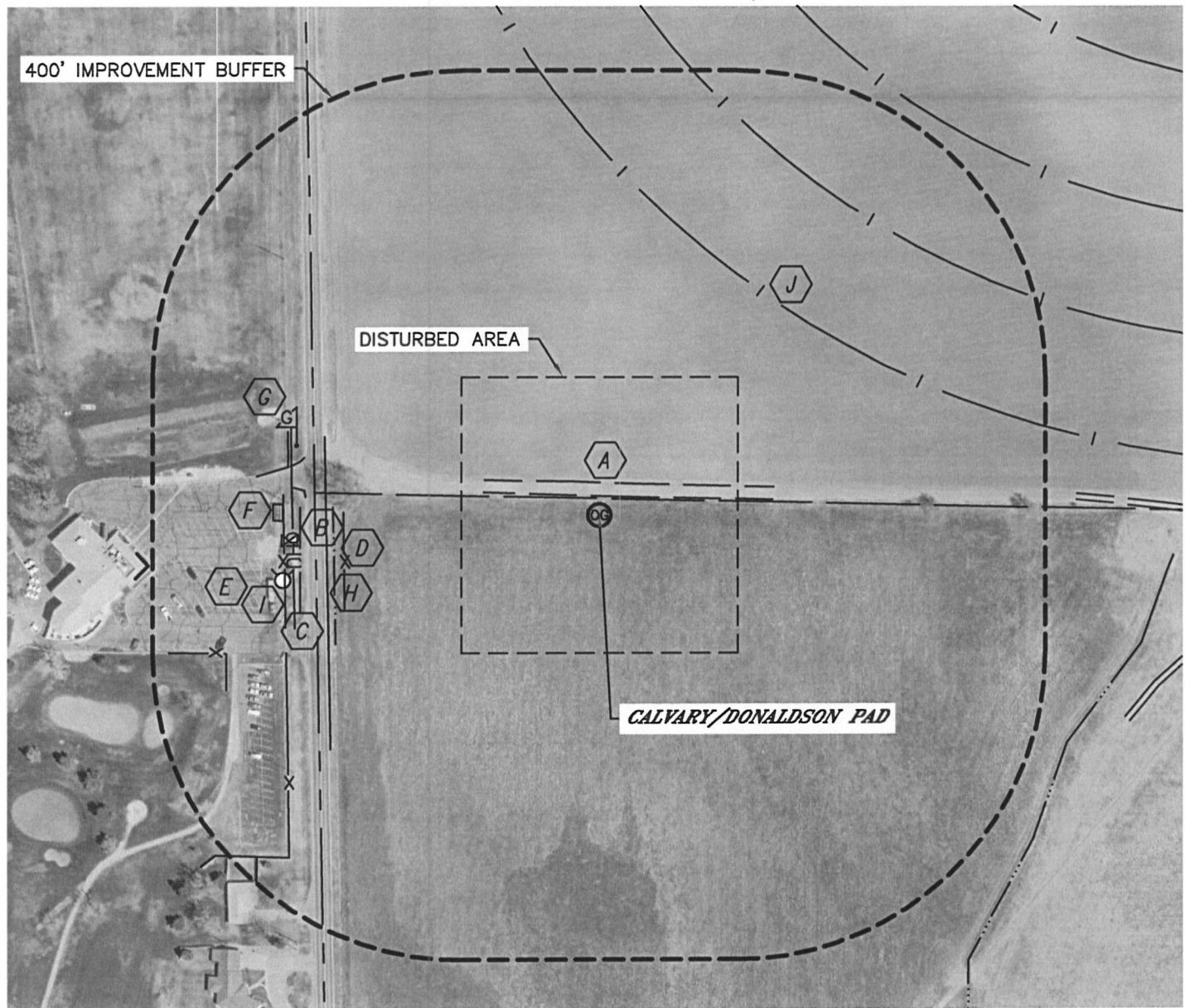


## LOCATION DRAWING

CALVARY USX EE29-03D, 04D &  
DONALDSON USX EE29-06D, 12D

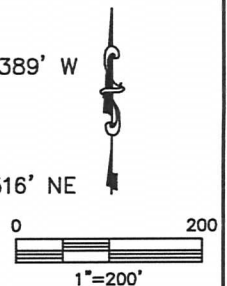
SECTION: 29  
TOWNSHIP: 7N  
RANGE: 65W



### IMPROVEMENTS:

(DISTANCES MEASURED FROM THE CALVARY USX EE29-04D LOCATION)

- |   |                                       |
|---|---------------------------------------|
| <b>A</b> FIELD ROAD 25' N                       | <b>F</b> TRASH ENCLOSURE 412' W       |
| <b>B</b> COUNTY ROAD 39 355' W                  | <b>G</b> GAS MARKER 404' NW           |
| <b>C</b> OVERHEAD UTILITY 399' W                | <b>H</b> BARROW DITCH 346' W, 389' W  |
| <b>D</b> FENCE 333' W, 411' W, 517' SW, 409' NW | <b>I</b> FIRE HYDRANT 420' SW         |
| <b>E</b> PARKING LOT 412' W                     | <b>J</b> PIVOT TRACK 359' NE, 516' NE |



NEAREST: BUILDING 589' W, PUBLIC ROAD (CR 39) 355' W,  
ABOVE GROUND UTILITY 399' W, RAILROAD 5280'+, PROPERTY LINE 22' N