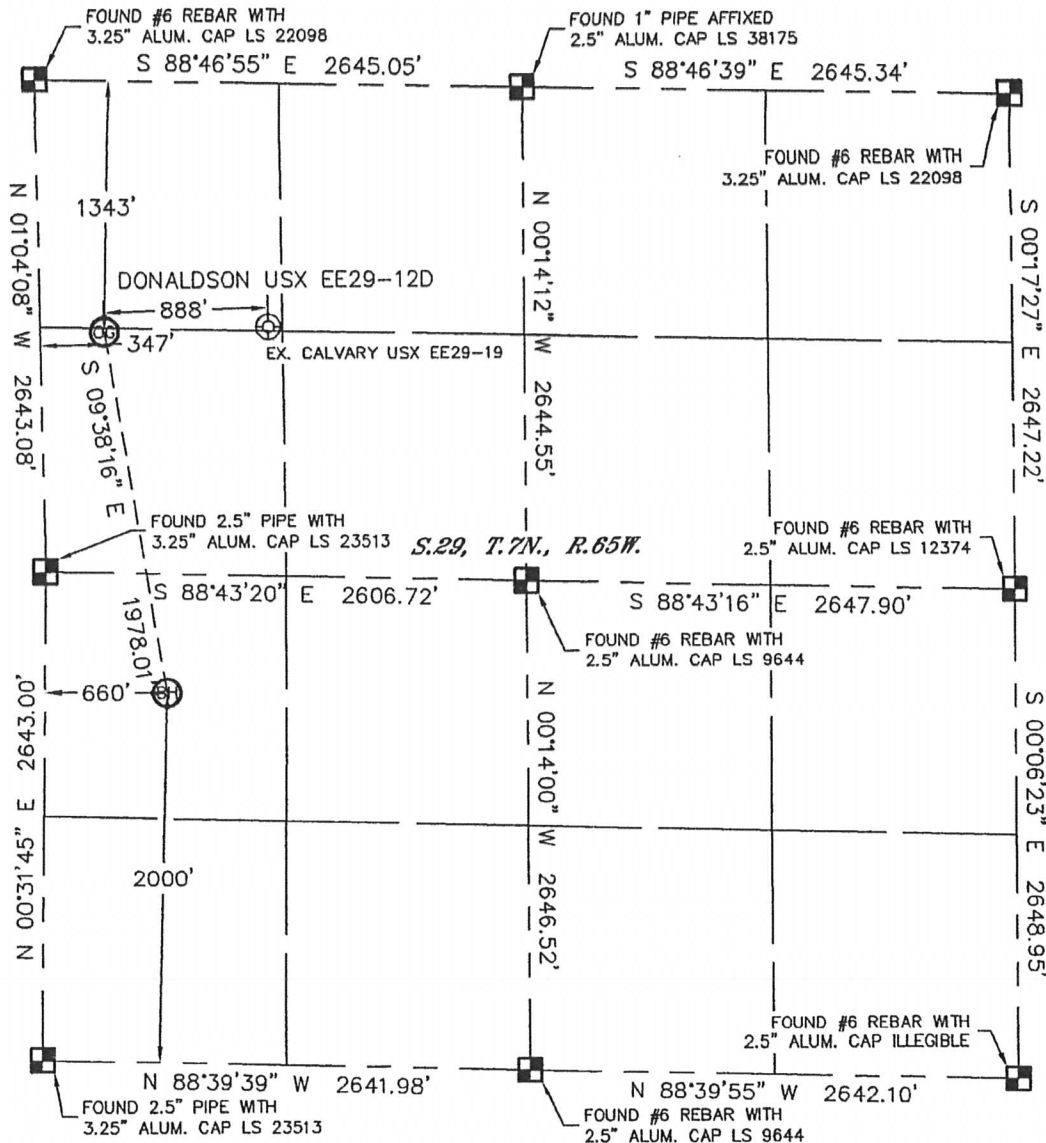


# WELL LOCATION CERTIFICATE

THIS MAP DOES NOT REPRESENT A BOUNDARY SURVEY

SECTION: 29  
TOWNSHIP: 7N  
RANGE: 65W



In accordance with a request from Mike Rodine with Noble Energy Inc., Lat40°, Inc. has determined the surface location of the DONALDSON USX EE29-12D to be 1343' from the NORTH line and 347' from the WEST line and the bottom hole to be 2000' from the SOUTH line and 660' from the WEST line as measured at right angles from the section lines of Section 29, Township 7 North, Range 65 West of the Sixth Principal Meridian, County of Weld, State of Colorado.

I hereby state that this Well Location Certificate was prepared by me, or under my direct supervision, that the fieldwork was completed on 3/29/11, for and on behalf of Noble Energy Inc. That this is not a Land Survey Plat or an Improvement Survey Plat, and that it is not to be relied upon for establishment of fence, building, or other future improvement lines.

## NOTE:

- 1) Bearings shown are Grid Bearings of the Colorado State Plane Coordinate System, North Zone, North American Datum 1983/2007. The lineal dimensions as contained herein are based upon the "U.S. Survey Foot."
- 2) Ground elevations are based on an observed GPS elevation (NAVD 1988 DATUM).
- 3) NEAREST EXISTING WELL: CALVARY USX EE29-19 888'
- 4) IMPROVEMENTS: See LOCATION DRAWING for all visible improvements within 400' of disturbed area.
- 5) SURFACE USE: CROP FIELD
- 6) INSTRUMENT OPERATOR: ADAM KELLY

SURFACE LOCATION  
LATITUDE: 40.54955°N  
LONGITUDE: 104.69532°W  
PDOP: 1.5  
ELEV: 4924'  
1/4, 1/4: SW1/4NW1/4  
NEAREST PROPERTY LINE: 22' NORTH

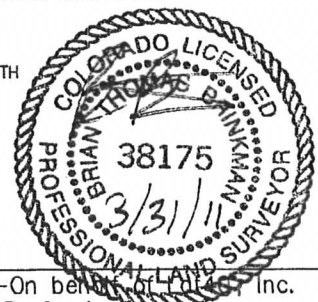
BOTTOM HOLE  
LATITUDE: 40.54419°N  
LONGITUDE: 104.69419°W

## NOTE

According to Colorado law, you must commence any legal action based upon any defect in this W.L.C. within three years after you discover such defect. In no event, may any action based upon any defect in this survey be commenced more than ten years after the date of the certificate shown hereon. (13-80-105 C.R.S.)

## LEGEND

- = ALIQUOT MONUMENT AS DESCRIBED
- = CALCULATED POSITION



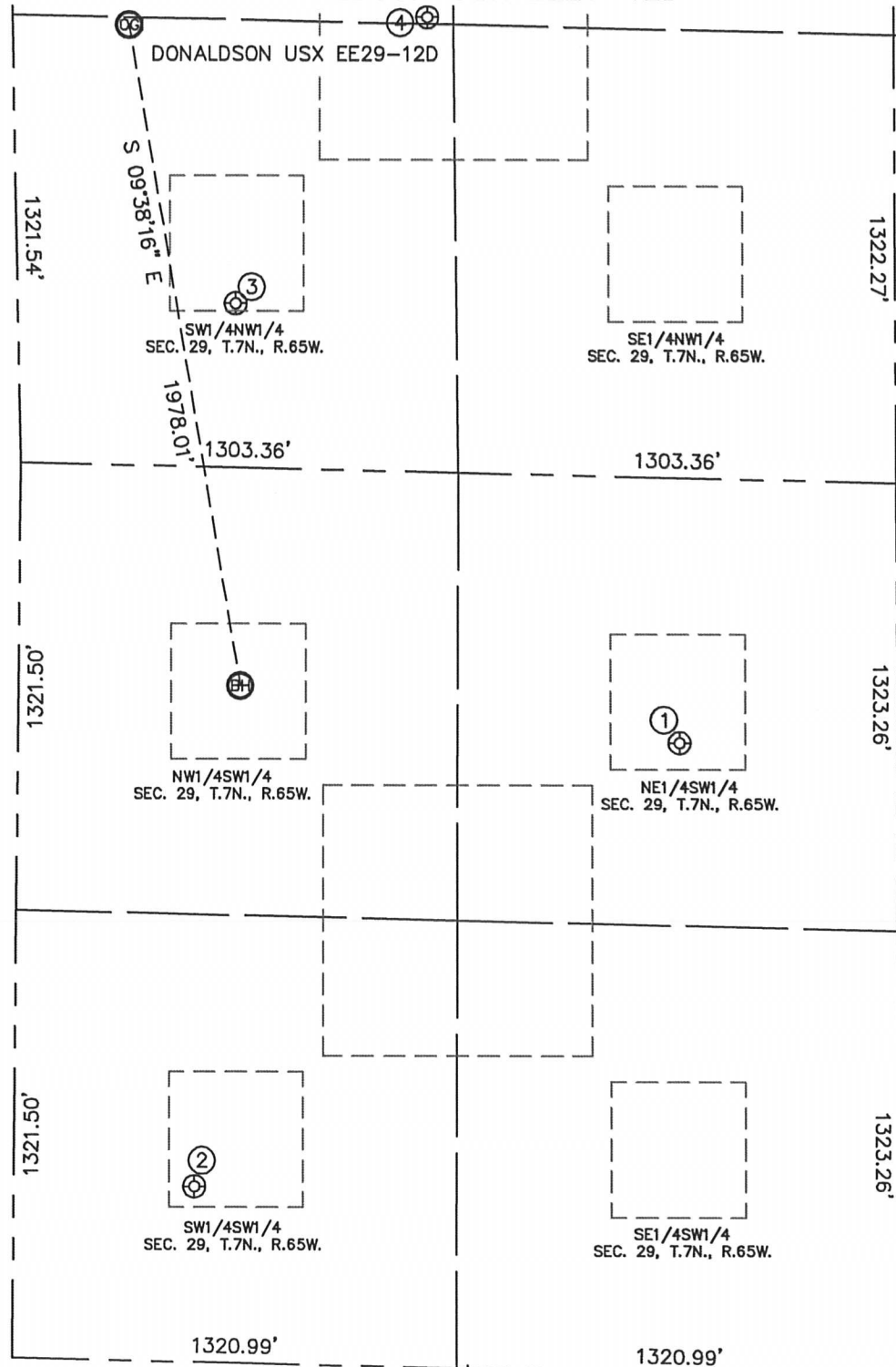
Brian T. Brinkman—On behalf of Lat40°, Inc.  
Colorado Licensed Professional  
Land Surveyor No. 38175

PROJECT#: 2011064

# SITE SKETCH

SECTION: 29  
TOWNSHIP: 7N  
RANGE: 65W

DONALDSON USX EE29-12D



①

NORTHERN PROP 23-29  
NE1/4SW1/4  
1863' FSL  
1968' FWL  
LAT-40.54369°N  
LONG-104.68950°W  
PDOP: 1.8  
ELEV: 4894'

②

NORTHERN PROP 14-29  
SW1/4SW1/4  
518' FSL  
536' FWL  
LAT-40.54013°N  
LONG-104.69474°W  
PDOP: 2.5  
ELEV: 4883'

③

2059-USX EE29-5  
SW1/4NW1/4  
2158' FNL  
648' FWL  
LAT-40.54728°N  
LONG-104.69421°W  
PDOP: 2.4  
ELEV: 4934'

④

CALVARY USX EE29-19  
NW1/4NW1/4  
1301' FNL  
1235' FWL  
LAT-40.54959°N  
LONG-104.69213°W  
PDOP: 1.6  
ELEV: 4922'

