

1625 Broadway  
Suite 2000  
Denver, CO 80202  
  
Tel: 303.228.4000  
Fax: 303.228.4280  
www.nobleenergyinc.com



May 26, 2011

Colorado Oil and Gas Conservation Commission  
The Chancery Building  
1120 Lincoln Street, Suite 801  
Denver, CO 80203

Attn: Mr. David Neslin, Director

RE: Dinner PC E14-65HN  
Niobrara New Drill  
Township 6 North, Range 65 West, 6th P.M.  
Section 14: NW/4SW/4: 2544' FSL & 69' FWL (Surface Location)  
Section 14: SW/4NW/4: 2680' FNL & 752' FWL (Beginning of Lateral)  
Section 14: SE/4NE/4: 2565' FNL & 535' FEL (Bottom Hole Location)  
Weld County, Colorado

Mr. Neslin:

Noble Energy, Inc. ("NEI") is planning to drill the captioned boundary well in accordance with the provisions of COGCC Rule 318A.e.

NEI's proposed wellbore spacing unit consists of the N/2S/2 & S/2N/2, Sec. 14, T6N, R65W, creating a 320-acre wellbore spacing unit for the Niobrara formation. NEI is the only owner within the proposed wellbore spacing unit, therefore NEI hereby attests that no notice letters are required under COGCC Rule 318A.e.(6).

Enclosed are copies of the following documents to assist you in your review and approval of NEI's proposed APD for the captioned well:

- Map illustrating the proposed wellbore spacing unit and number of Codell/Niobrara/J Sand wells located within the existing 160-acre governmental quarter section(s) (SE/4) to be less than eight (8) in accordance with COGCC Rule 318A.f.
- Plat illustrating proposed wellbore spacing unit on existing location plat.

Thank you for your attention to the enclosed. NEI respectfully requests that the COGCC review the enclosed information and approve the Application for Permit to Drill the captioned well.

Sincerely,

Justin Garrett  
Regulatory Specialist  
Noble Energy Inc.

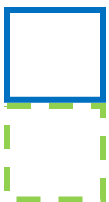
# Dinner PC E14-65HN

## Proposed Spacing Unit - Noble Energy, Inc

### S/2N/2 & N/2S/2 Section 14, Township 6 North, Range 65 West



#### Legend



Proposed 320 acre spacing unit



Bottom Hole Location

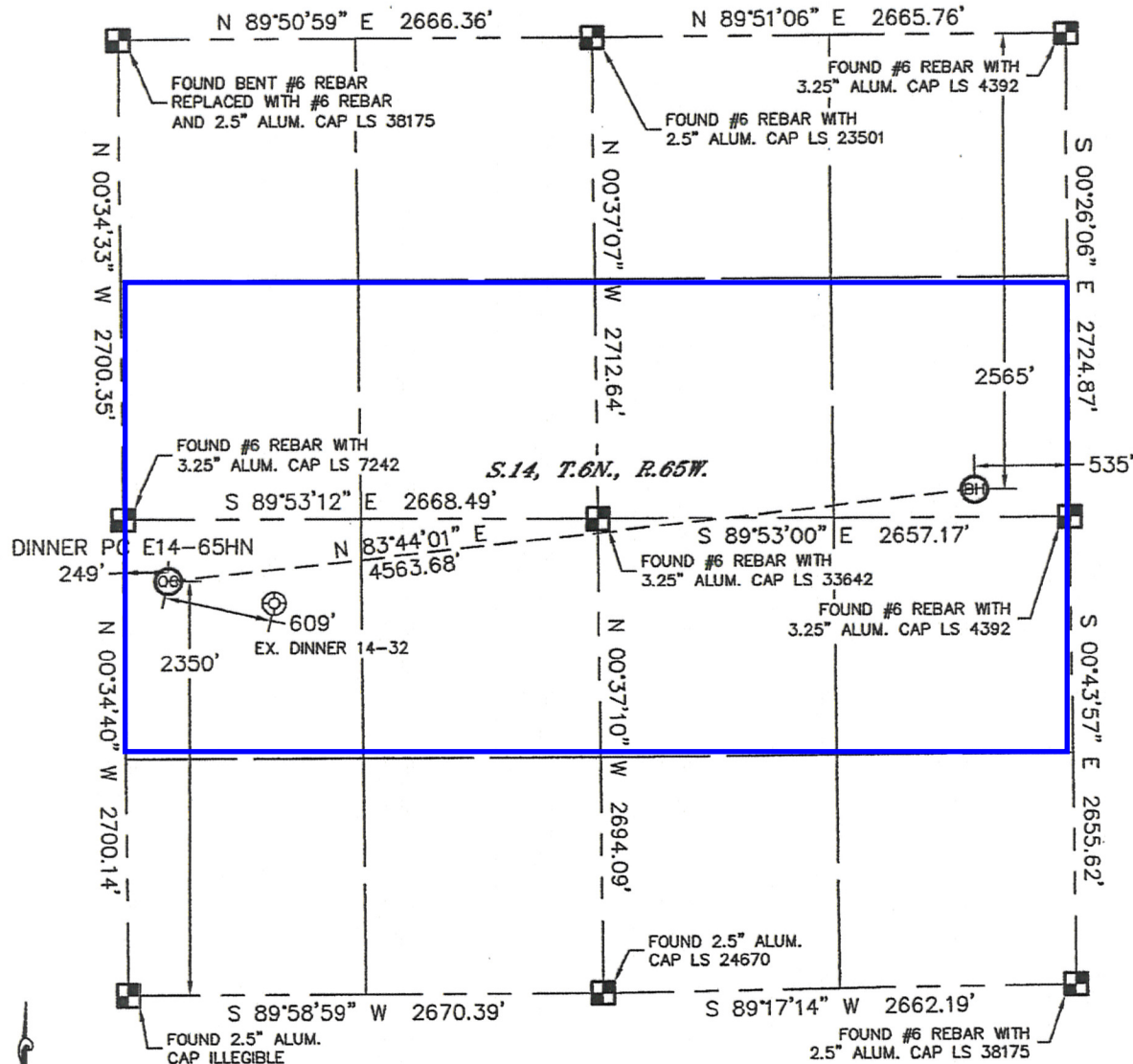
Bottom Hole Located N/2, Sec. 14, T6N, R65W

**The governmental ¼ Section has less than 8 bottom hole wells producing from the Codell, Niobrara, and J-Sand formations.**

# WELL LOCATION CERTIFICATE

THIS MAP DOES NOT REPRESENT A BOUNDARY SURVEY

SECTION: 14  
TOWNSHIP: 6N  
RANGE: 65W



In accordance with a request from Ryan Antonio with Noble Energy Inc. Lat40°, Inc. has determined the surface location of the DINNER PC E14-65HN to be 2350' from the SOUTH line and 249' from the WEST line and the bottom hole to be 2565' from the NORTH line and 535' from the EAST line as measured at right angles from the section lines of Section 14, Township 6 North, Range 65 West of the Sixth Principal Meridian, County of Weld, State of Colorado.

I hereby state that this Well Location Certificate was prepared by me, or under my direct supervision, that the fieldwork was completed on 3/17/11, for and on behalf of Noble Energy Inc. That this is not a Land Survey Plat or an Improvement Survey Plat, and that it is not to be relied upon for establishment of fence, building, or other future improvement lines.

## NOTE:

- 1) Bearings shown are Grid Bearings of the Colorado State Plane Coordinate System, North Zone, North American Datum 1983/2007. The lineal dimensions as contained herein are based upon the "U.S. Survey Foot."
- 2) Ground elevations are based on an observed GPS elevation (NAVD 1988 DATUM).
- 3) NEAREST EXISTING WELL: DINNER 14-32, 609'
- 4) IMPROVEMENTS: See LOCATION DRAWING for all visible improvements within 400' of disturbed area.
- 5) SURFACE USE: CROP FIELD
- 6) INSTRUMENT OPERATOR: ADAM KELLY

## NOTE

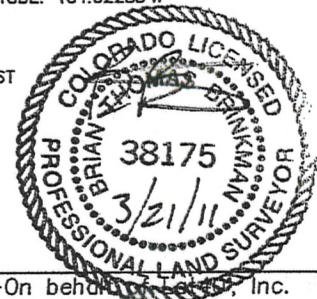
According to Colorado law, you must commence any legal action based upon any defect in this W.L.C. within three years after you discover such defect. In no event, may any action based upon any defect in this survey be commenced more than ten years after the date of the certificate shown hereon. (13-80-105 C.R.S.)

## LEGEND

- = ALIQUOT MONUMENT AS DESCRIBED
- = CALCULATED POSITION

SURFACE LOCATION  
LATITUDE: 40.48526°N  
LONGITUDE: 104.63918°W  
PDOP: 1.5  
ELEV: 4719'  
1/4, 1/4: NW1/4SW1/4  
NEAREST PROPERTY LINE: 249' WEST

BOTTOM HOLE  
LATITUDE: 40.48650°N  
LONGITUDE: 104.62285°W



Brian T. Brinkman—On behalf of Lat40°, Inc.  
Colorado Licensed Professional  
Land Surveyor No. 38175

PROJECT#: 2011067