

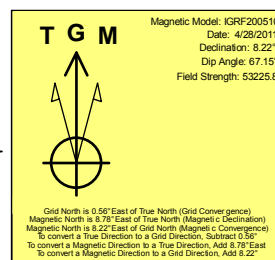
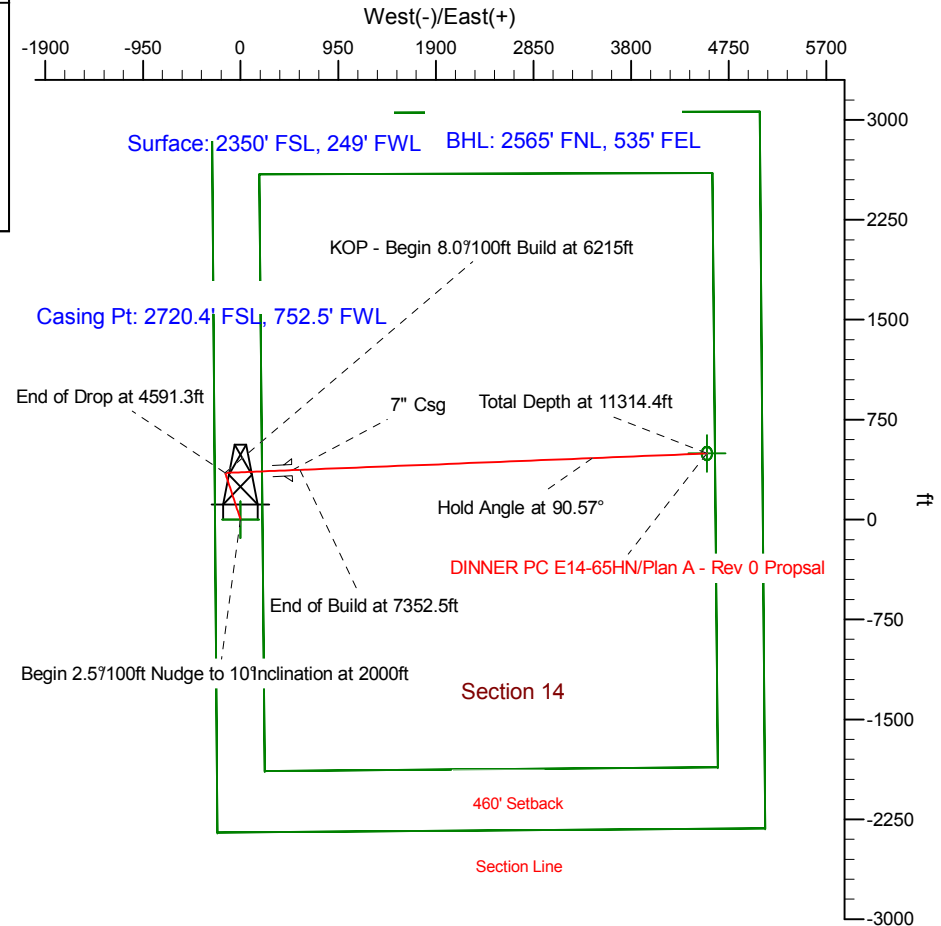
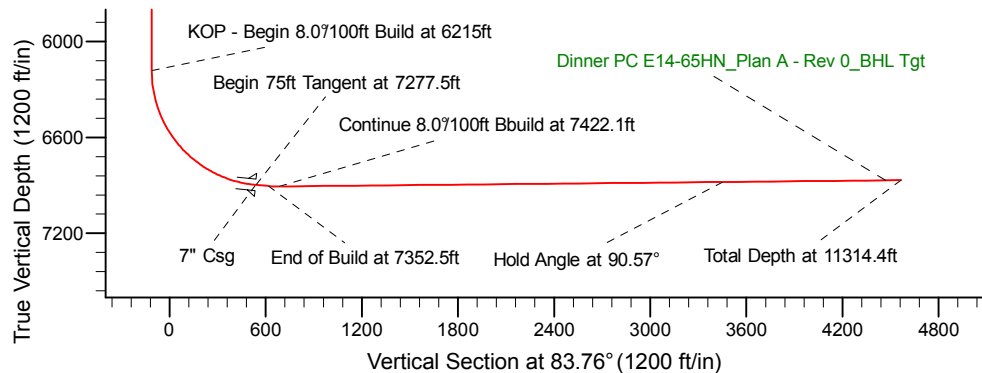
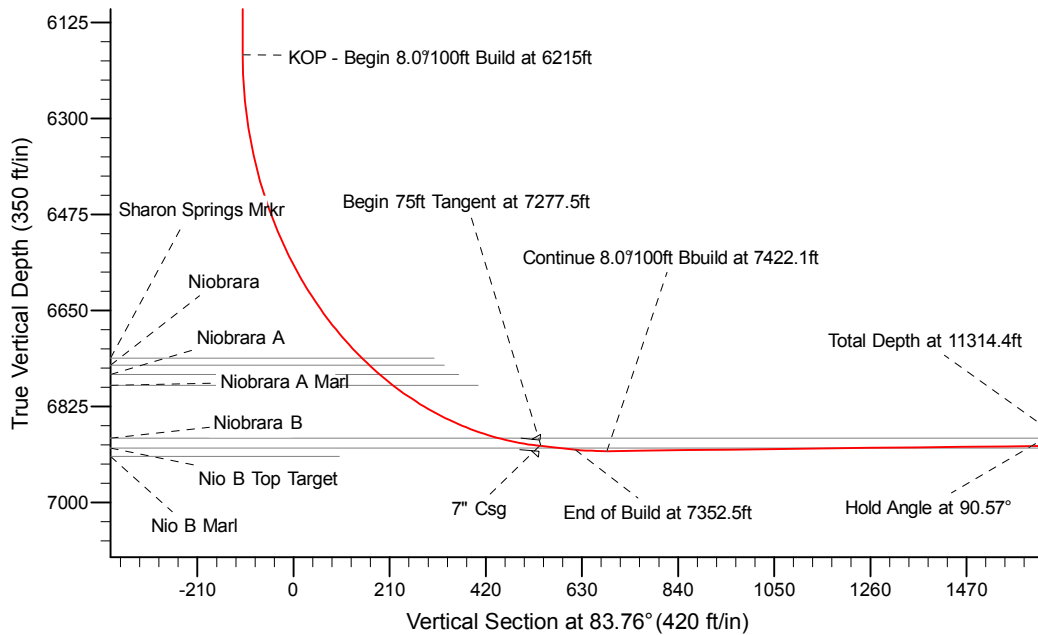
Project: Weld County Colorado (NAD 83)
 Site: Sec.14, T6N, R65W
 Well: DINNER PC E14-65HN
 Wellbore: Plan A - Rev 0 (PERMITTING PLAN ONLY)
 Design: Plan A - Rev 0 Proposal

Noble Energy

HALLIBURTON
 Sperry Drilling

SECTION DETAILS

Sec	MD	Inc	Azi	TVD	+N/-S	+E/-W	Dleg	TFace	VSecl	Target
1	0.0	0.00	0.00	0.0	0.0	0.0	0.00	0.00	0.0	
2	2000.0	0.00	0.00	2000.0	0.0	0.0	0.00	0.00	0.0	
3	2400.1	10.00	336.80	2398.1	32.0	-13.7	2.50	336.80	-10.2	
4	4191.2	10.00	336.80	4161.9	318.0	-136.3	0.00	0.00	-100.9	
5	4591.3	0.00	0.00	4560.0	350.0	-150.0	2.50	180.00	-111.1	
6	6215.0	0.00	0.00	6183.7	350.0	-150.0	0.00	0.00	-111.1	
7	7277.5	85.00	88.21	6897.2	370.4	503.5	8.00	88.21	540.7	
8	7352.5	85.00	88.21	6903.7	372.8	578.1	0.00	0.00	615.2	
9	7422.1	90.57	88.21	6906.4	374.9	647.6	8.00	0.00	684.6	
10	11314.4	90.57	88.22	6867.6	496.3	4537.8	0.00	67.52	4564.9	DINNER PC E14-65HN_Plan A - Rev 0_BHL Tgt-



WELL DETAILS: DINNER PC E14-65HN(NAD83 Geodetic System)			
Northing	Ground Level:	4719.0	Longitude
433055.48	Easting	Latitude	104°38' 21.048 W
987383.90	40°29' 6.936 N		
Plan: Plan A - Rev 0 Proposal (DINNER PC E14-65HN/Plan A - Rev 0 (PERMITTING PLAN ONLY))			
Created By: Erasmo Mendoza		Date: 12:45, April 29 2011	
OK to submit with 2A as per Noble Drilling			
5/3/2011			