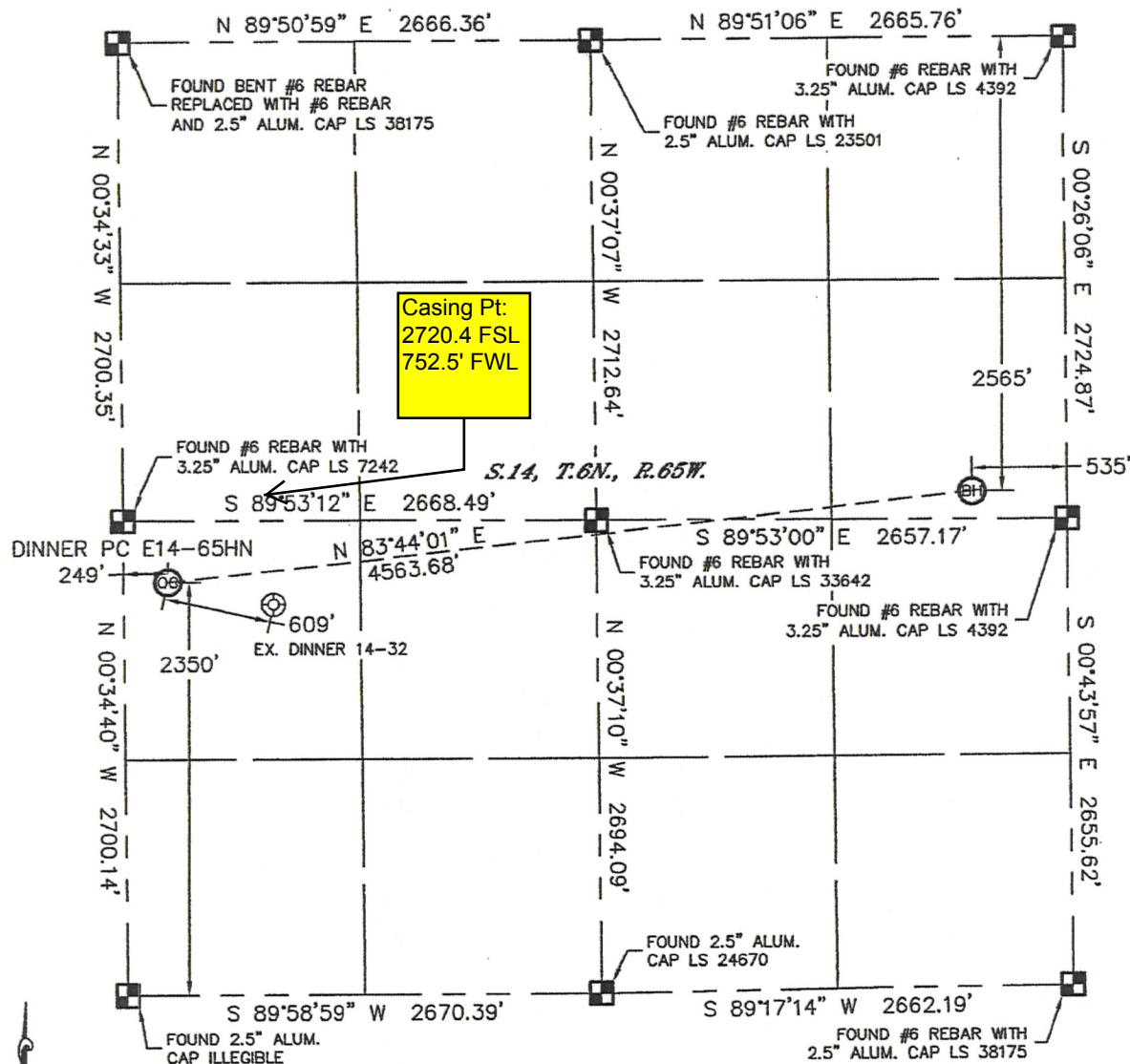


WELL LOCATION CERTIFICATE

THIS MAP DOES NOT REPRESENT A BOUNDARY SURVEY

SECTION: 14
TOWNSHIP: 6N
RANGE: 65W



In accordance with a request from Ryan Antonio with Noble Energy Inc. Lat40°, Inc. has determined the surface location of the DINNER PC E14-65HN to be 2350' from the SOUTH line and 249' from the WEST line and the bottom hole to be 2565' from the NORTH line and 535' from the EAST line as measured at right angles from the section lines of Section 14, Township 6 North, Range 65 West of the Sixth Principal Meridian, County of Weld, State of Colorado.

I hereby state that this Well Location Certificate was prepared by me, or under my direct supervision, that the fieldwork was completed on 3/17/11, for and on behalf of Noble Energy Inc. That this is not a Land Survey Plat or an Improvement Survey Plat, and that it is not to be relied upon for establishment of fence, building, or other future improvement lines.

NOTE:

- 1) Bearings shown are Grid Bearings of the Colorado State Plane Coordinate System, North Zone, North American Datum 1983/2007. The lineal dimensions as contained herein are based upon the "U.S. Survey Foot."
- 2) Ground elevations are based on an observed GPS elevation (NAVD 1988 DATUM).
- 3) NEAREST EXISTING WELL: DINNER 14-32, 609'
- 4) IMPROVEMENTS: See LOCATION DRAWING for all visible improvements within 400' of disturbed area.
- 5) SURFACE USE: CROP FIELD
- 6) INSTRUMENT OPERATOR: ADAM KELLY

NOTE

According to Colorado law, you must commence any legal action based upon any defect in this W.L.C. within three years after you discover such defect. In no event, may any action based upon any defect in this survey be commenced more than ten years after the date of the certificate shown hereon. (13-80-105 C.R.S.)

LEGEND

- = ALIQUOT MONUMENT AS DESCRIBED
- = CALCULATED POSITION

SURFACE LOCATION
LATITUDE: 40.48526°N
LONGITUDE: 104.63918°W
PDOP: 1.5
ELEV: 4719'
1/4, 1/4: NW1/4SW1/4
NEAREST PROPERTY LINE: 249' WEST

BOTTOM HOLE
LATITUDE: 40.48650°N
LONGITUDE: 104.62285°W



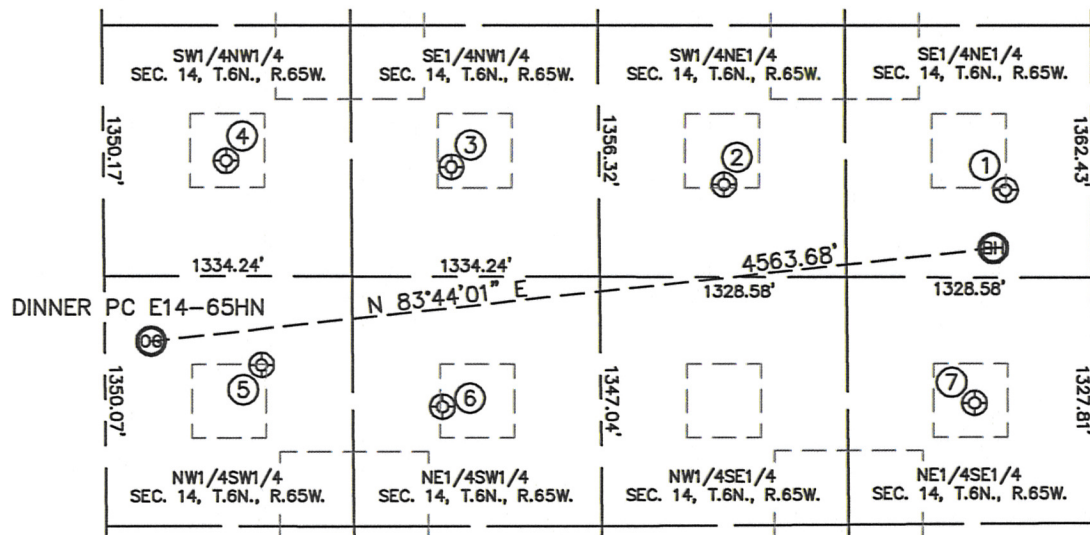
Brian T. Brinkman—On behalf of Noble Energy Inc.
Colorado Licensed Professional
Land Surveyor No. 38175

PROJECT#: 2011067

SITE SKETCH

DINNER PC E14-65HN

SECTION: 14
TOWNSHIP: 6N
RANGE: 65W



- | | | | |
|---|--|--|--|
| <p>①</p> <p>DINNER 14-14
SE1/4NE1/4
2252' FNL
469' FWL
LAT-40.48736°N
LONG-104.62261°W
PDOP:1.2
ELEV: 4737'</p> | <p>②</p> <p>DINNER 14-13
SW1/4NE1/4
2217' FNL
1985' FWL
LAT-40.48748°N
LONG-104.62806°W
PDOP:1.9
ELEV: 4737'</p> | <p>③</p> <p>DINNER 14-2
SE1/4NW1/4
2118' FNL
1873' FWL
LAT-40.48779°N
LONG-104.63334°W
PDOP:1.7
ELEV: 4735'</p> | <p>④</p> <p>DINNER E 14-5
SW1/4NW1/4
2080' FNL
661' FWL
LAT-40.48791°N
LONG-104.63770°W
PDOP:1.3
ELEV: 4721'</p> |
| <p>⑤</p> <p>DINNER 14-32
NW1/4SW1/4
2220' FSL
843' FWL
LAT-40.48489°N
LONG-104.63704°W
PDOP:1.5
ELEV: 4717'</p> | <p>⑥</p> <p>DINNER 14-31
NE1/4SW1/4
1993' FSL
1814' FWL
LAT-40.48424°N
LONG-104.63355°W
PDOP:1.2
ELEV: 4715'</p> | <p>⑦</p> <p>SCHWSOW E 14-09
NE1/4SE1/4
1985' FSL
645' FWL
LAT-40.48421°N
LONG-104.62324°W
PDOP:1.2
ELEV: 4710'</p> | |

