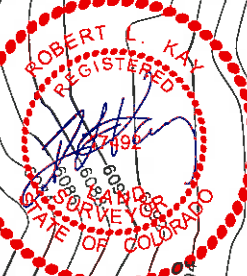


WILLIAMS PRODUCTION RMT COMPANY

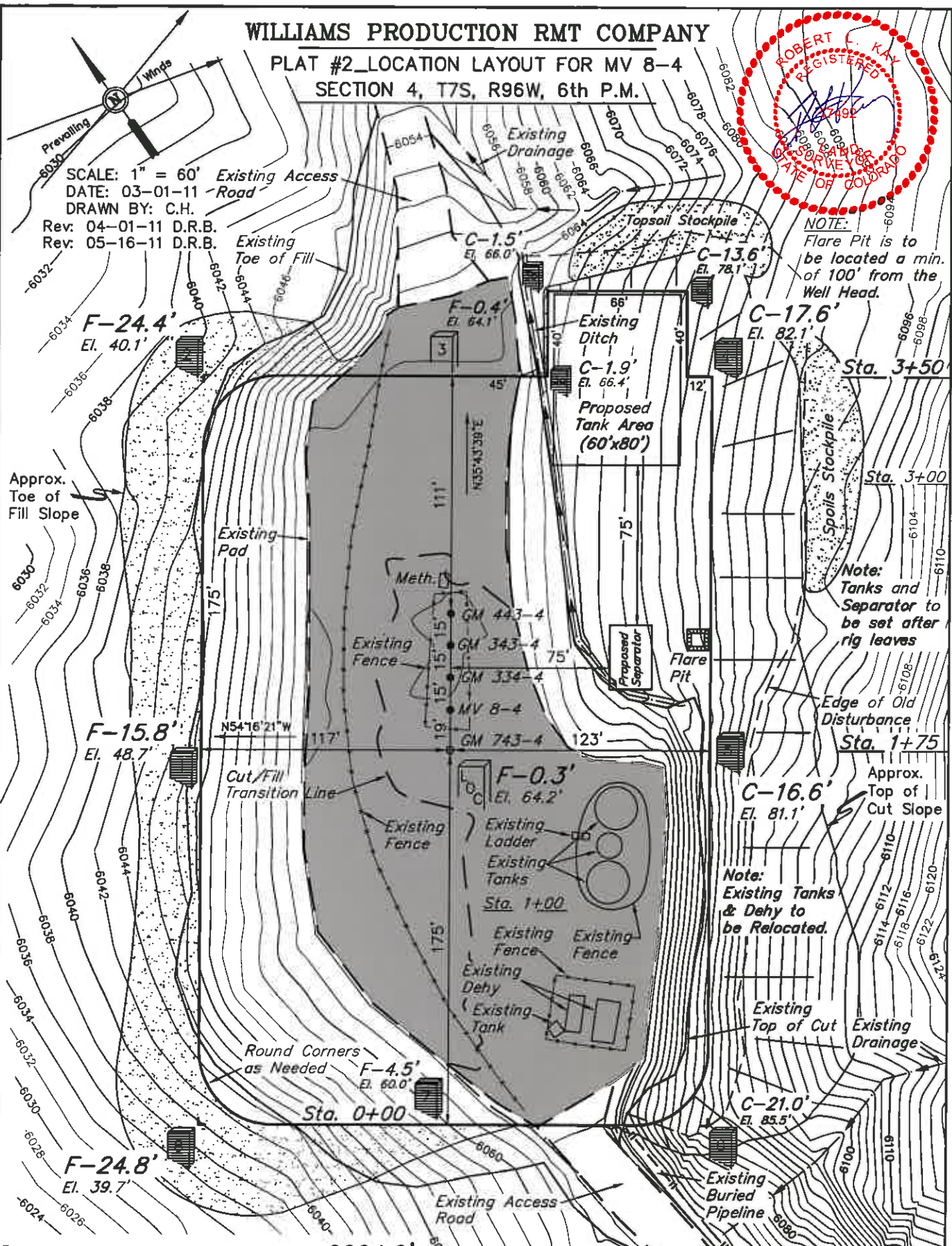
PLAT #2 LOCATION LAYOUT FOR MV 8-4

SECTION 4, T7S, R96W, 6th P.M.



SCALE: 1" = 60'
DATE: 03-01-11
DRAWN BY: C.H.
Rev: 04-01-11 D.R.B.
Rev: 05-16-11 D.R.B.

NOTE:
Flare Pit is to be located a min. of 100' from the Well Head.



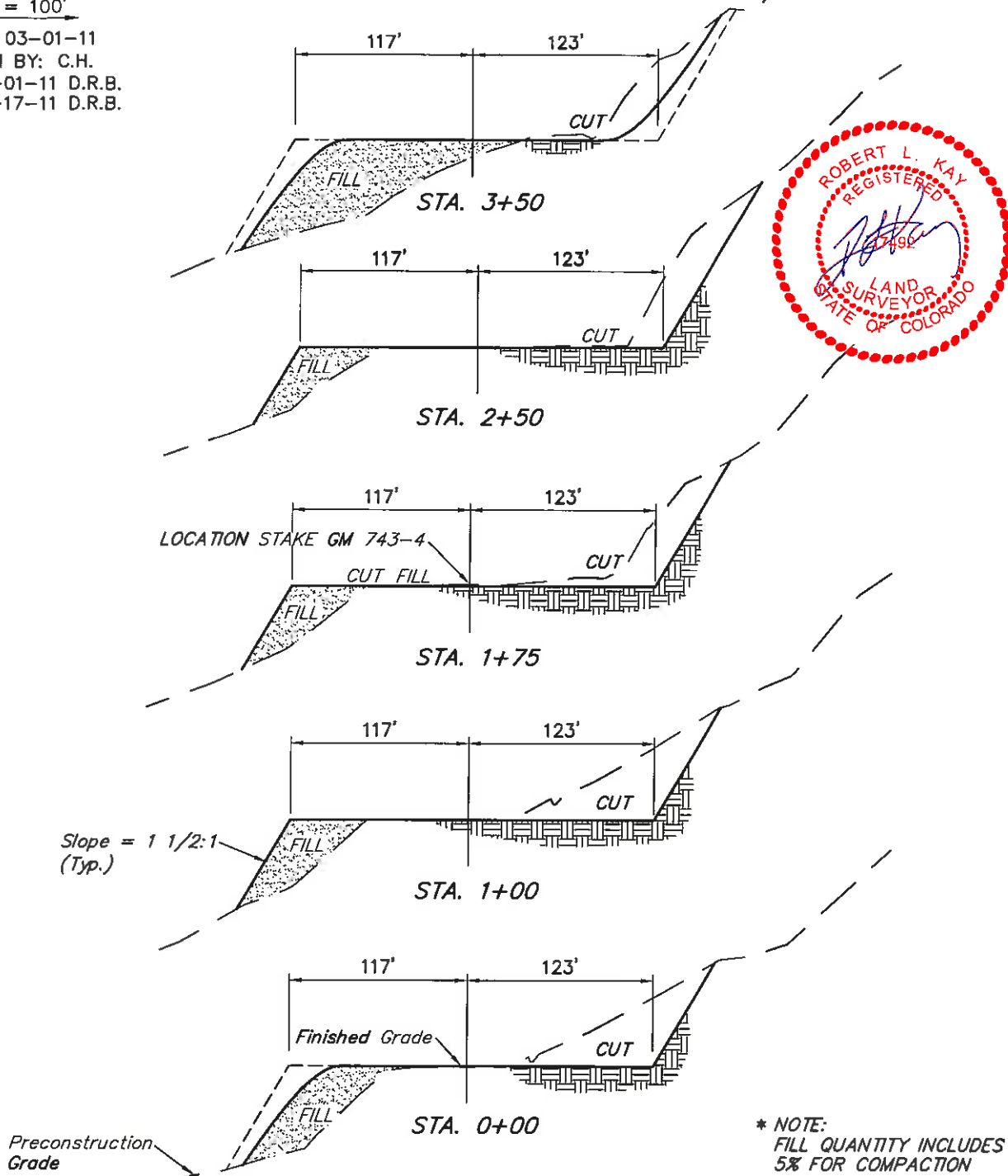
Elev. Ungraded Ground At Loc. Stake = 6064.2'
FINISHED GRADE ELEV. AT LOC. STAKE = 6064.5'

UINTAH ENGINEERING & LAND SURVEYING
85 So. 200 East • Vernal, Utah 84078 • (435) 789-1017

1" = 40'
X-Section
Scale
1" = 100'

DATE: 03-01-11
DRAWN BY: C.H.
Rev: 04-01-11 D.R.B.
Rev: 05-17-11 D.R.B.

WILLIAMS PRODUCTION RMT COMPANY
PLAT #3_TYPICAL CROSS SECTION FOR MV 8-4
SECTION 4, T7S, R96W, 6th P.M.



APPROXIMATE YARDAGES

(6") Topsoil Stripping = 780 Cu. Yds.
(New Construction Only)
Remaining Location = 15,610 Cu. Yds.
TOTAL CUT = 16,390 CU.YDS.
FILL = 14,350 CU.YDS.

EXCESS MATERIAL = 2,040 Cu. Yds.
Topsoil = 780 Cu. Yds.

EXCESS UNBALANCE = 1,260 Cu. Yds.
(After Interim Rehabilitation)

UINTAH ENGINEERING & LAND SURVEYING
85 So. 200 East • Vernal, Utah 84078 • (435) 789-1017

* NOTE:
FILL QUANTITY INCLUDES
5% FOR COMPACTION