

---

# **LARAMIE ENERGY II LLC EBUSINESS**

---

**SAVAGE 18-08C  
WILDCAT  
Garfield County , Colorado**

**Cement Surface Casing**  
**11-Nov-2010**

**Post Job Report**

### The Road to Excellence Starts with Safety

<b>Sold To #:</b> 344919		<b>Ship To #:</b> 2818709		<b>Quote #:</b>		<b>Sales Order #:</b> 7765282	
<b>Customer:</b> LARAMIE ENERGY II LLC EBUSINESS				<b>Customer Rep:</b> Claussen, Kelly			
<b>Well Name:</b> SAVAGE			<b>Well #:</b> 18-08C			<b>API/UWI #:</b> 05-045-19140	
<b>Field:</b> WILDCAT		<b>City (SAP):</b> Rifle		<b>County/Parish:</b> Garfield		<b>State:</b> Colorado	
<b>Lat:</b> N 39.442 deg. OR N 39 deg. 26 min. 31.128 secs.				<b>Long:</b> W 107.919 deg. OR W -108 deg. 4 min. 51.071 secs.			
<b>Contractor:</b> Precision Drilling Corp.			<b>Rig/Platform Name/Num:</b> Precision 706				
<b>Job Purpose:</b> Cement Surface Casing							
<b>Well Type:</b> Development Well			<b>Job Type:</b> Cement Surface Casing				
<b>Sales Person:</b> METLI, MARSHALL			<b>Srvc Supervisor:</b> MAGERS, MICHAEL			<b>MBU ID Emp #:</b> 339439	

### Job Personnel

HES Emp Name	Exp Hrs	Emp #	HES Emp Name	Exp Hrs	Emp #	HES Emp Name	Exp Hrs	Emp #
BORSZICH, STEPHEN A	2.5	412388	HAMMOND, ANSON Perry	2.5	421370	MAGERS, MICHAEL Gerard	2.5	339439
SMITH, CHRISTOPHER Scott	2.5	452619						

### Equipment

HES Unit #	Distance-1 way	HES Unit #	Distance-1 way	HES Unit #	Distance-1 way	HES Unit #	Distance-1 way
10248057	85 mile	10867094	85 mile	10872429	85 mile	10897925	85 mile
11259886	85 mile	11360883	85 mile				

### Job Hours

Date	On Location Hours	Operating Hours	Date	On Location Hours	Operating Hours	Date	On Location Hours	Operating Hours
11/11/2010	2.5	1.0						

<b>TOTAL</b>	Total is the sum of each column separately							
--------------	--	--	--	--	--	--	--	--

### Job

Formation Name	Top	Bottom	Called Out	Date	Time	Time Zone
Formation Depth (MD)			On Location	11 - Nov - 2010	10:45	MST
Form Type		BHST	Job Started	11 - Nov - 2010	14:30	MST
Job depth MD	1054.5 ft	Job Depth TVD	Job Completed	11 - Nov - 2010	16:07	MST
Water Depth		Wk Ht Above Floor	Departed Loc	11 - Nov - 2010	16:58	MST
Perforation Depth (MD)	From	To		11 - Nov - 2010	18:30	MST

### Well Data

Description	New / Used	Max pressure psig	Size in	ID in	Weight lbm/ft	Thread	Grade	Top MD ft	Bottom MD ft	Top TVD ft	Bottom TVD ft
12 1/4" Open Hole				12.25				.	1050.		
8 5/8" Surface Casing	Unknown		8.625	7.921	32.			.	1050.		

### Sales/Rental/3<sup>rd</sup> Party (HES)

Description	Qty	Qty uom	Depth	Supplier
PLUG,CMTG,TOP,8 5/8,HWE,7.20 MIN/8.09 MA	1	EA		
PORT. DAS W/CEMWIN;ACQUIRE W/HES, ZI	1	JOB		
ADC (AUTO DENSITY CTRL) SYS, /JOB,ZI	1	JOB		

### Tools and Accessories

Type	Size	Qty	Make	Depth	Type	Size	Qty	Make	Depth	Type	Size	Qty	Make
Guide Shoe					Packer					Top Plug	8.625	1	HES
Float Shoe					Bridge Plug					Bottom Plug			
Float Collar					Retainer					SSR plug set			
Insert Float										Plug Container	8.625	1	HES
Stage Tool										Centralizers			

Miscellaneous Materials													
Gelling Agt		Conc		Surfactant		Conc		Acid Type		Qty		Conc	%
Treatment Fld		Conc		Inhibitor		Conc		Sand Type		Size		Qty	
Fluid Data													
Stage/Plug #: 1													
Fluid #	Stage Type	Fluid Name			Qty	Qty uom	Mixing Density lbm/gal	Yield ft <sup>3</sup> /sk	Mix Fluid Gal/sk	Rate bbl/min	Total Mix Fluid Gal/sk		
1	Water Spacer				20	bbl	8.4	.0	.0	.0			
2	VersaCem Lead Cement	VERSACEM (TM) SYSTEM (452010)			200	sacks	12.3	2.38	13.77		13.77		
	13.77 Gal	FRESH WATER											
3	SwiftCem Tail Cement	SWIFTCEM (TM) SYSTEM (452990)			200	sacks	14.2	1.43	6.85		6.85		
	6.85 Gal	FRESH WATER											
4	Displacement	FRESH WATER			62.5	bbl	.	.0	.0	.0			
Calculated Values		Pressures			Volumes								
Displacement	62.5	Shut In: Instant			Lost Returns	0	Cement Slurry		136	Pad			
Top Of Cement	SURFACE	5 Min			Cement Returns	27	Actual Displacement		62.5	Treatment			
Frac Gradient		15 Min			Spacers	20	Load and Breakdown			Total Job	218		
Rates													
Circulating	RIG	Mixing		7	Displacement	10/4		Avg. Job		8			
Cement Left In Pipe		Amount	28.5 ft	Reason	Shoe Joint								
Frac Ring # 1 @		ID		Frac ring # 2 @		ID		Frac Ring # 3 @		ID		Frac Ring # 4 @	
The Information Stated Herein Is Correct					Customer Representative Signature								

*The Road to Excellence Starts with Safety*

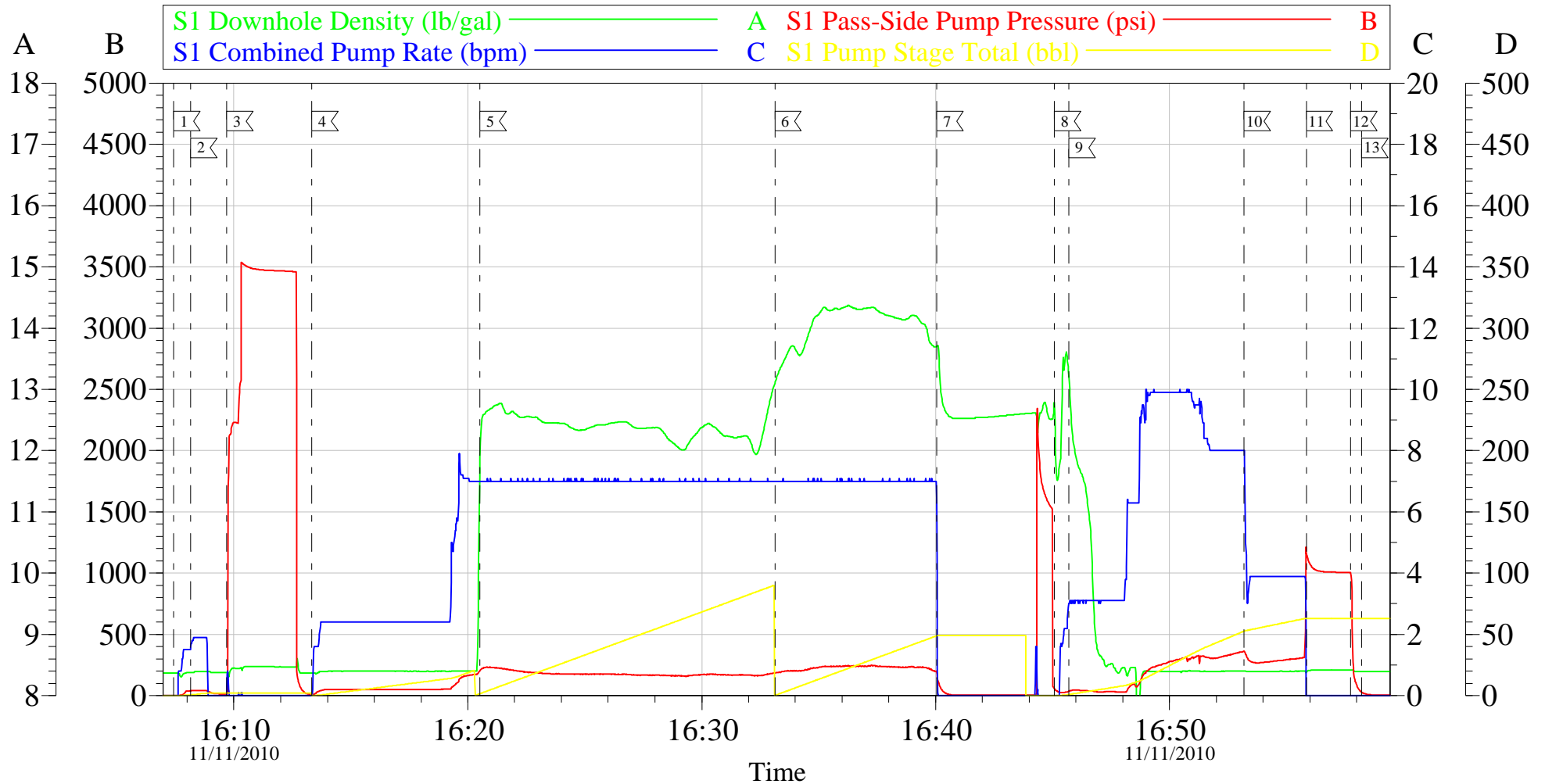
<b>Sold To #:</b> 344919	<b>Ship To #:</b> 2818709	<b>Quote #:</b>	<b>Sales Order #:</b> 7765282
<b>Customer:</b> LARAMIE ENERGY II LLC EBUSINESS		<b>Customer Rep:</b> Claussen, Kelly	
<b>Well Name:</b> SAVAGE	<b>Well #:</b> 18-08C	<b>API/UWI #:</b> 05-045-19140	
<b>Field:</b> WILDCAT	<b>City (SAP):</b> Rifle	<b>County/Parish:</b> Garfield	<b>State:</b> Colorado
<b>Legal Description:</b>			
<b>Lat:</b> N 39.442 deg. OR N 39 deg. 26 min. 31.128 secs.		<b>Long:</b> W 107.919 deg. OR W -108 deg. 4 min. 51.071 secs.	
<b>Contractor:</b> Precision Drilling Corp.		<b>Rig/Platform Name/Num:</b> Precision 706	
<b>Job Purpose:</b> Cement Surface Casing			<b>Ticket Amount:</b>
<b>Well Type:</b> Development Well		<b>Job Type:</b> Cement Surface Casing	
<b>Sales Person:</b> METLI, MARSHALL		<b>Srv Supervisor:</b> MAGERS, MICHAEL	<b>MBU ID Emp #:</b> 339439

Activity Description	Date/Time	Cht #	Rate bbl/min	Volume bbl		Pressure psig		Comments
				Stage	Total	Tubing	Casing	
Crew Leave Yard	11/11/2010 12:30							HES ALL PRESENT
Arrive At Loc	11/11/2010 14:30							
Assessment Of Location Safety Meeting	11/11/2010 14:45							WET AND MUDDY
Pre-Rig Up Safety Meeting	11/11/2010 14:50							JSA ON RIGGING UP
Rig-Up Equipment	11/11/2010 15:00							TD-1054.5 TP-1054.5 SJ-28.5 MW-9.2 CASING 8.625 32# J55 OH-12 1/4 CONDUCTOR SET AT 65'
Safety Huddle	11/11/2010 15:50							RIG AND HES ALL PRESENT
Start Job	11/11/2010 16:07							
Other	11/11/2010 16:08		2	2			34.0	FILL LINES
Pressure Test	11/11/2010 16:09		0.5	0.5			3500.0	PSI TEST OK
Pump Spacer 1	11/11/2010 16:13		4	20			135.0	FRESH WATER
Pump Lead Cement	11/11/2010 16:20		7	84.8			160.0	200 SKS 12.3 PPG 2.38 FT3/SK 13.77 GAL/SK
Pump Tail Cement	11/11/2010 16:33		7	50.9			215.0	200 SKS 14.2 PPG 1.43 FT3/SK 6.85 GAL/SK
Shutdown	11/11/2010 16:40							
Pump Displacement	11/11/2010 16:46		10	62.5			290.0	FRESH WATER
Drop Plug	11/11/2010 16:45							PLUG AWAY NO PROBLEM

Activity Description	Date/Time	Cht #	Rate bbl/ min	Volume bbl		Pressure psig		Comments
				Stage	Total	Tubing	Casing	
Slow Rate	11/11/2010 16:53		4	52			270.0	GOT 27 BBLS OF CEMENT TO SURFACE
Bump Plug	11/11/2010 16:55		4	62.5			320.0	BUMPED PLUG
Check Floats	11/11/2010 16:57			62.5			1055. 0	FLOATS HELD/GOT 1/2 BBL BACK INTO TANK
End Job	11/11/2010 16:58							HAD GOOD CIRCULATION THROUGHOUT JOB/THANKS FOR USING HES AND THE CREW OF MIKE MAGERS

# LARAMIE II PRECISION 706

## SURFACE



Local Event Log								
1	START JOB	16:07:25	2	FILL LINES	16:08:09	3	PRESSURE TEST	16:09:41
4	PUMP SPACER	16:13:19	5	PUMP LEAD CEMENT	16:20:30	6	PUMP TAIL CEMENT	16:33:08
7	SHUT DOWN	16:40:03	8	DROP PLUG	16:45:05	9	PUMP FRSH WTR DISPLACEMENT	16:45:42
10	SLOW RATE	16:53:11	11	BUMP PLUG	16:55:51	12	CHECK FLOATS	16:57:45
13	END JOB	16:58:12						

Customer:	LARAMIE II PRECISION 706	Job Date:	11-Nov-2010	Sales Order #:	7765282
Well Description:	SAVAGE 18-08C	Job Type:	SURFACE	ADC Used:	YES
Company Rep:	CORY CLAUSSEN	Cement Supervisor:	MIKE MAGERS	Elite #:	7 CHRIS SMITH