
LARAMIE ENERGY II LLC EBUSINESS

**Savage 10-08C
WILD CAT
Garfield County , Colorado**

Cement Production Casing
25-Nov-2010

Post Job Report

The Road to Excellence Starts with Safety

Sold To #: 344919	Ship To #: 2818709	Quote #:	Sales Order #: 7767019
Customer: LARAMIE ENERGY II LLC EBUSINESS	Customer Rep: Clausen, Kelly		
Well Name: Savage	Well #: 10-08C	API/UWI #:	
Field: WILD CAT	City (SAP): RIFLE	County/Parish: Garfield	State: Colorado
Contractor: Precision	Rig/Platform Name/Num: Precision 706		
Job Purpose: Cement Production Casing			
Well Type: Development Well	Job Type: Cement Production Casing		
Sales Person: METLI, MARSHALL	Srv Supervisor: MAGERS, MICHAEL	MBU ID Emp #:	339439

Job Personnel

HES Emp Name	Exp Hrs	Emp #	HES Emp Name	Exp Hrs	Emp #	HES Emp Name	Exp Hrs	Emp #
BORSZICH, STEPHEN A	7	412388	CUNNINGHAM, TANNER Wade	7	445660	DEUSSEN, ED	7	485182
HAYES, JESSE Doug	7	403601	MAGERS, MICHAEL Gerard	7	339439			

Equipment

HES Unit #	Distance-1 way	HES Unit #	Distance-1 way	HES Unit #	Distance-1 way	HES Unit #	Distance-1 way
10744648C	85 mile	10998508	85 mile	11259886	85 mile		

Job Hours

Date	On Location Hours	Operating Hours	Date	On Location Hours	Operating Hours	Date	On Location Hours	Operating Hours
11/24/2010	2	0	11/25/2010	5	2.5			
TOTAL	Total is the sum of each column separately							

Job

Formation Name	Formation Depth (MD)	Top	Bottom	Form Type	Job depth MD	Job Depth TVD	Water Depth	Perforation Depth (MD)	From	To	Job Times	Date	Time	Time Zone
				BHST	9065. ft	9065. ft					Called Out	24 - Nov - 2010	16:30	MST
											On Location	24 - Nov - 2010	22:00	MST
											Job Started	25 - Nov - 2010	02:13	MST
											Job Completed	25 - Nov - 2010	04:49	MST
											Departed Loc	25 - Nov - 2010	06:30	MST

Well Data

Description	New / Used	Max pressure psig	Size in	ID in	Weight lbm/ft	Thread	Grade	Top MD ft	Bottom MD ft	Top TVD ft	Bottom TVD ft
-------------	------------	-------------------	---------	-------	---------------	--------	-------	-----------	--------------	------------	---------------

Sales/Rental/3rd Party (HES)

Description	Qty	Qty uom	Depth	Supplier
PLUG,CMTG,TOP,4 1/2,HWE,3.65 MIN/4.14 MA	1	EA		
PORT. DAS W/CEMWIN;ACQUIRE W/HES, ZI	1	JOB		
ADC (AUTO DENSITY CTRL) SYS, /JOB,ZI	1	JOB		

Tools and Accessories

Type	Size	Qty	Make	Depth	Type	Size	Qty	Make	Depth	Type	Size	Qty	Make
Guide Shoe					Packer					Top Plug	4.5	1	HES
Float Shoe					Bridge Plug					Bottom Plug			
Float Collar					Retainer					SSR plug set			
Insert Float										Plug Container	4.5	1	HES
Stage Tool										Centralizers			

Miscellaneous Materials

Gelling Agt	Conc	Surfactant	Conc	Acid Type	Qty	Conc	%
Treatment Fld	Conc	Inhibitor	Conc	Sand Type	Size		Qty

Fluid Data									
Stage/Plug #: 1									
Fluid #	Stage Type	Fluid Name	Qty	Qty uom	Mixing Density lbm/gal	Yield ft ³ /sk	Mix Fluid Gal/sk	Rate bbl/min	Total Mix Fluid Gal/sk
1	Water Spacer		10.00	bbl	8.33	.0	.0	.0	
2	Mud Flush III	MUD FLUSH III - SBM (528788)	20.00	bbl	8.4	.0	.0	.0	
3	Water Spacer		10.00	bbl	8.33	.0	.0	.0	
4	Lead Cement	ECONOCEM (TM) SYSTEM (452992)	600.0	sacks	11.5	2.3	12.88	6.0	12.88
		12.88 Gal	FRESH WATER						
5	Tail Cement	HALCEM (TM) SYSTEM (452986)	500.0	sacks	13.5	1.74	7.6	6.0	7.6
		7.6 Gal	FRESH WATER						
6	KCL Displacement		140.00	bbl	.	.0	.0	.0	
Calculated Values		Pressures		Volumes					
Displacement	139.7	Shut In: Instant		Lost Returns	0	Cement Slurry	401	Pad	
Top Of Cement	SURFACE	5 Min		Cement Returns	10	Actual Displacement	140	Treatment	
Frac Gradient		15 Min		Spacers	40	Load and Breakdown		Total Job	581
Rates									
Circulating	RIG	Mixing	5	Displacement	10/4	Avg. Job	5		
Cement Left In Pipe	Amount	44.8 ft	Reason	Shoe Joint					
Frac Ring # 1 @	ID	Frac ring # 2 @	ID	Frac Ring # 3 @	ID	Frac Ring # 4 @	ID		
The Information Stated Herein Is Correct				Customer Representative Signature					

The Road to Excellence Starts with Safety

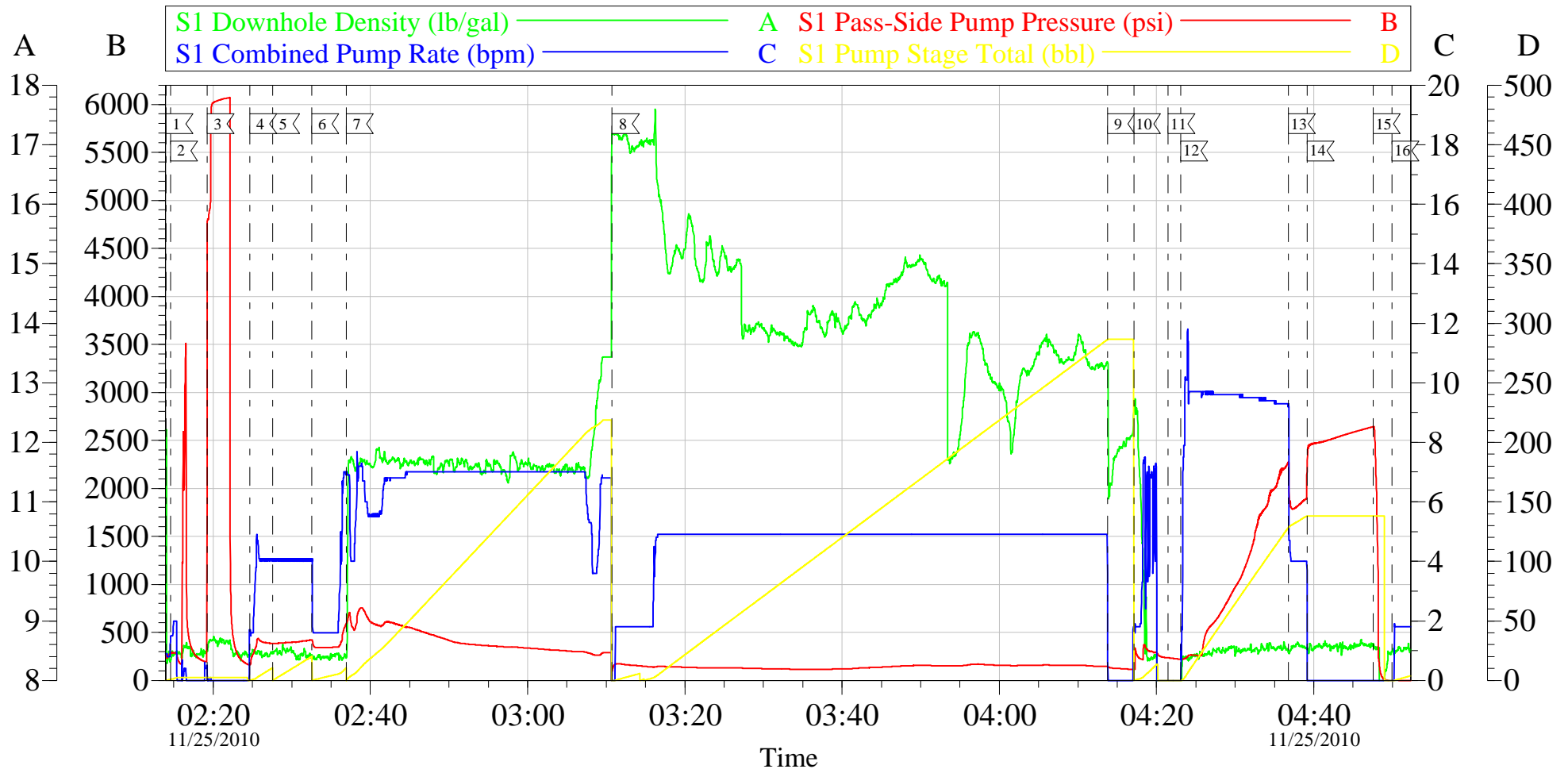
Sold To #: 344919	Ship To #: 2818709	Quote #:	Sales Order #: 7767019
Customer: LARAMIE ENERGY II LLC EBUSINESS		Customer Rep: Clausen, Kelly	
Well Name: Savage	Well #: 10-08C	API/UWI #:	
Field: WILD CAT	City (SAP): RIFLE	County/Parish: Garfield	State: Colorado
Legal Description:			
Lat: N 0 deg. OR N 0 deg. 0 min. 0 secs.		Long: E 0 deg. OR E 0 deg. 0 min. 0 secs.	
Contractor: Precision		Rig/Platform Name/Num: Precision 706	
Job Purpose: Cement Production Casing			Ticket Amount:
Well Type: Development Well		Job Type: Cement Production Casing	
Sales Person: METLI, MARSHALL		Srv Supervisor: MAGERS, MICHAEL	MBU ID Emp #: 339439

Activity Description	Date/Time	Cht #	Rate bbl/min	Volume bbl		Pressure psig		Comments
				Stage	Total	Tubing	Casing	
Crew Leave Yard	11/24/2010 19:00							HES ALL PRESENT
Arrive At Loc	11/24/2010 22:00							RIG WAS CIRCULATING WHEN HES ARRIVED. ELITE COULD NOT MAKE IT UP THE HILL TO LOCATION HAD TO CALL IN A CAT TO HAUL UP TO LOCATION/RIG CIRCULATED FOR 7.5 HRS WAITING FOR HES TO GET ON LOCATION AND RIGGED UP
Assessment Of Location Safety Meeting	11/24/2010 22:10							SNOWPACKED AND ICY AND COLD MINUS-2
Pre-Rig Up Safety Meeting	11/25/2010 00:50							JSA ON RIGGING UP
Rig-Up Equipment	11/25/2010 01:00							TD-9065 TP-9055 SJ-44.8 MW-9.8 CASING-4.5 11.6# J-55 OH-7 7/8
Safety Huddle	11/25/2010 02:00							RIG CREW AND HES ALL PRESENT
Start Job	11/25/2010 02:13							
Other	11/25/2010 02:14		2	2			292.0	FILL LINES
Pressure Test	11/25/2010 02:19		0.5	0.5			6067.0	PSI TEST OK
Pump Spacer 1	11/25/2010 02:24		4	10			384.0	FRESH WATER

Activity Description	Date/Time	Cht #	Rate bbl/min	Volume bbl		Pressure psig		Comments
				Stage	Total	Tubing	Casing	
Pump Spacer 2	11/25/2010 02:27		4	20			380.0	MUD FLUSH
Pump Spacer 1	11/25/2010 02:32		2	10			380.0	FRESH WATER
Pump Lead Cement	11/25/2010 02:36		7	245.8			517.0	600 SKS 11.5 PPG 2.3 FT3/SK 12.88 GAL/SK
Pump Tail Cement	11/25/2010 03:10		7	155			120.0	500 SKS 13.5 PPG 1.74 FT3/SK 7.6 GAL/SK /WHEN HES WENT TO TAIL COMPUTER SCREEN WENT DOWN/ SYSTEM STOPPED MIXING CEMENT HAD TO REBOOT COMPUTER/ SCREEN CAME UP AND RECIR NUMBERS WERE BOUNCING ALL OVER SAME AS THE DOWNHOLE.SLOW ED DOWN RATE TO GET
Shutdown	11/25/2010 04:13							UNDER CONTROL ENDED UP MIXING BY HAND. RECIR AND DOWNHOLE NEVER ADJUSTED TO DENSITY. WEIGHED TAIL CEMENT THROUGHOUT THE MIX/KEPT IT CLOSE TO 13.5 AS POSSIBLE/COMPUTER SCREEN WAS COMPLETELY OUT OF WACK/WAS IN CONSTANT CONTACT WITH DRILLER DURING THE
Clean Lines	11/25/2010 04:17		6	20				PROCESS. DECISION WAS MADE TO KEEP PUMPING /CLEAN LINE AND PUMPS/GO INTO DISPLACEMENT
Drop Plug	11/25/2010 04:21							PLUG AWAY NO PROBLEM

Activity Description	Date/Time	Cht #	Rate bbl/ min	Volume bbl		Pressure psig		Comments
				Stage	Total	Tubing	Casing	
Pump Displacement	11/25/2010 04:23		10	139.7			2298. 0	KCL/FRESH WATER DISPLACEMENT FIRST 10 BBLS SUGAR WATER
Slow Rate	11/25/2010 04:36		4	129			2100. 0	
Bump Plug	11/25/2010 04:39		4	139.7			2125. 0	BUMPED PLUG/GOT 10 BBLS OF CEMENT TO SURFACE
Check Floats	11/25/2010 04:47			139.7			2500. 0	FLOATS HELD/GOT 1 BBLBACK INTO DISPLACEMENT
End Job	11/25/2010 04:49							HAD GOOD CIRCULATION THROUGHOUT JOB/THANKS FOR USING HES AND THE CREW OF MIKE MAGERS

LARAMIE II PRECISION 706 PRODUCTION



Customer: LARAMIE II PRECISION 706	Job Date: 25-Nov-2010	Sales Order #: 7767019
Well Description: SAVAGE 10-08C	Job Type: PRODUCTION	ADC Used: YES
Company Rep: KELLY CLAUSSEN	Cement Supervisor: MIKE MAGERS	Elite #: 6 STEVE BORSZICH

OptiCem v6.3.4
25-Nov-10 05:42