

---

# **OXY GRAND JUNCTION EBUSINESS**

---

**CC 697-09-19A  
Piceance Creek  
Garfield County , Colorado**

**Cement Surface Casing  
13-Mar-2011**

**Post Job Summary**

### The Road to Excellence Starts with Safety

<b>Sold To #:</b> 344034		<b>Ship To #:</b> 2842284		<b>Quote #:</b>		<b>Sales Order #:</b> 7838655	
<b>Customer:</b> OXY GRAND JUNCTION EBUSINESS				<b>Customer Rep:</b> DILLION, PAT			
<b>Well Name:</b> CC			<b>Well #:</b> 697-09-19A			<b>API/UWI #:</b> 05-045-20020	
<b>Field:</b> Piceance Creek		<b>City (SAP):</b> Debque		<b>County/Parish:</b> Garfield		<b>State:</b> Colorado	
<b>Lat:</b> N 39.542 deg. OR N 39 deg. 32 min. 31.056 secs.				<b>Long:</b> W 108.238 deg. OR W -109 deg. 45 min. 42.674 secs.			
<b>Contractor:</b> OXY			<b>Rig/Platform Name/Num:</b> H&P 353				
<b>Job Purpose:</b> Cement Surface Casing							
<b>Well Type:</b> Development Well			<b>Job Type:</b> Cement Surface Casing				
<b>Sales Person:</b> DUNNING, DUSTIN			<b>Srvc Supervisor:</b> FEUERBORN, JOHN			<b>MBU ID Emp #:</b> 381677	

### Job Personnel

HES Emp Name	Exp Hrs	Emp #	HES Emp Name	Exp Hrs	Emp #	HES Emp Name	Exp Hrs	Emp #
FEUERBORN, JOHN William	13	381677	HAYES, JESSE Doug	13	403601	KEANE, JOHN Donovan	13	486519
SALAZAR, PAUL Omar	13	445614						

### Equipment

HES Unit #	Distance-1 way	HES Unit #	Distance-1 way	HES Unit #	Distance-1 way	HES Unit #	Distance-1 way
10053558	120 mile	10551730C	120 mile	10565341	120 mile	10804567	120 mile
10973571	120 mile	11259884	120 mile				

### Job Hours

Date	On Location Hours	Operating Hours	Date	On Location Hours	Operating Hours	Date	On Location Hours	Operating Hours
3-12-11	1	0	3-13-11	12	5			

<b>TOTAL</b>	Total is the sum of each column separately							
--------------	--	--	--	--	--	--	--	--

### Job

Formation Name	Top	Bottom	Called Out	Date	Time	Time Zone
Formation Depth (MD)			On Location	12 - Mar - 2011	11:30	MST
Form Type		BHST	Job Started	12 - Mar - 2011	19:30	MST
Job depth MD	2700. ft	Job Depth TVD	Job Completed	13 - Mar - 2011	02:44	MST
Water Depth		Wk Ht Above Floor	Departed Loc	13 - Mar - 2011	00:00	MST
Perforation Depth (MD)	From	To				

### Well Data

Description	New / Used	Max pressure psig	Size in	ID in	Weight lbm/ft	Thread	Grade	Top MD ft	Bottom MD ft	Top TVD ft	Bottom TVD ft
-------------	------------	-------------------	---------	-------	---------------	--------	-------	-----------	--------------	------------	---------------

### Sales/Rental/3<sup>rd</sup> Party (HES)

Description	Qty	Qty uom	Depth	Supplier
PLUG,CMTG,TOP,9 5/8,HWE,8.16 MIN/9.06 MA	1	EA		
R/A DENSOMETER W/CHART RECORDER,/JOB,ZI	1	JOB		
ADC (AUTO DENSITY CTRL) SYS, /JOB,ZI	1	JOB		

### Tools and Accessories

Type	Size	Qty	Make	Depth	Type	Size	Qty	Make	Depth	Type	Size	Qty	Make
Guide Shoe					Packer					Top Plug	9.625	1	
Float Shoe					Bridge Plug					Bottom Plug			
Float Collar					Retainer					SSR plug set			
Insert Float										Plug Container	9.625	1	
Stage Tool										Centralizers			

### Miscellaneous Materials

Gelling Agt	Conc	Surfactant	Conc	Acid Type	Qty	Conc	%
Treatment Fld	Conc	Inhibitor	Conc	Sand Type	Size		Qty

Fluid Data									
Stage/Plug #: 1									
Fluid #	Stage Type	Fluid Name	Qty	Qty uom	Mixing Density lbm/gal	Yield ft <sup>3</sup> /sk	Mix Fluid Gal/sk	Rate bbl/min	Total Mix Fluid Gal/sk
1	Water Spacer		20	bbl	8.33	.0	.0	.0	
2	Gel Water		20	bbl	8.4	.0	.0	.0	
0.25 gal/bbl		LGC-36 UC, BULK (101582749)							
3	Water Spacer		20	bbl	8.34	.0	.0	.0	
4	Lead Cement	VERSACEM (TM) SYSTEM (452010)	1032	sacks	12.3	2.33	12.62		12.62
12.62 Gal		FRESH WATER							
5	Tail Cement	VERSACEM (TM) SYSTEM (452010)	178	sacks	12.8	2.07	10.67		10.67
10.67 Gal		FRESH WATER							
6	Displacement		204.3	bbl	.	.0	.0	.0	
7	Topout Cement	HALCEM (TM) SYSTEM (452986)	77	sacks	12.7	1.97	10.96		10.96
10.96 Gal		FRESH WATER							
Calculated Values		Pressures		Volumes					
Displacement	204.3	Shut In: Instant		Lost Returns		Cement Slurry		Pad	
Top Of Cement	0	5 Min		Cement Returns	5	Actual Displacement		Treatment	
Frac Gradient		15 Min		Spacers	60	Load and Breakdown		Total Job	
Rates									
Circulating		Mixing		6	Displacement	6	Avg. Job		
Cement Left In Pipe	Amount	41 ft	Reason	Shoe Joint					
Frac Ring # 1 @	ID		Frac ring # 2 @	ID		Frac Ring # 3 @	ID	Frac Ring # 4 @	ID
The Information Stated Herein Is Correct				Customer Representative Signature					

*The Road to Excellence Starts with Safety*

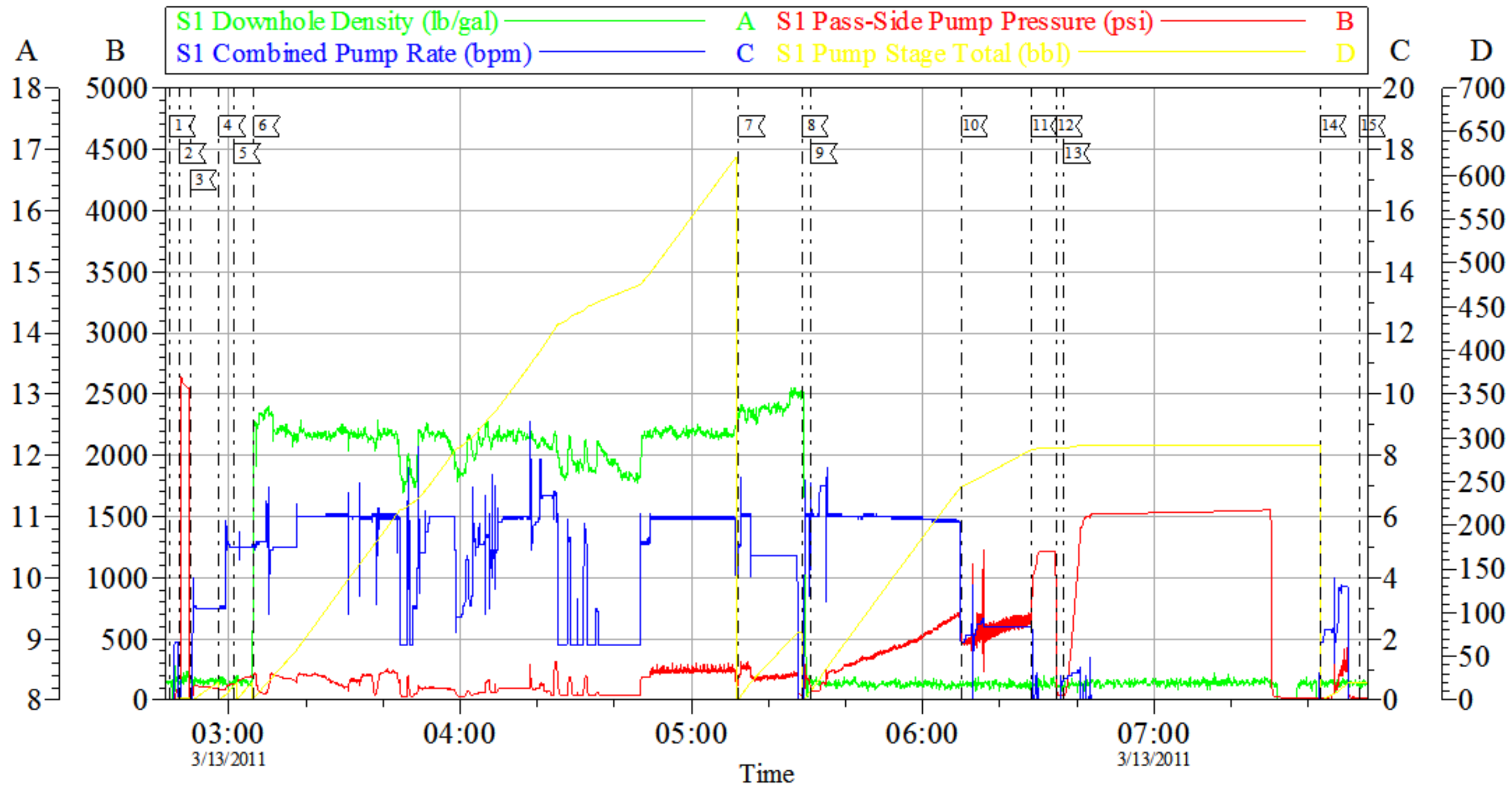
<b>Sold To #:</b> 344034	<b>Ship To #:</b> 2842284	<b>Quote #:</b>	<b>Sales Order #:</b> 7838655
<b>Customer:</b> OXY GRAND JUNCTION EBUSINESS		<b>Customer Rep:</b> DILLION, PAT	
<b>Well Name:</b> CC		<b>Well #:</b> 697-09-19A	<b>API/UWI #:</b> 05-045-20020
<b>Field:</b> Piceance Creek	<b>City (SAP):</b> Debque	<b>County/Parish:</b> Garfield	<b>State:</b> Colorado
<b>Legal Description:</b>			
<b>Lat:</b> N 39.542 deg. OR N 39 deg. 32 min. 31.056 secs.		<b>Long:</b> W 108.238 deg. OR W -109 deg. 45 min. 42.674 secs.	
<b>Contractor:</b> OXY		<b>Rig/Platform Name/Num:</b> H&P 353	
<b>Job Purpose:</b> Cement Surface Casing			<b>Ticket Amount:</b>
<b>Well Type:</b> Development Well		<b>Job Type:</b> Cement Surface Casing	
<b>Sales Person:</b> DUNNING, DUSTIN		<b>Srvc Supervisor:</b> FEUERBORN, JOHN	<b>MBU ID Emp #:</b> 381677

Activity Description	Date/Time	Cht #	Rate bbl/min	Volume bbl		Pressure psig		Comments
				Stage	Total	Tubing	Casing	
Depart Yard Safety Meeting	03/12/2011 13:00							
Crew Leave Yard	03/12/2011 13:15							
Arrive At Loc	03/12/2011 19:30							
Safety Meeting - Assessment of Location	03/12/2011 19:45							
Other	03/12/2011 22:30							SPOT EQUIPMENT
Pre-Rig Up Safety Meeting	03/12/2011 22:40							
Rig-Up Equipment	03/12/2011 22:45							
Other	03/13/2011 01:30							RIG CIRCULATING ON BOTTOM
Pre-Job Safety Meeting	03/13/2011 02:15							
Start Job	03/13/2011 02:44							
Pump Spacer 1	03/13/2011 02:50		3	20			125.0	H2O
Pump Spacer 1	03/13/2011 02:57		6	20			125.0	LGC GEL SPACER
Pump Spacer 1	03/13/2011 03:01		6	20			145.0	H2O
Pump Lead Cement	03/13/2011 03:06		6	428			250.0	1032sks PUMPED AT 12.3ppg 2.33y 12.62wr ADDED 2 BOXES TUFF FIBER CEMENT SLEVE PACKED OFF HAD ROUGH TIME MIXING
Test Lines	03/13/2011 03:47							2500psi ON TRUCK AND LINES
Pump Tail Cement	03/13/2011 05:12		6	66			280.0	179sks PUMPED AT 12.8ppg 2.07y 10.67wr TOP OF TAIL 1972'

Sold To # : 344034 Ship To # :2842284 Quote # : Sales Order # : 7838655

Activity Description	Date/Time	Cht #	Rate bbl/ min	Volume bbl		Pressure psig		Comments
				Stage	Total	Tubing	Casing	
Drop Top Plug	03/13/2011 05:28							PLUG AWAY
Pump Displacement	03/13/2011 05:31		6				735.0	H2O
Other	03/13/2011 06:10		2	190			600.0	SLOW RATE
Bump Plug	03/13/2011 06:28		2	203.4			1235.0	
Check Floats	03/13/2011 06:34							HOLDING
Pressure Test	03/13/2011 06:36						1500.0	CASING
Other	03/13/2011 07:43						450.0	PUMP SUGAR WATER DOWN PARISITE
Other	03/13/2011 07:55							GET SET TO TOP OUT
Start Job	03/13/2011 11:39							
Pump Spacer 1	03/13/2011 11:40		0.5	0.5			20.0	H2O CHEC LINES ARE FREE
Pump Tail Cement	03/13/2011 11:45		1.5	27			20.0	77sks PUMPED AT 12.5ppg 1.97y 10.96wr 5 BBLS TO SURFACE
Pump Displacement	03/13/2011 12:16		1.5	0.5			20.0	H2O
Shutdown	03/13/2011 12:17							CEMENT TO SURFACE CREW RELEASED
End Job	03/13/2011 12:18							

# OXY SURFACE



Local Event Log					
[1] START JOB	02:44:33	[2] TEST LINES	02:47:16	[3] PUMP SPACER	02:50:01
[4] PUMP GEL	02:57:25	[5] PUMP SPACER	03:01:20	[6] PUMP LEAD CEMENT	03:06:26
[7] PUMP TAIL CEMENT	05:12:16	[8] DROP PLUG	05:28:41	[9] PUMP DISPLACEMENT	05:31:00
[10] SLOW RATE	06:10:06	[11] BUMP PLUG	06:28:05	[12] CHECK FLOATS	06:34:42
[13] PRESSURE TEST CASING	06:36:39	[14] PUMP PARISITE	07:43:05	[15] END JOB	07:53:15

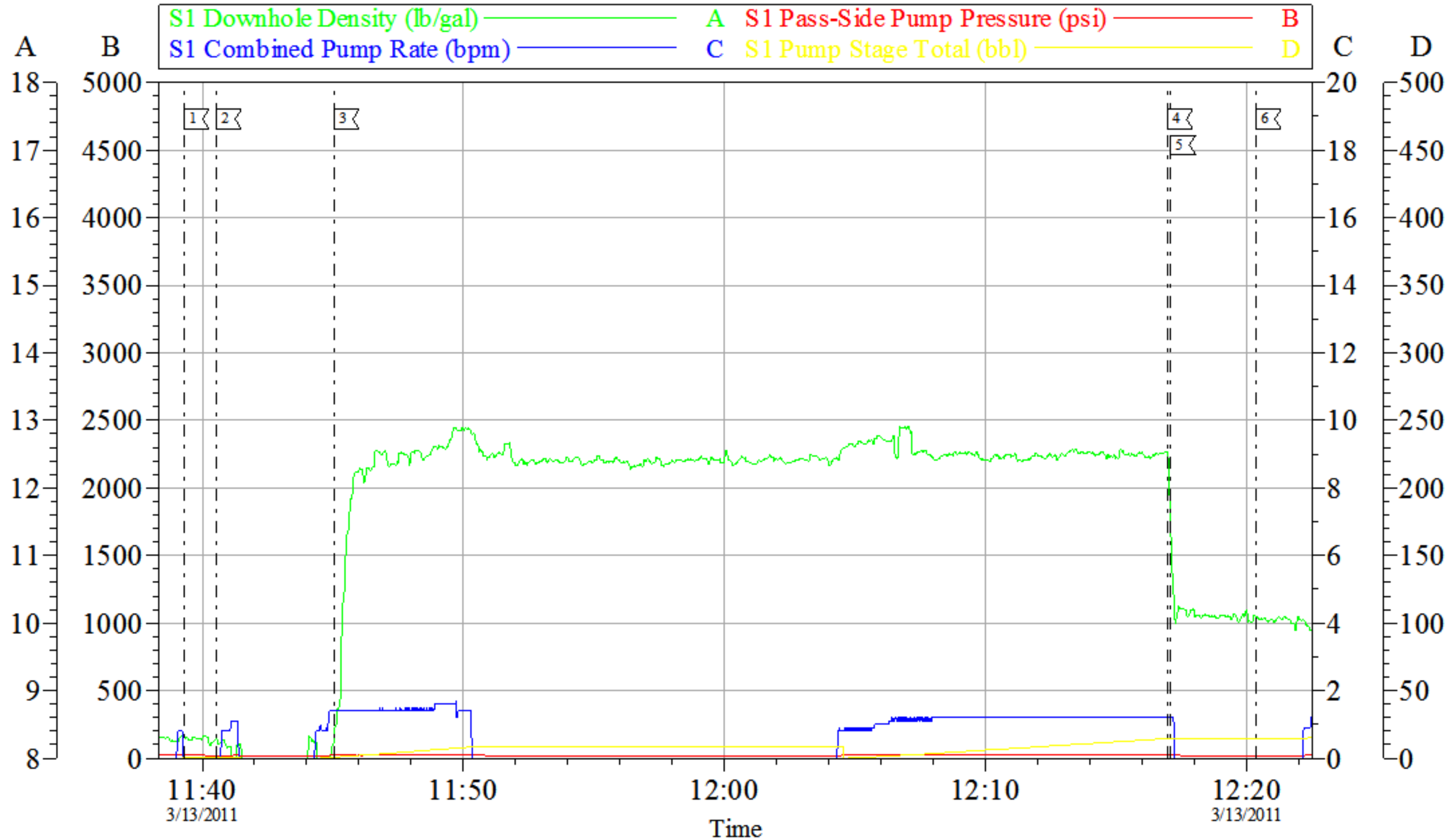
Customer: OXY  
Well Description: CC 697-09-19A  
Company Rep: HENRY

Job Date: 13-Mar-2011  
Job Type: SURFACE  
Cement Supervisor: JOHN FEUERBORN

Sales Order #: 7838655  
ADC Used: YES  
Elite #:2 PAUL SALAZAR

OptiCem v6.4.0  
13-Mar-11 09:19

# OXY TOP OUT



Local Event Log					
1	START TOP OUT	11:39:17	2	CHECK LINES	11:40:32
3	PUMP TOP OUT	11:45:03	4	PUMP DISPLACMENT	12:16:59
5	SHUT DOWN	12:17:05	6	END JOB	12:20:22

Customer: OXY  
Well Description: CC 697-09-19A  
Company Rep: HENRY

Job Date: 13-Mar-2011  
Job Type: TOP OUT  
Cement Supervisor: JOHN FEUERBORN

Sales Order #: 7838655  
ADC Used: NO  
Elite #:2 P SALAZAR

OptiCem v6.4.0  
13-Mar-11 12:50