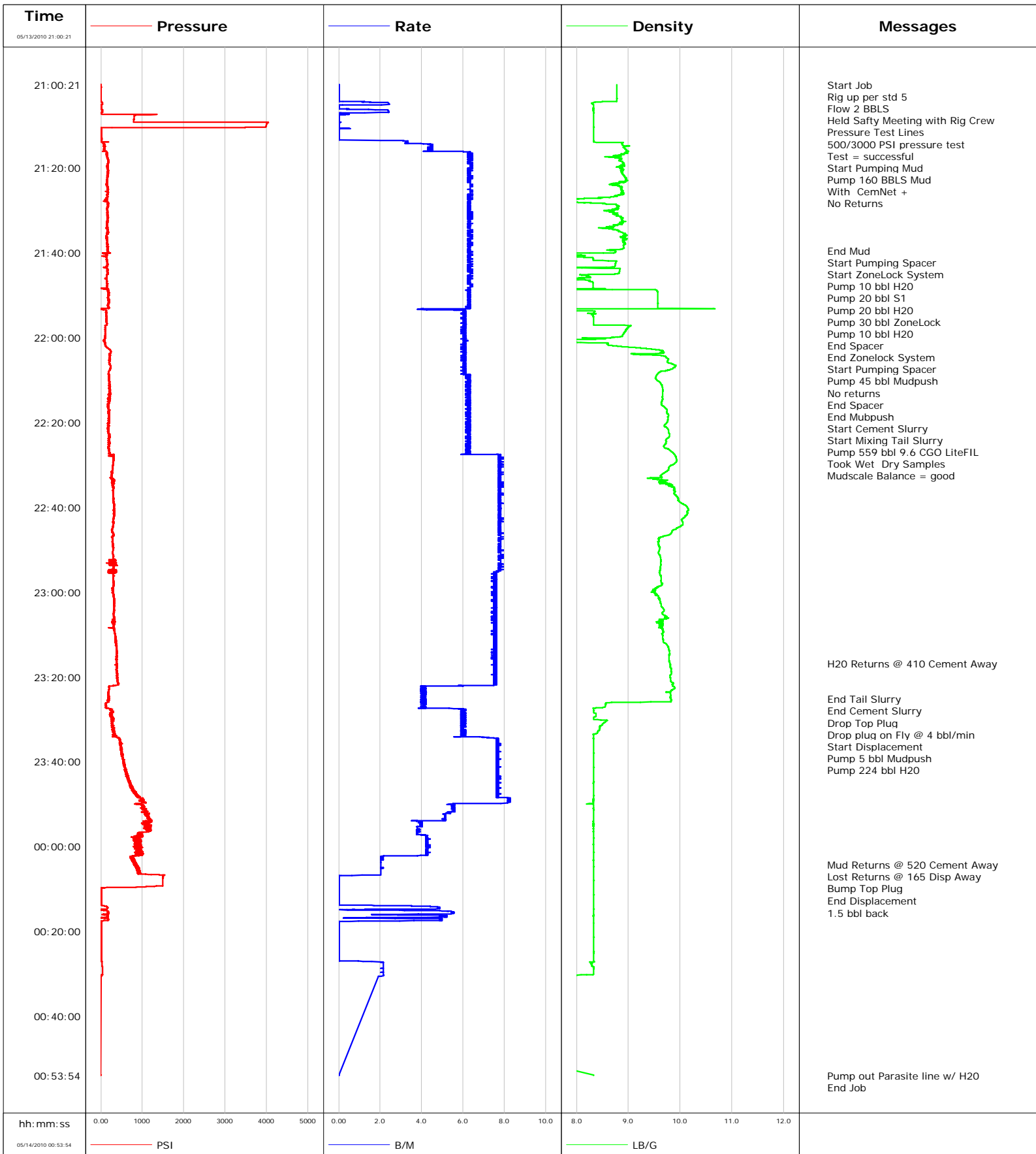


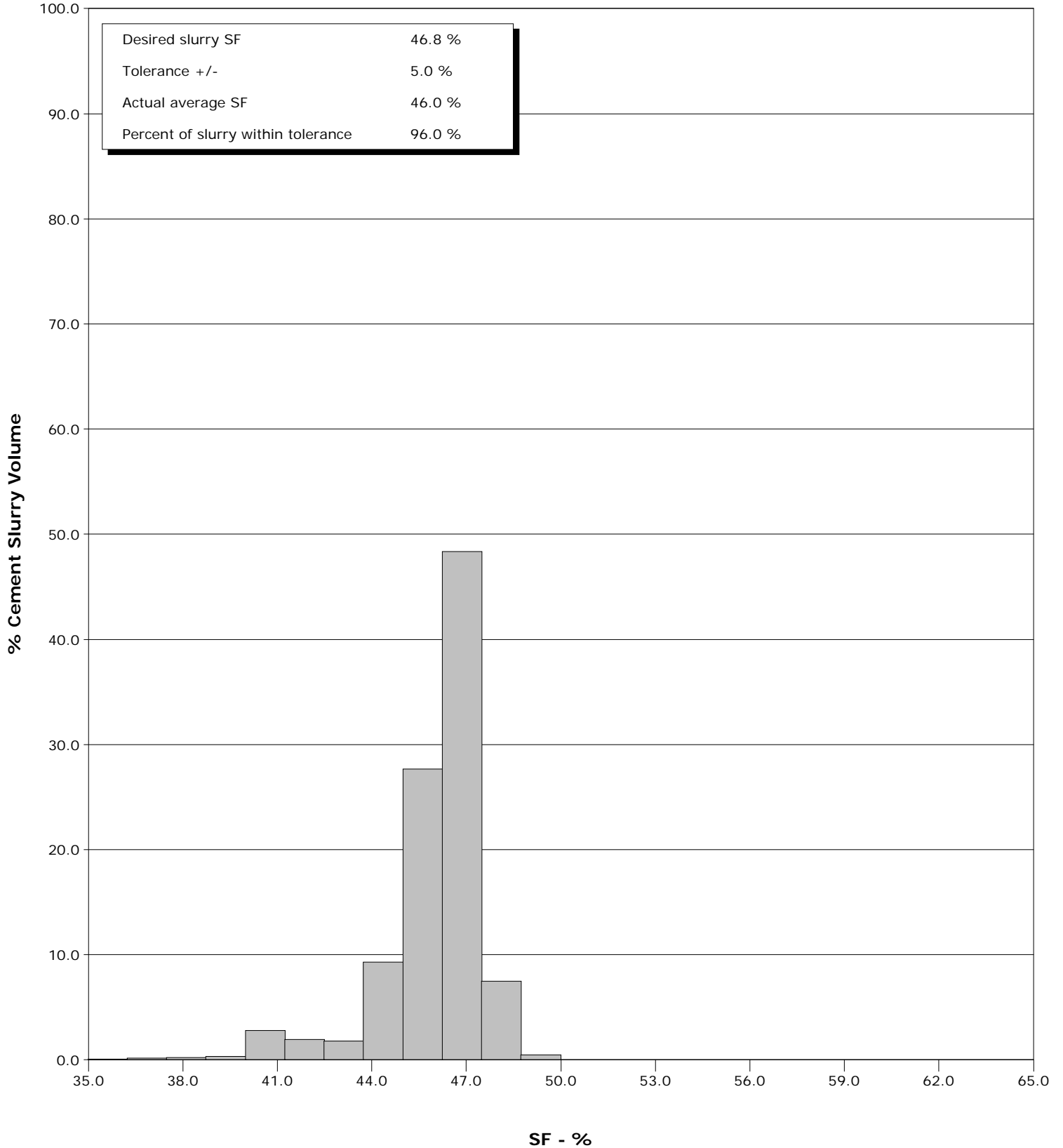
<b>Well</b>	SGU-8506C-25 F25 496	<b>Client</b>	Encana Oil Gas
<b>Field</b>	N Piceance	<b>SIR No.</b>	350176
<b>Engineer</b>	B. Farnham	<b>Job Type</b>	9 5/8" surface
<b>Country</b>	United States	<b>Job Date</b>	5/13/2010



**Well** SGU-8506C-25 F25 496  
**Field** N Piceance  
**Engineer** B. Farnham  
**Country** United States

**Client** Encana Oil Gas  
**SIR No.** 350176  
**Job Type** 9 5/8" surface  
**Job Date** 5/13/2010

Cement Slurry - 05/13/2010 22:02:39 to 05/13/2010 23:25:11



<b>Customer</b> Encana Oil & Gas	<b>Job Number</b> 350176
-------------------------------------	-----------------------------

<b>Well</b> SGU-8506C-25 F25 496 SGU-8506C-25 F25 496	<b>Location (legal)</b> Patterson 306	<b>Schlumberger Location</b>	<b>Job Start</b> May/13/2010
--	--	------------------------------	---------------------------------

<b>Field</b> N Piceance	<b>Formation Name/Type</b> shale	<b>Deviation</b> 15 deg	<b>Bit Size</b> 14.8 in	<b>Well MD</b> 3010.0 ft	<b>Well TVD</b> 3010.0 ft
----------------------------	-------------------------------------	----------------------------	----------------------------	-----------------------------	------------------------------

<b>County</b> Garfield	<b>State/Province</b> Colorado	<b>BHP</b>	<b>BHST</b> 115 degF	<b>BHCT</b> 95 degF	<b>Pore Press. Gradient</b>
---------------------------	-----------------------------------	------------	-------------------------	------------------------	-----------------------------

<b>Well Master</b> 0631182160	<b>API/UWI</b>	<b>Casing/Liner</b>			
----------------------------------	----------------	---------------------	--	--	--

<b>Rig Name</b> Patterson 306	<b>Drilled For</b> Gas	<b>Service Via</b> Land	<b>Depth, ft</b>	<b>Size, in</b>	<b>Weight, lb/ft</b>	<b>Grade</b>	<b>Thread</b>
----------------------------------	---------------------------	----------------------------	------------------	-----------------	----------------------	--------------	---------------

<b>Offshore Zone</b>	<b>Well Class</b> New	<b>Well Type</b> New Well Completion	120.0	20.000	94.0		8RD
----------------------	--------------------------	---	-------	--------	------	--	-----

<b>Drilling Fluid Type</b> Bentonite	<b>Max. Density</b> 8.90 lb/gal	<b>Plastic Viscosity</b> 12.000 cP	<b>Tubing/Drill Pipe</b>			
---	------------------------------------	---------------------------------------	--------------------------	--	--	--

<b>Service Line</b> Cementing	<b>Job Type</b> 9 5/8" surface	<b>Perforations/Open Hole</b>			
----------------------------------	-----------------------------------	-------------------------------	--	--	--

<b>Max. Allowed Tub. Press</b> 3000 psi	<b>Max. Allowed Ann. Press</b> 1500 psi	<b>WH Connection</b> Single Cement head	<b>Top,</b>	<b>Bottom,</b>	<b>No. of Shots</b>	<b>Total Interval</b>
--	--	--	-------------	----------------	---------------------	-----------------------

<b>Service Instructions</b> Cement 9 5/8" Surface Casing @ 3015ft w/ 50% Excess 160 bbls CemNET + in mud 30 bbls ZONELOCK 50 bbls MUDPUSH @ 8.6 ppg 1205 sks 9.6 ppg GCO LiteFIL Drop plug on fly with 5 bbls 8.6 ppg MudPUSH II Displace w water CemNET in all slurry						
						<b>Diameter</b>
<b>Treat Down</b> Casing	<b>Displacement</b> 229.0 bbl	<b>Packer Type</b>	<b>Packer Depth</b>			
<b>Tubing Vol.</b>	<b>Casing Vol.</b> 229.0 bbl	<b>Annular Vol.</b> 383.0 bbl	<b>Openhole Vol.</b> 633.0 bbl			

<b>Casing/Tubing Secured</b> <input checked="" type="checkbox"/>	<b>1 Hole Vol. Circulated prior to Cement</b> <input type="checkbox"/>	<b>Casing Tools</b>		<b>Squeeze Job</b>	
--	--	---------------------	--	--------------------	--

<b>Lift Pressure</b> 1489 psi	<b>Shoe Type</b> guide	<b>Squeeze Type</b>
----------------------------------	---------------------------	---------------------

<b>Pipe Rotated</b> <input type="checkbox"/>	<b>Pipe Reciprocated</b> <input type="checkbox"/>	<b>Shoe Depth</b> 3010.0 ft	<b>Tool Type</b>
--	---	--------------------------------	------------------

<b>No. Centralizers</b> 22	<b>Top Plugs</b> 1	<b>Bottom Plugs</b>	<b>Stage Tool Type</b>	<b>Tool Depth</b>
-------------------------------	-----------------------	---------------------	------------------------	-------------------

<b>Cement Head Type</b> Single	<b>Stage Tool Depth</b>	<b>Tail Pipe Size</b>
-----------------------------------	-------------------------	-----------------------

<b>Job Scheduled For</b> May/13/2010 18:00	<b>Arrived on Location</b> May/13/2010 18:00	<b>Leave Location</b> Apr/25/2010 23:59	<b>Collar Type</b> Float	<b>Tail Pipe Depth</b>
---	---	--	-----------------------------	------------------------

			<b>Collar Depth</b> 2960.0 ft	<b>Sqz. Total Vol.</b>
--	--	--	----------------------------------	------------------------

Date	Time 24-hr clock	Treating Pressure PSI	Flow Rate B/M	Density LB/G	Volume BBL	Message
05/13/2010	20:29:15					Started Acquisition
05/13/2010	21:00:21	-0	0.0	8.77	0.0	
05/13/2010	21:00:23					Start Job
05/13/2010	21:00:23	-0	0.0	8.77	0.0	
05/13/2010	21:00:26					Rig up per std 5
05/13/2010	21:00:26					Flow 2 BBLs
05/13/2010	21:00:26	-0	0.0	8.77	0.0	
05/13/2010	21:00:28					Held Safty Meeting with Rig Crew
05/13/2010	21:00:28	0	0.0	8.77	0.0	
05/13/2010	21:00:45	0	0.0	8.77	0.0	
05/13/2010	21:01:15	-0	0.0	8.77	0.0	
05/13/2010	21:01:45	-3	0.0	8.77	0.0	
05/13/2010	21:02:15	-2	0.0	8.77	0.0	
05/13/2010	21:02:45	-1	0.0	8.77	0.0	
05/13/2010	21:03:15	-1	0.0	8.77	0.0	
05/13/2010	21:03:45	-1	0.0	8.77	0.0	
05/13/2010	21:04:15	-1	0.0	8.77	0.0	
05/13/2010	21:04:45	43	2.4	8.29	0.7	
05/13/2010	21:05:15	4	0.0	8.33	1.7	
05/13/2010	21:05:45	0	0.0	8.33	1.7	
05/13/2010	21:06:15	15	1.3	8.32	1.8	

Well		Field		Job Start	Customer	Job Number
SGU-8506C-25 F25 496 SGU-8506C-25 F25 496		N Piceance		May/13/2010	Encana Oil & Gas	350176
Date	Time 24-hr clock	Treating Pressure PSI	Flow Rate B/M	Density LB/G	Volume BBL	Message
05/13/2010	21:07:03					Pressure Test Lines
05/13/2010	21:07:03	8	0.1	8.33	3.5	
05/13/2010	21:07:15	9	0.0	8.33	3.5	
05/13/2010	21:07:25					500/3000 PSI pressure test
05/13/2010	21:07:25	638	0.4	8.33	3.5	
05/13/2010	21:07:26					Test = successful
05/13/2010	21:07:26	1350	0.3	8.33	3.5	
05/13/2010	21:07:45	811	0.0	8.33	3.5	
05/13/2010	21:08:15	800	0.0	8.33	3.5	
05/13/2010	21:08:45	797	0.0	8.33	3.5	
05/13/2010	21:09:15	2197	0.1	8.33	3.5	
05/13/2010	21:09:45	4001	0.0	8.33	3.5	
05/13/2010	21:10:15	3988	0.0	8.33	3.5	
05/13/2010	21:10:45	12	0.3	8.33	3.6	
05/13/2010	21:10:55					Start Pumping Mud
05/13/2010	21:10:55	10	0.0	8.33	3.6	
05/13/2010	21:11:15	10	0.0	8.33	3.6	
05/13/2010	21:11:45	9	0.0	8.33	3.6	
05/13/2010	21:11:54					Pump 160 BBLs Mud
05/13/2010	21:11:54	9	0.0	8.33	3.6	
05/13/2010	21:11:55					With CemNet +
05/13/2010	21:11:55					No Returns
05/13/2010	21:11:55	9	0.0	8.33	3.6	
05/13/2010	21:12:15	9	0.0	8.33	3.6	
05/13/2010	21:12:45	9	0.0	8.33	3.6	
05/13/2010	21:13:15	14	0.0	8.33	3.6	
05/13/2010	21:13:45	11	3.3	8.33	4.4	
05/13/2010	21:14:15	50	3.2	8.87	6.1	
05/13/2010	21:14:45	82	4.4	8.90	8.2	
05/13/2010	21:15:15	83	4.3	8.91	10.4	
05/13/2010	21:15:45	80	4.3	8.96	12.6	
05/13/2010	21:16:15	144	6.1	8.96	15.0	
05/13/2010	21:16:45	148	6.4	8.86	18.2	
05/13/2010	21:17:15	156	6.2	8.81	21.3	
05/13/2010	21:17:45	163	6.5	8.85	24.5	
05/13/2010	21:18:15	189	6.4	8.83	27.7	
05/13/2010	21:18:45	171	6.4	8.89	30.9	
05/13/2010	21:19:15	172	6.4	8.91	34.0	
05/13/2010	21:19:45	170	6.4	8.82	37.2	
05/13/2010	21:20:15	175	6.4	8.89	40.4	
05/13/2010	21:20:45	173	6.4	8.88	43.5	
05/13/2010	21:21:15	170	6.2	8.87	46.7	
05/13/2010	21:21:45	153	6.4	8.90	49.9	
05/13/2010	21:22:15	154	6.4	8.95	53.0	
05/13/2010	21:22:45	144	6.4	8.97	56.2	
05/13/2010	21:23:15	152	6.4	8.83	59.4	
05/13/2010	21:23:45	143	6.4	8.75	62.5	
05/13/2010	21:24:15	159	6.4	8.82	65.7	
05/13/2010	21:24:45	170	6.4	8.86	68.9	
05/13/2010	21:25:15	173	6.4	8.87	72.1	
05/13/2010	21:25:45	176	6.4	8.87	75.2	
05/13/2010	21:26:15	154	6.4	8.91	78.4	
05/13/2010	21:26:45	160	6.4	8.73	81.6	
05/13/2010	21:27:15	154	6.4	8.04	84.7	

Well		Field		Job Start	Customer		Job Number
SGU-8506C-25 F25 496 SGU-8506C-25 F25 496		N Piceance		May/13/2010	Encana Oil & Gas		350176
Date	Time 24-hr clock	Treating Pressure PSI	Flow Rate B/M	Density LB/G	Volume BBL	Message	
05/13/2010	21:28:15	176	6.4	8.19	91.1		
05/13/2010	21:28:45	166	6.2	8.77	94.2		
05/13/2010	21:29:15	168	6.2	8.78	97.3		
05/13/2010	21:29:45	157	6.2	8.73	100.5		
05/13/2010	21:30:15	158	6.2	8.68	103.6		
05/13/2010	21:30:45	155	6.2	8.73	106.8		
05/13/2010	21:31:15	147	6.4	8.80	110.0		
05/13/2010	21:31:45	185	6.4	8.85	113.1		
05/13/2010	21:32:15	163	6.2	8.89	116.3		
05/13/2010	21:32:45	149	6.4	8.89	119.4		
05/13/2010	21:33:15	145	6.4	8.84	122.6		
05/13/2010	21:33:45	144	6.2	8.73	125.8		
05/13/2010	21:34:15	146	6.2	8.61	128.9		
05/13/2010	21:34:45	163	6.5	8.78	132.1		
05/13/2010	21:35:15	177	6.2	8.89	135.2		
05/13/2010	21:35:45	150	6.4	8.96	138.4		
05/13/2010	21:36:15	135	6.4	8.85	141.5		
05/13/2010	21:36:45	153	6.4	8.97	144.7		
05/13/2010	21:37:15	147	6.2	8.91	147.8		
05/13/2010	21:37:45	143	6.4	8.93	151.0		
05/13/2010	21:38:15	164	6.4	8.90	154.2		
05/13/2010	21:38:45	155	6.4	8.91	157.3		
05/13/2010	21:39:15	153	6.2	8.82	160.5		
05/13/2010	21:39:33					End Mud	
05/13/2010	21:39:33	171	6.4	8.74	162.3		
05/13/2010	21:39:40					Start Pumping Spacer	
05/13/2010	21:39:40	165	6.2	8.75	163.1		
05/13/2010	21:39:43					Start ZoneLock System	
05/13/2010	21:39:43	156	6.2	8.74	163.4		
05/13/2010	21:39:45	161	6.5	8.75	163.6		
05/13/2010	21:40:15	138	6.4	6.05	166.8		
05/13/2010	21:40:45	34	6.2	7.72	169.9		
05/13/2010	21:40:50					Pump 10 bbl H20	
05/13/2010	21:40:50	67	6.2	6.88	170.5		
05/13/2010	21:41:15	140	6.2	8.32	173.1		
05/13/2010	21:41:45	151	6.2	8.32	176.2		
05/13/2010	21:41:46					Pump 20 bbl S1	
05/13/2010	21:41:46	154	6.2	8.32	176.3		
05/13/2010	21:42:15	150	6.4	8.76	179.4		
05/13/2010	21:42:45	164	6.4	8.75	182.6		
05/13/2010	21:43:15	153	6.4	8.74	185.7		
05/13/2010	21:43:45	152	6.2	8.84	188.9		
05/13/2010	21:44:15	149	6.4	8.83	192.0		
05/13/2010	21:44:45	160	6.4	8.82	195.2		
05/13/2010	21:45:12					Pump 20 bbl H20	
05/13/2010	21:45:12	143	6.4	8.08	198.0		
05/13/2010	21:45:15	146	6.4	8.07	198.4		
05/13/2010	21:45:45	147	6.4	8.26	201.5		
05/13/2010	21:46:15	138	6.2	7.70	204.7		
05/13/2010	21:46:45	144	6.2	8.25	207.8		
05/13/2010	21:47:15	148	6.2	8.32	210.9		
05/13/2010	21:47:45	158	6.4	8.32	214.1		
05/13/2010	21:48:15	156	6.2	8.32	217.3		
05/13/2010	21:48:20					Pump 30 bbl ZoneLock	

Well		Field		Job Start		Customer		Job Number	
SGU-8506C-25 F25 496 SGU-8506C-25 F25 496		N Piceance		May/13/2010		Encana Oil & Gas		350176	
Date	Time 24-hr clock	Treating Pressure PSI	Flow Rate B/M	Density LB/G	Volume BBL	Message			
05/13/2010	21:48:45	167	6.2	9.52	220.4				
05/13/2010	21:49:15	175	6.2	9.56	223.6				
05/13/2010	21:49:45	189	6.4	9.57	226.8				
05/13/2010	21:49:57					Pump 10 bbl H2O			
05/13/2010	21:49:57	185	6.4	9.57	228.0				
05/13/2010	21:50:15	175	6.2	9.57	229.9				
05/13/2010	21:50:45	172	6.4	9.57	233.1				
05/13/2010	21:51:15	182	6.2	9.57	236.2				
05/13/2010	21:51:45	180	6.2	9.57	239.4				
05/13/2010	21:52:15	171	6.2	9.57	242.5				
05/13/2010	21:52:45	172	6.4	9.57	245.7				
05/13/2010	21:53:15	27	4.0	2.15	248.7				
05/13/2010	21:53:45	137	6.0	8.31	251.3				
05/13/2010	21:54:15	134	6.0	8.34	254.3				
05/13/2010	21:54:45	123	6.1	8.32	257.3				
05/13/2010	21:55:15	144	6.0	8.33	260.4				
05/13/2010	21:55:45	132	6.1	8.33	263.4				
05/13/2010	21:56:15	148	6.1	8.33	266.4				
05/13/2010	21:56:17					End Spacer			
05/13/2010	21:56:17	136	6.0	8.33	266.6				
05/13/2010	21:56:22					End Zonelock System			
05/13/2010	21:56:22	134	6.1	8.33	267.2				
05/13/2010	21:56:45	142	6.0	8.33	269.5				
05/13/2010	21:57:10					Start Pumping Spacer			
05/13/2010	21:57:10	105	6.0	9.04	272.0				
05/13/2010	21:57:15					Pump 45 bbl Mudpush			
05/13/2010	21:57:15	108	6.0	9.04	272.5				
05/13/2010	21:57:33					No returns			
05/13/2010	21:57:33	109	6.0	9.01	274.3				
05/13/2010	21:57:45	110	6.0	8.99	275.6				
05/13/2010	21:58:15	106	6.1	8.96	278.6				
05/13/2010	21:58:45	111	6.1	8.92	281.6				
05/13/2010	21:59:15	108	6.0	8.90	284.7				
05/13/2010	21:59:45	106	6.1	8.87	287.7				
05/13/2010	22:00:15	92	6.1	8.41	290.7				
05/13/2010	22:00:45	80	6.1	7.19	293.8				
05/13/2010	22:01:15	105	6.1	8.43	296.8				
05/13/2010	22:01:45	114	6.1	8.61	299.9				
05/13/2010	22:02:15	135	6.0	8.99	302.9				
05/13/2010	22:02:32					End Spacer			
05/13/2010	22:02:32	171	6.1	9.26	304.6				
05/13/2010	22:02:35					End Mubpush			
05/13/2010	22:02:35	179	6.1	9.32	304.9				
05/13/2010	22:02:39					Start Cement Slurry			
05/13/2010	22:02:39	184	6.1	9.38	305.3				
05/13/2010	22:02:45	205	6.0	9.47	305.9				
05/13/2010	22:03:15	239	6.0	9.65	308.9				
05/13/2010	22:03:42					Start Mixing Tail Slurry			
05/13/2010	22:03:42	245	6.0	9.67	311.7				
05/13/2010	22:03:45	216	6.0	9.65	312.0				
05/13/2010	22:04:15	232	6.0	9.63	315.0				
05/13/2010	22:04:45	215	6.1	9.73	318.0				
05/13/2010	22:05:45	201	6.1	9.75	324.1				
05/13/2010	22:06:15	220	6.0	9.84	327.1				

Well		Field		Job Start		Customer		Job Number	
SGU-8506C-25 F25 496 SGU-8506C-25 F25 496		N Piceance		May/13/2010		Encana Oil & Gas		350176	
Date	Time 24-hr clock	Treating Pressure PSI	Flow Rate B/M	Density LB/G	Volume BBL	Message			
05/13/2010	22:07:15	223	6.1	9.86	333.2				
05/13/2010	22:07:45	201	6.0	9.75	336.2				
05/13/2010	22:08:15	198	6.1	9.60	339.3				
05/13/2010	22:08:45	207	6.2	9.55	342.3				
05/13/2010	22:09:15	208	6.2	9.53	345.4				
05/13/2010	22:09:33					Pump 559 bbl 9.6 CGO LiteFIL			
05/13/2010	22:09:33					Took Wet Dry Samples			
05/13/2010	22:09:33	182	6.4	9.52	347.3				
05/13/2010	22:09:35					Mudscale Balance = good			
05/13/2010	22:09:35	197	6.4	9.52	347.5				
05/13/2010	22:09:45	196	6.4	9.53	348.6				
05/13/2010	22:10:15	203	6.4	9.57	351.7				
05/13/2010	22:10:45	206	6.4	9.62	354.9				
05/13/2010	22:11:15	180	6.1	9.64	358.0				
05/13/2010	22:11:45	221	6.2	9.66	361.1				
05/13/2010	22:12:15	192	6.4	9.67	364.2				
05/13/2010	22:12:45	217	6.4	9.67	367.4				
05/13/2010	22:13:15	227	6.4	9.66	370.5				
05/13/2010	22:13:45	204	6.2	9.66	373.6				
05/13/2010	22:14:15	209	6.2	9.66	376.8				
05/13/2010	22:14:45	194	6.1	9.65	379.9				
05/13/2010	22:15:15	187	6.2	9.65	383.0				
05/13/2010	22:15:45	185	6.1	9.64	386.1				
05/13/2010	22:16:15	184	6.2	9.68	389.3				
05/13/2010	22:16:45	197	6.2	9.73	392.4				
05/13/2010	22:17:15	180	6.2	9.75	395.5				
05/13/2010	22:17:45	186	6.1	9.74	398.7				
05/13/2010	22:18:15	211	6.4	9.78	401.8				
05/13/2010	22:18:45	188	6.2	9.76	404.9				
05/13/2010	22:19:15	183	6.4	9.76	408.0				
05/13/2010	22:19:45	201	6.2	9.75	411.2				
05/13/2010	22:20:15	188	6.2	9.73	414.3				
05/13/2010	22:20:45	184	6.2	9.69	417.4				
05/13/2010	22:21:15	188	6.2	9.74	420.5				
05/13/2010	22:21:45	182	6.2	9.77	423.7				
05/13/2010	22:22:15	177	6.2	9.78	426.8				
05/13/2010	22:22:45	205	6.2	9.80	429.9				
05/13/2010	22:23:15	194	6.4	9.79	433.1				
05/13/2010	22:23:45	209	6.2	9.75	436.2				
05/13/2010	22:24:15	194	6.2	9.72	439.3				
05/13/2010	22:24:45	201	6.2	9.73	442.4				
05/13/2010	22:25:15	204	6.4	9.71	445.6				
05/13/2010	22:25:45	179	6.4	9.69	448.7				
05/13/2010	22:26:15	204	6.4	9.76	451.8				
05/13/2010	22:26:45	200	6.2	9.82	455.0				
05/13/2010	22:27:15	214	6.1	9.87	458.1				
05/13/2010	22:27:45	295	7.8	9.90	461.5				
05/13/2010	22:28:15	288	7.8	9.92	465.4				
05/13/2010	22:28:45	315	7.8	9.93	469.3				
05/13/2010	22:29:15	297	7.8	9.93	473.2				
05/13/2010	22:29:45	306	7.8	9.89	477.1				
05/13/2010	22:30:15	286	7.7	9.81	481.0				
05/13/2010	22:30:45	288	7.8	9.78	484.9				
05/13/2010	22:31:15	281	7.7	9.76	488.8				

Well		Field		Job Start		Customer		Job Number	
SGU-8506C-25 F25 496 SGU-8506C-25 F25 496		N Piceance		May/13/2010		Encana Oil & Gas		350176	
Date	Time 24-hr clock	Treating Pressure PSI	Flow Rate B/M	Density LB/G	Volume BBL	Message			
05/13/2010	22:32:15	265	7.8	9.65	496.6				
05/13/2010	22:32:45	258	7.8	9.63	500.5				
05/13/2010	22:33:15	253	7.8	9.58	504.4				
05/13/2010	22:33:45	276	7.8	9.66	508.2				
05/13/2010	22:34:15	284	7.8	9.68	512.1				
05/13/2010	22:34:45	294	7.7	9.85	516.0				
05/13/2010	22:35:15	284	7.8	9.87	519.9				
05/13/2010	22:35:45	297	7.8	9.90	523.8				
05/13/2010	22:36:15	300	7.7	9.90	527.7				
05/13/2010	22:36:45	292	7.9	9.89	531.6				
05/13/2010	22:37:15	297	7.8	9.93	535.5				
05/13/2010	22:37:45	306	7.8	9.95	539.4				
05/13/2010	22:38:15	306	7.7	9.97	543.3				
05/13/2010	22:38:45	305	7.7	9.99	547.2				
05/13/2010	22:39:15	316	7.7	10.06	551.1				
05/13/2010	22:39:45	321	7.8	10.12	555.0				
05/13/2010	22:40:15	322	7.8	10.15	558.9				
05/13/2010	22:40:45	307	7.7	10.15	562.7				
05/13/2010	22:41:15	330	7.7	10.14	566.6				
05/13/2010	22:41:45	321	7.8	10.13	570.5				
05/13/2010	22:42:15	310	7.8	10.09	574.4				
05/13/2010	22:42:45	309	7.8	10.05	578.3				
05/13/2010	22:43:15	306	7.8	10.03	582.2				
05/13/2010	22:43:45	308	7.8	10.05	586.1				
05/13/2010	22:44:15	296	7.7	10.04	590.0				
05/13/2010	22:44:45	289	7.8	9.96	593.9				
05/13/2010	22:45:15	283	7.8	9.91	597.8				
05/13/2010	22:45:45	278	7.8	9.84	601.7				
05/13/2010	22:46:15	302	7.7	9.82	605.6				
05/13/2010	22:46:45	299	7.8	9.72	609.4				
05/13/2010	22:47:15	285	7.7	9.61	613.4				
05/13/2010	22:47:45	291	7.8	9.58	617.2				
05/13/2010	22:48:15	288	7.8	9.58	621.1				
05/13/2010	22:48:45	290	7.8	9.58	625.0				
05/13/2010	22:49:15	298	7.7	9.60	628.9				
05/13/2010	22:49:45	300	7.8	9.61	632.8				
05/13/2010	22:50:15	288	7.8	9.60	636.7				
05/13/2010	22:50:45	284	7.7	9.58	640.6				
05/13/2010	22:51:15	291	7.8	9.60	644.5				
05/13/2010	22:51:45	302	7.7	9.62	648.4				
05/13/2010	22:52:15	303	7.8	9.63	652.3				
05/13/2010	22:52:45	199	7.8	9.63	656.2				
05/13/2010	22:53:15	334	7.8	9.63	660.1				
05/13/2010	22:53:45	221	7.8	9.62	664.0				
05/13/2010	22:54:15	314	7.8	9.62	667.9				
05/13/2010	22:54:45	221	7.8	9.61	671.8				
05/13/2010	22:55:15	335	7.6	9.60	675.6				
05/13/2010	22:55:45	291	7.6	9.61	679.4				
05/13/2010	22:56:15	300	7.6	9.63	683.2				
05/13/2010	22:56:45	304	7.4	9.63	687.0				
05/13/2010	22:57:15	299	7.6	9.63	690.7				
05/13/2010	22:57:45	300	7.6	9.64	694.5				
05/13/2010	22:58:15	311	7.6	9.65	698.3				
05/13/2010	22:58:45	301	7.5	9.56	702.1				

Well		Field		Job Start	Customer		Job Number
SGU-8506C-25 F25 496 SGU-8506C-25 F25 496		N Piceance		May/13/2010	Encana Oil & Gas		350176
Date	Time 24-hr clock	Treating Pressure PSI	Flow Rate B/M	Density LB/G	Volume BBL	Message	
05/13/2010	22:59:45	291	7.5	9.51	709.6		
05/13/2010	23:00:15	306	7.6	9.52	713.4		
05/13/2010	23:00:45	312	7.6	9.52	717.2		
05/13/2010	23:01:15	315	7.6	9.59	721.0		
05/13/2010	23:01:45	322	7.6	9.59	724.7		
05/13/2010	23:02:15	326	7.6	9.62	728.5		
05/13/2010	23:02:45	321	7.6	9.63	732.3		
05/13/2010	23:03:15	320	7.5	9.64	736.1		
05/13/2010	23:03:45	320	7.6	9.67	739.9		
05/13/2010	23:04:15	325	7.5	9.69	743.6		
05/13/2010	23:04:45	312	7.4	9.66	747.4		
05/13/2010	23:05:15	303	7.6	9.66	751.2		
05/13/2010	23:05:45	323	7.6	9.73	755.0		
05/13/2010	23:06:15	326	7.6	9.73	758.7		
05/13/2010	23:06:45	299	7.6	9.64	762.5		
05/13/2010	23:07:15	286	7.6	9.58	766.3		
05/13/2010	23:07:45	299	7.5	9.67	770.1		
05/13/2010	23:08:15	308	7.6	9.65	773.8		
05/13/2010	23:08:45	325	7.5	9.67	777.6		
05/13/2010	23:09:15	328	7.4	9.67	781.4		
05/13/2010	23:09:45	339	7.6	9.66	785.2		
05/13/2010	23:10:15	352	7.6	9.67	789.0		
05/13/2010	23:10:45	348	7.6	9.66	792.7		
05/13/2010	23:11:15	348	7.6	9.67	796.5		
05/13/2010	23:11:45	354	7.5	9.67	800.3		
05/13/2010	23:12:15	371	7.6	9.72	804.1		
05/13/2010	23:12:45	374	7.6	9.76	807.9		
05/13/2010	23:13:15	372	7.6	9.78	811.6		
05/13/2010	23:13:45	385	7.5	9.79	815.4		
05/13/2010	23:14:15	390	7.4	9.79	819.2		
05/13/2010	23:14:45	391	7.6	9.79	823.0		
05/13/2010	23:15:15	377	7.6	9.78	826.8		
05/13/2010	23:15:45	370	7.6	9.78	830.5		
05/13/2010	23:16:15	372	7.5	9.79	834.3		
05/13/2010	23:16:45	387	7.5	9.80	838.1		
05/13/2010	23:16:52					H2O Returns @ 410 Cement Away	
05/13/2010	23:16:52	381	7.6	9.80	839.0		
05/13/2010	23:17:15	395	7.6	9.81	841.9		
05/13/2010	23:17:45	390	7.5	9.81	845.6		
05/13/2010	23:18:15	379	7.5	9.83	849.4		
05/13/2010	23:18:45	380	7.6	9.83	853.2		
05/13/2010	23:19:15	399	7.6	9.83	857.0		
05/13/2010	23:19:45	393	7.5	9.80	860.8		
05/13/2010	23:20:15	380	7.6	9.81	864.5		
05/13/2010	23:20:45	389	7.6	9.82	868.3		
05/13/2010	23:21:15	400	7.6	9.84	872.1		
05/13/2010	23:21:45	410	7.5	9.85	875.9		
05/13/2010	23:22:15	200	4.0	9.87	879.1		
05/13/2010	23:22:45	198	4.0	9.90	881.1		
05/13/2010	23:23:15	183	4.1	9.83	883.2		
05/13/2010	23:23:45	178	4.1	9.81	885.3		
05/13/2010	23:24:15	202	4.1	9.82	887.3		
05/13/2010	23:24:45	196	4.1	9.81	889.3		
05/13/2010	23:25:10					End Tail Slurry	

Well		Field		Job Start	Customer	Job Number
SGU-8506C-25 F25 496 SGU-8506C-25 F25 496		N Piceance		May/13/2010	Encana Oil & Gas	350176
Date	Time 24-hr clock	Treating Pressure PSI	Flow Rate B/M	Density LB/G	Volume BBL	Message
05/13/2010	23:25:11					End Cement Slurry
05/13/2010	23:25:11	182	4.2	9.82	891.1	
05/13/2010	23:25:12					Drop Top Plug
05/13/2010	23:25:12	191	4.2	9.82	891.2	
05/13/2010	23:25:15	170	4.1	9.82	891.4	
05/13/2010	23:25:22					Drop plug on Fly @ 4 bbl/min
05/13/2010	23:25:22	173	4.1	9.83	891.9	
05/13/2010	23:25:23					Start Displacement
05/13/2010	23:25:23	173	4.1	9.83	891.9	
05/13/2010	23:25:29					Pump 5 bbl Mudpush
05/13/2010	23:25:29	190	4.2	9.83	892.4	
05/13/2010	23:25:30					Pump 224 bbl H2O
05/13/2010	23:25:30	203	4.1	9.83	892.4	
05/13/2010	23:25:45	186	4.1	9.83	893.5	
05/13/2010	23:26:15	116	4.1	8.56	895.5	
05/13/2010	23:26:45	125	4.1	8.56	897.6	
05/13/2010	23:27:15	122	4.1	8.45	899.6	
05/13/2010	23:27:45	246	6.0	8.33	902.3	
05/13/2010	23:28:15	292	5.9	8.33	905.2	
05/13/2010	23:28:45	261	5.9	8.38	908.2	
05/13/2010	23:29:15	225	6.0	8.38	911.2	
05/13/2010	23:29:45	317	5.9	8.33	914.2	
05/13/2010	23:30:15	306	6.0	8.59	917.2	
05/13/2010	23:30:45	253	6.0	8.53	920.1	
05/13/2010	23:31:15	266	6.0	8.49	923.1	
05/13/2010	23:31:45	294	5.9	8.45	926.1	
05/13/2010	23:32:15	292	5.9	8.45	929.1	
05/13/2010	23:32:45	308	5.9	8.41	932.1	
05/13/2010	23:33:15	319	6.0	8.40	935.0	
05/13/2010	23:33:45	322	6.0	8.33	938.0	
05/13/2010	23:34:15	418	7.0	8.33	941.1	
05/13/2010	23:34:45	460	7.6	8.33	944.8	
05/13/2010	23:35:15	463	7.6	8.33	948.6	
05/13/2010	23:35:45	450	7.6	8.33	952.4	
05/13/2010	23:36:15	473	7.6	8.33	956.2	
05/13/2010	23:36:45	465	7.7	8.33	960.1	
05/13/2010	23:37:15	488	7.6	8.33	963.9	
05/13/2010	23:37:45	497	7.6	8.33	967.7	
05/13/2010	23:38:15	493	7.6	8.33	971.5	
05/13/2010	23:38:45	509	7.6	8.33	975.3	
05/13/2010	23:39:15	529	7.6	8.33	979.1	
05/13/2010	23:39:45	528	7.6	8.33	983.0	
05/13/2010	23:40:15	545	7.6	8.33	986.8	
05/13/2010	23:40:45	545	7.6	8.33	990.6	
05/13/2010	23:41:15	575	7.8	8.33	994.4	
05/13/2010	23:41:45	586	7.7	8.33	998.2	
05/13/2010	23:42:15	599	7.6	8.33	1002.0	
05/13/2010	23:42:45	601	7.6	8.33	1005.9	
05/13/2010	23:43:15	610	7.7	8.33	1009.7	
05/13/2010	23:43:45	635	7.7	8.33	1013.5	
05/13/2010	23:44:15	644	7.7	8.33	1017.3	
05/13/2010	23:44:45	684	7.6	8.33	1021.1	
05/13/2010	23:45:15	687	7.6	8.33	1025.0	
05/13/2010	23:45:45	742	7.7	8.33	1028.8	

Well		Field		Job Start	Customer		Job Number
SGU-8506C-25 F25 496 SGU-8506C-25 F25 496		N Piceance		May/13/2010	Encana Oil & Gas		350176
Date	Time 24-hr clock	Treating Pressure PSI	Flow Rate B/M	Density LB/G	Volume BBL	Message	
05/13/2010	23:46:45	797	7.7	8.33	1036.4		
05/13/2010	23:47:15	837	7.6	8.33	1040.2		
05/13/2010	23:47:45	851	7.7	8.33	1044.0		
05/13/2010	23:48:15	902	7.6	8.33	1047.8		
05/13/2010	23:48:45	996	8.2	8.32	1051.8		
05/13/2010	23:49:15	940	8.2	8.32	1055.9		
05/13/2010	23:49:45	1050	8.2	8.33	1060.0		
05/13/2010	23:50:15	990	5.6	8.33	1062.9		
05/13/2010	23:50:45	1057	5.6	8.32	1065.7		
05/13/2010	23:51:15	1010	5.5	8.32	1068.4		
05/13/2010	23:51:45	1135	5.6	8.33	1071.2		
05/13/2010	23:52:15	1160	5.2	8.33	1073.9		
05/13/2010	23:52:45	1111	5.1	8.32	1076.5		
05/13/2010	23:53:15	1170	5.2	8.33	1079.0		
05/13/2010	23:53:45	1202	5.2	8.32	1081.6		
05/13/2010	23:54:15	1122	3.9	8.33	1083.7		
05/13/2010	23:54:45	1082	3.9	8.33	1085.7		
05/13/2010	23:55:15	1141	3.9	8.32	1087.7		
05/13/2010	23:55:45	1155	3.8	8.32	1089.6		
05/13/2010	23:56:15	1169	3.8	8.32	1091.5		
05/13/2010	23:56:45	904	3.8	8.33	1093.4		
05/13/2010	23:57:15	1003	4.0	8.32	1095.3		
05/13/2010	23:57:45	799	4.2	8.33	1097.4		
05/13/2010	23:58:15	954	4.3	8.32	1099.5		
05/13/2010	23:58:45	858	4.2	8.33	1101.7		
05/13/2010	23:59:15	942	4.3	8.32	1103.8		
05/13/2010	23:59:45	948	4.3	8.32	1105.9		
05/14/2010	00:00:15	945	4.3	8.33	1108.1		
05/14/2010	00:00:45	969	4.3	8.33	1110.2		
05/14/2010	00:01:15	938	4.2	8.33	1112.3		
05/14/2010	00:01:45	1028	4.3	8.33	1114.5		
05/14/2010	00:02:15	808	2.0	8.33	1116.4		
05/14/2010	00:02:45	796	2.0	8.33	1117.4		
05/14/2010	00:03:15	774	2.0	8.33	1118.4		
05/14/2010	00:03:45	800	2.0	8.33	1119.5		
05/14/2010	00:04:14					Mud Returns @ 520 Cement Away	
05/14/2010	00:04:14	817	2.0	8.33	1120.4		
05/14/2010	00:04:15					Lost Returns @ 165 Disp Away	
05/14/2010	00:04:15	870	2.0	8.33	1120.5		
05/14/2010	00:04:45	833	2.0	8.33	1121.5		
05/14/2010	00:05:15	856	2.0	8.33	1122.5		
05/14/2010	00:05:45	918	2.0	8.33	1123.5		
05/14/2010	00:06:15	908	2.0	8.33	1124.6		
05/14/2010	00:06:40					Bump Top Plug	
05/14/2010	00:06:40	1405	2.0	8.33	1125.4		
05/14/2010	00:06:43					End Displacement	
05/14/2010	00:06:43	1522	2.0	8.33	1125.5		
05/14/2010	00:06:45	1513	1.1	8.33	1125.6		
05/14/2010	00:07:15	1502	0.0	8.33	1125.6		
05/14/2010	00:07:45	1494	0.0	8.33	1125.6		
05/14/2010	00:08:15	1495	0.0	8.33	1125.6		
05/14/2010	00:08:45	1494	0.0	8.33	1125.6		
05/14/2010	00:09:15	1438	0.0	8.33	1125.6		
05/14/2010	00:09:45	4	0.0	8.33	1125.6		

Well		Field		Job Start		Customer		Job Number	
SGU-8506C-25 F25 496 SGU-8506C-25 F25 496		N Piceance		May/13/2010		Encana Oil & Gas		350176	
Date	Time 24-hr clock	Treating Pressure PSI	Flow Rate B/M	Density LB/G	Volume BBL	Message			
05/14/2010	00:10:45	3	0.0	8.33	1125.6				
05/14/2010	00:11:15	3	0.0	8.33	1125.6				
05/14/2010	00:11:45	3	0.0	8.33	1125.6				
05/14/2010	00:12:15	3	0.0	8.33	1125.6				
05/14/2010	00:12:45	3	0.0	8.33	1125.6				
05/14/2010	00:13:15	3	0.0	8.33	1125.6				
05/14/2010	00:13:45	3	0.0	8.33	1125.6				
05/14/2010	00:14:15	162	4.8	8.33	1127.1				
05/14/2010	00:14:45	79	4.4	8.33	1129.5				
05/14/2010	00:15:15	173	5.4	8.33	1131.0				
05/14/2010	00:15:35					1.5 bbl back			
05/14/2010	00:15:35	169	5.4	8.33	1132.8				
05/14/2010	00:15:45	170	5.4	8.33	1133.8				
05/14/2010	00:16:15	166	5.0	8.32	1135.9				
05/14/2010	00:16:45	23	1.5	8.33	1138.3				
05/14/2010	00:17:15	181	5.0	8.33	1140.1				
05/14/2010	00:17:45	8	0.0	8.33	1141.4				
05/14/2010	00:18:15	3	0.0	8.33	1141.4				
05/14/2010	00:18:45	4	0.0	8.33	1141.4				
05/14/2010	00:19:15	4	0.0	8.33	1141.4				
05/14/2010	00:19:45	4	0.0	8.33	1141.4				
05/14/2010	00:20:15	3	0.0	8.33	1141.4				
05/14/2010	00:20:45	3	0.0	8.33	1141.4				
05/14/2010	00:21:15	3	0.0	8.33	1141.4				
05/14/2010	00:21:45	3	0.0	8.33	1141.4				
05/14/2010	00:22:15	3	0.0	8.33	1141.4				
05/14/2010	00:22:45	3	0.0	8.33	1141.4				
05/14/2010	00:23:15	2	0.0	8.33	1141.4				
05/14/2010	00:23:45	3	0.0	8.33	1141.4				
05/14/2010	00:24:15	3	0.0	8.33	1141.4				
05/14/2010	00:24:45	2	0.0	8.33	1141.4				
05/14/2010	00:25:15	2	0.0	8.33	1141.4				
05/14/2010	00:25:45	2	0.0	8.33	1141.4				
05/14/2010	00:26:15	2	0.0	8.33	1141.4				
05/14/2010	00:26:45	1	0.0	8.33	1141.4				
05/14/2010	00:27:15	29	2.2	8.27	1141.8				
05/14/2010	00:27:45	28	2.2	8.29	1142.9				
05/14/2010	00:28:15	42	2.2	8.30	1143.9				
05/14/2010	00:28:45	46	2.2	8.33	1145.0				
05/14/2010	00:29:15	43	2.2	8.33	1146.1				
05/14/2010	00:29:45	43	2.2	8.33	1147.2				
05/14/2010	00:30:15	23	2.2	8.19	1148.2				
05/14/2010	00:53:54	-3	0.0	8.32	1148.9				
05/14/2010	00:53:54					Pump out Parasite line w/ H2O			

<b>Well</b> SGU-8506C-25 F25 496 SGU-8506C-25 F25 496	<b>Field</b> N Piceance	<b>Job Start</b> May/13/2010	<b>Customer</b> Encana Oil & Gas	<b>Job Number</b> 350176
--	----------------------------	---------------------------------	-------------------------------------	-----------------------------

### Post Job Summary

Average Pump Rates, bbl/min					Volume of Fluid Injected, bbl			
<b>Slurry</b> 5.0	<b>N2</b>	<b>Mud</b>	<b>Maximum Rate</b> 8.0	<b>Total Slurry</b> 558.0	<b>Mud</b> 160.0	<b>Spacer</b> 90.0	<b>N2</b>	
Treating Pressure Summary, psi					Breakdown Fluid			
<b>Maximum</b> 3500	<b>Final</b> 1100	<b>Average</b> 300	<b>Bump Plug to</b> 1522	<b>Breakdown</b>	<b>Type</b> FreshWater	<b>Volume</b> 786.0 bbl	<b>Density</b> 8.34 lb/gal	
<b>Avg. N2 Percent</b>	<b>Designed Slurry Volume</b> 558.0 bbl		<b>Displacement</b> 229.0 bbl	<b>Mix Water Temp</b> 60 degF	<b>Cement Circulated to Surface?</b> <input type="checkbox"/>	<b>Volume</b> 240.0 bbl		
					<b>Washed Thru Perfs</b> <input type="checkbox"/>	<b>To</b>		
<b>Customer or Authorized Representative</b> Norm McCreary			<b>Schlumberger Supervisor</b> B. Farnham			<b>Circulation Lost</b> <input checked="" type="checkbox"/>	<b>Job Completed</b> <input checked="" type="checkbox"/>	
					-	-		