

Cementing Cover Sheet

TO: _____
FROM: **Robert Brost**
REQUESTED ON LOCATION: **28-Sep-2008 20:30 MST**
CUSTOMER: **CHEVRON - MID-CONTINENT EBIZ**
WELL NAME/NBR/LEASE: **SKR , 598-36-AV-21 / SKR**

TABLE OF CONTENTS:

Pump schedule chart
 Job Summary
 Job Log
 Field ticket

MBU LEADER: BE SURE THAT YOU HAVE RECEIVED EACH OF THE DOCUMENTS LISTED ABOVE. IF NOT, CONTACT CENTRAL DISPATCH IMMEDIATELY.

The Road to Excellence Starts with Safety

Sold To #: 338668	Ship To #: 2666611	Quote #:	Sales Order #: 6205632
Customer: CHEVRON - MID-CONTINENT EBIZ	Customer Rep: Morgan, Randy		
Well Name: SKR	Well #: 598-36-AV-21	API/UWI #: 05-045-16279	
Field: SKINNER RIDGE	City (SAP): PARACHUTE	County/Parish: Garfield	State: Colorado
Lat: N 39.573 deg. OR N 39 deg. 34 min. 21.587 secs.	Long: W 108.34 deg. OR W -109 deg. 39 min. 36.13 secs.		
Contractor: H&P 318	Rig/Platform Name/Num: H&P 318		
Job Purpose: Cement Surface Casing			
Well Type: Development Well	Job Type: Cement Surface Casing		
Sales Person: HARTLEY, RICHARD	Srv Supervisor: BROST, ROBERT	MBU ID Emp #: 394382	

Job Personnel

HES Emp Name	Exp Hrs	Emp #	HES Emp Name	Exp Hrs	Emp #	HES Emp Name	Exp Hrs	Emp #
BEDFORD, STEPHEN A	9	342184	BROST, ROBERT W	9	394382	BROWN, TRAVIS A	9	396848
GAMBLE, BENJAMIN T	9	446666						

Equipment

HES Unit #	Distance-1 way	HES Unit #	Distance-1 way	HES Unit #	Distance-1 way	HES Unit #	Distance-1 way
10744549	120 mile	10804575	120 mile	10829469	120 mile	10872429	120 mile
10897909	120 mile						

Job Hours

Date	On Location Hours	Operating Hours	Date	On Location Hours	Operating Hours	Date	On Location Hours	Operating Hours
9/28/08	4	1						

TOTAL Total is the sum of each column separately

Job				Job Times			
Formation Name	Top	Bottom		Called Out	Date	Time	Time Zone
Formation Depth (MD)				On Location	28 - Sep - 2008	13:00	MST
Form Type		BHST		Job Started	28 - Sep - 2008	20:00	MST
Job depth MD	1035. ft	Job Depth TVD	1050. ft	Job Completed	28 - Sep - 2008	21:47	MST
Water Depth		Wk Ht Above Floor	4. ft	Departed Loc	28 - Sep - 2008	22:40	MST
Perforation Depth (MD)	From	To			28 - Sep - 2008	23:59	MST

Well Data

Description	New / Used	Max pressure psig	Size in	ID in	Weight lbm/ft	Thread	Grade	Top MD ft	Bottom MD ft	Top TVD ft	Bottom TVD ft
-------------	------------	-------------------	---------	-------	---------------	--------	-------	-----------	--------------	------------	---------------

Sales/Rental/3rd Party (HES)

Description	Qty	Qty uom	Depth	Supplier
PLUG,CMTG,TOP,8 5/8,HWE,7.20 MIN/8.09 MA	1	EA		
ADC (AUTO DENSITY CTRL) SYS, /JOB,ZI	1	JOB		
PORT. DAS W/CEMWIN;ACQUIRE W/HES, ZI	1	JOB		

Tools and Accessories

Type	Size	Qty	Make	Depth	Type	Size	Qty	Make	Depth	Type	Size	Qty	Make
Guide Shoe					Packer					Top Plug	8 5/8"	1	
Float Shoe					Bridge Plug					Bottom Plug			
Float Collar					Retainer					SSR plug set			
Insert Float										Plug Container	8 5/8"	1	
Stage Tool										Centralizers			

Miscellaneous Materials

Gelling Agt	Conc	Surfactant	Conc	Acid Type	Qty	Conc	%
Treatment Fld	Conc	Inhibitor	Conc	Sand Type	Size	Qty	

Fluid Data									
Stage/Plug #: 1									
Fluid #	Stage Type	Fluid Name	Qty	Qty uom	Mixing Density lbm/gal	Yield ft ³ /sk	Mix Fluid Gal/sk	Rate bbl/min	Total Mix Fluid Gal/sk
1	PolyFlake Dyed Spacer		20.00	bbl	.	.0	.0	6	
2	VersaCem Lead Cement	VERSACEM (TM) SYSTEM (452010)	161.0	sacks	12.3	2.37	13.76	6	13.45
	0.125 lbm	POLY-E-FLAKE (101216940)							
	0.25 %	D-AIR 3000 (101007446)							
	13.448 Gal	FRESH WATER							
3	VersaCem Tail Cement	VERSACEM (TM) SYSTEM (452010)	164.0	sacks	12.8	2.11	11.79	6	11.48
	0.125 lbm	POLY-E-FLAKE (101216940)							
	0.25 %	D-AIR 3000 (101007446)							
	11.483 Gal	FRESH WATER							
4	Fresh Water Displacement		63	bbl	.	.0	.0	10	
Calculated Values		Pressures		Volumes					
Displacement	63	Shut In: Instant		Lost Returns	no	Cement Slurry	119	Pad	
Top Of Cement	surface	5 Min		Cement Returns	48	Actual Displacement	63	Treatment	
Frac Gradient		15 Min		Spacers	20	Load and Breakdown		Total Job	
Rates									
Circulating	rig	Mixing	6	Displacement	10	Avg. Job	6		
Cement Left In Pipe	Amount	47.13 ft	Reason	Shoe Joint					
Frac Ring # 1 @	ID	Frac ring # 2 @	ID	Frac Ring # 3 @	ID	Frac Ring # 4 @	ID		
The Information Stated Herein Is Correct				Customer Representative Signature					

The Road to Excellence Starts with Safety

The Road to Excellence Starts With Safety

Sold To #: 338668	Ship To #: 2666611	Quote #:	Sales Order #: 6205632
Customer: CHEVRON - MID-CONTINENT EBIZ		Customer Rep: Morgan, Randy	
Well Name: SKR		Well #: 598-36-AV-21	API/UWI #: 05-045-16279
Field: SKINNER RIDGE	City (SAP): PARACHUTE	County/Parish: Garfield	State: Colorado
Legal Description:			
Lat: N 39.573 deg. OR N 39 deg. 34 min. 21.587 secs.		Long: W 108.34 deg. OR W -109 deg. 39 min. 36.13 secs.	
Contractor: H&P 318		Rig/Platform Name/Num: H&P 318	
Job Purpose: Cement Surface Casing			Ticket Amount:
Well Type: Development Well		Job Type: Cement Surface Casing	
Sales Person: HARTLEY, RICHARD		Srv Supervisor: BROST, ROBERT	MBU ID Emp #: 394382

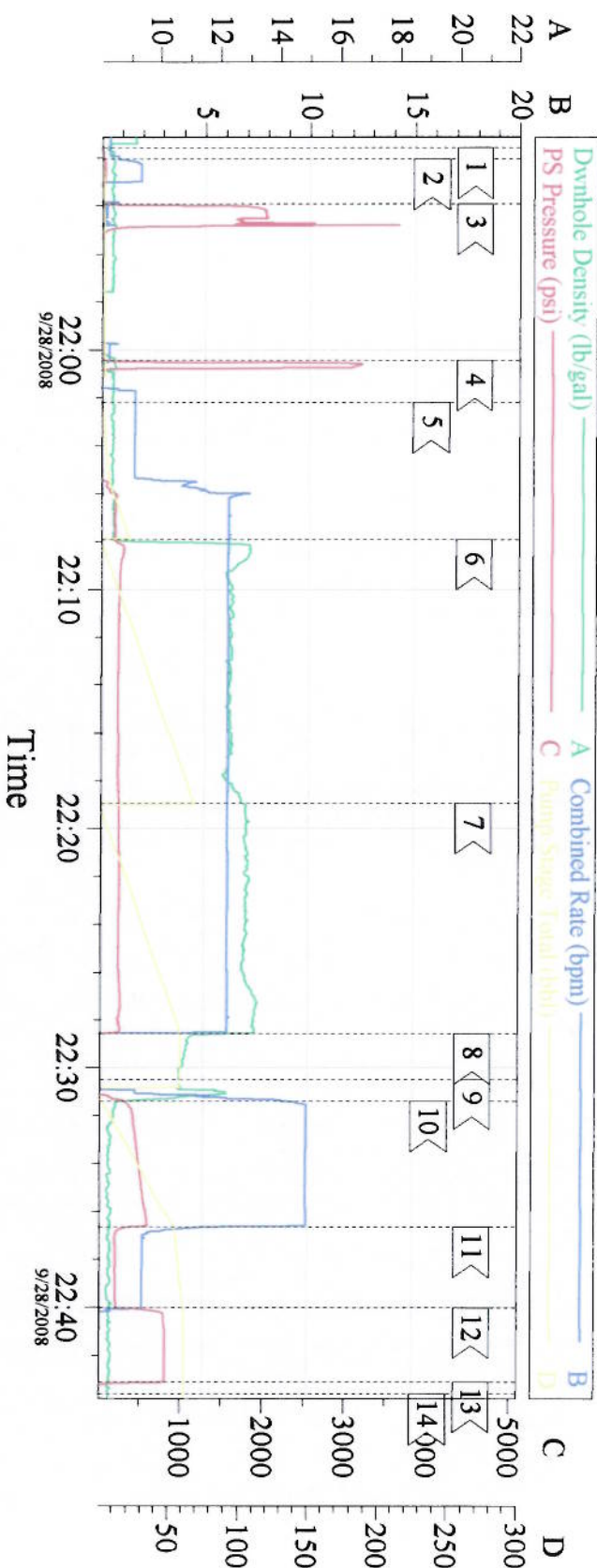
Activity Description	Date/Time	Cht #	Rate bbl/min	Volume bbl		Pressure psig		Comments
				Stage	Total	Tubing	Casing	
Call Out	09/28/2008 14:00							elite #11 8 5/8"surface 1050td 1035tp 47.13shoe 9.2ppg mud
Safety Huddle	09/28/2008 17:00							no cell phones use seatbelts watch following distance
Arrive At Loc	09/28/2008 20:00							
Assessment Of Location Safety Meeting	09/28/2008 20:15							walk threw rig up looking for hazzards mud on side of day tank
Rig-Up Equipment	09/28/2008 20:20							good crew on rig verry safe
Rig-Up Completed	09/28/2008 21:10							
Safety Meeting - Pre Job	09/28/2008 21:30							attn by rig crew pump crew comp. rep.
Start Job	09/28/2008 21:47							fill lines fresh water
Pressure Test	09/28/2008 21:56						3000.0	first test bad chickens changed out good test no leaks
Pump Spacer 1	09/28/2008 21:57		6	20			180.0	poly flak-dye in spacer
Pump Lead Cement	09/28/2008 22:04		6	68			241.0	161sks 12.3ppg 2.37yield 13.76h2o
Pump Tail Cement	09/28/2008 22:15		6	62			240.0	164sks 12.8ppg 2.11yield 11.79h2o
Shutdown	09/28/2008 22:25							good circ. during job
Drop Top Plug	09/28/2008 22:27							48 bls cmt to surface
Pump Displacement	09/28/2008 22:27		10	63			584.0	fresh water slow rate last 10 bls

Cementing Job Log

Activity Description	Date/Time	Cht #	Rate bbl/min	Volume bbl		Pressure psig		Comments
				Stage	Total	Tubing	Casing	
Bump Plug	09/28/2008 22:36						206.0	took 500 over
Check Floats	09/28/2008 22:39						813.0	floats held
End Job	09/28/2008 22:40							
Safety Meeting - Pre Rig-Down	09/28/2008 22:50							
Safety Meeting - Departing Location	09/28/2008 23:59							thank you Robert Brost and crew

Chevron

8 5/8" surface



Customer:	chevron	Job Date:	9/28/08	Ticket #:	6205632
Well Description:	surface	CEMENTER	Robert Brost	ADC USED	YES
LEASE	SKR	WELL #	598-36-AV-21	CO REP	

CemWin v1.7.2
28-Sep-08 22:55