

The Road to Excellence Starts with Safety

Sold To #: 338668	Ship To #: 2666611	Quote #:	Sales Order #: 6240456
Customer: CHEVRON - MID-CONTINENT EBIZ	Customer Rep:		
Well Name: SKR	Well #: 598-36-AV-21	API/UWI #: 05-045-16279	
Field: SKINNER RIDGE	City (SAP): PARACHUTE	County/Parish: Garfield	State: Colorado
Lat: N 39.573 deg. OR N 39 deg. 34 min. 21.587 secs.	Long: W 108.34 deg. OR W -109 deg. 39 min. 36.13 secs.		
Contractor: H&P 318	Rig/Platform Name/Num: H&P 318		
Job Purpose: Cement Production Casing			
Well Type: Development Well	Job Type: Cement Production Casing		
Sales Person: HARTLEY, RICHARD	Srv Supervisor: CALDWELL, JEFFREY	MBU ID Emp #: 369111	

Job Personnel

HES Emp Name	Exp Hrs	Emp #	HES Emp Name	Exp Hrs	Emp #	HES Emp Name	Exp Hrs	Emp #
CALDWELL, JEFFREY S	7	369111	HOEFER, BRYAN D	7	415775	LEDON, GUILLERMO S	7	407910
MONGER, RICHARD Loomis	7	385430						

Equipment

HES Unit #	Distance-1 way	HES Unit #	Distance-1 way	HES Unit #	Distance-1 way	HES Unit #	Distance-1 way
10567589C	120 mile	10719782	120 mile	10741109	120 mile	10867322	120 mile
10995027	120 mile	10998512	120 mile				

Job Hours

Date	On Location Hours	Operating Hours	Date	On Location Hours	Operating Hours	Date	On Location Hours	Operating Hours
10/15/08	7	2						

TOTAL Total is the sum of each column separately

Job				Job Times			
Formation Name	Formation Depth (MD)	Top	Bottom	Called Out	Date	Time	Time Zone
Form Type			BHST	On Location	15 - Oct - 2008	02:00	MST
Job depth MD	6440. ft		Job Depth TVD	Job Started	15 - Oct - 2008	05:39	MST
Water Depth			Wk Ht Above Floor	Job Completed	15 - Oct - 2008	06:59	MST
Perforation Depth (MD)	From		To	Departed Loc	15 - Oct - 2008	09:00	MST

Well Data

Description	New / Used	Max pressure psig	Size in	ID in	Weight lbm/ft	Thread	Grade	Top MD ft	Bottom MD ft	Top TVD ft	Bottom TVD ft
-------------	------------	-------------------	---------	-------	---------------	--------	-------	-----------	--------------	------------	---------------

Sales/Rental/3rd Party (HES)

Description	Qty	Qty uom	Depth	Supplier
PLUG,CMTG,TOP,4 1/2,HWE,3.65 MIN/4.14 MA	1	EA		

Tools and Accessories

Type	Size	Qty	Make	Depth	Type	Size	Qty	Make	Depth	Type	Size	Qty	Make
Guide Shoe					Packer					Top Plug	4.5	1	
Float Shoe					Bridge Plug					Bottom Plug			
Float Collar					Retainer					SSR plug set			
Insert Float										Plug Container	4.5	1	
Stage Tool										Centralizers			

Miscellaneous Materials

Gelling Agt	Conc	Surfactant	Conc	Acid Type	Qty	Conc	%
Treatment Fld	Conc	Inhibitor	Conc	Sand Type	Size	Qty	

Fluid Data									
Stage/Plug #: 1									
Fluid #	Stage Type	Fluid Name	Qty	Qty uom	Mixing Density lbm/gal	Yield ft ³ /sk	Mix Fluid Gal/sk	Rate bbl/min	Total Mix Fluid Gal/sk
1	Dyed PolyFlake Spacer		50.0	bbl	8.33	.0	.0	8.0	
2	Lead Cement	EXTENDACEM (TM) SYSTEM (452981)	448.0	sacks	12.8	1.55	7.15	8.0	7.67
	7.674 Gal	FRESH WATER							
3	Tail Cement	EXTENDACEM (TM) SYSTEM (452981)	620.0	sacks	13.2	1.43	6.19	8.0	7.0
4	KCL Displacement		99.1	bbl	.	.0	.0	8.0	
Calculated Values		Pressures		Volumes					
Displacement	99.1	Shut In: Instant		Lost Returns	0	Cement Slurry	287	Pad	
Top Of Cement	SURFACE	5 Min		Cement Returns	0	Actual Displacement	96	Treatment	
Frac Gradient		15 Min		Spacers	50	Load and Breakdown		Total Job	433
Rates									
Circulating		Mixing		Displacement		Avg. Job			
Cement Left In Pipe	Amount	45.31 ft	Reason	Shoe Joint					
Frac Ring # 1 @	ID	Frac ring # 2 @	ID	Frac Ring # 3 @	ID	Frac Ring # 4 @	ID		
The Information Stated Herein Is Correct				Customer Representative Signature					

The Road to Excellence Starts with Safety

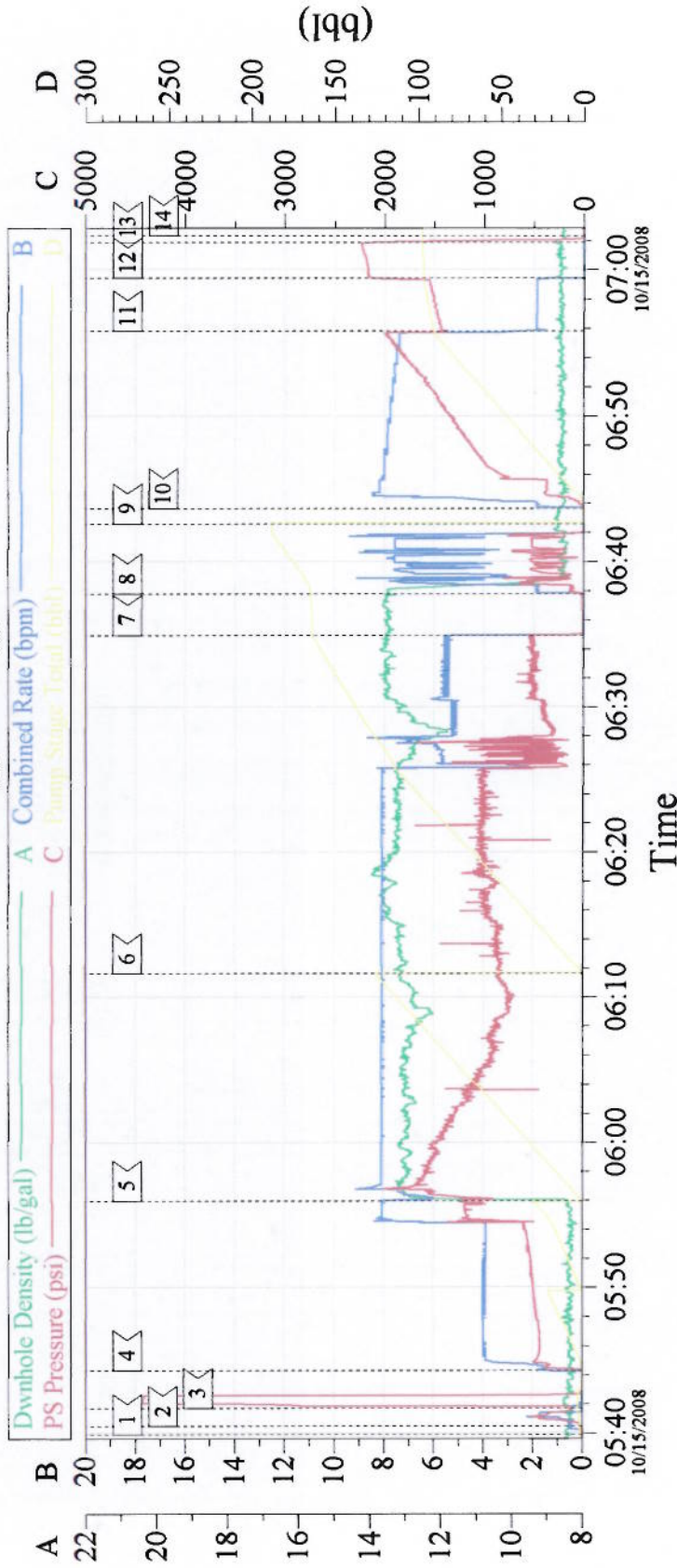
Sold To #: 338668	Ship To #: 2666611	Quote #:	Sales Order #: 6240456
Customer: CHEVRON - MID-CONTINENT EBIZ	Customer Rep:		
Well Name: SKR	Well #: 598-36-AV-21	API/UWI #: 05-045-16279	
Field: SKINNER RIDGE	City (SAP): PARACHUTE	County/Parish: Garfield	State: Colorado
Legal Description:			
Lat: N 39.573 deg. OR N 39 deg. 34 min. 21.587 secs.		Long: W 108.34 deg. OR W -109 deg. 39 min. 36.13 secs.	
Contractor: H&P 318	Rig/Platform Name/Num: H&P 318		
Job Purpose: Cement Production Casing	Ticket Amount:		
Well Type: Development Well	Job Type: Cement Production Casing		
Sales Person: HARTLEY, RICHARD	Srv Supervisor: CALDWELL, JEFFREY	MBU ID Emp #: 369111	

Activity Description	Date/Time	Cht #	Rate bbl/min	Volume bbl		Pressure psig		Comments
				Stage	Total	Tubing	Casing	
Call Out	10/14/2008 22:00							ELITE #3
Crew Leave Yard	10/15/2008 00:00							PLUG CONTAINER #D0094
Arrive At Loc	10/15/2008 02:00							CASING WAS STILL BEIN RUN.
Assessment Of Location Safety Meeting	10/15/2008 02:05							
Rig-Up Equipment	10/15/2008 02:15							
Safety Huddle	10/15/2008 05:15							
Start Job	10/15/2008 05:39							TD:6460 TP:6440 SJ:45.31 MUD 10.4 PPG 7 7/8 INCH HOLE
Prime Pumps	10/15/2008 05:40		2	2			300.0	H2O
Test Lines	10/15/2008 05:41						4500.0	
Pump Spacer 1	10/15/2008 05:44		8	50	50		1195.0	H2O. FIRST 20 BBLS POLYFLAKE AND DYE.
Pump Lead Cement	10/15/2008 05:55		8	123.7	125		860.0	448 SKS 13.2 PRG 1.55 CUFT/SAK 7.15 GAL/SAK
Pump Tail Cement	10/15/2008 06:11		8	157.9	162		410.0	620 SKS 13.2 PPG 1.43 CUFT/SAK 7.15 GAL/SAK
Shutdown	10/15/2008 06:34							
Clean Lines	10/15/2008 06:37							H2O
Drop Plug	10/15/2008 06:42							PLUG AWAY

Cementing Job Log

Activity Description	Date/Time	Cht #	Rate bbl/min	Volume bbl		Pressure psig		Comments
				Stage	Total	Tubing	Casing	
Pump Displacement	10/15/2008 06:43		8	99.1	97		1850.0	H2O
Slow Rate	10/15/2008 06:55		2	89	89		1430.0	
Bump Plug	10/15/2008 06:59		2	99.1	97		2190.0	PLUG BUMPED
Check Floats	10/15/2008 07:01							FLOATS HELD. 1/2 BBL BACK. GOOD CIRCULATION THROUGH OUT JOB.
End Job	10/15/2008 07:02							THANK YOU FOR CHOOSING HALLIBURTON JEFF CALDWELL AND CREW.

4 1/2" Longstring



Event Log

Intersection	PP	Intersection	PP
1 Start Job	05:39:54 1.000	2 Prime Lines	05:40:28 15.68
4 Pump Spacer	05:44:19 16.22	5 Pump Lead Cement	05:55:59 1200
7 Shut Down	06:34:56 154.9	8 Clean Lines	06:37:47 39.82
10 Pump Displacement	06:43:39 -3.000	11 Slow Rate	06:55:50 1395
13 Check Floats/Floats Held	07:01:54 1922	14 End Job	07:02:20 4.000
		3 Test Lines	05:41:42 103.0
		6 Pump Tail Cement	06:11:38 843.1
		9 Drop Top Plug	06:42:36 -3.000
		12 Bump Plug	06:59:27 2153

Customer: Chevron	Job Date: 10/15/08	Ticket #: 6240456
Well Number: SKR 598-36-AV-21	Job Type: 4.5 Production	ADC Used: Yes
Supervisor: Jeff Caldwell	Company Rep.: Brent Swank	Pump/Operator Elite 3/Brian Hoefler

CemWin v1.7.2
15-Oct-08 07:45