

---

# **CHEVRON - MID-CONTINENT EBIZ**

---

**SKR 598-36-AV-17  
PICEANCE  
Garfield County , Colorado**

## **Cement Production Casing**

**06-Oct-2008**

### **Job Site Documents**





Fluid Data									
Stage/Plug #: 1									
Fluid #	Stage Type	Fluid Name	Qty	Qty uom	Mixing Density lbm/gal	Yield ft <sup>3</sup> /sk	Mix Fluid Gal/sk	Rate bbl/min	Total Mix Fluid Gal/sk
1	Dye and Polyflake Spacer		50.0	bbl	8.33	.0	.0	.0	
2	Lead Cement	VARICEM (TM) CEMENT (452009)	383.0	sacks	12.8	1.55	7.15		7.15
	8.025 Gal	FRESH WATER							
3	Tail Cement	EXTENDACEM (TM) SYSTEM (452981)	600.0	sacks	13.2	1.43	6.19		6.19
	Gal	FRESH WATER							
4	KCL Displacement		101.2	bbl	.	.0	.0	.0	
Calculated Values		Pressures		Volumes					
Displacement	101.2	Shut In: Instant		Lost Returns	?	Cement Slurry	258	Pad	
Top Of Cement	230	5 Min		Cement Returns	0	Actual Displacement	101	Treatment	
Frac Gradient		15 Min		Spacers	50	Load and Breakdown		Total Job	455
Rates									
Circulating		Mixing	8	Displacement	10	Avg. Job	9		
Cement Left In Pipe	Amount	43.83 ft	Reason	Shoe Joint					
Frac Ring # 1 @	ID	Frac ring # 2 @	ID	Frac Ring # 3 @	ID	Frac Ring # 4 @	ID		
The Information Stated Herein Is Correct				Customer Representative Signature					

*The Road to Excellence Starts with Safety*

Sold To #: 338668	Ship To #: 2666607	Quote #:	Sales Order #: 6195589
Customer: CHEVRON - MID-CONTINENT EBIZ		Customer Rep: Meier, Dan	
Well Name: SKR	Well #: 598-36-AV-17	API/UWI #:	
Field: PICEANCE	City (SAP): PARACHUTE	County/Parish: Garfield	State: Colorado
Legal Description:			
Lat: N 0 deg. OR N 0 deg. 0 min. 0 secs.		Long: E 0 deg. OR E 0 deg. 0 min. 0 secs.	
Contractor: H&P 316	Rig/Platform Name/Num: H&P 316		
Job Purpose: Cement Production Casing		Ticket Amount:	
Well Type: Development Well	Job Type: Cement Production Casing		
Sales Person: HARTLEY, RICHARD	Srv Supervisor: GATLIN, STANLEY	MBU ID Emp #: 344701	

Activity Description	Date/Time	Cht #	Rate bbl/min	Volume bbl		Pressure psig		Comments
				Stage	Total	Tubing	Casing	
Arrive at Location from Other Job or Site	10/05/2008 22:00							
Assessment Of Location Safety Meeting	10/05/2008 22:10							
Spot Equipment	10/05/2008 22:20							HES pump (TC-4) - 660 - silo - pick-up
Rig-Up Equipment	10/05/2008 22:30							Iron to rig, iron to pit, water lines, bulk lines, ADC line
Rig-Up Equipment	10/06/2008 00:30							Blow Freuhauf and 400 into bin. Freuhauf arrived at 0030. Had to repair bulk delivery system on Freuhauf.
Rig-Up Completed	10/06/2008 02:50							
Pre-Job Safety Meeting	10/06/2008 03:00							Discussed job procedure and safety concerns
Start Job	10/06/2008 03:18							
Test Lines	10/06/2008 03:22						4000.0	
Pump Spacer 1	10/06/2008 03:24		6	50			960.0	Fresh Water with Dye & Polyflake
Pump Lead Cement	10/06/2008 03:48		8	105.7			1040.0	383 sks of Varicem @ 12.8# - 1.55 yield - 7.15 H2O requirement
Pump Tail Cement	10/06/2008 04:08		8	152.8			780.0	600 sks of Varicem @ 13.2# - 1.43 yield - 6.19 H2O requirement
Shutdown	10/06/2008 04:29							
Clean Lines	10/06/2008 04:30							
Drop Top Plug	10/06/2008 04:34							



## Cementing Job Log

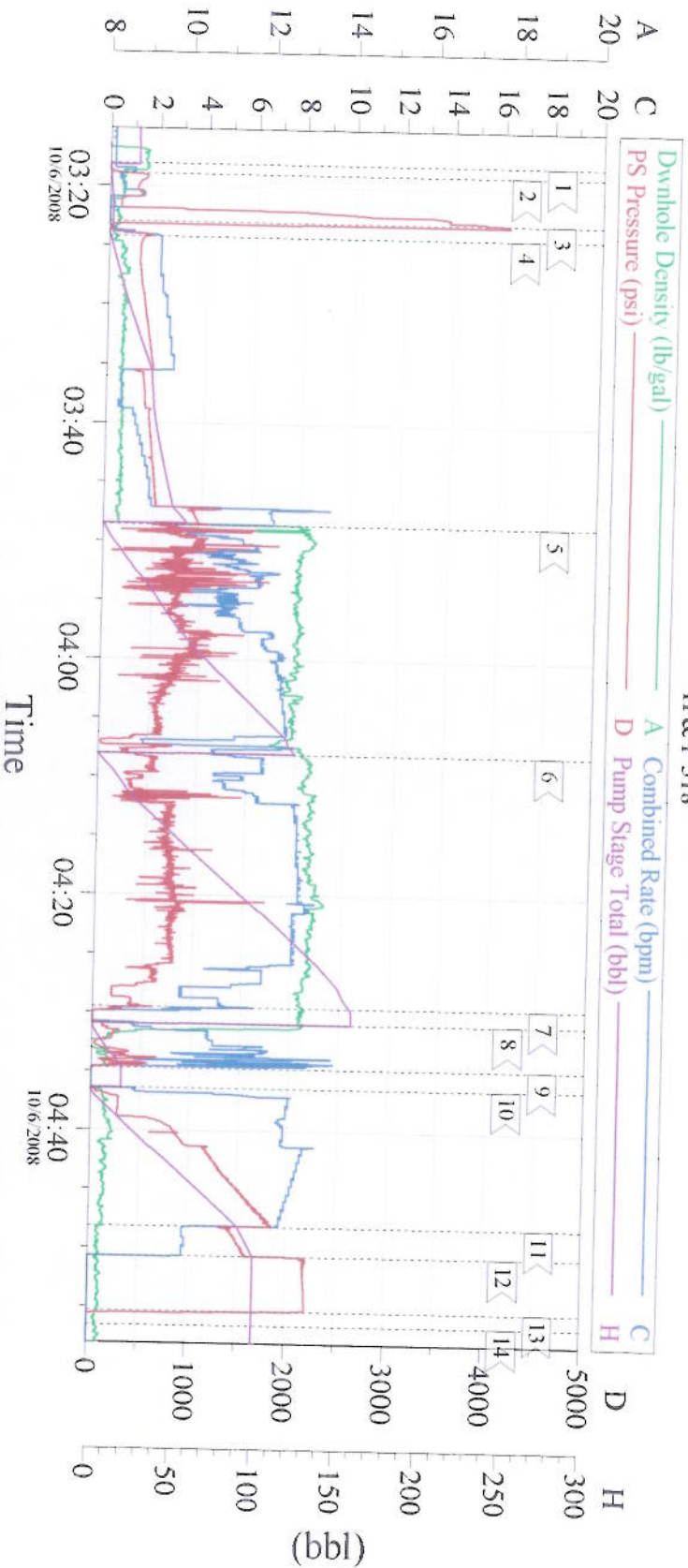
Pump Displacement	10/06/2008 04:36		10	101.2			1890. 0	Fresh water with Potassium Chloride
Slow Rate	10/06/2008 04:48		4	90			1370. 0	
Bump Plug	10/06/2008 04:50		4	101.2			1560. 0	
Check Floats	10/06/2008 04:55						2200. 0	Floats held
End Job	10/06/2008 05:00							

TD-6600 - TP - 6574 - Shoe - 43.83 - Mud - 10.4# - Rig circulated for three hour before job. Casing remained stationary. Good circulation throughout job. Plug landed at calculated displacement and floats held.

Thank you for using Grand Junction Halliburton  
Stan Gatlin & Crew

# 4 1/2" PRODUCTION

H & P 318



## Event Log

1	Start Job	03:18:07	2	Prime Lines	03:18:57	3	Test Lines	03:22:58
4	Start Spacer	03:24:13	5	Start Lead Cement	03:48:37	6	Start Tail Cement	04:08:03
7	Shut Down	04:29:33	8	Clean Lines	04:30:54	9	Drop Plug	04:34:44
10	Start Displacement	04:36:23	11	Slow Rate	04:48:10	12	Bump Plug	04:50:39
13	Check Floats	04:55:18	14	End Job	04:56:33			

Customer: CHEVRON  
Service Supervisor: Stan Gatlin  
Operator: Troy Anglesstein

Job Date: 10/05/08  
Real Time: Yes  
Equipment: TC-4

Ticket #: 6195581  
ADC Used: Yes  
Company Rep: Elmer Tatum

CemWin v1.7.2  
06-Oct-08 07:01