
CHEVRON - MID-CONTINENT EBIZ

**SKR 598-36-AV-15
WILD CAT
Garfield County , Colorado**

Cement Surface Casing
10-Sep-2008

Job Site Documents

The Road to Excellence Starts with Safety

| | | | |
|--|---------------------------------|-------------------------|------------------------|
| Sold To #: 338668 | Ship To #: 2666605 | Quote #: | Sales Order #: 6157882 |
| Customer: CHEVRON - MID-CONTINENT EBIZ | Customer Rep: Morgan, Randy | | |
| Well Name: SKR | Well #: 598-36-AV-15 | API/UWI #: | |
| Field: WILD CAT | City (SAP): PARACHUTE | County/Parish: Garfield | State: Colorado |
| Contractor: H&P 318 | Rig/Platform Name/Num: H&P318 | | |
| Job Purpose: Cement Surface Casing | | | |
| Well Type: Development Well | Job Type: Cement Surface Casing | | |
| Sales Person: HARTLEY, RICHARD | Srvc Supervisor: HAYES, DIRK | MBU ID Emp #: 336768 | |

Job Personnel

| HES Emp Name | Exp Hrs | Emp # | HES Emp Name | Exp Hrs | Emp # | HES Emp Name | Exp Hrs | Emp # |
|--------------------------|---------|--------|---------------|---------|--------|---------------|---------|--------|
| EDWARDS, RICHARD Delbert | 3.0 | 380448 | HAYES, DIRK A | 3.0 | 336768 | LITTLE, FRANK | 3.0 | 448361 |
| MUHLESTEIN, RYAN | 3.0 | 453609 | | | | | | |

Equipment

| HES Unit # | Distance-1 way | HES Unit # | Distance-1 way | HES Unit # | Distance-1 way | HES Unit # | Distance-1 way |
|------------|----------------|------------|----------------|------------|----------------|------------|----------------|
| 10719775 | 120 mile | 10783493 | 120 mile | 10822007 | 120 mile | 10872429 | 120 mile |
| 10897909 | 120 mile | | | | | | |

Job Hours

| Date | On Location Hours | Operating Hours | Date | On Location Hours | Operating Hours | Date | On Location Hours | Operating Hours |
|----------|-------------------|-----------------|--|-------------------|-----------------|------|-------------------|-----------------|
| 09-10-08 | 3 | 1 | | | | | | |
| TOTAL | | | Total is the sum of each column separately | | | | | |

Job

| Formation Name | Formation Depth (MD) | Top | Bottom | Form Type | Job depth MD | Water Depth | Perforation Depth (MD) | From | To |
|----------------|----------------------|-----|--------|-----------|-------------------|-------------|------------------------|------|----|
| | | | | BHST | 1375. ft | | | | |
| | | | | | Job Depth TVD | 5. ft | | | |
| | | | | | Wk Ht Above Floor | | | | |
| | | | | | | | | | |

Job Times

| Date | Time | Time Zone |
|-----------------|-------|-----------|
| 10 - Sep - 2008 | 08:00 | MST |
| 10 - Sep - 2008 | 10:00 | MST |
| 10 - Sep - 2008 | 13:14 | MST |
| 10 - Sep - 2008 | 14:05 | MST |
| 10 - Sep - 2008 | 16:00 | MST |

Well Data

| Description | New / Used | Max pressure psig | Size in | ID in | Weight lbm/ft | Thread | Grade | Top MD ft | Bottom MD ft | Top TVD ft | Bottom TVD ft |
|----------------------|------------|-------------------|---------|-------|---------------|--------|-------|-----------|--------------|------------|---------------|
| 12 1/4 Open Hole | | | | 12.25 | | | | | 1375. | | |
| 8.625 Surface Casing | Unknown | | 8.625 | 8.097 | 24. | | | | 1363. | | |

Sales/Rental/3rd Party (HES)

| Description | Qty | Qty uom | Depth | Supplier |
|--|-----|---------|-------|----------|
| PLUG,CMTG,TOP,8 5/8,HWE,7.20 MIN/8.09 MA | 1 | EA | | |
| PORT. DAS W/CEMWIN;ACQUIRE W/HES, ZI | 1 | JOB | | |
| ADC (AUTO DENSITY CTRL) SYS, /JOB,ZI | 1 | JOB | | |

Tools and Accessories

| Type | Size | Qty | Make | Depth | Type | Size | Qty | Make | Depth | Type | Size | Qty | Make |
|--------------|------|-----|------|-------|-------------|------|-----|------|-------|----------------|------|-----|------|
| Guide Shoe | | | | | Packer | | | | | Top Plug | | 1 | |
| Float Shoe | | | | | Bridge Plug | | | | | Bottom Plug | | | |
| Float Collar | | | | | Retainer | | | | | SSR plug set | | | |
| Insert Float | | | | | | | | | | Plug Container | | 1 | |
| Stage Tool | | | | | | | | | | Centralizers | | | |

Miscellaneous Materials

| Gelling Agt | Conc | Surfactant | Conc | Acid Type | Qty | Conc | % |
|---------------|------|------------|------|-----------|------|------|---|
| Treatment Fld | Conc | Inhibitor | Conc | Sand Type | Size | Qty | |

| Fluid Data | | | | | | | | | |
|--|------------------------------|-------------------------------|-----------------|-----------------------------------|------------------------|---------------------------|------------------|-----------------|------------------------|
| Stage/Plug #: 1 | | | | | | | | | |
| Fluid # | Stage Type | Fluid Name | Qty | Qty uom | Mixing Density lbm/gal | Yield ft ³ /sk | Mix Fluid Gal/sk | Rate bbl/min | Total Mix Fluid Gal/sk |
| 1 | Fresh H2O, Poly Flake Spacer | | 30.0 | bbl | . | .0 | .0 | .0 | |
| 2 | Lead Cement | VERSACEM (TM) SYSTEM (452010) | 251.0 | sacks | 12.3 | 2.37 | 13.76 | | 13.45 |
| | 0.125 lbm | POLY-E-FLAKE (101216940) | | | | | | | |
| | 0.25 % | D-AIR 3000 (101007446) | | | | | | | |
| | 13.448 Gal | FRESH WATER | | | | | | | |
| 3 | Tail Cement | VERSACEM (TM) SYSTEM (452010) | 164.0 | sacks | 12.8 | 2.11 | 11.79 | | 11.48 |
| | 0.125 lbm | POLY-E-FLAKE (101216940) | | | | | | | |
| | 0.25 % | D-AIR 3000 (101007446) | | | | | | | |
| | 11.483 Gal | FRESH WATER | | | | | | | |
| 4 | Displacement | Fresh H2O | 84.1 | bbl | 8.33 | .0 | .0 | .0 | |
| Calculated Values | | Pressures | | Volumes | | | | | |
| Displacement | 84.1 | Shut In: Instant | | Lost Returns | no | Cement Slurry | 190 | Pad | |
| Top Of Cement | surface | 5 Min | | Cement Returns | 50 | Actual Displacement | 84 | Treatment | |
| Frac Gradient | | 15 Min | | Spacers | 30 | Load and Breakdown | | Total Job | |
| Rates | | | | | | | | | |
| Circulating | | Mixing | 8 | Displacement | 10 | Avg. Job | 9 | | |
| Cement Left In Pipe | Amount | 0 ft | Reason | Shoe Joint | | | | | |
| Frac Ring # 1 @ | ID | | Frac ring # 2 @ | ID | | Frac Ring # 3 @ | ID | Frac Ring # 4 @ | ID |
| The Information Stated Herein Is Correct | | | | Customer Representative Signature | | | | | |

The Road to Excellence Starts with Safety

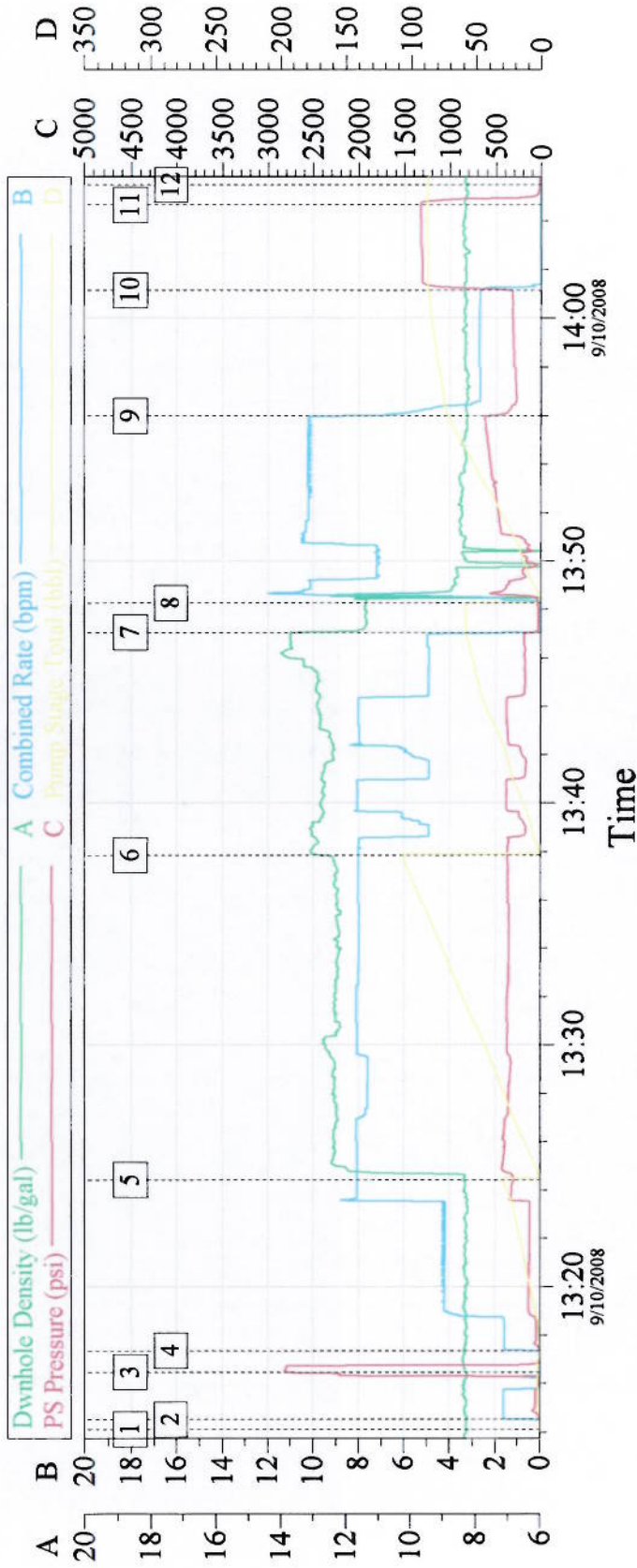
| | | | |
|--|---------------------------------|---|------------------------|
| Sold To #: 338668 | Ship To #: 2666605 | Quote #: | Sales Order #: 6157882 |
| Customer: CHEVRON - MID-CONTINENT EBIZ | Customer Rep: Morgan, Randy | | |
| Well Name: SKR | Well #: 598-36-AV-15 | API/UWI #: | |
| Field: WILD CAT | City (SAP): PARACHUTE | County/Parish: Garfield | State: Colorado |
| Legal Description: | | | |
| Lat: N 0 deg. OR N 0 deg. 0 min. 0 secs. | | Long: E 0 deg. OR E 0 deg. 0 min. 0 secs. | |
| Contractor: H&P 318 | Rig/Platform Name/Num: H&P318 | | |
| Job Purpose: Cement Surface Casing | Ticket Amount: | | |
| Well Type: Development Well | Job Type: Cement Surface Casing | | |
| Sales Person: HARTLEY, RICHARD | Srvc Supervisor: HAYES, DIRK | MBU ID Emp #: 336768 | |

| Activity Description | Date/Time | Cht # | Rate bbl/min | Volume bbl | | Pressure psig | | Comments |
|--|------------------|-------|--------------|------------|-------|---------------|--------|---|
| | | | | Stage | Total | Tubing | Casing | |
| Call Out | 09/10/2008 08:00 | | | | | | | |
| Crew Leave Yard | 09/10/2008 09:00 | | | | | | | |
| Arrive at Location from Service Center | 09/10/2008 10:00 | | | | | | | |
| Assessment Of Location Safety Meeting | 09/10/2008 10:45 | | | | | | | |
| Other | 09/10/2008 10:50 | | | | | | | ARRIVE ON LOCATION SEPT 10, 2008 @ 10:00 STILL 15 JOINTS OF CASING TO RUN |
| Safety Meeting - Pre Rig-Up | 09/10/2008 11:30 | | | | | | | |
| Safety Meeting - Pre Job | 09/10/2008 11:45 | | | | | | | |
| Start Job | 09/10/2008 13:14 | | | | | | | TD 1375, TP 1363, SHOE 41.01, MUD 9.3 |
| Prime Pumps | 09/10/2008 13:15 | | 2 | | 2 | | 76.0 | PUMP 2 BBLS AHEAD TO PRIME LINES |
| Test Lines | 09/10/2008 13:16 | | 0.5 | | 0.5 | | 3000.0 | |
| Pump Spacer | 09/10/2008 13:17 | | 8 | | 30 | | 325.0 | PUMP FRESH H2O FOR THE FIRST 10 BBLS THEN LAST 20 BBLS ADD POLYFLAKE |
| Pump Lead Cement | 09/10/2008 13:24 | | 8 | | 105.9 | | 370.0 | 251 SKS @ 12.3 YIELD 2.37 W/R 13.76 |
| Pump Tail Cement | 09/10/2008 13:37 | | 8 | | 61.6 | | 295.0 | 164 SKS @ 12.8 YIELD 2.11 W/R 11.79 |
| Shutdown | 09/10/2008 13:47 | | | | | | | |
| Drop Top Plug | 09/10/2008 13:48 | | | | | | | |
| Pump Displacement | 09/10/2008 13:49 | | 10 | | 84.1 | | 625.0 | PUMP FRESH H2O FOR DISPLACEMENT |

Cementing Job Log

| Activity Description | Date/Time | Cht # | Rate bbl/min | Volume bbl | | Pressure psig | | Comments |
|----------------------|------------------|-------|--------------|------------|-------|---------------|--------|---|
| | | | | Stage | Total | Tubing | Casing | |
| Slow Rate | 09/10/2008 13:55 | | 2.7 | | 70 | | 275.0 | SLOW RATE FROM 10 BBLs PER MIN TO 2 BBLs PER MIN LAST 10 BBLs PER COMPANY MAN |
| Bump Plug | 09/10/2008 14:01 | | 2.7 | | 84.1 | | 1305.0 | HOLD PRESSURE FOR 5 MIN PER COMPANY MAN |
| Check Floats | 09/10/2008 14:04 | | | | | | | FLOATS HELD |
| End Job | 09/10/2008 14:05 | | | | | | | |
| Other | 09/10/2008 14:06 | | | | | | | GOOD RETURNS DURING JOB, DID NOT MOVE PIPE DURING JOB |
| Other | 09/10/2008 14:07 | | | | | | | 50 BBLs OF CEMENT TO PIT, PLACE TOP DRIVE ON TOP OF CEMENT HEAD DURING JOB |
| Other | 09/10/2008 14:08 | | | | | | | THANK YOU FROM HALLIBURTON DIRK HAYES AND CREW |

8 5/8 " SURFACE



Event Log

| | | | |
|-----------------------------|----------|-------------------------------------|----------|
| 1 start job | 13:14:08 | 2 pump 2 bbls ahead to prime lines | 13:14:32 |
| 3 test lines | 13:16:29 | 4 pump fresh h2o spacer / polyflake | 13:17:22 |
| 5 pump lead cement | 13:24:25 | 6 pump tail cement | 13:37:51 |
| 7 shut down / drop top plug | 13:47:03 | 8 pump displacement | 13:48:16 |
| 9 slow rate | 13:55:59 | 10 bump top plug | 14:01:08 |
| 11 check floats | 14:04:39 | 12 end job | 14:05:28 |

| | | |
|----------------------|-----------------------|-----------------------|
| Customer: Chevron | Job Date: 09-10-08 | Ticket #: 6157882 |
| Truck # Elite # 11 | Operator Rick Edwards | ADC USED YES |
| Cementier Dirk Hayes | Co Rep Dan Meier | Lease skr598-36-av-15 |