
CHEVRON - MID-CONTINENT EBIZ

**SKR 598-36-AV-15
SKINNER RIDGE
Garfield County , Colorado**

Cement Production Casing

08-Oct-2008

Job Site Documents

The Road to Excellence Starts with Safety

Sold To #: 338668	Ship To #: 2666605	Quote #:	Sales Order #: 6226717
Customer: CHEVRON - MID-CONTINENT EBIZ		Customer Rep: JAPP, KEN	
Well Name: SKR		Well #: 598-36-AV-15	API/UWI #: 05-045-16273
Field: SKINNER RIDGE	City (SAP): PARACHUTE	County/Parish: Garfield	State: Colorado
Lat: N 39.573 deg. OR N 39 deg. 34 min. 21.504 secs.		Long: W 108.34 deg. OR W -109 deg. 39 min. 35.867 secs.	
Contractor: H&P 318		Rig/Platform Name/Num: H&P 318	
Job Purpose: Cement Production Casing			
Well Type: Development Well		Job Type: Cement Production Casing	
Sales Person: HARTLEY, RICHARD		Srvc Supervisor: MAGERS, MICHAEL	MBU ID Emp #: 339439

Job Personnel

HES Emp Name	Exp Hrs	Emp #	HES Emp Name	Exp Hrs	Emp #	HES Emp Name	Exp Hrs	Emp #
BETZ, KLAYTON Alan	6	446140	CUSTER, JASON Richard	6	414714	KUKUS, CRAIG A	6	369124
MAGERS, MICHAEL Gerard	6	339439	MALONE, WAYNE	6	393379			

Equipment

HES Unit #	Distance-1 way	HES Unit #	Distance-1 way	HES Unit #	Distance-1 way	HES Unit #	Distance-1 way
10025118	120 mile	10026594C	120 mile	10547379	120 mile	10744648C	120 mile
10867094	120 mile	10897925	120 mile	10998508	120 mile	6334	120 mile

Job Hours

Date	On Location Hours	Operating Hours	Date	On Location Hours	Operating Hours	Date	On Location Hours	Operating Hours
10/08/2008	6	1.5						
TOTAL			Total is the sum of each column separately					

Job

Formation Name	Formation Depth (MD)	Top	Bottom	Form Type	Job depth MD	Job Depth TVD	Water Depth	Perforation Depth (MD)	From	To
				BHST	6664. ft	6664. ft	Wk Ht Above Floor	5. ft		

Job Times

Date	Time	Time Zone
08 - Oct - 2008	10:00	MST
08 - Oct - 2008	15:00	MST
08 - Oct - 2008	18:57	MST
08 - Oct - 2008	20:24	MST
08 - Oct - 2008	22:30	MST

Well Data

Description	New / Used	Max pressure psig	Size in	ID in	Weight lbm/ft	Thread	Grade	Top MD ft	Bottom MD ft	Top TVD ft	Bottom TVD ft
-------------	------------	-------------------	---------	-------	---------------	--------	-------	-----------	--------------	------------	---------------

Sales/Rental/3rd Party (HES)

Description	Qty	Qty uom	Depth	Supplier
PLUG,CMTG, TOP, 4 1/2, HWE, 3.65 MIN/4.14 MA	1	EA		

Tools and Accessories

Type	Size	Qty	Make	Depth	Type	Size	Qty	Make	Depth	Type	Size	Qty	Make
Guide Shoe					Packer					Top Plug	4.5	1	
Float Shoe					Bridge Plug					Bottom Plug			
Float Collar					Retainer					SSR plug set			
Insert Float										Plug Container	4.5	1	
Stage Tool										Centralizers			

Miscellaneous Materials

Gelling Agt	Conc	Surfactant	Conc	Acid Type	Qty	Conc	%
Treatment Fld	Conc	Inhibitor	Conc	Sand Type	Size		Qty

Fluid Data									
Stage/Plug #: 1									
Fluid #	Stage Type	Fluid Name	Qty	Qty uom	Mixing Density lbm/gal	Yield ft ³ /sk	Mix Fluid Gal/sk	Rate bbl/min	Total Mix Fluid Gal/sk
1	Dyed PolyFlake Spacer		50.00	bbl	8.33	.0	.0	.0	
2	Lead Cement	VARICEM (TM) CEMENT (452009)	413.0	sacks	12.8	1.55	7.15		
3	Tail Cement	VARICEM (TM) CEMENT (452009)	601.0	sacks	13.2	1.43	6.19		
4	KCL Displacement		102.00	bbl	.	.0	.0	.0	
Calculated Values		Pressures		Volumes					
Displacement	102.6	Shut In: Instant		Lost Returns	0	Cement Slurry	268	Pad	
Top Of Cement	102	5 Min		Cement Returns	0	Actual Displacement	102	Treatment	
Frac Gradient		15 Min		Spacers	50	Load and Breakdown		Total Job	486
Rates									
Circulating	RIG	Mixing	6	Displacement	10	Avg. Job	8		
Cement Left In Pipe	Amount	47FT	Reason	Shoe Joint					
Frac Ring # 1 @	ID	Frac ring # 2 @	ID	Frac Ring # 3 @	ID	Frac Ring # 4 @	ID		
The Information Stated Herein Is Correct				Customer Representative Signature					

The Road to Excellence Starts with Safety

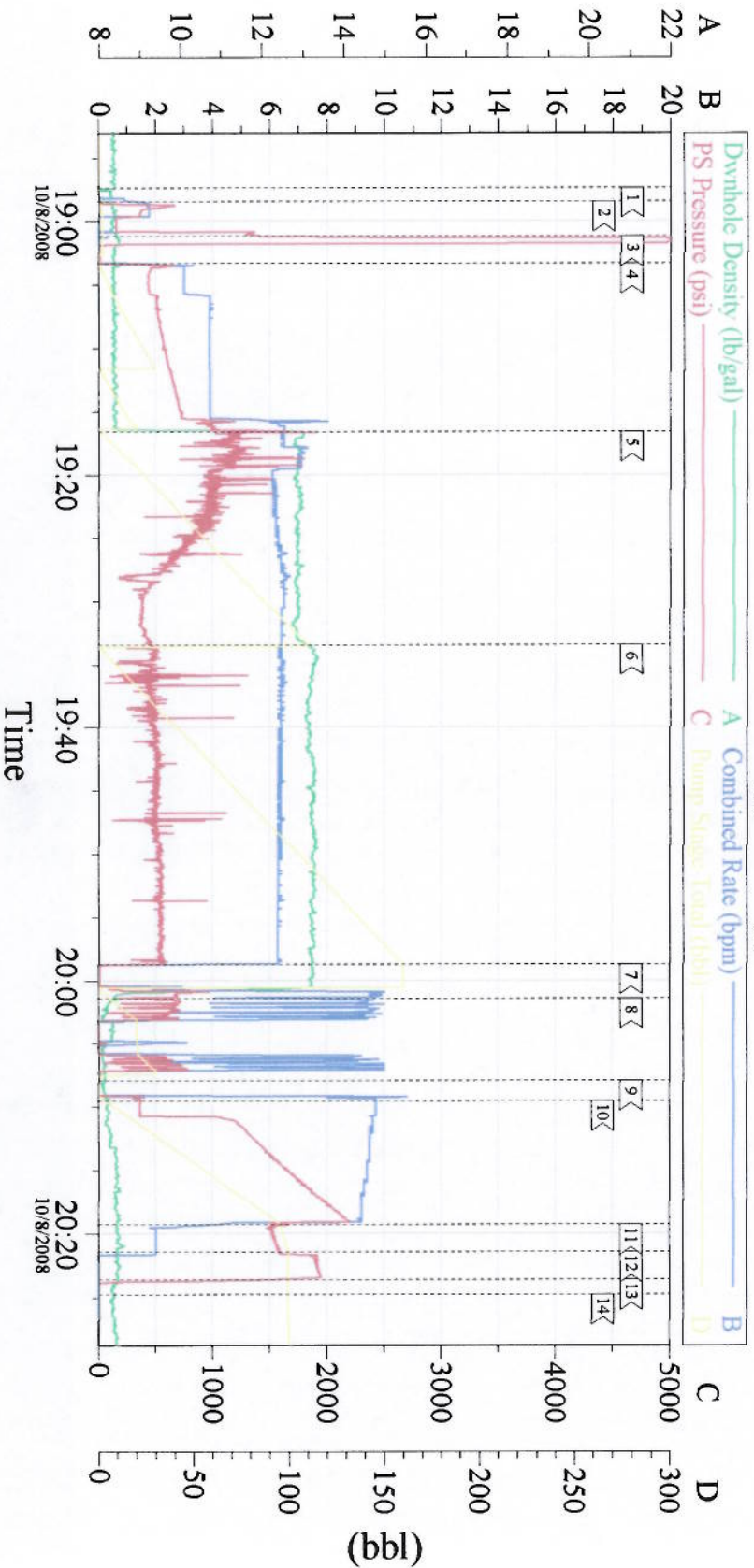
Sold To #: 338668	Ship To #: 2666605	Quote #:	Sales Order #: 6226717
Customer: CHEVRON - MID-CONTINENT EBIZ	Customer Rep: JAPP, KEN		
Well Name: SKR	Well #: 598-36-AV-15	API/UWI #: 05-045-16273	
Field: SKINNER RIDGE	City (SAP): PARACHUTE	County/Parish: Garfield	State: Colorado
Legal Description:			
Lat: N 39.573 deg. OR N 39 deg. 34 min. 21.504 secs.		Long: W 108.34 deg. OR W -109 deg. 39 min. 35.867 secs.	
Contractor: H&P 318	Rig/Platform Name/Num: H&P 318		
Job Purpose: Cement Production Casing	Ticket Amount:		
Well Type: Development Well	Job Type: Cement Production Casing		
Sales Person: HARTLEY, RICHARD	Srvc Supervisor: MAGERS, MICHAEL	MBU ID Emp #:	339439

Activity Description	Date/Time	Cht #	Rate bbl/min	Volume bbl		Pressure psig		Comments
				Stage	Total	Tubing	Casing	
Crew Leave Yard	10/08/2008 12:00							
Arrive At Loc	10/08/2008 15:00							
Assessment Of Location Safety Meeting	10/08/2008 15:15							
Pre-Rig Up Safety Meeting	10/08/2008 16:00							Water Test- IRON-0 CHLORIDE-0 HARDNESS-250 SULFATE-UNDER 200 POT-0 PH-6 TEMP-63 PARTICLE-650
Rig-Up Equipment	10/08/2008 16:10							TD-6684 TP-6664 SJ- 47 MW-10 CSG- 4.5 11.6# N-80 OH-7 7/8 SURFACE @ 1358 PLUG CONTAINER-B- 0759
Safety Huddle	10/08/2008 18:30							RIG STILL RUNNING CASING WHEN HES ARRIVED. HES RIGGED UP WHILE RUNNING CASING. RIG WAS GOING TO CIRCULATE FOR AN HOUR BEFORE RUNNING THE JOB.
Start Job	10/08/2008 18:57							
Other	10/08/2008 18:58		2	2			670.0	FILL LINES
Pressure Test	10/08/2008 19:01		0.5	0.5			5000. 0	PSI TEST OK
Pump Spacer 1	10/08/2008 19:03		4	50			560.0	DYED POLYFLAKE SPACER 30 FRESH WATER 20 DYE

Cementing Job Log

Activity Description	Date/Time	Cht #	Rate bbl/min	Volume bbl		Pressure psig		Comments
				Stage	Total	Tubing	Casing	
Pump Lead Cement	10/08/2008 19:16		6	114			1000.0	413 SKS 12.8 PPG 1.55 FT3/SK 7.15 GAL/SK
Pump Tail Cement	10/08/2008 19:33		6	153			550.0	601 SKS 13.2 PPG 1.43 FT3/SK 6.19 GAL/SK
Shutdown	10/08/2008 19:58							
Clean Lines	10/08/2008 20:01		6	30				CLEAN LINES AND PUMPS
Drop Plug	10/08/2008 20:07							DROPPED PLUG/PLUG WENT AWAY NO PROBLEMS
Pump Displacement	10/08/2008 20:09		10	102.6			2116.0	2% KCL WATER
Slow Rate	10/08/2008 20:19		2	92			1600.0	
Bump Plug	10/08/2008 20:21		2	102			1650.0	BUMPED PLUG
Check Floats	10/08/2008 20:23			102			2000.0	FLOATS HELD/GOT 1 BBL BACK INTO DISPLACEMENT TANK
End Job	10/08/2008 20:24							HAD GOOD CIRCULATION THROUGHOUT JOB. THANKS FOR USING HES AND THE CREW OF MIKE MAGERS

4 1/2" Longstring



Event Log

1 < START JOB	18:57:19	2 < FILL LINES	18:58:25	3 < PRESSURE TEST	19:01:10
4 < PUMP DYE POLYLAKE SPACER	19:03:18	5 < PUMP LEAD CEMENT	19:16:33	6 < PUMP TAIL CEMENT	19:33:25
7 < SHUT DOWN	19:58:38	8 < CLEAN LINES & PUMPS	20:01:22	9 < DROP PLUG	20:07:53
10 < PUMP KCL/WTR DISPLACEMENT	20:09:30	11 < SLOW RATE	20:19:16	12 < BUMP PLUG	20:21:25
13 < CHECK FLOATS	20:23:35	14 < END JOB	20:24:43		

Customer: CHEVRON-H&P 318
Well Number: SKR 598-36-AV-15
Supervisor: MIKE MAGERS

Job Date: 10/08/2008
Job Type: PRODUCTION
Company Rep: KEN JAPP

Ticket #: 6226717
ADC Used: Yes
Operator: CRAIG KUKUS-ELITE 6

CemWin v1.7.2
08-Oct-08 21:25