
CHEVRON - MID-CONTINENT EBIZ

**SKR 598-36-AV-14
SKINNER RIDGE
Garfield County , Colorado**

Cement Surface Casing
22-Sep-2008

Job Site Documents

The Road to Excellence Starts with Safety

Sold To #: 338668	Ship To #: 2666604	Quote #:	Sales Order #: 6187075
Customer: CHEVRON - MID-CONTINENT EBIZ	Customer Rep: Meier, Dan		
Well Name: SKR	Well #: 598-36-AV-14	API/UWI #: 05-045-16296	
Field: SKINNER RIDGE	City (SAP): PARACHUTE	County/Parish: Garfield	State: Colorado
Lat: N 39.573 deg. OR N 39 deg. 34 min. 21.569 secs.	Long: W 108.34 deg. OR W -109 deg. 39 min. 35.726 secs.		
Contractor: H&P 318	Rig/Platform Name/Num: H&P 318		
Job Purpose: Cement Surface Casing			
Well Type: Development Well	Job Type: Cement Surface Casing		
Sales Person: DUNNING, DUSTIN	Srvc Supervisor: GALLEGOS, JASON	MBU ID Emp #: 386647	

Job Personnel

HES Emp Name	Exp Hrs	Emp #	HES Emp Name	Exp Hrs	Emp #	HES Emp Name	Exp Hrs	Emp #
CARTER, ERIC Earl	4.0	345598	EDWARDS, RICHARD Delbert	2.0	380448	GALLEGOS, JASON Michael	4.0	386647
HAYES, DIRK A	2.0	336768	HAYES, JESSE Doug	4.0	403601	REEVES, BRANDON W	6.0	287883
SHAHNOOSHI, ALIREZA Faroooshani	2.0	391960						

Equipment

HES Unit #	Distance-1 way	HES Unit #	Distance-1 way	HES Unit #	Distance-1 way	HES Unit #	Distance-1 way
10719775	120 mile						

Job Hours

Date	On Location Hours	Operating Hours	Date	On Location Hours	Operating Hours	Date	On Location Hours	Operating Hours
09-22-08	6	1						

TOTAL Total is the sum of each column separately

Job

Formation Name	Job Times
Formation Depth (MD) Top Bottom	Date Time Time Zone
Form Type BHST	Called Out 21 - Sep - 2008 11:00 MST
Job depth MD 1477. ft Job Depth TVD 1477. ft	On Location 22 - Sep - 2008 02:30 MST
Water Depth Wk Ht Above Floor 5.0	Job Started 22 - Sep - 2008 08:24 MST
Perforation Depth (MD) From To	Job Completed 22 - Sep - 2008 09:11 MST
	Departed Loc 22 - Sep - 2008 11:30 MST

Well Data

Description	New / Used	Max pressure psig	Size in	ID in	Weight lbm/ft	Thread	Grade	Top MD ft	Bottom MD ft	Top TVD ft	Bottom TVD ft
12 1/4 Open Hole Section				12.25					1477.		
8.625 Surface Casing	Unknown		8.625	8.097	24.				1466.		

Sales/Rental/3rd Party (HES)

Description	Qty	Qty uom	Depth	Supplier
PLUG,CMTG,TOP,8 5/8,HWE,7.20 MIN/8.09 MA	1	EA		
PORT. DAS W/CEMWIN;ACQUIRE W/HES, ZI	1	JOB		
ADC (AUTO DENSITY CTRL) SYS, /JOB,ZI	1	JOB		

Tools and Accessories

Type	Size	Qty	Make	Depth	Type	Size	Qty	Make	Depth	Type	Size	Qty	Make
Guide Shoe					Packer					Top Plug		1	
Float Shoe					Bridge Plug					Bottom Plug			
Float Collar					Retainer					SSR plug set			
Insert Float										Plug Container		1	
Stage Tool										Centralizers			

Miscellaneous Materials												
Gelling Agt		Conc		Surfactant		Conc		Acid Type		Qty		Conc %
Treatment Fld		Conc		Inhibitor		Conc		Sand Type		Size		Qty
Fluid Data												
Stage/Plug #: 1												
Fluid #	Stage Type	Fluid Name	Qty	Qty uom	Mixing Density lbm/gal	Yield ft ³ /sk	Mix Fluid Gal/sk	Rate bbl/min	Total Mix Fluid Gal/sk			
1	PolyFlake Dyed Spacer		30.0	bbl	.	.0	.0	.0				
2	VersaCem Lead Cement	VERSACEM (TM) SYSTEM (452010)	280.0	sacks	12.3	2.11	13.76		13.42			
	0.125 lbm	POLY-E-FLAKE (101216940)										
	0.25 %	D-AIR 3000 (101007446)										
	13.418 Gal	FRESH WATER										
3	VersaCem Tail Cement	VERSACEM (TM) SYSTEM (452010)	164.0	sacks	12.8	2.11	11.79		11.46			
	0.125 lbm	POLY-E-FLAKE (101216940)										
	0.25 %	D-AIR 3000 (101007446)										
	11.456 Gal	FRESH WATER										
4	Fresh Water Displacement		90.1	bbl	.	.0	.0	.0				
Calculated Values			Pressures			Volumes						
Displacement	90.1	Shut In: Instant		Lost Returns	NO	Cement Slurry	179	Pad				
Top Of Cement	SURFACE	5 Min		Cement Returns	60	Actual Displacement	91	Treatment				
Frac Gradient		15 Min		Spacers	30	Load and Breakdown		Total Job				
Rates												
Circulating		Mixing	8	Displacement	10	Avg. Job	9					
Cement Left In Pipe	Amount	0 ft	Reason	Shoe Joint								
Frac Ring # 1 @	ID	Frac ring # 2 @	ID	Frac Ring # 3 @	ID	Frac Ring # 4 @	ID					
The Information Stated Herein Is Correct				Customer Representative Signature								

The Road to Excellence Starts with Safety

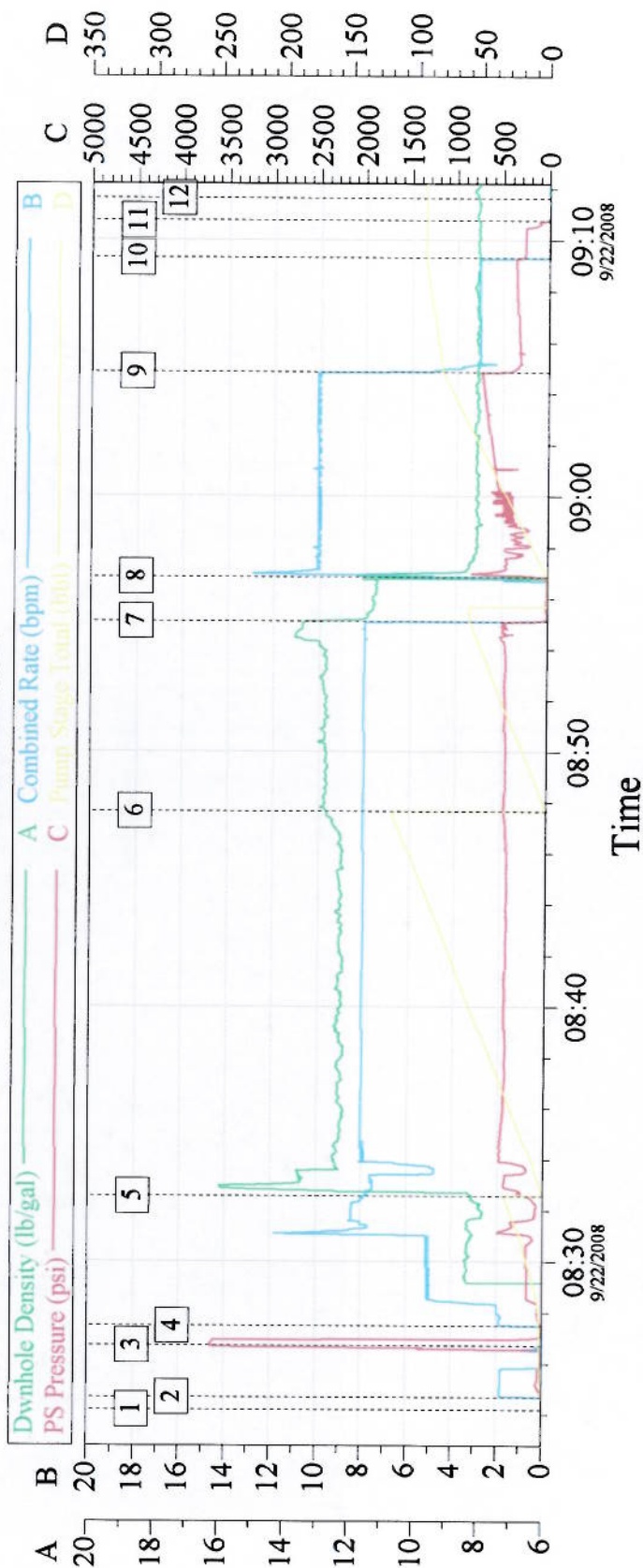
Sold To #: 338668	Ship To #: 2666604	Quote #:	Sales Order #: 6187075
Customer: CHEVRON - MID-CONTINENT EBIZ	Customer Rep: Meier, Dan		
Well Name: SKR	Well #: 598-36-AV-14	API/UWI #: 05-045-16296	
Field: SKINNER RIDGE	City (SAP): PARACHUTE	County/Parish: Garfield	State: Colorado
Legal Description:			
Lat: N 39.573 deg. OR N 39 deg. 34 min. 21.569 secs.		Long: W 108.34 deg. OR W -109 deg. 39 min. 35.726 secs.	
Contractor: H&P 318	Rig/Platform Name/Num: H&P 318		
Job Purpose: Cement Surface Casing	Ticket Amount:		
Well Type: Development Well	Job Type: Cement Surface Casing		
Sales Person: DUNNING, DUSTIN	Srv Supervisor: GALLEGOS, JASON	MBU ID Emp #: 386647	

Activity Description	Date/Time	Cht #	Rate bbl/min	Volume bbl		Pressure psig		Comments
				Stage	Total	Tubing	Casing	
Call Out	09/21/2008 11:00							
Depart Yard Safety Meeting	09/22/2008 00:30							Attended by entire HES crew
Arrive at Location from Service Center	09/22/2008 02:30							Rig running casing
Assessment Of Location Safety Meeting	09/22/2008 03:00							Attended by entire HES crew
Other	09/22/2008 04:00							Spot equipment
Pre-Rig Up Safety Meeting	09/22/2008 07:30							Attended by entire HES crew
Rig-Up Equipment	09/22/2008 07:35							
Pre-Job Safety Meeting	09/22/2008 08:15							Attended by entire HES crew and entire rig crew
Start Job	09/22/2008 08:24							TP 1466, TD 1477, SJ 46, MW 9.1, CASEING 8 5/8 24# K-55, HOLE 12 1/4
Test Lines	09/22/2008 08:26		0.5		0.5		3500.0	
Pump Spacer 1	09/22/2008 08:27		5		20		289.0	POLYFLAKE
Pump Spacer 2	09/22/2008 08:30		8		10		334.0	FRESH WATER
Pump Lead Cement	09/22/2008 08:32		8		118.7		475.0	280 SK, MIXED @ 12.3, 2.38 YIELD, 13.75 GLISK
Pump Tail Cement	09/22/2008 08:47		8		61.6		430.0	164 SK, MIXED @ 12.8, 2.11 YIELD, 11.75 GLISK
Shutdown	09/22/2008 08:55							
Drop Plug	09/22/2008 08:56							

Cementing Job Log

Activity Description	Date/Time	Cht #	Rate bbl/min	Volume bbl		Pressure psig		Comments
				Stage	Total	Tubing	Casing	
Pump Displacement	09/22/2008 08:57		10		90.3		682.0	FRESH WATER
Slow Rate	09/22/2008 09:04		3		80		367.0	
Other	09/22/2008 09:09				91.3		377.0	PLUG DID NOT BUMP WITH 1 BBL OVER PER COMPANY MAN AND WAS TOLD TO SHUT DOWN AND CHECK FLOATS
Check Floats	09/22/2008 09:10							FLOATS HELD
End Job	09/22/2008 09:11							GOOD CIRCULATION THROUGHOUT JOB, 60 BBLs OF CEMENT TO PIT, DID NOT MOVE PIPE DURING JOB
Post-Job Safety Meeting (Pre Rig-Down)	09/22/2008 09:45							Attended by entire HES crew
Rig-Down Equipment	09/22/2008 10:45							
Depart Location Safety Meeting	09/22/2008 11:00							Attended by entire HES crew
Crew Leave Location	09/22/2008 11:15							

8 5/8" SURFACE



Event Log					
1	start job	08:24:12	2	pump 2 bbls ahead to prime lines	08:24:41
3	test lines	08:26:43	4	pump spacer / with polyflake	08:27:29
5	pump lead cement	08:32:34	6	pump tail cement	08:47:39
7	shut down / drop top plug	08:55:06	8	pump displacement	08:56:50
9	slow rate	09:04:52	10	did not bump top plug	09:09:18
11	shut down	09:10:45	12	end job	09:11:38

Customer: Chevron		Job Date: 09-22-08		Ticket #: 6187075	
Truck #	Elite # 9	Operator	Rick Edwards	ADC USED	YES
Cement	Dirk Hayes	Co Rep	Dan Meier	Lease	skr59836av14

CemWin v1.7.2
22-Sep-08 09:40