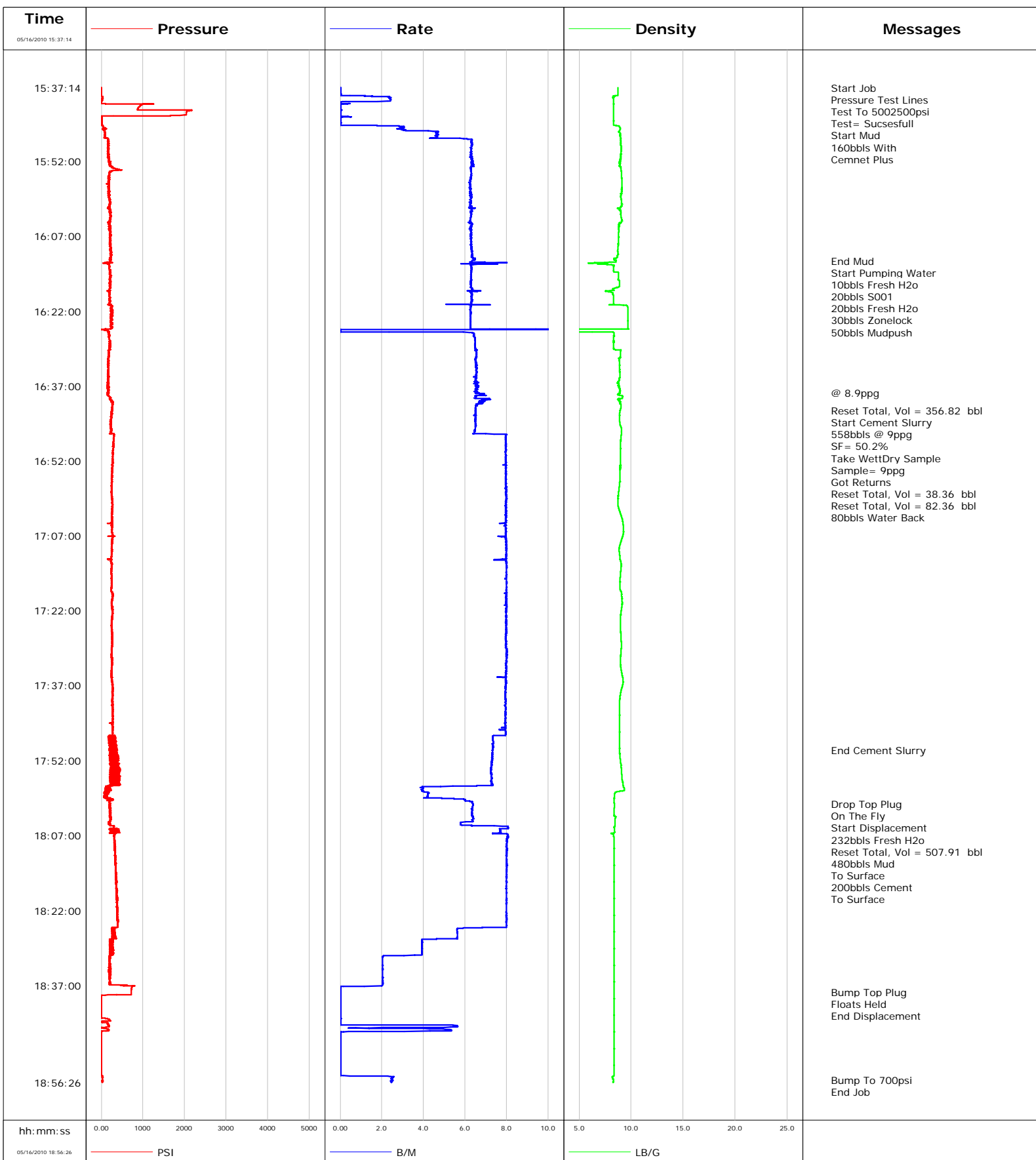


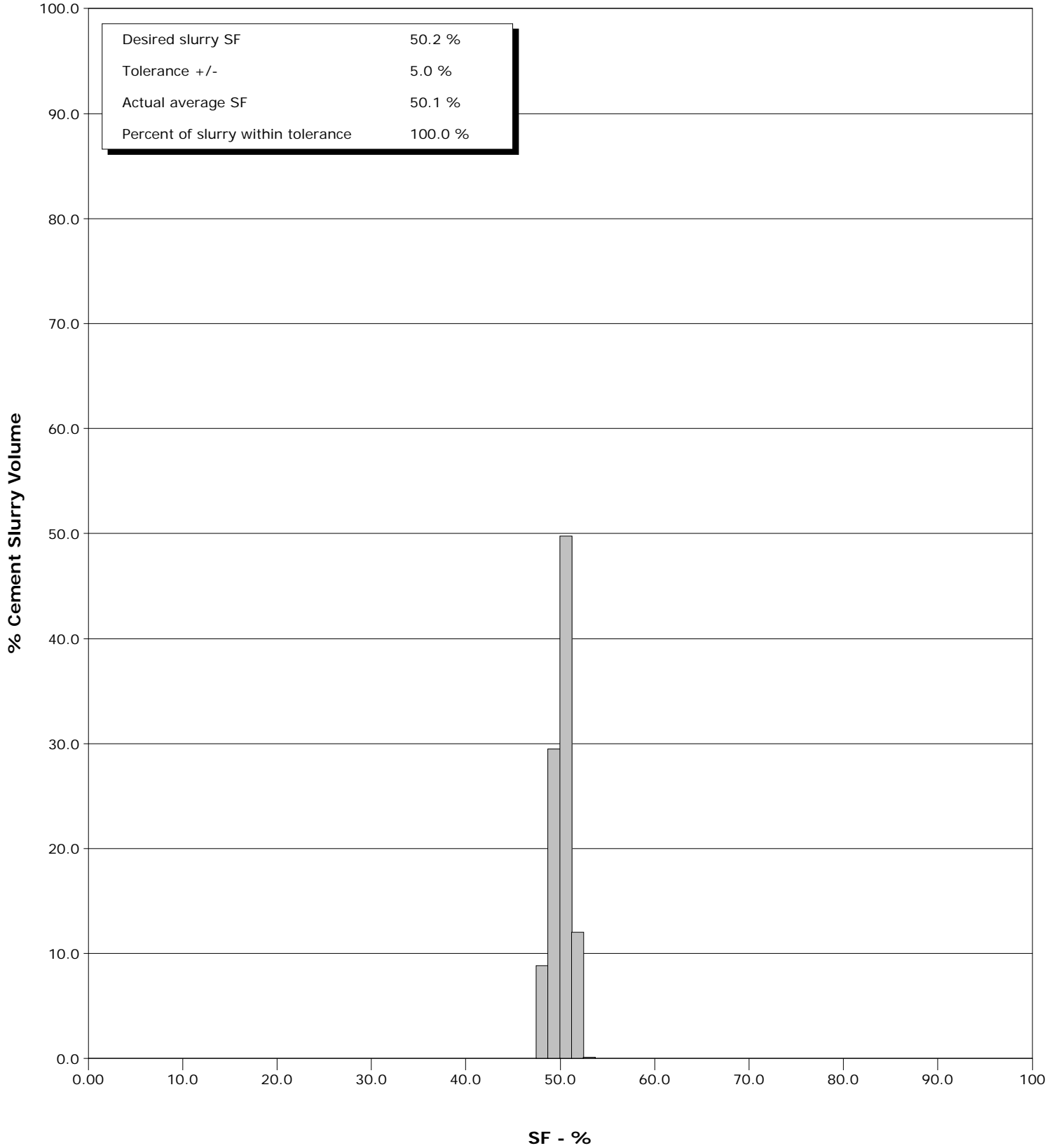
Well	SGU 8507A-25	Client	ENCANA
Field	N PARACHUTE	SIR No.	B2K7-00077
Engineer	JASON CRICK	Job Type	9 5/8 SURFACE
Country	United States	Job Date	05-16-2010



Well SGU 8507A-25
Field N PARACHUTE
Engineer JASON CRICK
Country United States

Client ENCANA
SIR No. B2K7-00077
Job Type 9 5/8 SURFACE
Job Date 05-16-2010

Cement Slurry - 05/16/2010 16:42:04 to 05/16/2010 17:49:51



Customer ENCANA				Job Number B2K7-00077			
Well SGU 8507A-25		Location (legal) N PARACHUTE		Schlumberger Location GJCO		Job Start May/16/2010	
Field N PARACHUTE		Formation Name/Type		Deviation	Bit Size 14.8 in	Well MD	Well TVD
County RIO BLANCO		State/Province Colorado		BHP	BHST	BHCT	Pore Press. Gradient
Well Master 0631183023		API/UWI					
Rig Name PATTERSON 306	Drilled For Gas	Service Via Land	Casing/Liner				
			Depth, ft	Size, in	Weight, lb/ft	Grade	Thread
Offshore Zone	Well Class New	Well Type Development	3046.0	9.630	36.0	J55	8RD
			0.0	0.000	0.0		
Drilling Fluid Type		Max. Density	Plastic Viscosity	Tubing/Drill Pipe			
				Depth,	Size,	Weight,	Grade
Service Line Cementing	Job Type 9 5/8 SURFACE						
Max. Allowed Tub. Press	Max. Allowed Ann. Press	WH Connection Single Cement head	Perforations/Open Hole				
			Top,	Bottom,		No. of Shots	Total Interval
							Diameter
Treat Down Casing		Displacement 232.0 bbl		Packer Type		Packer Depth	
Tubing Vol.		Casing Vol. 235.0 bbl		Annular Vol. 370.0 bbl		Openhole Vol. 605.0 bbl	
Casing/Tubing Secured <input checked="" type="checkbox"/>	1 Hole Vol. Circulated prior to Cement <input type="checkbox"/>	Casing Tools		Squeeze Job			
Lift Pressure 1507 psi	Shoe Type Guide	Squeeze Type					
Pipe Rotated <input type="checkbox"/>	Pipe Reciprocated <input type="checkbox"/>	Shoe Depth 3046.0 ft	Tool Type				
No. Centralizers	Top Plugs 1	Bottom Plugs	Stage Tool Type		Tool Depth		
Cement Head Type Single	Stage Tool Depth		Tail Pipe Size				
Job Scheduled For May/16/2010	Arrived on Location May/16/2010	Leave Location May/16/2010	Collar Type Diff-Fill		Tail Pipe Depth		
			Collar Depth 3002.0 ft		Sqz. Total Vol.		
Date	Time 24-hr clock	Treating Pressure PSI	Flow Rate B/M	Density LB/G	Volume BBL	Message	
05/16/2010	14:15:52					Started Acquisition	
05/16/2010	15:37:13					Pump 9 5/8"	
05/16/2010	15:37:13					Surface Casing	
05/16/2010	15:37:13					@ 3046'	
05/16/2010	15:37:13					SJ= 3002'	
05/16/2010	15:37:14	-8	0.0	8.76	0.0		
05/16/2010	15:37:17					Start Job	
05/16/2010	15:37:17	-7	0.0	8.76	0.0		
05/16/2010	15:37:21					Pressure Test Lines	
05/16/2010	15:37:21	-8	0.0	8.76	0.0		
05/16/2010	15:37:22	-9	0.0	8.76	0.0		
05/16/2010	15:37:23					Test To 5002500psi	
05/16/2010	15:37:23					Test= Sucsesfull	
05/16/2010	15:37:23	-9	0.0	8.76	0.0		
05/16/2010	15:37:52	-8	0.0	8.76	0.0		
05/16/2010	15:38:22	-8	0.0	8.76	0.0		
05/16/2010	15:38:52	-9	0.0	8.76	0.0		
05/16/2010	15:39:22	24	2.4	8.28	0.9		
05/16/2010	15:39:52	16	2.4	8.33	2.1		
05/16/2010	15:40:22	-3	0.0	8.33	2.6		
05/16/2010	15:40:52	936	0.0	8.33	2.6		

Well			Field		Job Start	Customer	Job Number
SGU 8507A-25			N PARACHUTE		May/16/2010	ENCANA	B2K7-00077
Date	Time 24-hr clock	Treating Pressure PSI	Flow Rate B/M	Density LB/G	Volume BBL	Message	
05/16/2010	15:41:52	2120	0.0	8.33	2.6		
05/16/2010	15:42:22	2046	0.0	8.33	2.6		
05/16/2010	15:42:52	1702	0.0	8.33	2.6		
05/16/2010	15:43:22	7	0.0	8.33	2.7		
05/16/2010	15:43:52	6	0.0	8.33	2.7		
05/16/2010	15:44:22	5	0.0	8.33	2.7		
05/16/2010	15:44:52	28	1.8	8.57	2.7		
05/16/2010	15:45:22	56	2.9	8.96	4.2		
05/16/2010	15:45:52	54	3.1	8.90	5.7		
05/16/2010	15:46:15					Start Mud	
05/16/2010	15:46:15					160bbls With	
05/16/2010	15:46:15	97	4.7	8.87	7.3		
05/16/2010	15:46:16					Cemnet Plus	
05/16/2010	15:46:16	91	4.6	8.91	7.4		
05/16/2010	15:46:22	84	4.6	8.93	7.9		
05/16/2010	15:46:52	77	4.6	8.98	10.2		
05/16/2010	15:47:22	110	4.3	8.97	12.5		
05/16/2010	15:47:52	177	6.3	9.01	15.5		
05/16/2010	15:48:22	177	6.3	9.00	18.7		
05/16/2010	15:48:52	181	6.3	9.04	21.8		
05/16/2010	15:49:22	188	6.3	9.04	25.0		
05/16/2010	15:49:52	165	6.3	9.05	28.1		
05/16/2010	15:50:22	169	6.3	9.02	31.3		
05/16/2010	15:50:52	171	6.3	9.02	34.4		
05/16/2010	15:51:22	168	6.3	8.99	37.6		
05/16/2010	15:51:52	181	6.3	8.96	40.7		
05/16/2010	15:52:22	191	6.4	8.83	43.9		
05/16/2010	15:52:52	230	6.3	8.88	47.1		
05/16/2010	15:53:22	284	6.3	8.99	50.2		
05/16/2010	15:53:52	292	6.3	9.04	53.4		
05/16/2010	15:54:22	192	6.3	9.06	56.5		
05/16/2010	15:54:52	189	6.3	9.08	59.7		
05/16/2010	15:55:22	186	6.3	9.10	62.8		
05/16/2010	15:55:52	174	6.3	9.11	65.9		
05/16/2010	15:56:22	170	6.3	9.12	69.1		
05/16/2010	15:56:52	186	6.2	9.12	72.2		
05/16/2010	15:57:22	183	6.2	9.11	75.3		
05/16/2010	15:57:52	187	6.3	9.11	78.4		
05/16/2010	15:58:22	173	6.3	9.05	81.6		
05/16/2010	15:58:52	193	6.2	9.04	84.7		
05/16/2010	15:59:22	195	6.3	9.03	87.8		
05/16/2010	15:59:52	199	6.3	9.06	91.0		
05/16/2010	16:00:22	205	6.3	9.08	94.1		
05/16/2010	16:00:52	185	6.3	9.07	97.2		
05/16/2010	16:01:22	197	6.2	8.92	100.4		
05/16/2010	16:01:52	220	6.3	8.95	103.5		
05/16/2010	16:02:22	220	6.3	9.03	106.7		
05/16/2010	16:02:52	230	6.3	9.01	109.8		
05/16/2010	16:03:22	212	6.3	9.06	113.0		
05/16/2010	16:03:52	209	6.2	9.12	116.1		
05/16/2010	16:04:22	196	6.2	8.87	119.2		
05/16/2010	16:04:52	195	6.3	8.84	122.4		
05/16/2010	16:05:22	211	6.3	8.80	125.5		
05/16/2010	16:05:52	217	6.3	8.82	128.6		

Well			Field		Job Start	Customer	Job Number
SGU 8507A-25			N PARACHUTE		May/16/2010	ENCANA	B2K7-00077
Date	Time 24-hr clock	Treating Pressure PSI	Flow Rate B/M	Density LB/G	Volume BBL	Message	
05/16/2010	16:06:52	209	6.3	8.79	134.9		
05/16/2010	16:07:22	203	6.3	8.79	138.1		
05/16/2010	16:07:52	230	6.3	8.78	141.2		
05/16/2010	16:08:22	216	6.3	8.77	144.4		
05/16/2010	16:08:52	211	6.3	8.76	147.5		
05/16/2010	16:09:22	230	6.3	8.75	150.6		
05/16/2010	16:09:52	239	6.3	8.70	153.8		
05/16/2010	16:10:22	231	6.3	8.73	157.0		
05/16/2010	16:10:52	240	6.4	8.70	160.1		
05/16/2010	16:11:22	223	6.3	8.59	163.3		
05/16/2010	16:11:52	216	6.3	8.54	166.5		
05/16/2010	16:11:56					End Mud	
05/16/2010	16:11:56	227	6.3	8.57	166.9		
05/16/2010	16:12:22	220	7.9	6.51	169.8		
05/16/2010	16:12:26					Start Pumping Water	
05/16/2010	16:12:26	125	7.0	6.25	170.3		
05/16/2010	16:12:28					10bbbls Fresh H2o	
05/16/2010	16:12:28	191	7.0	6.81	170.5		
05/16/2010	16:12:52	196	6.3	8.34	173.1		
05/16/2010	16:13:22	197	6.3	8.33	176.2		
05/16/2010	16:13:52	199	6.3	8.33	179.4		
05/16/2010	16:14:06					20bbbls S001	
05/16/2010	16:14:06	209	6.3	8.33	180.8		
05/16/2010	16:14:22	200	6.3	8.80	182.5		
05/16/2010	16:14:52	225	6.3	8.77	185.7		
05/16/2010	16:15:22	224	6.3	8.77	188.8		
05/16/2010	16:15:52	208	6.3	8.85	192.0		
05/16/2010	16:16:22	215	6.3	8.87	195.1		
05/16/2010	16:16:52	201	6.3	8.87	198.2		
05/16/2010	16:17:22	219	6.3	8.52	201.4		
05/16/2010	16:17:28					20bbbls Fresh H2o	
05/16/2010	16:17:28	197	6.3	8.36	202.0		
05/16/2010	16:17:52	216	6.4	8.33	204.5		
05/16/2010	16:18:22	199	6.3	8.24	207.7		
05/16/2010	16:18:52	193	6.4	8.33	210.9		
05/16/2010	16:19:22	195	6.3	8.33	214.0		
05/16/2010	16:19:52	187	6.3	8.33	217.2		
05/16/2010	16:20:22	191	6.3	8.33	220.4		
05/16/2010	16:20:52	202	6.3	9.47	223.5		
05/16/2010	16:21:14					30bbbls Zonelock	
05/16/2010	16:21:14	227	6.3	9.68	225.8		
05/16/2010	16:21:22	222	6.3	9.69	226.6		
05/16/2010	16:21:52	228	6.3	9.69	229.8		
05/16/2010	16:22:22	267	6.2	9.69	232.9		
05/16/2010	16:22:52	270	6.3	9.69	236.0		
05/16/2010	16:23:22	239	6.3	9.69	239.2		
05/16/2010	16:23:52	225	6.3	9.69	242.3		
05/16/2010	16:24:22	230	6.3	9.70	245.4		
05/16/2010	16:24:52	229	6.3	9.69	248.6		
05/16/2010	16:25:22	268	6.3	9.69	251.7		
05/16/2010	16:25:52	99	0.0	-0.00	254.4		
05/16/2010	16:26:13					50bbbls Mudpush	
05/16/2010	16:26:13	171	5.0	8.03	254.5		
05/16/2010	16:26:22	164	6.3	8.35	255.5		

Well			Field		Job Start	Customer	Job Number
SGU 8507A-25			N PARACHUTE		May/16/2010	ENCANA	B2K7-00077
Date	Time 24-hr clock	Treating Pressure PSI	Flow Rate B/M	Density LB/G	Volume BBL	Message	
05/16/2010	16:27:22	183	6.5	8.32	261.9		
05/16/2010	16:27:52	204	6.5	8.33	265.1		
05/16/2010	16:28:22	213	6.5	8.33	268.4		
05/16/2010	16:28:52	205	6.5	8.33	271.6		
05/16/2010	16:29:22	187	6.5	8.33	274.8		
05/16/2010	16:29:52	166	6.5	9.04	278.1		
05/16/2010	16:30:22	171	6.5	8.97	281.4		
05/16/2010	16:30:52	172	6.5	8.98	284.6		
05/16/2010	16:31:22	176	6.5	8.95	287.9		
05/16/2010	16:31:52	170	6.5	8.85	291.1		
05/16/2010	16:32:22	170	6.5	8.87	294.4		
05/16/2010	16:32:52	163	6.6	8.88	297.7		
05/16/2010	16:33:22	173	6.5	8.90	300.9		
05/16/2010	16:33:52	161	6.5	8.90	304.2		
05/16/2010	16:34:22	174	6.5	8.92	307.5		
05/16/2010	16:34:52	163	6.5	8.92	310.7		
05/16/2010	16:35:22	164	6.5	8.91	314.0		
05/16/2010	16:35:52	175	6.5	8.85	317.3		
05/16/2010	16:36:22	167	6.7	8.67	320.5		
05/16/2010	16:36:52	142	6.6	8.79	323.8		
05/16/2010	16:37:22	160	6.5	8.85	327.1		
05/16/2010	16:37:52	167	6.5	8.93	330.4		
05/16/2010	16:38:22	173	6.6	8.86	333.6		
05/16/2010	16:38:23					@ 8.9ppg	
05/16/2010	16:38:23	173	6.6	8.91	333.7		
05/16/2010	16:38:52	145	6.9	8.89	337.0		
05/16/2010	16:39:22	227	6.5	9.18	340.3		
05/16/2010	16:39:52	250	6.8	8.90	343.7		
05/16/2010	16:40:22	282	6.8	8.94	347.1		
05/16/2010	16:40:52	268	6.5	9.04	350.4		
05/16/2010	16:41:22	253	6.5	9.01	353.7		
05/16/2010	16:41:51					Reset Total, Vol = 356.82 bbl	
05/16/2010	16:41:51	249	6.5	8.96	356.8		
05/16/2010	16:41:52	244	6.5	8.96	356.9		
05/16/2010	16:42:04					Start Cement Slurry	
05/16/2010	16:42:04	259	6.5	8.93	358.2		
05/16/2010	16:42:05					558bbbls @ 9ppg	
05/16/2010	16:42:05					SF= 50.2%	
05/16/2010	16:42:05					Take WettDry Sample	
05/16/2010	16:42:05					Sample= 9ppg	
05/16/2010	16:42:05	245	6.5	8.93	358.3		
05/16/2010	16:42:22	242	6.5	8.91	360.2		
05/16/2010	16:42:52	251	6.5	8.87	363.4		
05/16/2010	16:43:22	230	6.5	8.88	366.7		
05/16/2010	16:43:52	249	6.5	8.90	369.9		
05/16/2010	16:44:22	215	6.5	8.91	373.2		
05/16/2010	16:44:52	236	6.5	8.95	376.4		
05/16/2010	16:45:22	225	6.5	9.05	379.7		
05/16/2010	16:45:52	249	6.5	9.08	382.9		
05/16/2010	16:46:22	222	6.4	9.06	386.1		
05/16/2010	16:46:52	307	8.0	9.05	389.7		
05/16/2010	16:47:19					Got Returns	
05/16/2010	16:47:19	299	8.0	9.02	393.3		
05/16/2010	16:47:22	299	8.0	9.02	393.7		

Well			Field		Job Start	Customer	Job Number
SGU 8507A-25			N PARACHUTE		May/16/2010	ENCANA	B2K7-00077
Date	Time 24-hr clock	Treating Pressure PSI	Flow Rate B/M	Density LB/G	Volume BBL	Message	
05/16/2010	16:47:33	293	8.0	9.02	395.2		
05/16/2010	16:47:52	290	8.0	9.00	397.7		
05/16/2010	16:48:22	289	8.0	8.98	401.7		
05/16/2010	16:48:52	303	7.9	8.97	405.6		
05/16/2010	16:49:22	291	8.0	8.97	409.6		
05/16/2010	16:49:52	277	8.0	8.97	413.6		
05/16/2010	16:50:22	274	8.0	8.97	417.6		
05/16/2010	16:50:52	282	8.0	8.98	421.6		
05/16/2010	16:51:22	275	8.0	8.98	425.5		
05/16/2010	16:51:52	278	8.0	8.97	429.5		
05/16/2010	16:52:22	272	8.0	8.96	433.5		
05/16/2010	16:52:52	272	8.0	8.96	437.5		
05/16/2010	16:53:22	260	8.0	8.95	441.4		
05/16/2010	16:53:52	259	8.0	8.95	445.4		
05/16/2010	16:54:22	261	8.0	8.95	449.4		
05/16/2010	16:54:52	261	8.0	8.95	453.4		
05/16/2010	16:55:22	248	8.0	8.94	457.4		
05/16/2010	16:55:52	255	8.0	8.92	461.3		
05/16/2010	16:56:22	251	8.0	8.90	465.3		
05/16/2010	16:56:52	249	7.9	8.87	469.3		
05/16/2010	16:57:22	250	8.0	8.85	473.3		
05/16/2010	16:57:52	251	8.0	8.82	477.3		
05/16/2010	16:57:54					Reset Total, Vol = 82.36 bbl	
05/16/2010	16:57:54	256	8.0	8.82	477.5		
05/16/2010	16:57:59					80bbbls Water Back	
05/16/2010	16:57:59	255	8.0	8.82	478.2		
05/16/2010	16:58:22	253	8.0	8.80	481.3		
05/16/2010	16:58:52	242	8.0	8.77	485.2		
05/16/2010	16:59:22	249	8.0	8.74	489.2		
05/16/2010	16:59:52	253	8.0	8.73	493.2		
05/16/2010	17:00:22	265	8.0	8.72	497.2		
05/16/2010	17:00:52	272	8.0	8.74	501.2		
05/16/2010	17:01:22	269	8.0	8.78	505.1		
05/16/2010	17:01:52	266	8.0	8.85	509.1		
05/16/2010	17:02:22	254	8.0	8.94	513.1		
05/16/2010	17:02:52	255	8.0	9.02	517.1		
05/16/2010	17:03:22	265	8.0	9.10	521.1		
05/16/2010	17:03:52	259	8.0	9.17	525.1		
05/16/2010	17:04:22	253	8.0	9.21	529.0		
05/16/2010	17:04:52	250	8.0	9.24	533.0		
05/16/2010	17:05:22	261	7.9	9.27	537.0		
05/16/2010	17:05:52	255	8.0	9.28	540.9		
05/16/2010	17:06:22	259	8.0	9.26	544.9		
05/16/2010	17:06:52	268	8.0	9.23	548.9		
05/16/2010	17:07:22	270	7.9	9.15	552.9		
05/16/2010	17:07:52	257	8.0	9.07	556.8		
05/16/2010	17:08:22	257	8.0	8.99	560.8		
05/16/2010	17:08:52	252	8.0	8.92	564.8		
05/16/2010	17:09:22	254	8.0	8.86	568.8		
05/16/2010	17:09:52	245	8.0	8.84	572.8		
05/16/2010	17:10:22	249	8.0	8.87	576.8		
05/16/2010	17:10:52	249	8.0	8.90	580.8		
05/16/2010	17:11:22	243	8.0	8.93	584.7		
05/16/2010	17:11:52	237	7.7	8.96	588.7		

Well			Field		Job Start	Customer	Job Number
SGU 8507A-25			N PARACHUTE		May/16/2010	ENCANA	B2K7-00077
Date	Time 24-hr clock	Treating Pressure PSI	Flow Rate B/M	Density LB/G	Volume BBL	Message	
05/16/2010	17:12:52	258	8.0	9.05	596.6		
05/16/2010	17:13:22	247	8.0	9.04	600.6		
05/16/2010	17:13:52	249	8.0	9.02	604.6		
05/16/2010	17:14:22	243	8.0	8.99	608.6		
05/16/2010	17:14:52	245	8.0	8.97	612.6		
05/16/2010	17:15:22	245	8.0	8.95	616.6		
05/16/2010	17:15:52	247	8.0	8.94	620.6		
05/16/2010	17:16:22	259	8.0	8.95	624.6		
05/16/2010	17:16:52	255	8.0	8.93	628.6		
05/16/2010	17:17:22	243	8.0	8.92	632.6		
05/16/2010	17:17:52	234	8.0	8.96	636.6		
05/16/2010	17:18:22	262	8.0	9.06	640.6		
05/16/2010	17:18:52	269	8.0	9.09	644.5		
05/16/2010	17:19:22	269	8.0	9.10	648.5		
05/16/2010	17:19:52	254	8.0	9.12	652.5		
05/16/2010	17:20:22	245	8.0	9.15	656.5		
05/16/2010	17:20:52	245	8.0	9.13	660.5		
05/16/2010	17:21:22	266	8.0	9.10	664.5		
05/16/2010	17:21:52	267	8.0	9.05	668.5		
05/16/2010	17:22:22	273	8.0	9.02	672.5		
05/16/2010	17:22:52	264	8.0	9.00	676.4		
05/16/2010	17:23:22	251	8.0	8.98	680.4		
05/16/2010	17:23:52	257	8.0	8.98	684.4		
05/16/2010	17:24:22	248	8.0	8.97	688.4		
05/16/2010	17:24:52	246	8.0	8.97	692.4		
05/16/2010	17:25:22	255	8.0	8.98	696.4		
05/16/2010	17:25:52	256	8.0	8.99	700.3		
05/16/2010	17:26:22	261	8.0	8.99	704.3		
05/16/2010	17:26:52	259	8.0	9.01	708.3		
05/16/2010	17:27:22	262	8.0	9.03	712.3		
05/16/2010	17:27:52	267	8.0	9.04	716.3		
05/16/2010	17:28:22	269	8.0	9.05	720.3		
05/16/2010	17:28:52	253	8.0	9.06	724.2		
05/16/2010	17:29:22	250	8.0	9.06	728.2		
05/16/2010	17:29:52	257	8.0	9.03	732.2		
05/16/2010	17:30:22	251	8.0	9.01	736.2		
05/16/2010	17:30:52	245	8.0	9.00	740.2		
05/16/2010	17:31:22	251	8.0	8.99	744.2		
05/16/2010	17:31:52	258	8.0	8.99	748.2		
05/16/2010	17:32:22	267	8.0	8.99	752.2		
05/16/2010	17:32:52	258	8.0	8.99	756.2		
05/16/2010	17:33:22	254	8.0	9.00	760.2		
05/16/2010	17:33:52	241	8.0	9.04	764.1		
05/16/2010	17:34:22	240	7.9	9.09	768.1		
05/16/2010	17:34:52	252	7.9	9.13	772.1		
05/16/2010	17:35:22	245	7.9	9.18	776.1		
05/16/2010	17:35:52	251	8.0	9.22	780.1		
05/16/2010	17:36:22	266	8.0	9.21	784.0		
05/16/2010	17:36:52	276	8.0	9.19	788.0		
05/16/2010	17:37:22	280	8.0	9.11	792.0		
05/16/2010	17:37:52	278	7.9	9.05	796.0		
05/16/2010	17:38:22	273	7.9	8.99	799.9		
05/16/2010	17:38:52	266	7.9	8.96	803.9		
05/16/2010	17:39:22	272	7.9	8.93	807.9		

Well			Field		Job Start	Customer		Job Number
SGU 8507A-25			N PARACHUTE		May/16/2010	ENCANA		B2K7-00077
Date	Time 24-hr clock	Treating Pressure PSI	Flow Rate B/M	Density LB/G	Volume BBL	Message		
05/16/2010	17:40:22	266	7.9	8.88	815.8			
05/16/2010	17:40:52	264	7.9	8.87	819.8			
05/16/2010	17:41:22	274	7.9	8.87	823.8			
05/16/2010	17:41:52	274	8.0	8.88	827.7			
05/16/2010	17:42:22	283	8.0	8.89	831.7			
05/16/2010	17:42:52	272	7.9	8.89	835.7			
05/16/2010	17:43:22	282	7.9	8.89	839.6			
05/16/2010	17:43:52	282	7.9	8.89	843.6			
05/16/2010	17:44:22	271	8.0	8.89	847.6			
05/16/2010	17:44:52	245	7.9	8.89	851.5			
05/16/2010	17:45:22	272	7.9	8.89	855.5			
05/16/2010	17:45:52	271	7.7	8.89	859.5			
05/16/2010	17:46:22	266	8.0	8.90	863.4			
05/16/2010	17:46:52	269	7.9	8.89	867.4			
05/16/2010	17:47:22	176	7.3	8.89	871.1			
05/16/2010	17:47:52	345	7.3	8.89	874.8			
05/16/2010	17:48:22	340	7.4	8.89	878.5			
05/16/2010	17:48:52	210	7.4	8.88	882.2			
05/16/2010	17:49:22	268	7.3	8.88	885.8			
05/16/2010	17:49:51					End Cement Slurry		
05/16/2010	17:49:51	337	7.3	8.89	889.4			
05/16/2010	17:49:52	377	7.3	8.89	889.5			
05/16/2010	17:50:22	310	7.3	8.90	893.2			
05/16/2010	17:50:52	203	7.3	8.91	896.8			
05/16/2010	17:51:22	407	7.3	8.94	900.5			
05/16/2010	17:51:52	381	7.3	8.97	904.1			
05/16/2010	17:52:22	369	7.3	8.99	907.8			
05/16/2010	17:52:52	361	7.3	9.01	911.4			
05/16/2010	17:53:22	223	7.3	9.04	915.0			
05/16/2010	17:53:52	416	7.3	9.06	918.7			
05/16/2010	17:54:22	405	7.2	9.09	922.3			
05/16/2010	17:54:52	262	7.3	9.10	925.9			
05/16/2010	17:55:22	360	7.3	9.12	929.5			
05/16/2010	17:55:52	267	7.3	9.14	933.2			
05/16/2010	17:56:22	232	7.3	9.21	936.8			
05/16/2010	17:56:52	455	7.3	9.21	940.4			
05/16/2010	17:57:22	212	4.0	9.27	943.3			
05/16/2010	17:57:52	125	3.9	9.36	945.3			
05/16/2010	17:58:22	176	4.2	8.49	947.3			
05/16/2010	17:58:52	118	4.2	8.41	949.4			
05/16/2010	17:59:22	87	4.2	8.39	951.5			
05/16/2010	17:59:52	294	6.0	8.35	954.1			
05/16/2010	18:00:22	191	6.3	8.35	957.1			
05/16/2010	18:00:42					Drop Top Plug		
05/16/2010	18:00:42	219	6.4	8.40	959.2			
05/16/2010	18:00:44					On The Fly		
05/16/2010	18:00:44	215	6.4	8.40	959.5			
05/16/2010	18:00:52	194	6.4	8.40	960.3			
05/16/2010	18:00:53					Start Displacement		
05/16/2010	18:00:53	194	6.4	8.40	960.4			
05/16/2010	18:00:54					232bbls Fresh H2o		
05/16/2010	18:00:54	203	6.4	8.40	960.5			
05/16/2010	18:01:22	200	6.4	8.39	963.5			
05/16/2010	18:01:52	202	6.3	8.35	966.7			

Well			Field		Job Start	Customer	Job Number
SGU 8507A-25			N PARACHUTE		May/16/2010	ENCANA	B2K7-00077
Date	Time 24-hr clock	Treating Pressure PSI	Flow Rate B/M	Density LB/G	Volume BBL	Message	
05/16/2010	18:02:52	230	6.3	8.36	973.0		
05/16/2010	18:03:22	205	6.4	8.50	976.2		
05/16/2010	18:03:52	227	6.3	8.46	979.4		
05/16/2010	18:04:22	193	5.8	8.44	982.5		
05/16/2010	18:04:52					Reset Total, Vol = 507.91 bbl	
05/16/2010	18:04:52	195	5.8	8.44	985.4		
05/16/2010	18:04:53					480bbls Mud	
05/16/2010	18:04:53	195	5.8	8.44	985.5		
05/16/2010	18:05:21					To Surface	
05/16/2010	18:05:21	292	8.1	8.39	988.8		
05/16/2010	18:05:22	292	8.1	8.39	989.0		
05/16/2010	18:05:52	206	7.7	8.41	992.9		
05/16/2010	18:06:01					200bbls Cement	
05/16/2010	18:06:01	270	7.7	8.40	994.1		
05/16/2010	18:06:02					To Surface	
05/16/2010	18:06:02	270	7.7	8.40	994.2		
05/16/2010	18:06:22	219	7.7	8.39	996.8		
05/16/2010	18:06:52	317	8.0	8.30	1000.7		
05/16/2010	18:07:22	307	8.0	8.35	1004.7		
05/16/2010	18:07:52	321	8.0	8.35	1008.7		
05/16/2010	18:08:22	312	8.0	8.35	1012.7		
05/16/2010	18:08:52	328	8.0	8.35	1016.7		
05/16/2010	18:09:22	335	8.0	8.35	1020.7		
05/16/2010	18:09:52	330	8.0	8.35	1024.7		
05/16/2010	18:10:22	329	8.0	8.35	1028.7		
05/16/2010	18:10:52	332	8.0	8.35	1032.7		
05/16/2010	18:11:22	350	8.0	8.35	1036.7		
05/16/2010	18:11:52	345	8.0	8.35	1040.7		
05/16/2010	18:12:22	346	8.0	8.35	1044.7		
05/16/2010	18:12:52	343	8.0	8.35	1048.7		
05/16/2010	18:13:22	349	8.0	8.35	1052.7		
05/16/2010	18:13:52	347	8.0	8.35	1056.7		
05/16/2010	18:14:22	354	8.0	8.35	1060.7		
05/16/2010	18:14:52	349	8.0	8.35	1064.7		
05/16/2010	18:15:22	342	8.0	8.35	1068.7		
05/16/2010	18:15:52	339	8.0	8.35	1072.7		
05/16/2010	18:16:22	371	8.0	8.35	1076.7		
05/16/2010	18:16:52	361	8.0	8.35	1080.7		
05/16/2010	18:17:22	362	8.0	8.35	1084.7		
05/16/2010	18:17:52	364	8.0	8.35	1088.6		
05/16/2010	18:18:22	365	8.0	8.35	1092.6		
05/16/2010	18:18:52	368	8.0	8.35	1096.6		
05/16/2010	18:19:22	364	8.0	8.35	1100.6		
05/16/2010	18:19:52	369	8.0	8.35	1104.6		
05/16/2010	18:20:22	375	8.0	8.35	1108.6		
05/16/2010	18:20:52	374	8.0	8.35	1112.6		
05/16/2010	18:21:22	369	8.0	8.35	1116.6		
05/16/2010	18:21:52	379	8.0	8.35	1120.6		
05/16/2010	18:22:22	389	8.0	8.35	1124.6		
05/16/2010	18:22:52	391	8.0	8.35	1128.6		
05/16/2010	18:23:22	379	8.0	8.35	1132.6		
05/16/2010	18:23:52	381	8.0	8.35	1136.6		
05/16/2010	18:24:22	393	8.0	8.35	1140.6		
05/16/2010	18:24:52	389	8.0	8.35	1144.5		

Well			Field		Job Start	Customer	Job Number
SGU 8507A-25			N PARACHUTE		May/16/2010	ENCANA	B2K7-00077
Date	Time 24-hr clock	Treating Pressure PSI	Flow Rate B/M	Density LB/G	Volume BBL	Message	
05/16/2010	18:25:52	254	5.6	8.35	1151.6		
05/16/2010	18:26:22	294	5.6	8.35	1154.4		
05/16/2010	18:26:52	324	5.6	8.35	1157.2		
05/16/2010	18:27:22	259	5.6	8.35	1160.0		
05/16/2010	18:27:52	290	3.9	8.35	1162.6		
05/16/2010	18:28:22	224	4.0	8.34	1164.6		
05/16/2010	18:28:52	218	3.9	8.35	1166.6		
05/16/2010	18:29:22	211	3.9	8.35	1168.5		
05/16/2010	18:29:52	253	3.9	8.35	1170.5		
05/16/2010	18:30:22	297	3.9	8.35	1172.5		
05/16/2010	18:30:52	214	3.9	8.35	1174.4		
05/16/2010	18:31:22	181	2.0	8.35	1175.8		
05/16/2010	18:31:52	208	2.0	8.35	1176.8		
05/16/2010	18:32:22	200	2.0	8.35	1177.8		
05/16/2010	18:32:52	221	2.0	8.35	1178.8		
05/16/2010	18:33:22	218	2.0	8.35	1179.8		
05/16/2010	18:33:52	179	2.0	8.35	1180.8		
05/16/2010	18:34:22	180	2.0	8.35	1181.9		
05/16/2010	18:34:52	218	2.0	8.35	1182.9		
05/16/2010	18:35:22	217	2.0	8.35	1183.9		
05/16/2010	18:35:52	206	2.0	8.35	1184.9		
05/16/2010	18:36:22	209	2.0	8.35	1185.9		
05/16/2010	18:36:52	191	2.0	8.35	1187.0		
05/16/2010	18:37:22	734	0.0	8.35	1187.6		
05/16/2010	18:37:52	727	0.0	8.35	1187.6		
05/16/2010	18:38:17					Bump Top Plug	
05/16/2010	18:38:17	724	0.0	8.35	1187.6		
05/16/2010	18:38:22	724	0.0	8.35	1187.6		
05/16/2010	18:38:52	715	0.0	8.35	1187.6		
05/16/2010	18:39:08					Floats Held	
05/16/2010	18:39:08	-6	0.0	8.35	1187.6		
05/16/2010	18:39:11					End Displacement	
05/16/2010	18:39:11	-6	0.0	8.35	1187.6		
05/16/2010	18:39:22	-6	0.0	8.35	1187.6		
05/16/2010	18:39:52	-6	0.0	8.35	1187.6		
05/16/2010	18:40:22	-6	0.0	8.35	1187.6		
05/16/2010	18:40:52	-6	0.0	8.35	1187.6		
05/16/2010	18:41:22	-6	0.0	8.35	1187.7		
05/16/2010	18:41:52	-7	0.0	8.35	1187.7		
05/16/2010	18:42:22	-7	0.0	8.35	1187.7		
05/16/2010	18:42:52	-7	0.0	8.35	1187.7		
05/16/2010	18:43:22	-7	0.0	8.35	1187.7		
05/16/2010	18:43:52	198	0.0	8.35	1187.7		
05/16/2010	18:44:22	10	0.0	8.35	1187.7		
05/16/2010	18:44:52	163	0.0	8.35	1187.7		
05/16/2010	18:45:22	138	5.6	8.35	1189.8		
05/16/2010	18:45:52	173	5.2	8.35	1191.5		
05/16/2010	18:46:22	-2	0.0	8.35	1193.5		
05/16/2010	18:46:52	-4	0.0	8.35	1193.5		
05/16/2010	18:47:22	-3	0.0	8.35	1193.5		
05/16/2010	18:47:52	-3	0.0	8.35	1193.5		
05/16/2010	18:48:22	-3	0.0	8.35	1193.5		
05/16/2010	18:48:52	-3	0.0	8.35	1193.5		
05/16/2010	18:49:22	-3	0.0	8.35	1193.5		

Well		Field		Job Start		Customer		Job Number	
SGU 8507A-25		N PARACHUTE		May/16/2010		ENCANA		B2K7-00077	
Date	Time 24-hr clock	Treating Pressure PSI	Flow Rate B/M	Density LB/G	Volume BBL	Message			
05/16/2010	18:50:22	-4	0.0	8.35	1193.5				
05/16/2010	18:50:52	-4	0.0	8.35	1193.5				
05/16/2010	18:51:22	-4	0.0	8.35	1193.5				
05/16/2010	18:51:52	-4	0.0	8.35	1193.5				
05/16/2010	18:52:22	-4	0.0	8.35	1193.5				
05/16/2010	18:52:52	-5	0.0	8.35	1193.5				
05/16/2010	18:53:22	-5	0.0	8.35	1193.5				
05/16/2010	18:53:52	-5	0.0	8.34	1193.5				
05/16/2010	18:54:22	-5	0.0	8.34	1193.5				
05/16/2010	18:54:52	-5	0.0	8.34	1193.5				
05/16/2010	18:55:22	25	2.5	8.18	1194.0				
05/16/2010	18:55:52	25	2.5	8.30	1195.3				
05/16/2010	18:56:02					Bump To 700psi			
05/16/2010	18:56:02	24	2.5	8.31	1195.7				
05/16/2010	18:56:17					End Job			
05/16/2010	18:56:17	24	2.5	8.28	1196.3				

Post Job Summary

Average Pump Rates, bbl/min				Volume of Fluid Injected, bbl			
Slurry	N2	Mud	Maximum Rate	Total Slurry	Mud	Spacer	N2
6.4		0.0	24.1	1196.7	0.0	357.6	
Treating Pressure Summary, psi				Breakdown Fluid			
Maximum	Final	Average	Bump Plug to	Breakdown	Type	Volume	Density
2171	24	260	700				
Avg. N2 Percent	Designed Slurry Volume	Displacement	Mix Water Temp	Cement Circulated to Surface?	<input checked="" type="checkbox"/>	Volume	200.0 bbl
	558.0 bbl	228.4 bbl	62 degF	Washed Thru Perfs	<input type="checkbox"/>	To	
Customer or Authorized Representative		Schlumberger Supervisor			Circulation Lost	<input type="checkbox"/>	Job Completed
NORM MCCREARY		JASON CRICK			-		<input checked="" type="checkbox"/>
					-		