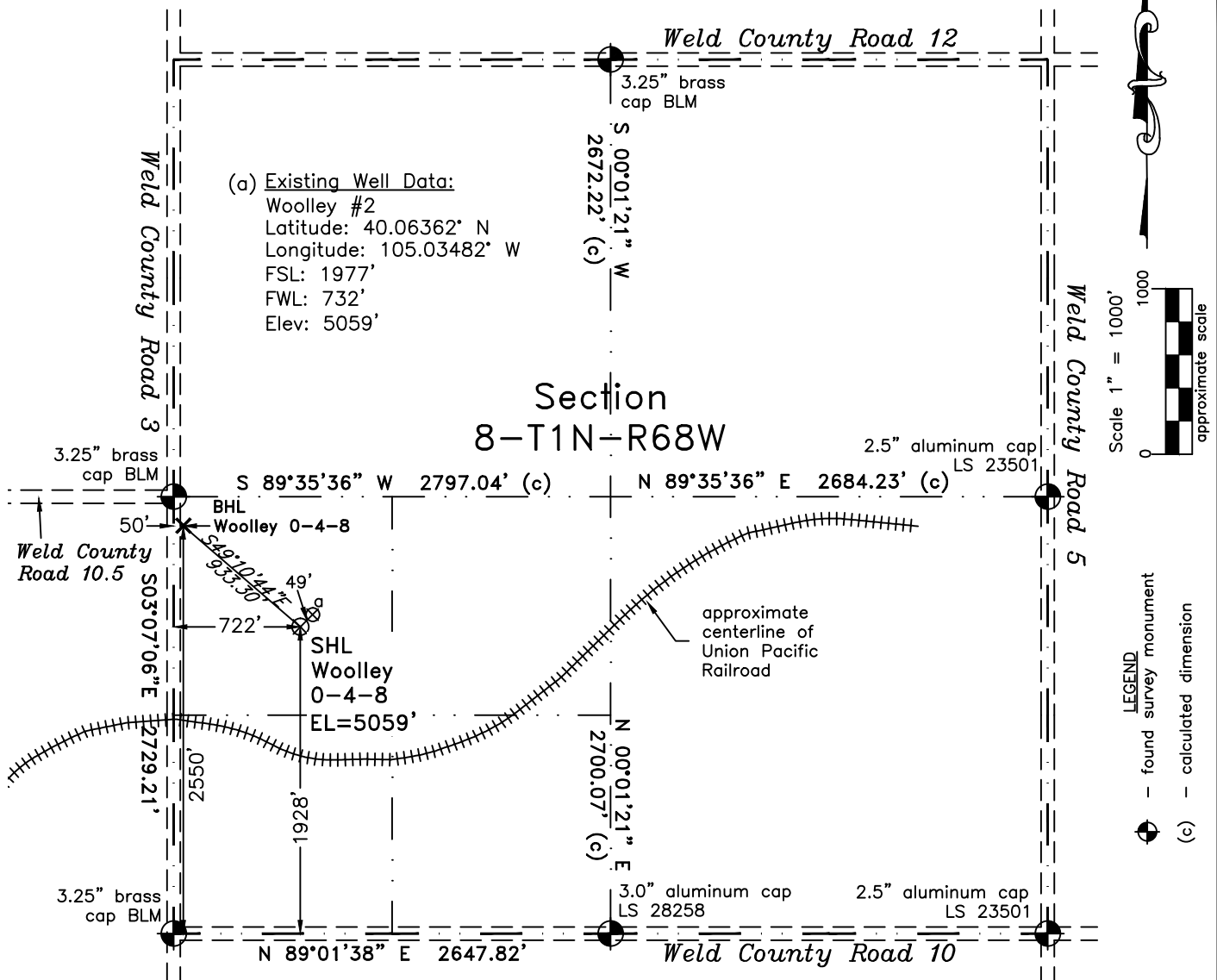


PLS Group, LLC
220 East Mulberry Street
Fort Collins, Colorado 80524

WELL LOCATION CERTIFICATE

THIS MAP DOES NOT
REPRESENT A BOUNDARY SURVEY



In accordance with a request from Doug Pearlman of EnCana Oil & Gas (USA) Inc., PLS Group, LLC has determined the location of the **Woolley 0-4-8** well site to be SHL: 1928' FSL and 722' FWL, (BHL 2550' FSL and 722' FWL) as measured at ninety (90) degrees from the section lines of Section 8, Township 1 North, Range 68 West, 6th Principal Meridian, County of Weld, CO.

Proposed Surface Hole Data:

Latitude: N 40.06349° BHL(40.06517°)
Longitude: W 105.03485° BHL(105.03736°)

Nearest: Building 350' northwest
Public Road 750' west
Property Line 575' southwest
PDOP: 1.2

Above Ground Utility 1,065' northwest
Railroad 615' southwest

Notes:

- 1) Bearings and distances based upon NAD 83 Colorado North State Plane Coordinates using RTK GPS observations taken on 11/03/2010 by operator Craig Burke.
- 2) Conversion factor to ground (1.000277368).
- 3) Elevations based on NAVD 88 GPS heights and Geoid 2003 corrections.
- 4) See improvement map for visible improvements within 400 feet of pad site.
- 5) The location falls on agricultural land.

NOTICE: According to Colorado law you MUST commence any legal action based upon any defect in this W.L.C. within three years after you first discover such defect. In no event may any action based upon any defect in this W.L.C. be commenced more than ten years from this said date of the certification shown hereon.

I hereby certify that this Well Location Certificate was prepared by me or my duly authorized supervisor, John Robert McGehee, for and on behalf of EnCana Oil & Gas (USA) Inc., that it is a true and correct copy of the original survey data and that it is not to be relied upon for establishment of boundaries, buildings, or other future improvement lines.

John Robert McGehee LS#38219
Job #: 10151.001