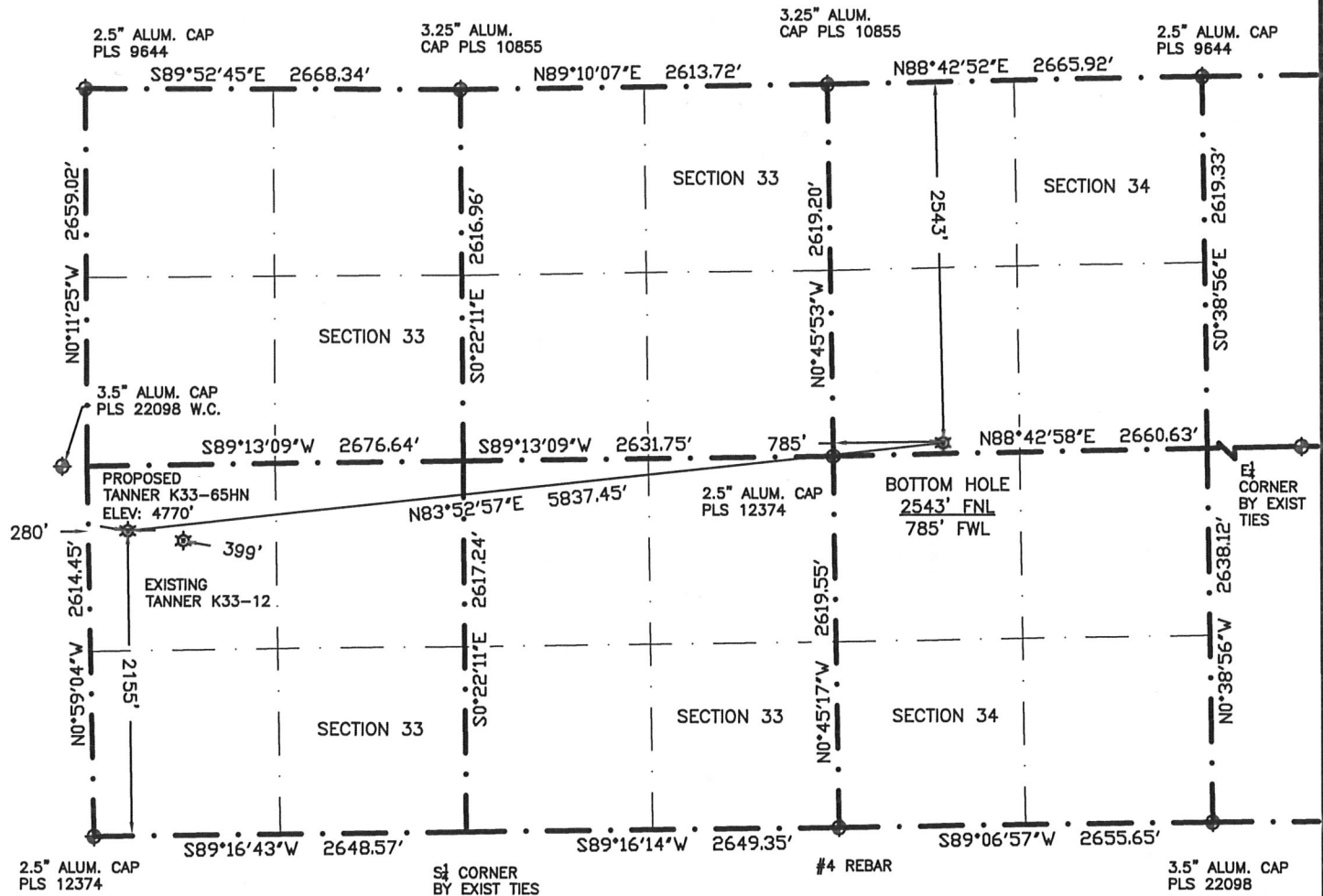


# WELL LOCATION CERTIFICATE

THIS MAP DOES NOT REPRESENT A BOUNDARY SURVEY

SECTIONS 33&34  
TOWNSHIP 4N  
RANGE 66W



LATITUDE & LONGITUDE (NAD83 SURFACE HOLE)

LATITUDE: N 40.26682

LONGITUDE: W 104.79094

PDOP: 2.1

QUARTER-QUARTER: NW $\frac{1}{4}$ SW $\frac{1}{4}$ , SECTION 33

NEAREST PROPERTY LINE: 114' NORTHWEST

LATITUDE & LONGITUDE (NAD83 BOTTOM HOLE)

LATITUDE: N 40.26840

LONGITUDE: W 104.77012

QUARTER-QUARTER: SW $\frac{1}{4}$ NW $\frac{1}{4}$ , SECTION 34

IN ACCORDANCE WITH A REQUEST BY ERIK VAN DECAR-NOBLE ENERGY INC., BOUNDARY BOYS, LLC... HAS DETERMINED THE LOCATION OF THE TANNER K33-65HN WELL TO BE 2155' FSL, 280' FWL, AS MEASURED AT NINETY (90) DEGREES FROM THE SECTION LINES, AND THE BOTTOM HOLE TO BE 2543' FNL, 785' FWL, SECTIONS 33 AND 34, TOWNSHIP 4 NORTH, RANGE 66 WEST, 6TH PRINCIPLE MERIDIAN, WELD COUNTY, COLORADO

I HEREBY CERTIFY THAT THIS WELL LOCATION CERTIFICATE WAS PREPARED BY ME, OR UNDER MY DIRECT SUPERVISION, THAT THE FIELD WORK WAS COMPLETED ON APRIL 11, 2011 FOR AND ON BEHALF OF NOBLE ENERGY INC., THAT IT IS NOT A LAND SURVEY PLAT OR AN IMPROVEMENT SURVEY PLAT, AND THAT IT IS NOT TO BE RELIED UPON FOR ESTABLISHMENT OF FENCE, BUILDING, OR OTHER FUTURE IMPROVEMENT LINES.

0 1200  
SCALE: 1"=1200'

- 1) BASIS OF BEARINGS FOR THIS MAP ARE BASED UPON GPS OBSERVATIONS MADE ON APRIL 11, 2011 BETWEEN MONUMENTS LOCATED AT THE NORTHWEST CORNER AND THE NE CORNER OF SAID SECTION 33 AND WITH ALL OTHER BEARINGS SHOWN HEREON RELATIVE THERETO.
- 2) ELEVATIONS ARE BASED UPON NGS OPUS SOLUTION, NAVD 88 DATUM
- 3) THE NEAREST EXISTING WELL IS TANNER K33-12, 399' EAST
- 4) SEE VISIBLE IMPROVEMENTS EXHIBIT FOR ALL IMPROVEMENTS WITH 400' IMPROVEMENT BUFFER
- 5) THE LOCATION FALLS IN PASTURE LAND

NOTICE: According to Colorado law you MUST commence any legal action based upon any defect in this W.L.C. within three years after you first discover such defect. In no event may any action based upon any defect in this W.L.C. be commenced more than ten years from this said date of the certification shown hereon.

## LEGEND



FOUND SURVEY MONUMENT PER  
MONUMENT RECORD-EXCEPTIONS NOTED



(C) CALCULATED

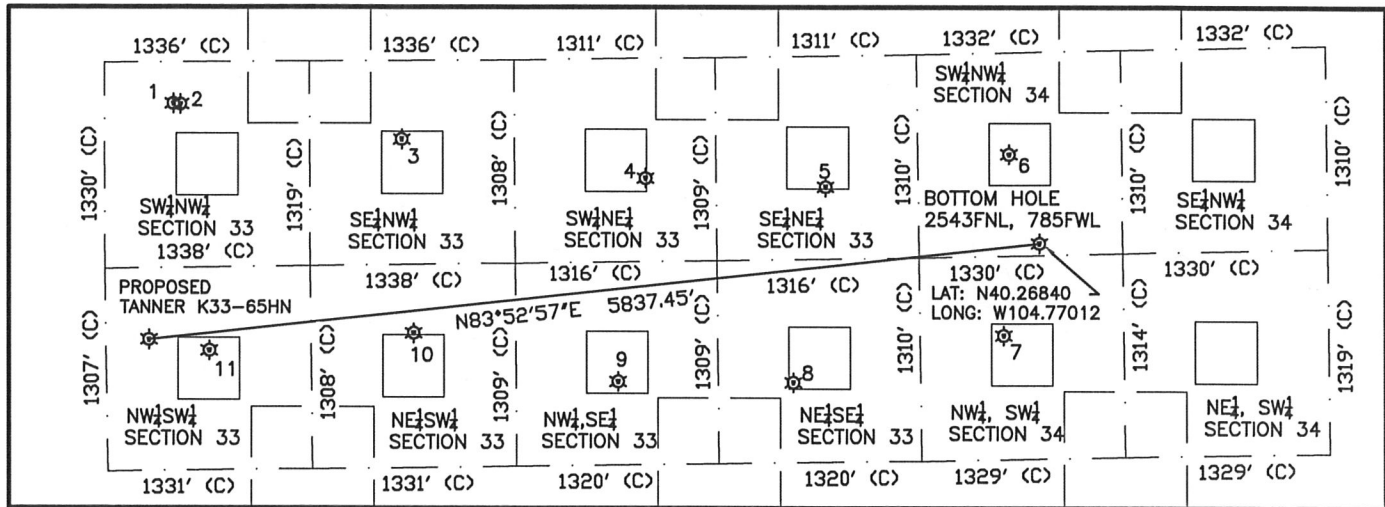


EXISTING WELL HEAD  
(UNLESS OTHERWISE NOTED)

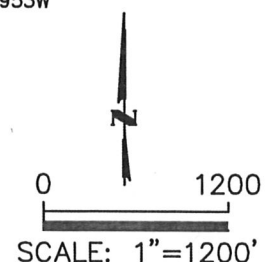


Gregory A. Clark  
Professional Land Surveyor Registration No. 32430  
State of Colorado

Job No. 1N0B0103



- |   |   |   |   |  |  |
|---|---|---|---|--|--|
| <p>①</p> <p>UPRC 33-5F</p> <p>SW<math>\frac{1}{4}</math>NW<math>\frac{1}{4}</math> (SECTION 33)</p> <p>1594' FNL</p> <p>450' FWL</p> <p>LAT- 40.27099N</p> <p>LONG- 104.79033W</p> <p>PDOP 1.8</p> <p>ELEV. 4759'</p>   | <p>②</p> <p>HUNT K33-19</p> <p>SW<math>\frac{1}{4}</math>NW<math>\frac{1}{4}</math> (SECTION 33)</p> <p>1597' FNL</p> <p>496' FWL</p> <p>LAT- 40.27098N</p> <p>LONG- 104.79016W</p> <p>PDOP 1.8</p> <p>ELEV. 4758'</p>  | <p>③</p> <p>UPRC 33-6F</p> <p>SE<math>\frac{1}{4}</math>NW<math>\frac{1}{4}</math> (SECTION 33)</p> <p>1819' FNL</p> <p>1936' FWL</p> <p>LAT- 40.27033N</p> <p>LONG- 104.78500W</p> <p>PDOP 1.8</p> <p>ELEV. 4764'</p>    | <p>④</p> <p>UPRC 33-7F</p> <p>SW<math>\frac{1}{4}</math>NE<math>\frac{1}{4}</math> (SECTION 33)</p> <p>2081' FNL</p> <p>1777' FEL</p> <p>LAT- 40.26961N</p> <p>LONG- 104.77931W</p> <p>PDOP 1.8</p> <p>ELEV. 4776'</p>    | <p>⑤</p> <p>UPRC 33-8F</p> <p>SE<math>\frac{1}{4}</math>NE<math>\frac{1}{4}</math> (SECTION 33)</p> <p>2153' FNL</p> <p>605' FEL</p> <p>LAT- 40.26943N</p> <p>LONG- 104.77511W</p> <p>PDOP 1.8</p> <p>ELEV. 4783'</p>    | <p>⑥</p> <p>HEITMAN K34-5</p> <p>SW<math>\frac{1}{4}</math>NW<math>\frac{1}{4}</math> (SECTION 34)</p> <p>1964' FNL</p> <p>595' FWL</p> <p>LAT- 40.26998N</p> <p>LONG- 104.77081W</p> <p>PDOP 2.2</p> <p>ELEV. 4782'</p> |
| <p>⑦</p> <p>SANDAU 34-12</p> <p>NW<math>\frac{1}{4}</math>SW<math>\frac{1}{4}</math> (SECTION 34)</p> <p>2111' FSL</p> <p>544' FWL</p> <p>LAT- 40.26677N</p> <p>LONG- 104.77097W</p> <p>PDOP 1.6</p> <p>ELEV. 4794'</p> | <p>⑧</p> <p>WEBBER K33-9</p> <p>NE<math>\frac{1}{4}</math>SE<math>\frac{1}{4}</math> (SECTION 33)</p> <p>1826' FSL</p> <p>831' FEL</p> <p>LAT- 40.26597N</p> <p>LONG- 104.77590W</p> <p>PDOP 1.7</p> <p>ELEV. 4789'</p> | <p>⑨</p> <p>WEBBER K33-10</p> <p>NW<math>\frac{1}{4}</math>SE<math>\frac{1}{4}</math> (SECTION 33)</p> <p>1847' FSL</p> <p>1974' FEL</p> <p>LAT- 40.26601N</p> <p>LONG- 104.77999W</p> <p>PDOP 1.8</p> <p>ELEV. 4782'</p> | <p>⑩</p> <p>TANNER K33-11</p> <p>NE<math>\frac{1}{4}</math>SW<math>\frac{1}{4}</math> (SECTION 33)</p> <p>2176' FSL</p> <p>2005' FWL</p> <p>LAT- 40.26690N</p> <p>LONG- 104.78476W</p> <p>PDOP 1.7</p> <p>ELEV. 4774'</p> | <p>⑪</p> <p>TANNER K33-12</p> <p>NW<math>\frac{1}{4}</math>SW<math>\frac{1}{4}</math> (SECTION 33)</p> <p>2081' FSL</p> <p>672' FWL</p> <p>LAT- 40.26662N</p> <p>LONG- 104.78953W</p> <p>PDOP 2.1</p> <p>ELEV. 4771'</p> |  |



1) THIS SKETCH DOES NOT REPRESENT A BOUNDARY SURVEY  
2) THE DATUM FOR THE LATITUDES AND LONGITUDES ON THIS SKETCH IS NAD83