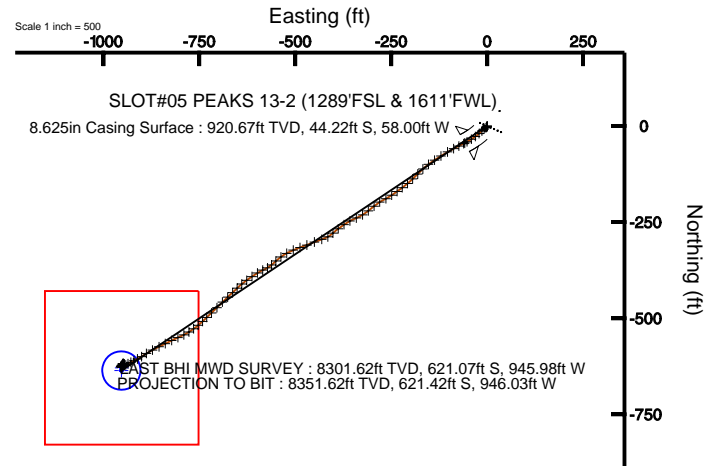
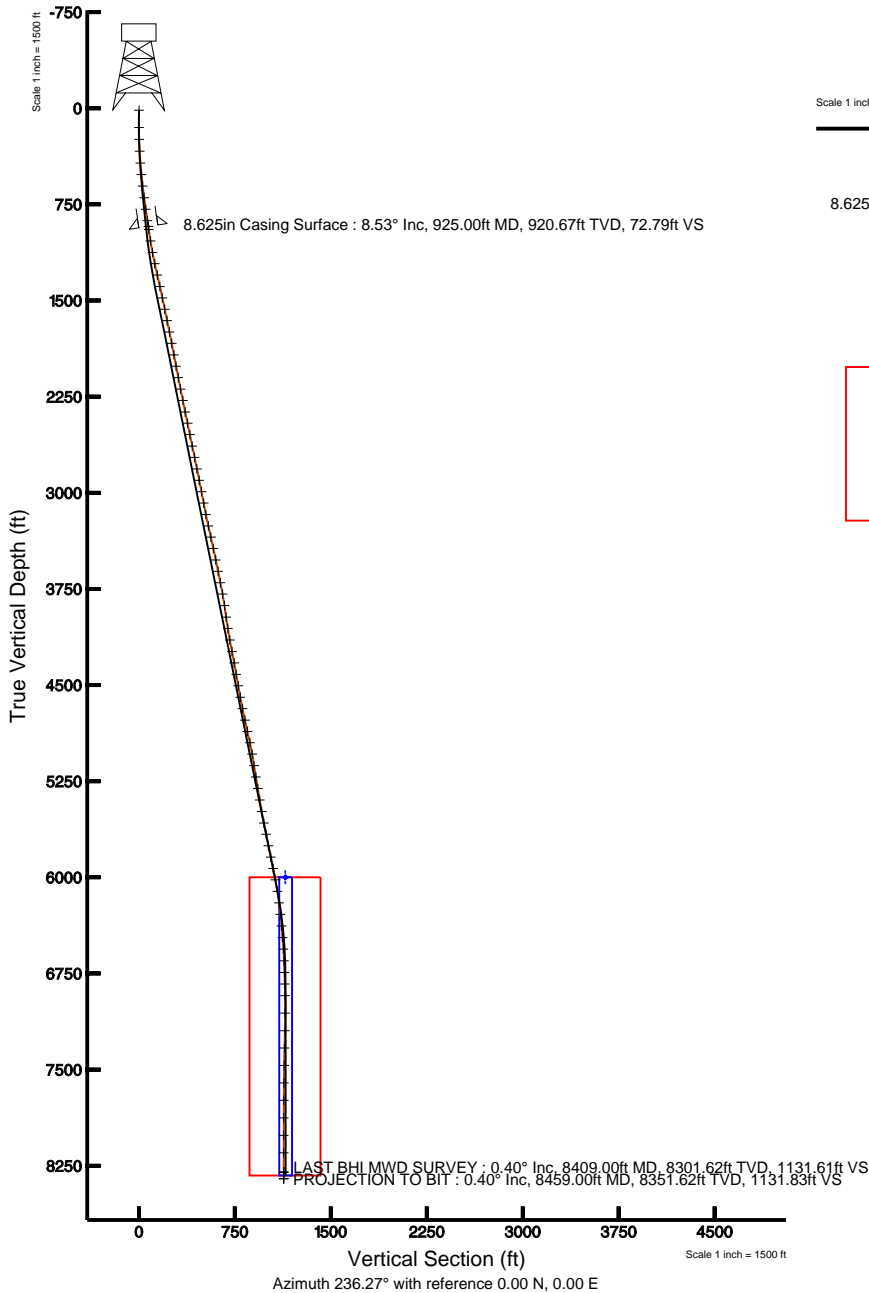




# KERR MCGEE OIL & GAS ONSHORE LP

Location: COLORADO Slot: SLOT#05 PEAKS 13-2 (1289'FSL & 1611'FWL)  
Field: WELD COUNTY (KERR MCGEE) Well: PEAKS 13-2  
Facility: SEC.02-T1N-R68W Wellbore: PEAKS 13-2 PWB

Plot reference wellpath is PEAKS 13-2 (REV-A.0) PWP	
True vertical depths are referenced to XTREME 12 (RKB)	Grid System: NAD83 / Lambert Colorado State Planes, Northern Zone (501), US feet
Measured depths are referenced to XTREME 12 (RKB)	North Reference: True north
XTREME 12 (RKB) to Mean Sea Level: 5047 feet	Scale: True distance
Mean Sea Level to Mud line (Facility: SEC.02-T1N-R68W): 0 feet	Depths are in feet
Coordinates are in feet referenced to Slot	Created by: cookdann on 5/18/2011



BGGM (1945.0 to 2012.0) Dip: 66.77° Field: 52979 nT  
Magnetic North is 8.94 degrees East of True North (at 3/25/2011)

To correct azimuth from Magnetic to True add 8.94 degrees  
For example: if the Magnetic North Azimuth = 90 degs, then the Grid North Azimuth = 90 + 8.94 = 98.94



# Actual Wellpath Report

PEAKS 13-2 AWP

Page 1 of 5



INTEQ

## REFERENCE WELLPATH IDENTIFICATION

Operator	KERR MCGEE OIL & GAS ONSHORE LP	Slot	SLOT#05 PEAKS 13-2 (1289'FSL & 1611'FWL)
Area	COLORADO	Well	PEAKS 13-2
Field	WELD COUNTY (KERR MCGEE)	Wellbore	PEAKS 13-2 AWP
Facility	SEC.02-T1N-R68W		

## REPORT SETUP INFORMATION

Projection System	NAD83 / Lambert Colorado State Planes, Northern Zone (501), US feet	Software System	WellArchitect® 2.0
North Reference	True	User	Cookdanm
Scale	0.999961	Report Generated	5/18/2011 at 3:32:17 PM
Convergence at slot	0.34° East	Database/Source file	Denver Server/PEAKS_13-2_AWP.xml

## WELLPATH LOCATION

	Local coordinates		Grid coordinates		Geographic coordinates	
	North[ft]	East[ft]	Easting[USft]	Northing[USft]	Latitude	Longitude
Slot Location	16.03	-36.66	3147135.91	1271188.00	40°04'35.774"N	104°58'27.152"W
Facility Reference Pt			3147172.67	1271172.18	40°04'35.616"N	104°58'26.681"W
Field Reference Pt			3197771.84	1268891.29	40°04'09.600"N	104°47'36.000"W

## WELLPATH DATUM

Calculation method	Minimum curvature	XTREME 12 (RKB) to Facility Vertical Datum	5047.00ft
Horizontal Reference Pt	Slot	XTREME 12 (RKB) to Mean Sea Level	5047.00ft
Vertical Reference Pt	XTREME 12 (RKB)	Facility Vertical Datum to Mud Line (Facility)	0.00ft
MD Reference Pt	XTREME 12 (RKB)	Section Origin	N 0.00, E 0.00 ft
Field Vertical Reference	Mean Sea Level	Section Azimuth	236.27°



# Actual Wellpath Report

PEAKS 13-2 AWP

Page 2 of 5



INTEQ

## REFERENCE WELLPATH IDENTIFICATION

Operator	KERR MCGEE OIL & GAS ONSHORE LP	Slot	SLOT#05 PEAKS 13-2 (1289'FSL & 1611'FWL)
Area	COLORADO	Well	PEAKS 13-2
Field	WELD COUNTY (KERR MCGEE)	Wellbore	PEAKS 13-2 AWP
Facility	SEC.02-T1N-R68W		

## WELLPATH DATA (90 stations) † = interpolated/extrapolated station

MD [ft]	Inclination [°]	Azimuth [°]	TVD [ft]	Vert Sect [ft]	North [ft]	East [ft]	DLS [°/100ft]	Comments
0.00†	0.000	160.100	0.00	0.00	0.00	0.00	0.00	
15.00	0.000	160.100	15.00	0.00	0.00	0.00	0.00	
149.00	0.700	160.100	149.00	0.20	-0.77	0.28	0.52	
242.00	1.400	217.100	241.98	1.40	-2.21	-0.21	1.26	
334.00	3.000	231.500	333.91	4.87	-4.61	-2.78	1.83	
427.00	4.300	236.800	426.72	10.78	-8.03	-7.60	1.44	
517.00	5.400	225.500	516.40	18.31	-12.85	-13.44	1.61	
608.00	7.400	226.900	606.83	28.30	-19.85	-20.78	2.20	
699.00	8.000	236.800	697.01	40.42	-27.32	-30.35	1.60	
790.00	8.200	236.100	787.10	53.24	-34.41	-41.04	0.25	
880.00	8.400	242.100	876.16	66.20	-41.07	-52.18	0.99	
949.00	8.600	240.600	944.41	76.35	-45.96	-61.12	0.43	
1040.00	8.900	245.100	1034.35	90.09	-52.26	-73.44	0.82	
1131.00	10.400	244.200	1124.06	105.19	-58.80	-87.22	1.66	
1221.00	12.700	239.200	1212.23	123.12	-67.40	-103.03	2.78	
1312.00	12.800	237.100	1300.99	143.18	-78.00	-120.09	0.52	
1403.00	12.600	236.400	1389.76	163.19	-88.97	-136.82	0.28	
1494.00	11.800	234.300	1478.71	182.41	-99.89	-152.64	1.01	
1585.00	12.200	226.600	1567.72	201.19	-111.93	-167.19	1.81	
1675.00	11.800	225.200	1655.76	219.60	-124.95	-180.63	0.55	
1766.00	11.500	226.900	1744.88	237.68	-137.70	-193.85	0.50	
1857.00	11.500	230.800	1834.06	255.66	-149.63	-207.50	0.85	
1948.00	10.600	231.500	1923.37	273.03	-160.58	-221.08	1.00	
2038.00	10.700	236.800	2011.82	289.64	-170.30	-234.55	1.09	
2129.00	10.700	233.300	2101.24	306.52	-179.98	-248.40	0.71	
2220.00	12.200	243.500	2190.43	324.50	-189.32	-263.78	2.76	
2311.00	11.000	238.900	2279.58	342.71	-198.09	-279.82	1.66	
2402.00	12.200	230.100	2368.72	360.95	-208.75	-294.63	2.35	
2492.00	12.500	232.200	2456.64	380.12	-220.82	-309.62	0.60	
2583.00	10.600	239.100	2545.80	398.30	-231.15	-324.59	2.58	
2674.00	12.300	246.300	2634.99	416.21	-239.35	-340.65	2.44	
2765.00	11.200	243.100	2724.08	434.53	-247.24	-357.40	1.40	
2856.00	11.700	234.500	2813.28	452.53	-256.60	-372.80	1.95	
2947.00	12.000	234.000	2902.34	471.20	-267.52	-387.96	0.35	
3037.00	11.000	226.900	2990.53	489.02	-278.89	-401.80	1.92	
3128.00	9.900	242.100	3080.04	505.38	-288.48	-415.06	3.25	
3219.00	11.800	252.200	3169.42	522.11	-294.99	-430.83	2.95	
3310.00	14.200	248.400	3258.08	541.97	-301.94	-450.07	2.80	
3400.00	12.900	247.700	3345.57	562.61	-309.82	-469.63	1.46	
3491.00	11.300	253.700	3434.55	581.08	-316.17	-487.59	2.23	
3582.00	12.700	245.200	3523.57	599.47	-322.87	-505.23	2.47	
3673.00	11.500	241.000	3612.55	618.39	-331.47	-522.25	1.63	
3764.00	11.000	234.700	3701.80	636.11	-340.88	-537.27	1.46	
3854.00	10.800	228.700	3790.18	653.05	-351.41	-550.61	1.28	
3945.00	8.300	225.500	3879.91	667.96	-361.64	-561.70	2.81	



# Actual Wellpath Report

PEAKS 13-2 AWP

Page 3 of 5



INTEQ

## REFERENCE WELLPATH IDENTIFICATION

Operator	KERR MCGEE OIL & GAS ONSHORE LP	Slot	SLOT#05 PEAKS 13-2 (1289'FSL & 1611'FWL)
Area	COLORADO	Well	PEAKS 13-2
Field	WELD COUNTY (KERR MCGEE)	Wellbore	PEAKS 13-2 AWP
Facility	SEC.02-T1N-R68W		

## WELLPATH DATA (90 stations)

MD [ft]	Inclination [°]	Azimuth [°]	TVD [ft]	Vert Sect [ft]	North [ft]	East [ft]	DLS [°/100ft]	Comments
4036.00	8.200	242.800	3969.98	680.86	-369.21	-572.16	2.72	
4126.00	9.600	246.300	4058.90	694.63	-375.16	-584.74	1.67	
4217.00	10.200	237.500	4148.55	710.16	-382.54	-598.48	1.79	
4308.00	11.300	235.700	4237.95	727.13	-391.90	-612.64	1.26	
4399.00	10.100	234.700	4327.37	744.02	-401.53	-626.52	1.33	
4490.00	10.200	231.900	4416.94	760.03	-411.12	-639.38	0.55	
4580.00	10.600	223.100	4505.47	776.04	-422.08	-651.30	1.82	
4671.00	10.300	227.600	4594.96	792.23	-433.68	-663.03	0.96	
4762.00	11.700	228.700	4684.29	809.42	-445.25	-675.97	1.56	
4853.00	12.400	225.200	4773.28	828.15	-458.23	-689.84	1.11	
4944.00	13.400	223.800	4861.99	848.04	-472.72	-704.07	1.15	
5034.00	11.900	226.900	4949.80	867.38	-486.59	-718.06	1.83	
5125.00	10.000	228.700	5039.14	884.47	-498.22	-730.85	2.12	
5216.00	9.100	223.100	5128.88	899.31	-508.69	-741.70	1.42	
5306.00	10.000	231.900	5217.64	914.03	-518.70	-752.71	1.90	
5397.00	9.200	234.300	5307.36	929.18	-527.82	-764.84	0.98	
5488.00	9.300	238.200	5397.18	943.80	-535.94	-777.00	0.70	
5579.00	10.300	242.400	5486.85	959.24	-543.59	-790.46	1.35	
5670.00	11.300	248.000	5576.24	976.06	-550.70	-805.93	1.59	
5760.00	11.600	243.500	5664.45	993.67	-558.04	-822.21	1.05	
5851.00	11.700	243.100	5753.58	1011.90	-566.30	-838.62	0.14	
5942.00	11.800	243.800	5842.67	1030.29	-574.58	-855.20	0.19	
6033.00	12.400	243.100	5931.65	1049.22	-583.11	-872.26	0.68	
6123.00	10.600	237.500	6019.84	1067.09	-591.93	-887.86	2.35	
6214.00	8.500	236.400	6109.57	1082.18	-600.15	-900.53	2.32	
6305.00	7.300	244.900	6199.71	1094.63	-606.32	-911.36	1.84	
6396.00	5.600	240.600	6290.13	1104.77	-610.95	-920.47	1.94	
6486.00	5.900	245.600	6379.68	1113.71	-615.02	-928.51	0.65	
6577.00	4.700	241.000	6470.29	1122.04	-618.76	-936.03	1.40	
6668.00	3.700	241.000	6561.04	1128.69	-621.99	-941.86	1.10	
6759.00	2.900	244.900	6651.89	1133.89	-624.39	-946.51	0.91	
6850.00	2.100	248.000	6742.81	1137.80	-625.99	-950.14	0.89	
6940.00	1.300	261.400	6832.77	1140.34	-626.76	-952.68	0.99	
7031.00	0.500	274.100	6923.75	1141.58	-626.89	-954.09	0.90	
7167.00	0.400	339.100	7059.75	1141.95	-626.40	-954.85	0.36	
7304.00	0.900	22.300	7196.74	1140.95	-624.96	-954.62	0.49	
7440.00	2.000	41.000	7332.70	1137.77	-622.18	-952.65	0.87	
7576.00	0.900	24.800	7468.65	1134.57	-619.42	-950.65	0.86	
7712.00	0.500	70.100	7604.64	1133.09	-618.25	-949.64	0.48	
7848.00	0.500	94.800	7740.64	1132.05	-618.10	-948.49	0.16	
7985.00	0.400	125.300	7877.63	1131.41	-618.42	-947.51	0.19	
8121.00	0.400	151.400	8013.63	1131.28	-619.11	-946.89	0.13	
8257.00	0.500	143.600	8149.63	1131.29	-620.01	-946.31	0.09	
8409.00	0.400	186.800	8301.62	1131.61	-621.07	-945.98	0.23	LAST BHI MWD SURVEY
8459.00	0.400	186.800	8351.62	1131.83	-621.42	-946.03	0.00	PROJECTION TO BIT



# Actual Wellpath Report

PEAKS 13-2 AWP

Page 4 of 5



INTEQ

REFERENCE WELLPATH IDENTIFICATION			
Operator	KERR MCGEE OIL & GAS ONSHORE LP	Slot	SLOT#05 PEAKS 13-2 (1289'FSL & 1611'FWL)
Area	COLORADO	Well	PEAKS 13-2
Field	WELD COUNTY (KERR MCGEE)	Wellbore	PEAKS 13-2 AWP
Facility	SEC.02-T1N-R68W		

HOLE & CASING SECTIONS				Ref Wellbore: PEAKS 13-2 AWP		Ref Wellpath: PEAKS 13-2 AWP			
String/Diameter	Start MD [ft]	End MD [ft]	Interval [ft]	Start TVD [ft]	End TVD [ft]	Start N/S [ft]	Start E/W [ft]	End N/S [ft]	End E/W [ft]
12.25in Open Hole	15.00	925.00	910.00	15.00	920.67	0.00	0.00	-44.22	-58.00
8.625in Casing Surface	15.00	925.00	910.00	15.00	920.67	0.00	0.00	-44.22	-58.00
7.875in Open Hole	925.00	8459.00	7534.00	920.67	8351.62	-44.22	-58.00	-621.42	-946.03

TARGETS									
Name	MD [ft]	TVD [ft]	North [ft]	East [ft]	Grid East [srv ft]	Grid North [srv ft]	Latitude	Longitude	Shape
PEAKS 13-2 GEO TARGET 50' RADIUS (660'FSL & 660'FWL, REV-1)		6000.00	-636.40	-953.19	3146186.55	1270545.98	40°04'29.485"N	104°58'39.414"W	circle
PEAKS 13-2 LEGAL BOX (207'N,193'S,201'W,199'E OF GEO TARGET)		6000.00	-629.40	-952.19	3146187.51	1270552.99	40°04'29.554"N	104°58'39.401"W	square

WELLPATH COMPOSITION			Ref Wellbore: PEAKS 13-2 AWP	Ref Wellpath: PEAKS 13-2 AWP	
Start MD [ft]	End MD [ft]	Positional Uncertainty Model	Log Name/Comment		Wellbore
15.00	880.00	NaviTrak (Standard)	BHI MWD SURVEYS 12.25 HOLE <149-880>		PEAKS 13-2 AWP
880.00	8409.00	NaviTrak (Standard)	BHI MWD SURVEYS 7.875 HOLE <949-8409>		PEAKS 13-2 AWP
8409.00	8459.00	Blind Drilling (std)	Projection to bit		PEAKS 13-2 AWP



# Actual Wellpath Report

PEAKS 13-2 AWP

Page 5 of 5



INTEQ

## REFERENCE WELLPATH IDENTIFICATION

Operator	KERR MCGEE OIL & GAS ONSHORE LP	Slot	SLOT#05 PEAKS 13-2 (1289'FSL & 1611'FWL)
Area	COLORADO	Well	PEAKS 13-2
Field	WELD COUNTY (KERR MCGEE)	Wellbore	PEAKS 13-2 AWP
Facility	SEC.02-T1N-R68W		

## WELLPATH COMMENTS

MD [ft]	Inclination [°]	Azimuth [°]	TVD [ft]	Comment
8409.00	0.400	186.800	8301.62	LAST BHI MWD SURVEY
8459.00	0.400	186.800	8351.62	PROJECTION TO BIT