

SYNERGY RESOURCES CORPORATION
20203 HIGHWAY 60
PLATTEVILLE, Colorado

SRC State 16TD

Ensign 33

Post Job Summary

Cement Production Casing

Prepared for:	Don Libhart
Date Prepared:	6/9/2010
Version: 1	

Service Supervisor: Michael Blake

Submitted by: Wes Aaron

HALLIBURTON

HALLIBURTON

Service Supervisor Reports

Job Log

Date/Time	Chart #	Activity Code	Pump Rate	Cum Vol	Pump		Pressure (psig)	Comments
06/07/2010 00:40		Safety Meeting						
06/07/2010 01:12		Start Job						
06/07/2010 01:14		Test Lines	0.5	1			3855.0	TEST PUMPS AND LINES
06/07/2010 01:18		Pump Water	5	20			595.0	PUMP WATER SPACER
06/07/2010 01:21		Pump Spacer 1	5	24			720.0	PUMP MUD FLUSH
06/07/2010 01:25		Pump Water	5	10			625.0	PUMP WATER SPACER AND CLAY FIX
06/07/2010 01:27		Pump Lead Cement	8	121			1025.0	PUMP (360 sks) OF ECONOCEM CEMENT AT 12.5#
06/07/2010 01:42		Pump Tail Cement	8	94			315.0	PUMP (310 sks) OF FRACCEM CEMENT AT 13.5#
06/07/2010 01:53		Drop Top Plug						SHUT DOWN AND DROP PLUG AND CLEAN LINES
06/07/2010 01:58		Pump Displacement	8	122			1570.0	PUMP DISPLACEMENT WITH WATER AND CLAY FIX
06/07/2010 02:16		Bump Plug					2430.0	BUMP PLUG AND RELEASED BACK AND CHECK FLOATS HELD
06/07/2010 02:20		End Job						
06/07/2010 22:16		Safety Huddle						
06/07/2010 23:30		Arrive at Location from Service Center						

The Road to Excellence Starts with Safety

Sold To #: 359915	Ship To #: 2788320	Quote #:	Sales Order #: 7421689
Customer: SYNERGY RESOURCES CORPORATION		Customer Rep: Libhart, Don	
Well Name: SRC State		Well #: 16TD	API/UWI #: 05-123-30742-00
Field: WATTENBERG	City (SAP): JOHNSTOWN	County/Parish: Weld	State: Colorado
Contractor: Ensign		Rig/Platform Name/Num: 33	
Job Purpose: Cement Production Casing			
Well Type: Development Well		Job Type: Cement Production Casing	
Sales Person: FLING, MATTHEW		Srvc Supervisor: BLAKE, MICHAEL	MBU ID Emp #: 305760

Job Personnel

HES Emp Name	Exp Hrs	Emp #	HES Emp Name	Exp Hrs	Emp #	HES Emp Name	Exp Hrs	Emp #
BANUELOS, GUADALUPE		372277	BLAKE, MICHAEL James		305760	SAWCEDA, JIMMY		?
WILEY, JAMES A		440080						

Equipment

HES Unit #	Distance-1 way	HES Unit #	Distance-1 way	HES Unit #	Distance-1 way	HES Unit #	Distance-1 way
10824253C	30 mile	10866493C	30 mile	10972458	30 mile	10982754C	30 mile
10988836C	30 mile						

Job Hours

Date	On Location Hours	Operating Hours	Date	On Location Hours	Operating Hours	Date	On Location Hours	Operating Hours
TOTAL	Total is the sum of each column separately							

Job

Job Times

Formation Name					Date				Time	Time Zone	
Formation Depth (MD)	Top			Bottom			Called Out	07 - Jun - 2010	16:00	MST	
Form Type				BHST				On Location	07 - Jun - 2010	23:30	MST
Job depth MD	7930. ft			Job Depth TVD		7930. ft		Job Started	08 - Jun - 2010	01:12	MST
Water Depth				Wk Ht Above Floor				Job Completed	08 - Jun - 2010	02:20	MST
Perforation Depth (MD)	From			To			Departed Loc	08 - Jun - 2010	03:30	MST	

Well Data

Description	New / Used	Max pressure psig	Size in	ID in	Weight lbm/ft	Thread	Grade	Top MD ft	Bottom MD ft	Top TVD ft	Bottom TVD ft
Open Hole				7.875				635.	7930.	.	.
Production Casing	New		4.5	4.	11.6			.	7900.		
Surface Casing	Used		8.625	8.097	24.		J-55	.	635.	.	.

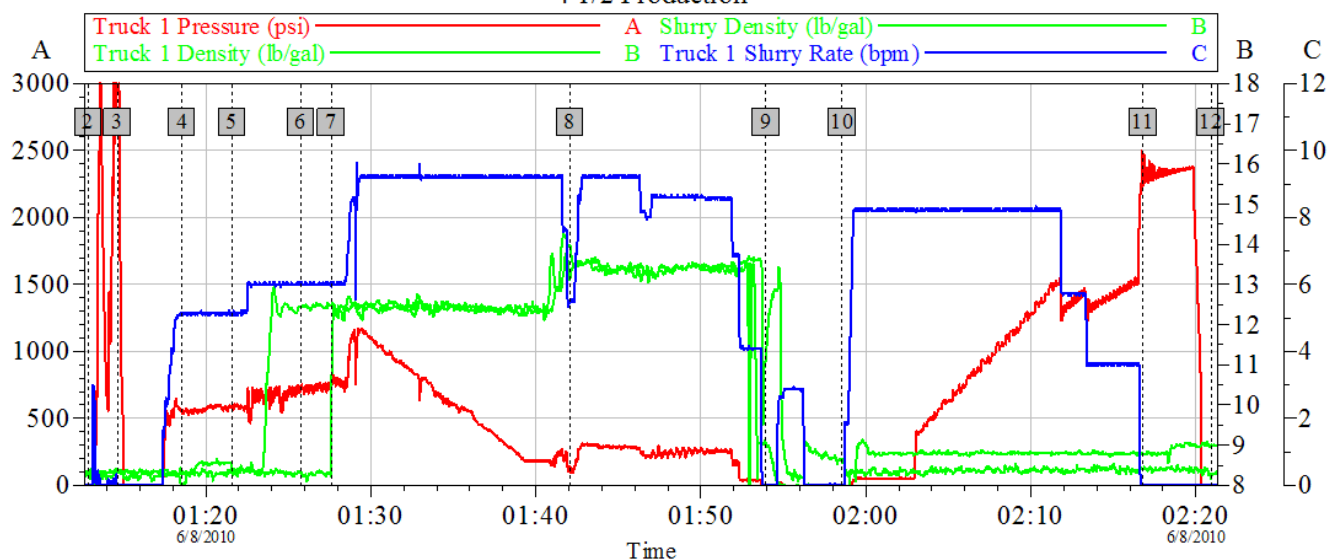
Sales/Rental/3rd Party (HES)

Description	Qty	Qty uom	Depth	Supplier
SHOE,FLT,4-1/2 8RD,2-3/4 SSII	1	EA		
CLR,FLT,4-1/2 8RD,9.5-13.5PPF,2-3/4	1	EA		
CENTRALIZER ASSY - API - 4-1/2 CSG X	30	EA		
CLAMP - LIMIT - 4-1/2 - HINGED -	1	EA		
KIT,HALL WELD-A	1	EA		
PLUG ASSY - 3W LATCHDOWN - 4-1/2 IN	1	EA		

Description										Qty	Qty uom	Depth	Supplier		
BAFFLE ASSY - 4-1/2 8RD LATCHDOWN PLUG										1	EA				
Tools and Accessories															
Type	Size	Qty	Make	Depth	Type	Size	Qty	Make	Depth	Type	Size	Qty	Make		
Guide Shoe					Packer					Top Plug					
Float Shoe					Bridge Plug					Bottom Plug					
Float Collar					Retainer					SSR plug set					
Insert Float										Plug Container					
Stage Tool										Centralizers					
Miscellaneous Materials															
Gelling Agt			Conc		Surfactant			Conc		Acid Type			Qty	Conc %	
Treatment Fld			Conc		Inhibitor			Conc		Sand Type			Size	Qty	
Fluid Data															
Stage/Plug #: 1															
Fluid #	Stage Type		Fluid Name				Qty	Qty uom	Mixing Density lbm/gal	Yield ft3/sk	Mix Fluid Gal/sk	Rate bbl/min	Total Mix Fluid Gal/sk		
1	Water Spacer						20.00	bbl	8.33	.0	.0	5.0			
2	MUD FLUSH III		MUD FLUSH III - SBM (528788)				24.00	bbl	8.4	.0	.0	5.0			
3	Cement 12.5#		ECONOCHEM (TM) SYSTEM (452992)				360.0	sacks	12.5	1.96	10.7	5.0	10.7		
	10.696 Gal		FRESH WATER												
4	Cement 13.5#		FRACCHEM (TM) SYSTEM (452963)				310.0	sacks	13.5	1.7	8.16	5.0	8.16		
	8.162 Gal		FRESH WATER												
Calculated Values			Pressures			Volumes									
Displacement			Shut In: Instant			Lost Returns			Cement Slurry			Pad			
Top Of Cement			5 Min			Cement Returns			Actual Displacement			Treatment			
Frac Gradient			15 Min			Spacers			Load and Breakdown			Total Job			
Rates															
Circulating			Mixing			Displacement			Avg. Job						
Cement Left In Pipe		Amount	10 ft	Reason	Shoe Joint										
Frac Ring # 1 @	ID		Frac ring # 2 @	ID		Frac Ring # 3 @	ID		Frac Ring # 4 @	ID					
The Information Stated Herein Is Correct					Customer Representative Signature										

HALLIBURTON

Synergy - SRC State 16 TD 4 1/2 Production



Global Event Log			
Intersection	TIP	Intersection	TIP
2 Start Job	01:12:53 -51.66	3 Test Lines	01:14:39 4474
4 Pump Water	01:18:33 555.9	5 Pump Mud Flush	01:21:35 587.1
6 Pump Water	01:25:46 715.3	7 Pump Econocem Cement @ 12.5#	01:27:36 769.1
8 Pump Frac Cement @13.5#	01:42:04 111.0	9 Drop Plug	01:53:57 -56.61
10 Pump Displacement	01:58:34 -54.63	11 Bump Plug	02:16:48 2259
12 End Job	02:20:56 -52.71		

Customer: Synergy
Well Description: Prod.

Job Date: 07-Jun-2010
UWI:

Sales Order #: 7421689

OptiCem v6.4.2
08-Jun-10 02:28