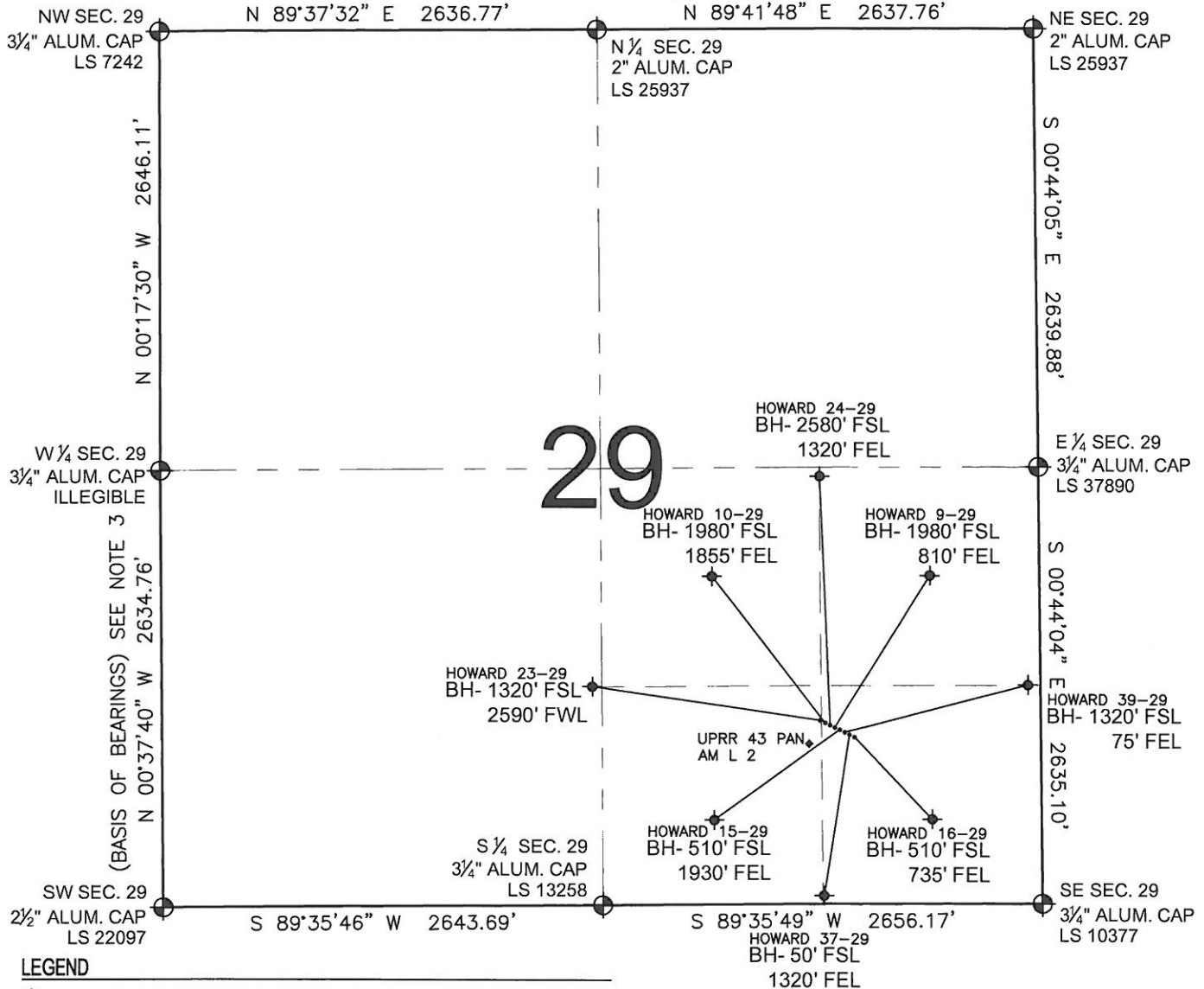


# PAD DRAWING: HOWARD 8 PAD

SECTION 29, TOWNSHIP 1 NORTH, RANGE 67 WEST, 6TH P.M.



## LEGEND

- = EXISTING MONUMENT
- ◆ = BOTTOM HOLE
- BH= BOTTOM HOLE
- = PROPOSED WELL
- ◆ = EXISTING WELL

## NOTES:

- THIS FIELD SURVEY CONFORMS TO THE MINIMUM STANDARDS SET BY THE C.O.G.C.C., RULE NO. 215
- HORIZONTAL POSITIONS AND ORTHOMETRIC ELEVATIONS SHOWN AT THE WELL HEAD, ARE BASED ON GPS-RTK POSITIONS DERIVED FROM MINIMUM 2-HOUR STATIC OBSERVATIONS CORRECTED BY THE NATIONAL GEODETIC SURVEY ONLINE POSITIONING USER SERVICE, O.P.U.S. DATUM: HORIZONTAL = NAD83/2007, VERTICAL = NAVD88
- THE BASIS OF BEARINGS ARE STATE PLANE COORDINATE SYSTEM GRID BEARINGS SHOWN HEREON BETWEEN THE DESCRIBED THE MONUMENTS SHOWN HEREON.
- GRID DISTANCES ARE SHOWN, AS MEASURED IN THE FIELD, WITH TIES TO WELLS MEASURED PERPENDICULAR TO SECTION LINES.

## NOTES:

- HOWARD 23-29 TO BE AT 1107' FSL, 1332' FEL.
- BOTTOM HOLE AT 1320' FSL & 2590' FWL.
- HOWARD 10-29 TO BE AT 1103' FSL, 1323' FEL.
- BOTTOM HOLE AT 1980' FSL & 1855' FEL.
- HOWARD 24-29 TO BE AT 1099' FSL, 1314' FEL.
- BOTTOM HOLE AT 2580' FSL & 1320' FEL.
- HOWARD 9-29 TO BE AT 1094' FSL, 1305' FEL.
- BOTTOM HOLE AT 1980' FSL & 810' FEL.
- HOWARD 15-29 TO BE AT 1090' FSL, 1296' FEL.
- BOTTOM HOLE AT 510' FSL & 1930' FEL.
- HOWARD 39-29 TO BE AT 1085' FSL, 1287' FEL.
- BOTTOM HOLE AT 1320' FSL & 75' FEL.
- HOWARD 37-29 TO BE AT 1081' FSL, 1278' FEL.
- BOTTOM HOLE AT 50' FSL & 1320' FEL.
- HOWARD 16-29 TO BE AT 1077' FSL, 1269' FEL.
- BOTTOM HOLE AT 510' FSL & 735' FEL.
- UPRR 43 PAN AM L 2 IS AT 1063' FSL, 1354' FEL.

PREPARED BY:

**PFS**

Petroleum Field Services, LLC  
1801 W. 13th Ave.  
Denver, CO 80204



KERR-MCGEE OIL & GAS ONSHORE LP

FIELD DATE:  
03-17-11

DRAWING DATE:  
05-16-11

BY:  
SMF & TJN

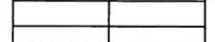
PAD NAME:  
HOWARD 8 PAD

SURFACE LOCATION:

WELD COUNTY, COLORADO  
SE 1/4 SE 1/4, SEC. 29, T1N, R67W  
SW 1/4 SE 1/4, SEC. 29, T1N, R67W



0 500 1000



SCALE: 1"=1000'