

**CHEVRON - MID-CONTINENT EBIZ
11111 S WILCREST DR - DO NOT MAIL
HOUSTON, Texas**

SKR
SKR 598-36-AV-11

CHEVRON/H&P/318

Post Job Summary

Cement Surface Casing

Prepared for: KEN JAPP
Date Prepared: 08/17/08
Version: 1

Service Supervisor: CALDWELL, JEFFREY

Submitted by:

HALLIBURTON

The Road to Excellence Starts with Safety

Sold To #: 338668		Ship To #: 2666601		Quote #:		Sales Order #: 6109384	
Customer: CHEVRON - MID-CONTINENT EBIZ				Customer Rep: Meier, Dan			
Well Name: SKR			Well #: 598-36-AV-11			API/UWI #:	
Field: WILDCAT		City (SAP): PARACHUTE		County/Parish: Garfield		State: Colorado	
Contractor: CHEVRON			Rig/Platform Name/Num: H&P 318				
Job Purpose: Cement Surface Casing							
Well Type: Development Well			Job Type: Cement Surface Casing				
Sales Person: HARTLEY, RICHARD			Srv Supervisor: CALDWELL, JEFFREY			MBU ID Emp #: 369111	

Job Personnel

HES Emp Name	Exp Hrs	Emp #	HES Emp Name	Exp Hrs	Emp #	HES Emp Name	Exp Hrs	Emp #
CALDWELL, JEFFREY S	7:59	369111	MILLER, KEVIN Paul	7:59	443040	PONDER, THOMAS Lynn	7:59	427112
SCOTT, DALLAS D	7:59	334750	SMITH, DUSTIN Michael	7:59	418015			

Equipment

HES Unit #	Distance-1 way	HES Unit #	Distance-1 way	HES Unit #	Distance-1 way	HES Unit #	Distance-1 way
10214529C	120 mile	10533645	120 mile	10592964	120 mile	10719782	120 mile
10951250	120 mile	10969711	120 mile				

Job Hours

Date	On Location Hours	Operating Hours	Date	On Location Hours	Operating Hours	Date	On Location Hours	Operating Hours
08/17/08	7:59	1.25						

TOTAL Total is the sum of each column separately

Job				Job Times			
Formation Name				Date	Time	Time Zone	
Formation Depth (MD)	Top	Bottom		Called Out	17 - Aug - 2008	11:30	MST
Form Type	BHST			On Location	17 - Aug - 2008	16:00	MST
Job depth MD	1754. ft		Job Depth TVD	1754. ft	Job Started	17 - Aug - 2008	21:23
Water Depth	Wk Ht Above Floor		5. ft	Job Completed	17 - Aug - 2008	22:25	MST
Perforation Depth (MD)	From	To		Departed Loc	17 - Aug - 2008	23:59	MST

Well Data

Description	New / Used	Max pressure psig	Size in	ID in	Weight lbm/ft	Thread	Grade	Top MD ft	Bottom MD ft	Top TVD ft	Bottom TVD ft
12 1/4 Open Hole				12.25					1765		
8.625 Surface Casing	Unknown		8.625	7.921	32.				1754		

Sales/Rental/3rd Party (HES)

Description	Qty	Qty uom	Depth	Supplier
PLUG,CMTG,TOP,8 5/8,HWE,7.20 MIN/8.09 MA	1	EA		

Tools and Accessories

Type	Size	Qty	Make	Depth	Type	Size	Qty	Make	Depth	Type	Size	Qty	Make
Guide Shoe					Packer					Top Plug	8 5/8	1	
Float Shoe					Bridge Plug					Bottom Plug			
Float Collar					Retainer					SSR plug set			
Insert Float										Plug Container	8 5/8	1	
Stage Tool										Centralizers			

Miscellaneous Materials

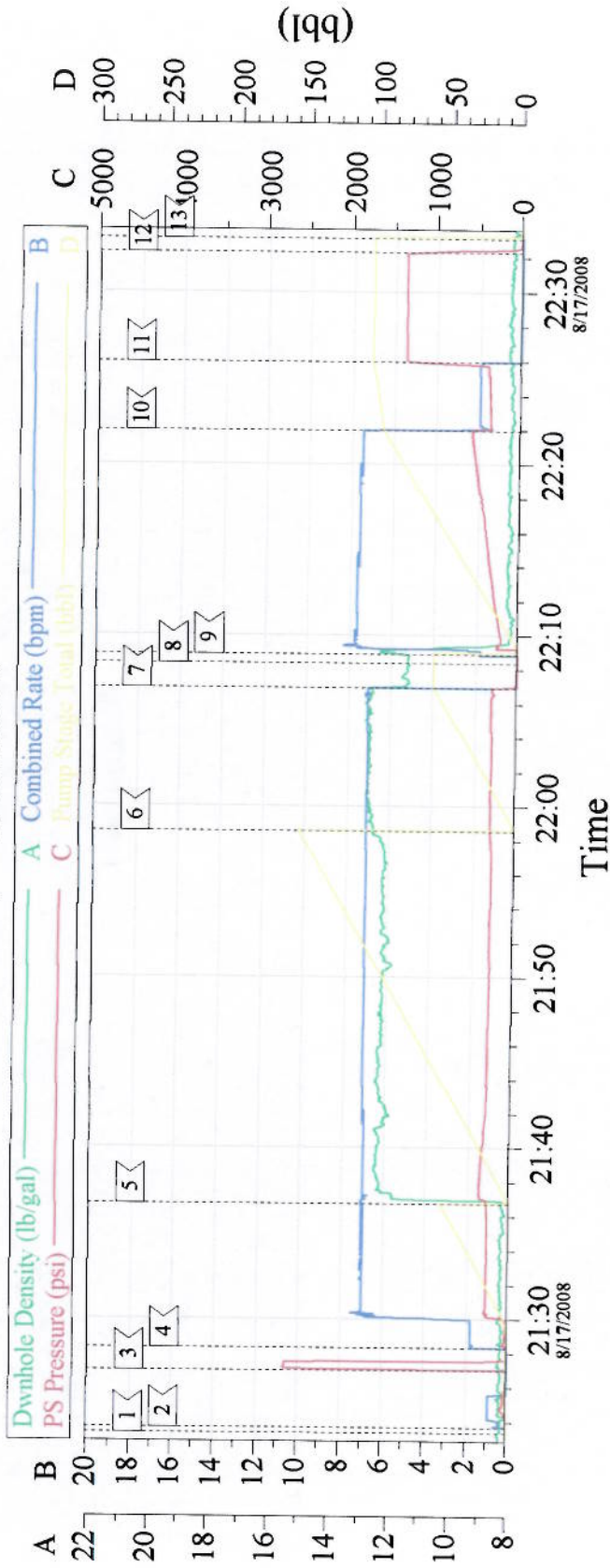
Gelling Agt	Conc	Surfactant	Conc	Acid Type	Qty	Conc	%
Treatment Fld	Conc	Inhibitor	Conc	Sand Type	Size	Qty	

Fluid Data									
Stage/Plug #: 1									
Fluid #	Stage Type	Fluid Name	Qty	Qty uom	Mixing Density lbm/gal	Yield ft ³ /sk	Mix Fluid Gal/sk	Rate bbl/min	Total Mix Fluid Gal/sk
1	DYED AND POLYFLAKE SPACER		20.0	bbl	8.33	.0	.0	7.0	
2	Lead Cement	VERSACEM (TM) SYSTEM (452010)	365.0	sacks	12.3	2.37	13.76	7.0	13.45
	0.125 lbm	POLY-E-FLAKE (101216940)							
	0.25 %	D-AIR 3000 (101007446)							
	13.448 Gal	FRESH WATER							
3	Tail Cement	VERSACEM (TM) SYSTEM (452010)	170.0	sacks	12.8	2.11	11.79	7.0	11.48
	0.125 lbm	POLY-E-FLAKE (101216940)							
	0.25 %	D-AIR 3000 (101007446)							
	11.483 Gal	FRESH WATER							
4	H2O DISPLACEMENT		108.7	bbl	8.33	.0	.0	8.0	
Calculated Values		Pressures		Volumes					
Displacement	108.7	Shut In: Instant		Lost Returns	0	Cement Slurry	218.6	Pad	
Top Of Cement	SURFACE	5 Min		Cement Returns	49	Actual Displacement	107	Treatment	
Frac Gradient		15 Min		Spacers	50	Load and Breakdown		Total Job	375.6
Rates									
Circulating	RIG	Mixing	7	Displacement	8	Avg. Job	7.5		
Cement Left In Pipe	Amount	45 ft	Reason	Shoe Joint					
Frac Ring # 1 @	ID	Frac ring # 2 @	ID	Frac Ring # 3 @	ID	Frac Ring # 4 @	ID		
The Information Stated Herein Is Correct				Customer Representative Signature					

Cementing Job Log

Activity Description	Date/Time	Cht #	Rate bbl/ min	Volume bbl		Pressure psig		Comments
				Stage	Total	Tubing	Casing	
Pump Displacement	08/17/2008 22:08		7	108.7	107		560.0	H2O
Slow Rate	08/17/2008 22:21		2	98	98		360.0	
Bump Plug	08/17/2008 22:25		2	108.7	107		1360.0	PLUG BUMPED
Check Floats	08/17/2008 22:32							FLOATS HELD. 1 BBL BACK. GOOD CIRCULATION THROUGH OUT JOB.
End Job	08/17/2008 22:33							THANK YOU FOR CHOOSING HALLIBURTON JEFF CALDWELL AND CREW.

8 5/8" Surface



Event Log

Intersection		Intersection	
1 < START JOB	21:23:21	2 < PRIME LINES	21:23:41
3 < TEST LINES	21:27:00	4 < PUMP SPACER	21:28:19
5 < PUMP LEAD CEMENT	21:36:44	6 < PUMP TAIL CEMENT	21:58:32
7 < SHUT DOWN	22:06:55	8 < DROP TOP PLUG	22:08:22
9 < PUMP DISPLACEMENT	22:08:54	10 < SLOW RATE	22:21:59
11 < BUMP PLUG	22:25:57	12 < CHECK FLOATS/FLOATS HELD	22:32:19
13 < END JOB	22:33:08		

Customer: Chevron	Job Date: 08/17/08	Ticket #: 6109384
Well Number: SKR 598-36-AV-11	Job Type: 8 5/8 Surface	ADC Used: Yes
Supervisor: Jeff Caldwell	Company Rep.: Ken Japp	Pump/Operator Elite 12 Kevin Miller