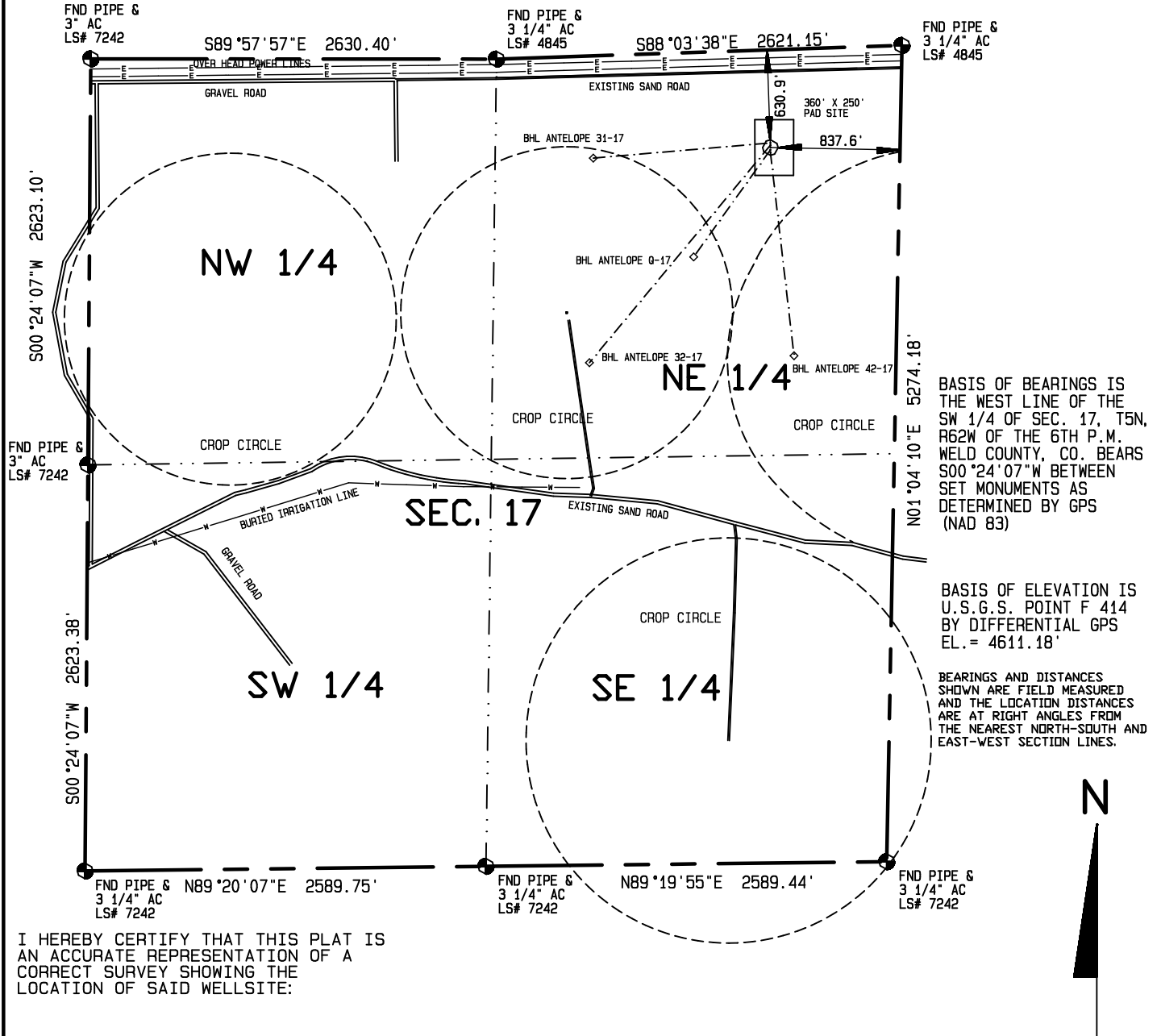
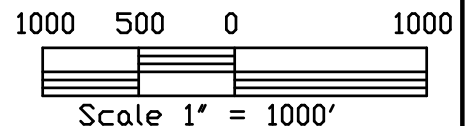


SURFACE HOLE LOCATIONS						BOTTOM HOLE LOCATIONS					
WELL	LAT.	LONG.	EL.	FNL	FEL	WELL	LAT.	LONG.	FNL	FEL	
31-17	40.40514°	104.34068°	4707.20'	600.9'	838.1'	31-17	40.40491°	104.34478°	660.0'	1980.0'	
32-17	40.40509°	104.34068°	4706.94'	615.8'	837.8'	32-17	40.40128°	104.34494°	1980.0'	1980.0'	
41-17	40.40505°	104.34068°	4706.78'	630.9'	837.6'	41-17	40.40128°	104.34494°	630.9'	837.6'	
Q-17	40.40501°	104.34069°	4706.52'	645.5'	837.8'	Q-17	40.40313°	104.34250°	1320.0'	1320.0'	
42-17	40.40497°	104.34069°	4706.25'	660.4'	837.8'	42-17	40.40136°	104.34019°	1980.0'	660.0'	



I HEREBY CERTIFY THAT THIS PLAT IS AN ACCURATE REPRESENTATION OF A CORRECT SURVEY SHOWING THE LOCATION OF SAID WELLSITE:



Dan Griggs PLS# 38018

**CONTRACT SURVEYORS, LTD.**  
COMPLETE SURVEYING AND GLOBAL POSITIONING

2133 SOUTH BELLAIRE STREET #14  
DENVER COLORADO 80222  
(303) 756-3695



MULTIPLE WELL PLAN  
PAGE 1

CSL# 11104-26

DATE OF FIELD WORK:

17 MAY 2011

DATE OF DRAWING:

19 MAY 2011

ANTELOPE 41-17 MULTI-WELL PLAN

NE 1/4, NE 1/4 SEC. 17, T5N, R62W

BONANZA CREEK ENERGY OPERATING COMPANY, LLC

WELD COUNTY, COLORADO