

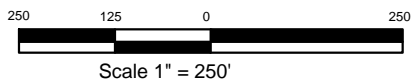
A field road is 450' North of location.

Overhead powerlines are 497' North of location.

Irrigation pivots are 390' SE of location and 650' SW of location.



**BONANZA CREEK ENERGY OPERATING COMPANY, LLC**



Drawing Title:

**Location Drawing**

Drawing Date: 05/18/2011

Well/Location Name:

**Antelope 41-17**

Surface Location:

NENE Sec 17, T5N, R62W, 6th PM  
Lat. 40.40505 Long. -104.34068  
631' FNL 838' FEL

Drawn By: ksc