

CONFIDENTIALITY NOTES:

The information contained in this plat is legally privileged and confidential information intended only for the use of the recipients. If you are not the intended recipients, you are hereby notified that any use, dissemination, distribution or copying of this information is strictly prohibited.



**WILLIAM H. SMITH
& ASSOCIATES P.C.**

SURVEYING CONSULTANTS
150 EAST SECOND NORTH PHONE: 307-875-3638
GREEN RIVER, WY 307-875-3639
www.wsmithpc.com

LEGEND

400' PERIMETER
PROPOSED ACCESS
SECTION LINE
1/16 LINE
EXISTING FENCE

LOCATION:

PAWNEE CREEK
9-57-18-1B
WITHIN THE SW/4
SW/4 OF SECTION 18,
T 9 N, R 57 W,
6TH PM.
WELD COUNTY,
COLORADO

MARATHON OIL COMPANY
PO BOX 3128, HOUSTON TX, 77253
5555 SAN FELIPE, HOUSTON TX, 77056

LOCATION DRAWING

SCALE: 1"=200'
DATE: 04/21/2011

EXHIBIT "C"
SHEET 2 OF 14

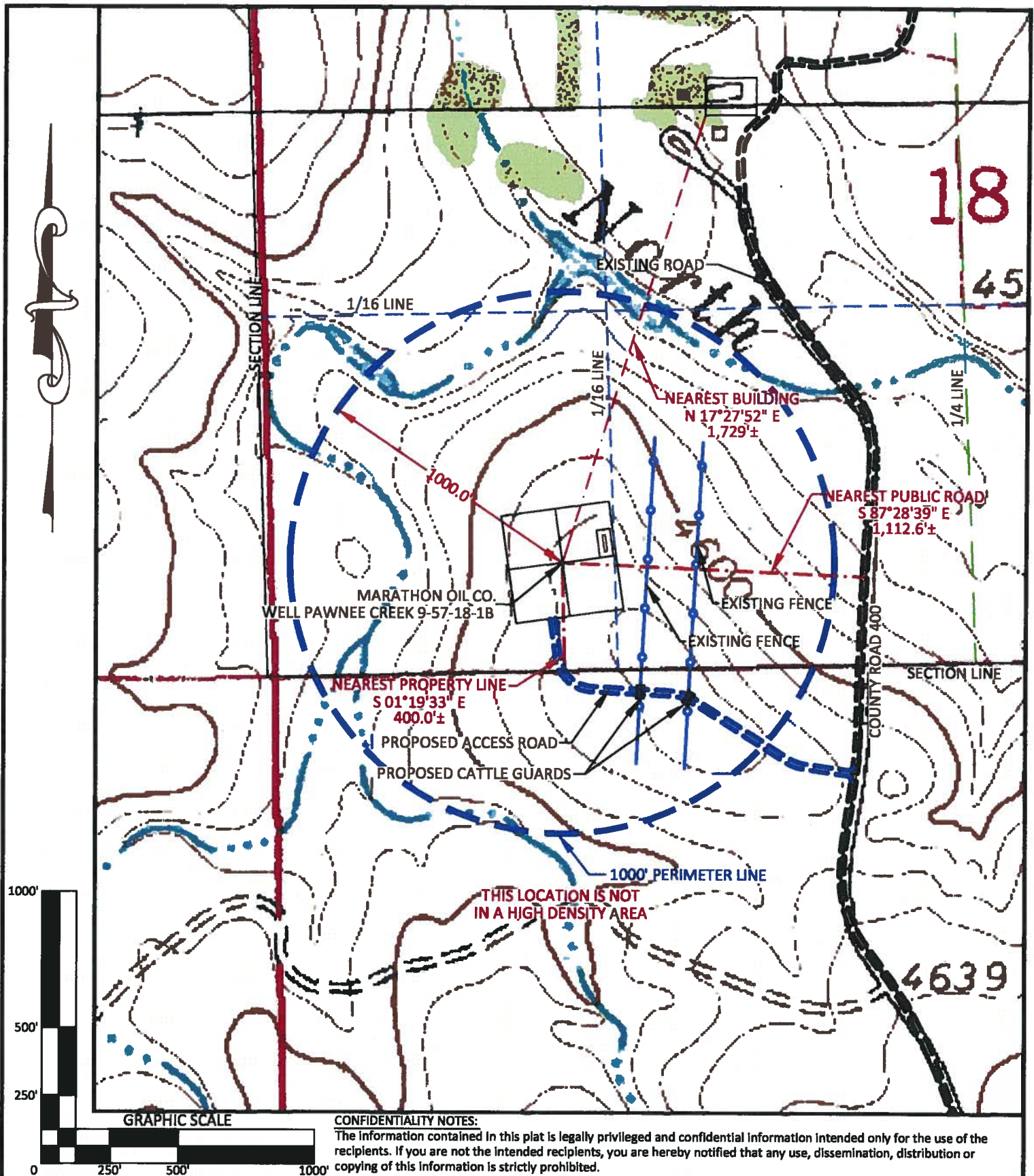
DRAWN BY: RAW

CHECKED BY: WHD

PROJECT NO: 957181B

JOB NO: 2011001

REVISIONS:



CONFIDENTIALITY NOTES:

The information contained in this plat is legally privileged and confidential information intended only for the use of the recipients. If you are not the intended recipients, you are hereby notified that any use, dissemination, distribution or copying of this information is strictly prohibited.



**WILLIAM H. SMITH
& ASSOCIATES P.C.**

SURVEYING CONSULTANTS
350 EAST SECOND NORTH PHONE: 307-875-3638
GREEN RIVER, WY 307-875-3639
www.wsmithpc.com

DRAWN BY: RAW

CHECKED BY: WHD

PROJECT NO: 957181B

JOB NO: 2011001

REVISIONS:

LEGEND

1000' RADIUS
EXISTING FENCE
PROPOSED ACCESS
EXISTING ROAD
SECTION LINE
1/16 LINE
1/4 LINE
TWO TRACK

LOCATION:

PAWNEE CREEK
9-57-18-1B
WITHIN THE SW/4
SW/4 OF SECTION 18,
T 9 N, R 57 W,
6TH PM.
WELD COUNTY,
COLORADO

MARATHON OIL COMPANY
PO BOX 3128, HOUSTON TX, 77253
5555 SAN FELIPE, HOUSTON TX, 77056

CULTURE MAP

SCALE: 1"=500'

EXHIBIT "H"

DATE: 04/21/2011

SHEET 7 OF 14