

CONFIDENTIALITY NOTES:

The information contained in this plat is legally privileged and confidential information intended only for the use of the recipients. If you are not the intended recipients, you are hereby notified that any use, dissemination, distribution or copying of this information is strictly prohibited.



**WILLIAM H. SMITH
& ASSOCIATES P.C.**

SURVEYING CONSULTANTS
350 EAST SECOND NORTH PHONE: 307-875-3638
GREEN RIVER, WY 307-875-3639
www.wsmithpc.com

DRAWN BY: RAW

CHECKED BY: WHD

PROJECT NO: 9571818

JOB NO: 2011001

REVISIONS:

LEGEND

PROPOSED ACCESS = = = =
1/4 LINE = = = =
EXISTING ROAD = = = =
SECTION LINE = = = =
1/16 LINE = = = =
EXISTING FENCE = = = =
TWO TRACK = = = =

LOCATION:

PAWNEE CREEK
9-57-18-1B
WITHIN THE SW/4
SW/4 OF SECTION 18,
T 9 N, R 57 W,
6TH PM.
WELD COUNTY,
COLORADO

MARATHON OIL COMPANY
PO BOX 3128, HOUSTON TX, 77253
5555 SAN FELIPE, HOUSTON TX, 77056

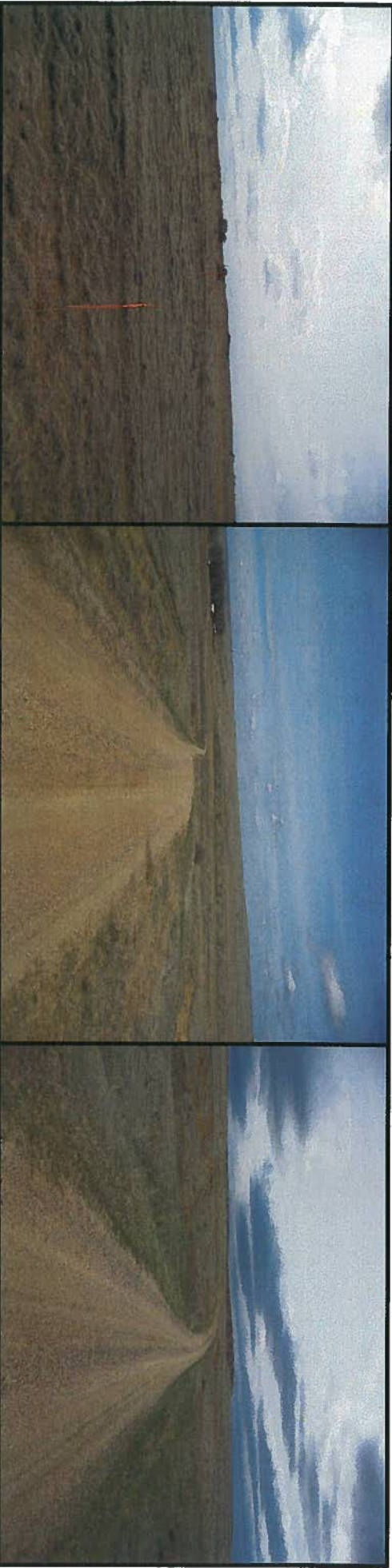
ACCESS ROAD MAP

SCALE: 1"=500'

EXHIBIT "E"

DATE: 04/21/2011

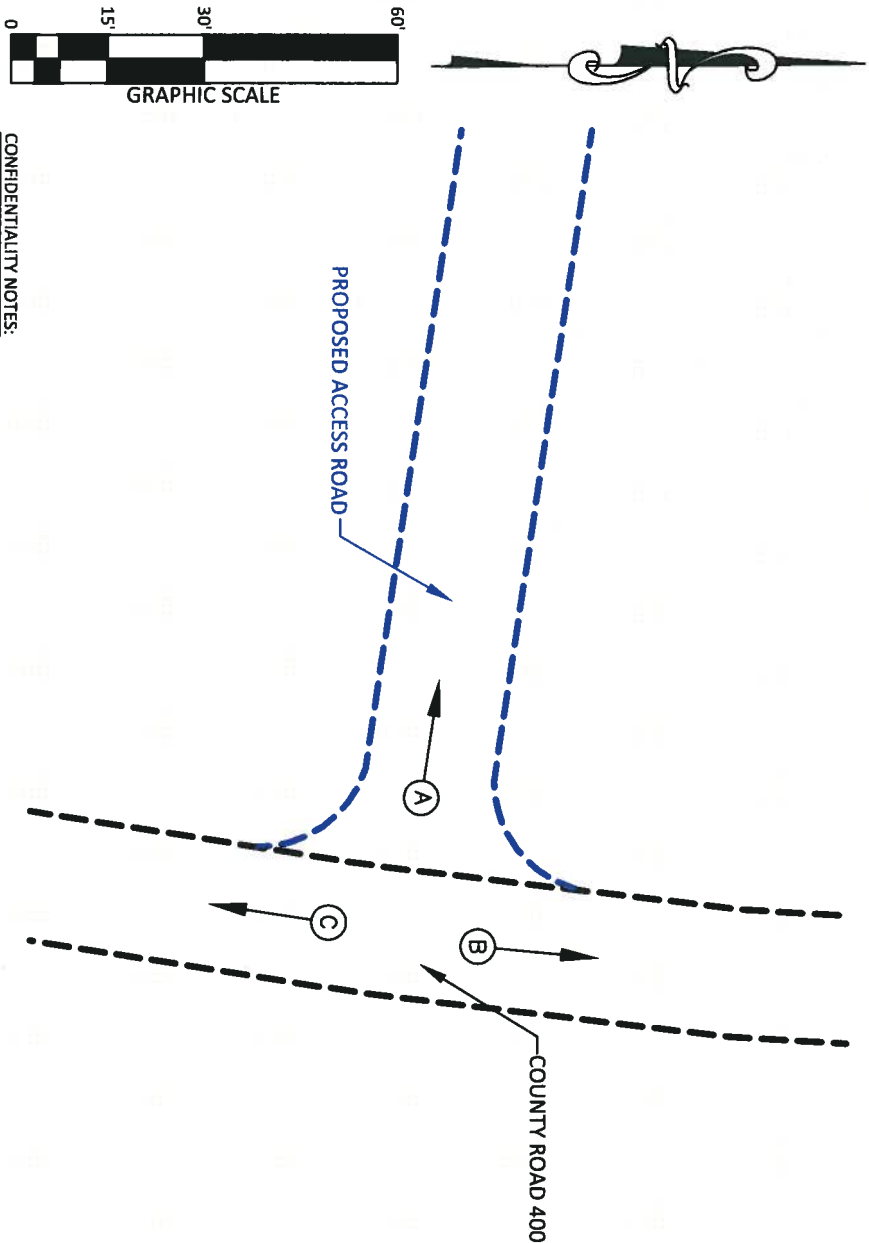
SHEET 4 OF 14



(A) PHOTO TAKEN TO THE WEST

(B) PHOTO TAKEN TO THE NORTH

(C) PHOTO TAKEN TO THE SOUTH



CONFIDENTIALITY NOTES:
The information contained in this plat is legally privileged and confidential information intended only for the use of the recipients. If you are not the intended recipients, you are hereby notified that any use, dissemination, distribution or copying of this information is strictly prohibited.



**WILLIAM H. SMITH
& ASSOCIATES P.C.**
SURVEYING CONSULTANTS
250 EAST SECOND NORTH
GREEN RIVER, WY. 81501
PHONE: 307-875-3638
FAX: 307-875-3639
www.wsmithpc.com

MARATHON OIL COMPANY
PO BOX 3128, HOUSTON TX, 77253
5555 SAN FELIPE, HOUSTON TX, 77056

PAWNEE CREEK 9-57-18-1B
WITHIN THE SW/4 SW/4 OF SECTION 18,
T 9 N, R 57 W, 6TH PM.
WELD COUNTY, COLORADO

DRAWN BY: CED	CHECKED BY: WHD
PROJECT NO: 957181B	JOB NO: 2011001
SCALE: 1"=30'	EXHIBIT "A"
DATE: 04/27/2011	SHEET 1 OF 1
REVISIONS:	