

Downhole Schematic for Knox 2-13 (OD11)



Project :South Piceance

API # :05045120200000

Surface Location : NWNW-11-8S-96W 6th PM

Area : Orchard

County :GARFIELD

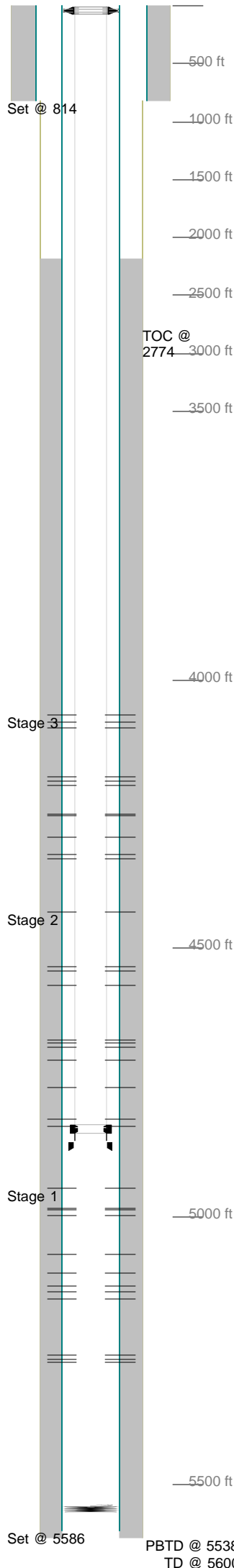
BHL : SWSW-2-8S-96W 6th PM

As Of : 03/02/2007

GL : 5634.5 ft

KB to GL : 14.0 ft

KB : 5648.5 ft



Casing Details

Section	Hole	Casing	Mass	Set At	Length	Thread	Grade	Description
Surface	12.250	8.625	0	814	2	ST&C	J-55	GUIDE SHOE
		8.625	24	813	45	ST&C	J-55	CASING JT
		8.625	0	768	2	ST&C	J-55	FLOAT SHOE
		8.625	24	766	311	ST&C	J-55	CASING JTS
		8.625	32	455	457	ST&C	J-55	CASING JTS
Production	7.875	4.5	0	5,586	2	LT&C	I-80	Shoe
		4.5	11.6	5,585	42	LT&C	I-80	Casing
		4.5	0	5,542	2	LT&C	I-80	Float
		4.5	11.6	5,541	843	LT&C	I-80	Casing
		4.5	11.6	4,698	32	LT&C	I-80	Marker Joint
		4.5	11.6	4,666	843	LT&C	I-80	Casing
		4.5	11.6	3,823	32	LT&C	I-80	Marker Joint
		4.5	11.6	3,791	3,784	LT&C	I-80	Casing

Cement Details

Section	Sequence	Top	Density	Blend / Additives
Surface	Lead	0	15.8	Class G / 2% CaC12+Cello Flake
Production	Lead	2,188	13.0	Premium Lite Hi Strength / +.05%bwoc Static Free + .25lbs/sk Cello Flake + .3%bwoc CD-32 + 2lbs/sk Kol Seal + .7% bwoc FL-52 + 35%bwoc Sodium Metasilicate + .2% bwoc BA-59 + .5 gals/100sk FP-13L + 92.2% Fresh Water

Tubing and Downhole Equipment

O.D.	Length	Depth	Description
0.000	12.00	12.00	Landed below 14' KB
4.063	0.20	12.20	4 1/16" 10m X 2 3/8" eue hanger
2.594	0.71	12.91	2 3/8" N80 saver sub
2.375	4,817.12	4,830.03	155 jnts 2 3/8" N80 4.7# eue tbg
3.063	0.88	4,830.91	1.81" F profile Nipple
2.375	31.22	4,862.13	1 jnt 2 3/8" N80 4.7# eue tbg
3.250	0.92	4,863.05	Top of POBS
3.875	1.20	5,538.00	Bottom of POBS

Perforations

Stage	Date	From	To	Shots
Stage 1	02/05/2007	4,684	4,685	2
		4,678	4,679	2
		4,672	4,673	2
		4,569	4,570	2
		4,542	4,543	2
		5,155	5,156	2
		5,141	5,142	2
		5,131	5,132	2
		5,107	5,108	2
		5,072	5,073	2
Stage 2	02/05/2007	4,998	4,999	2
		4,989	4,990	2
		4,984	4,985	2
		4,948	4,949	2
		4,198	4,199	2
		4,190	4,191	2
		4,182	4,183	2
		4,090	4,091	2
		4,078	4,079	2
		4,066	4,067	2
Stage 3	02/05/2007	4,334	4,336	4
		4,326	4,327	2
		4,294	4,295	2
		4,254	4,255	2

Frac Summary

Stage 1 : 4,948 - 5,272, 24 - 0.340" shots, 4834 bbls of Slickwater, 184190 lbs of 20-40 20/40 WHITE Report
 Date: 02/06/2007
 Stage 2 : 4,434 - 4,833, 22 - 0.340" shots, 2923 bbls of Slickwater, 113776 lbs of 20-40 20/40 WHITE Report
 Date: 02/06/2007
 Stage 3 : 4,066 - 4,336, 24 - 0.340" shots, 5442 bbls of Slickwater, 210843 lbs of 20-40 20/40 WHITE Report
 Date: 02/07/2007

Comments

Braden Pressure 0 MV 4984-5272 24 holes
 MV II 4434-4833 22 holes
 MV III 4056-4366 24 holes BHP 35