

IMPROVEMENT NOTE:

See addendum to legal plat (sheet 2a)  
for visible improvements within 400' of  
the proposed well pad.

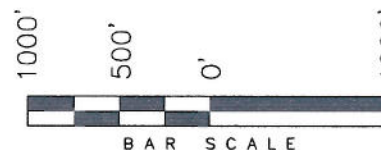
**T6S, R92W, 6th P.M.**

**ENCANA OIL & GAS (USA) INC**

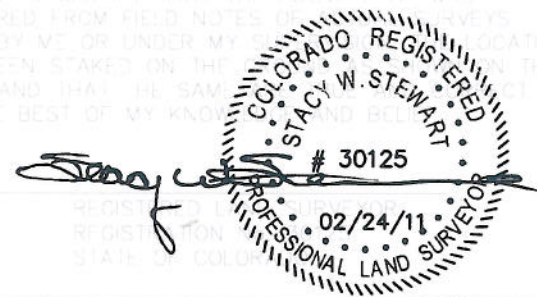
WELL LOCATION, ENCANA FEDERAL  
24-10D (K19CNE), LOCATED AS SHOWN  
IN LOT 3 OF SECTION 19, T6S, R92W,  
6th P.M. GARFIELD COUNTY, COLORADO.

NOTES:

1. Well footages are measured at right angles to the Section Lines.
2. Bearings are based on Global Positioning Satellite observations.
3. G.P.S. Operator:  
C.D. SLAUGH, (PDOP) = 2.4



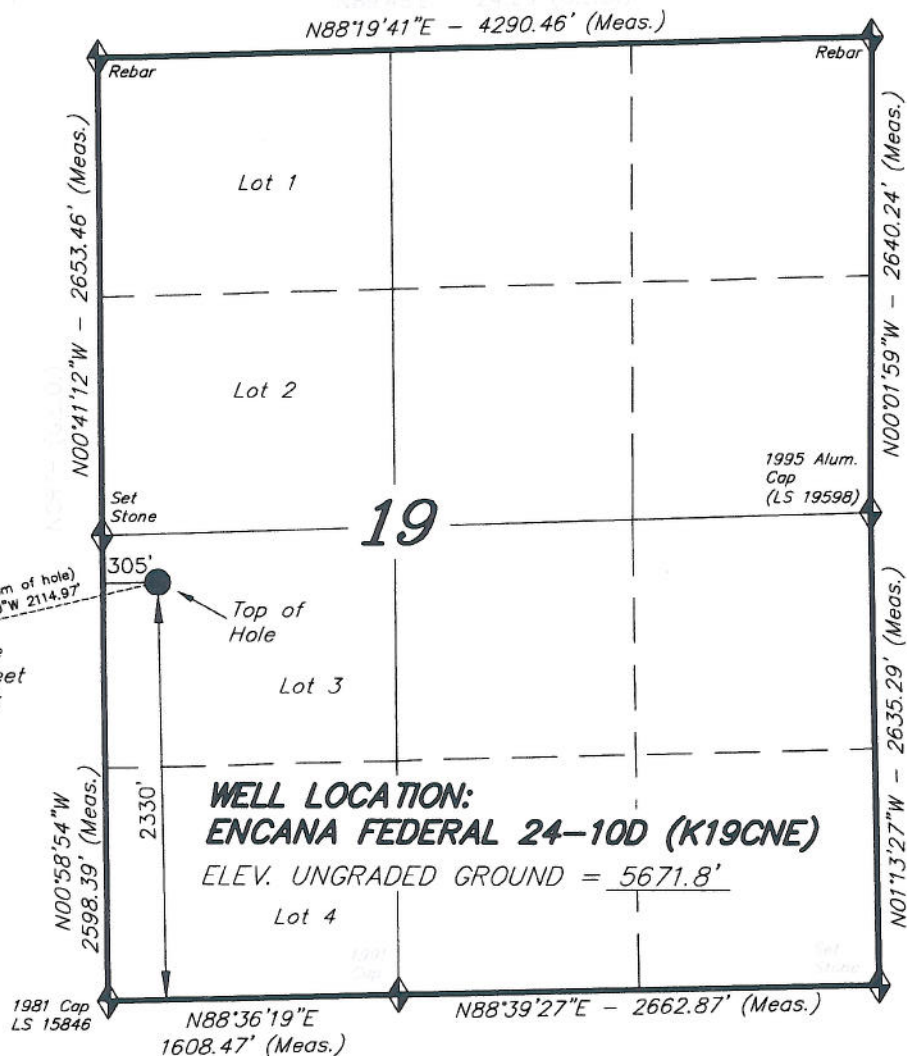
THIS IS TO CERTIFY THAT THE ABOVE IS A TRUE AND CORRECT COPY OF THE ORIGINAL SURVEY RECORD AS PREPARED FROM FIELD NOTES OF THE SURVEY MADE BY ME OR UNDER MY CLOSE PERSONAL SUPERVISION AND THAT THE SAME HAS BEEN STAKED ON THE GROUND IN ACCORDANCE WITH THE PLAT, AND THAT I HAVE SIGNED THE PLAT TO THE BEST OF MY KNOWLEDGE AND BELIEF.



**TRI STATE LAND SURVEYING & CONSULTING**

180 NORTH VERNAL AVE. - VERNAL, UTAH 84078  
(435) 781-2501

DATE SURVEYED: 11-08-10	SURVEYED BY: C.D.S.	SHEET <b>2k</b> OF 11
DRAWN: 12-23-10	DRAWN BY: L.C.S.	
REVISED: L.C.S. 02-24-11	SCALE: 1" = 1000'	



1981 Cap  
LS 15846

N88°36'19"E  
1608.47' (Meas.)

N88°39'27"E - 2662.87' (Meas.)

N01°13'27"W - 2635.29' (Meas.)

N00°01'59"W - 2640.24' (Meas.)

N88°19'41"E - 4290.46' (Meas.)

N00°41'12"W - 2653.46' (Meas.)

N00°58'54"W  
2598.39' (Meas.)

**WELL LOCATION:  
ENCANA FEDERAL 24-10D (K19CNE)**

ELEV. UNGRADED GROUND = 5671.8'

Lot 4

Lot 3

Lot 2

Lot 1

**NAD 83 (SURFACE LOCATION)**

LATITUDE = 39°30'40.35"  
(39.511208)

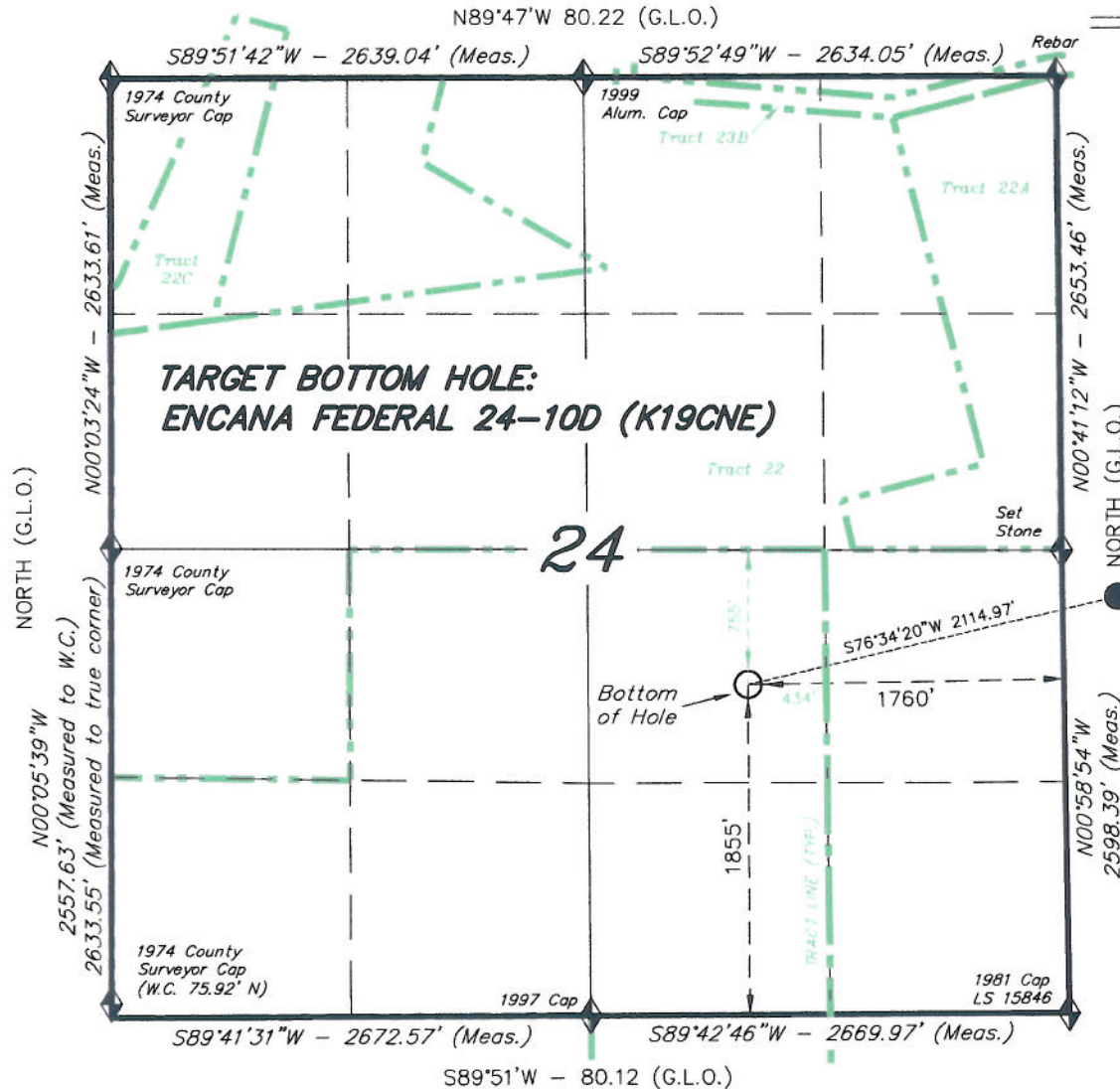
LONGITUDE = 107°42'49.86"  
(107.713849)

**SECTION CORNERS LOCATED**

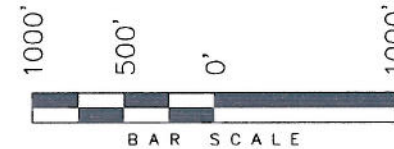
Basis of elevation is the 1981 2" triangulation  
station, 39°31'53.89" N Lat. & 107°47'07.19" W  
Long. (NAD 83). Elevation = 5323.3' (NAVD83).

*T6S, R93W, 6th P.M.*

*ENCANA OIL & GAS (USA) INC*



TARGET BOTTOM HOLE, ENCANA FEDERAL  
24-10D (K19CNE), LOCATED AS SHOWN  
IN THE NW 1/4 SE 1/4 OF SECTION 24,  
T6S, R93W, 6th P.M. GARFIELD COUNTY,  
COLORADO.



NOTES:

1. Well footages are measured at right angles to the Section Lines.
2. Bearings are based on Global Positioning Satellite observations.

Top of See  
Hole Sheet  
2k

THIS IS TO CERTIFY THAT THE ABOVE PLAT WAS PREPARED FROM FIELD NOTES OF ~~ACTUAL~~ SURVEYS MADE BY ME OR UNDER MY SUPERVISION. THE LOCATION HAS BEEN STAKED ON THE GROUND AS SHOWN ON THE PLAT, AND THAT THE SAME ARE TRUE AND CORRECT TO THE BEST OF MY KNOWLEDGE AND BELIEF.

REGISTERED LAND SURVEYOR  
REGISTRATION No. 30125  
STATE OF COLORADO

**TRI STATE LAND SURVEYING & CONSULTING**

180 NORTH VERNAL AVE. - VERNAL, UTAH 84078  
(435) 781-2501

DATE SURVEYED: 11-08-10	SURVEYED BY: C.D.S.	SHEET 2kk OF 11
DATE DRAWN: 12-23-10	DRAWN BY: L.C.S.	
REVISED: L.C.S. 02-24-11	SCALE: 1" = 1000'	

 = SECTION CORNERS LOCATED

Basis of elevation is the Rifle 2 Triangulation Station. 39°31'53.80" N Lat. & 107°47'07.78" W Long. (NAD 83). Elevation = 5323.1' (NAVD88).