

NOTE: THE EARTH QUANTITIES ON THIS DRAWING ARE ESTIMATED AND THE USE OF SAID QUANTITIES IS AT THE RESPONSIBILITY OF THE USER.

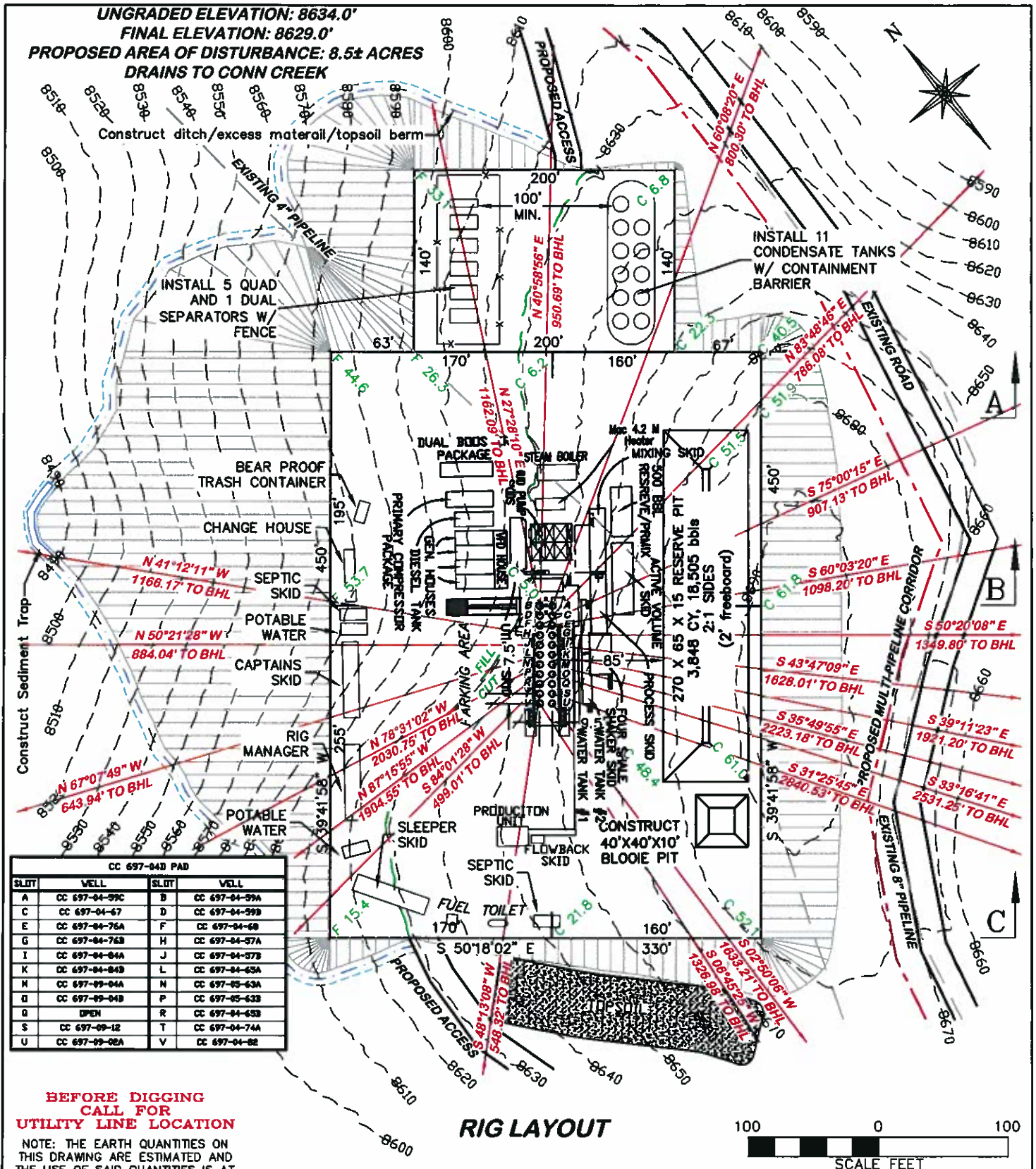


**(307) 362-5028**

**EXHIBIT 2**

ITEM	CUT	FILL	TOPSOIL	EXCESS
PAD	157,481 CY	113,979 CY	3,269 CY	40,233 CY
PIT	5,167 CY			5,167 CY
TOTALS	162,648 CY	113,979 CY	3,269 CY	45,400 CY





**BEFORE DIGGING  
CALL FOR  
UTILITY LINE LOCATION**

NOTE: THE EARTH QUANTITIES ON THIS DRAWING ARE ESTIMATED AND THE USE OF SAID QUANTITIES IS AT THE RESPONSIBILITY OF THE USER.

## RIG LAYOUT

CC 697-04D PAD



**CONSTRUCTION LAYOUT DRAWING 2 OF 5**

## RIG LAYOUT

**OXY USA WTP LP**

**CASCADE CREEK 697-04-57A, 57B, 59A, 59B,  
59C, 65A, 65B, 67, 68, 74A, 76A, 76B, 82, 84A,  
84B, 05-63A, 63B, 09-02A, 04A, 04B, 12  
NWSW SECTION 4, T. 6 S., R. 97 W., 6th P.M.,  
GARFIELD COUNTY, COLORADO**

**RIFFIN & ASSOCIATES, INC.**

**(307) 362-5028**

**1414 ELK ST., ROCK SPRINGS, WY 82901**

**DATE: 4/13/11 - DEH**

**SCALE: N/A**

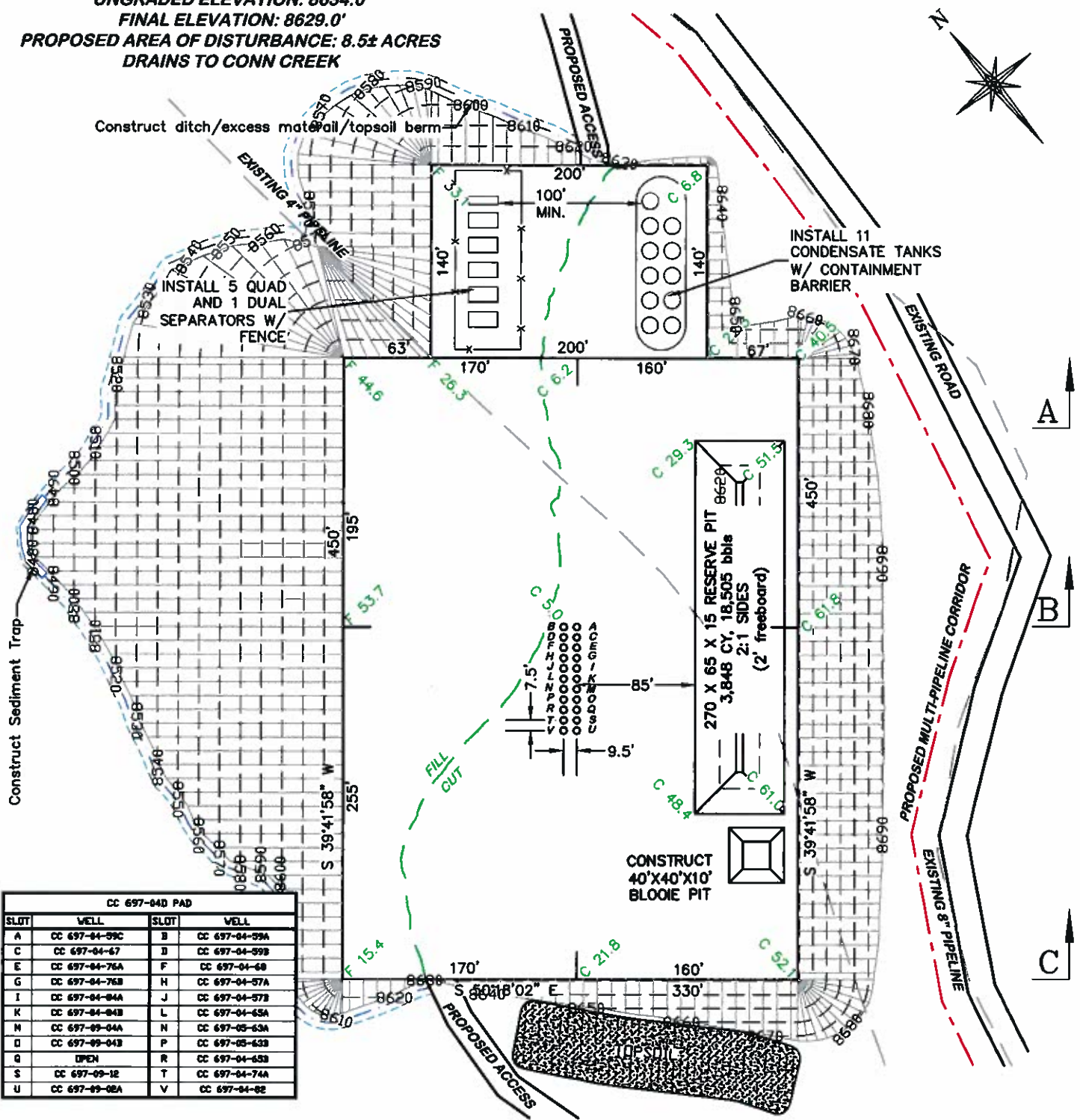
**REVISED: 4/30/11 - DEH**

**DRG JOB No. 18310**

**EXPANDED PAD 50'**

**EXHIBIT 2A**

UNGRADED ELEVATION: 8634.0'  
 FINAL ELEVATION: 8629.0'  
 PROPOSED AREA OF DISTURBANCE: 8.5± ACRES  
 DRAINS TO CONN CREEK

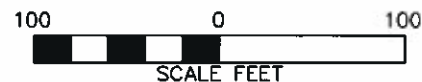


**BEFORE DIGGING  
 CALL FOR  
 UTILITY LINE LOCATION**

NOTE: THE EARTH QUANTITIES ON  
 THIS DRAWING ARE ESTIMATED AND  
 THE USE OF SAID QUANTITIES IS AT  
 THE RESPONSIBILITY OF THE USER.

## DESIGN CONTOURS

CC 697-04D PAD



(307) 362-5028

**RIFFIN & ASSOCIATES, INC.**  
 1414 ELK ST., ROCK SPRINGS, WY 82901

DATE: 4/13/11 - DEH

SCALE: 1" = 100'

REVISED: 4/30/11 - DEH

DRG JOB No. 18310

EXPANDED PAD 50'

EXHIBIT 2B

## CONSTRUCTION LAYOUT DRAWING 3 OF 5

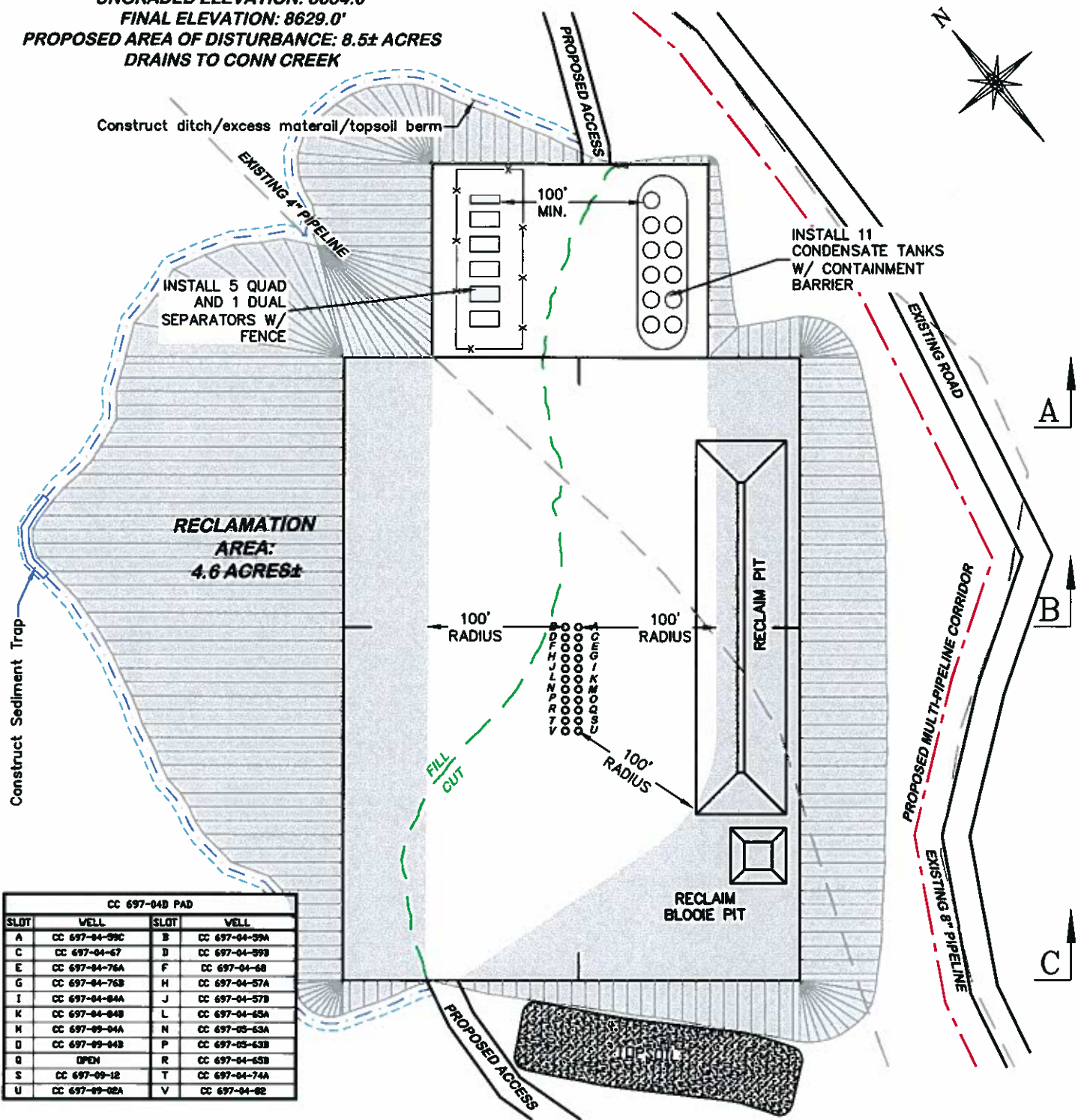
### DESIGN CONTOURS

#### OXY USA WTP LP

CASCADE CREEK 697-04-57A, 57B, 59A, 59B,  
 59C, 65A, 65B, 67, 68, 74A, 76A, 76B, 82, 84A,  
 84B, 05-63A, 63B, 09-02A, 04A, 04B, 12  
 NWSW SECTION 4, T. 6 S., R. 97 W., 6th P.M.,  
 GARFIELD COUNTY, COLORADO



UNGRADED ELEVATION: 8634.0'  
 FINAL ELEVATION: 8629.0'  
 PROPOSED AREA OF DISTURBANCE: 8.5± ACRES  
 DRAINS TO CONN CREEK



CC 697-04D PAD			
SLOT	WELL	SLOT	WELL
A	CC 697-04-59C	B	CC 697-04-59A
C	CC 697-04-67	D	CC 697-04-59B
E	CC 697-04-76A	F	CC 697-04-68
G	CC 697-04-76B	H	CC 697-04-57A
I	CC 697-04-84A	J	CC 697-04-57B
K	CC 697-04-84B	L	CC 697-04-65A
M	CC 697-05-04A	N	CC 697-05-63A
O	CC 697-05-04B	P	CC 697-05-63B
Q	OPEN	R	CC 697-04-65B
S	CC 697-09-12	T	CC 697-04-74A
U	CC 697-09-02A	V	CC 697-04-62

**BEFORE DIGGING  
 CALL FOR  
 UTILITY LINE LOCATION**

NOTE: THE EARTH QUANTITIES ON  
 THIS DRAWING ARE ESTIMATED AND  
 THE USE OF SAID QUANTITIES IS AT  
 THE RESPONSIBILITY OF THE USER.

## RECLAMATION PLAN

CC 697-04D PAD



(307) 362-5028

**RIFFIN & ASSOCIATES, INC.**

1414 ELK ST., ROCK SPRINGS, WY 82901

DATE: 4/13/11 - DEH

SCALE: 1" = 100'

REVISED: 4/30/11 - DEH

DRG JOB No. 18310

EXPANDED PAD 50'

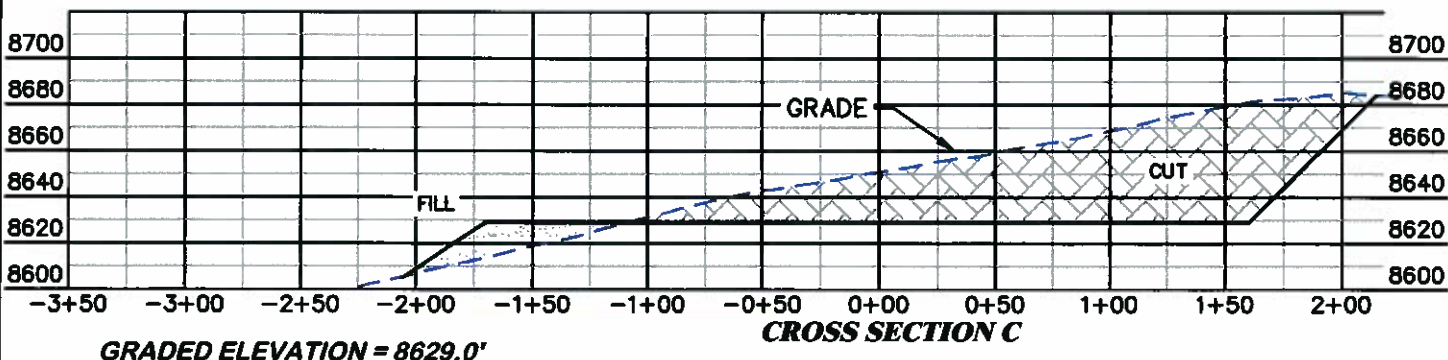
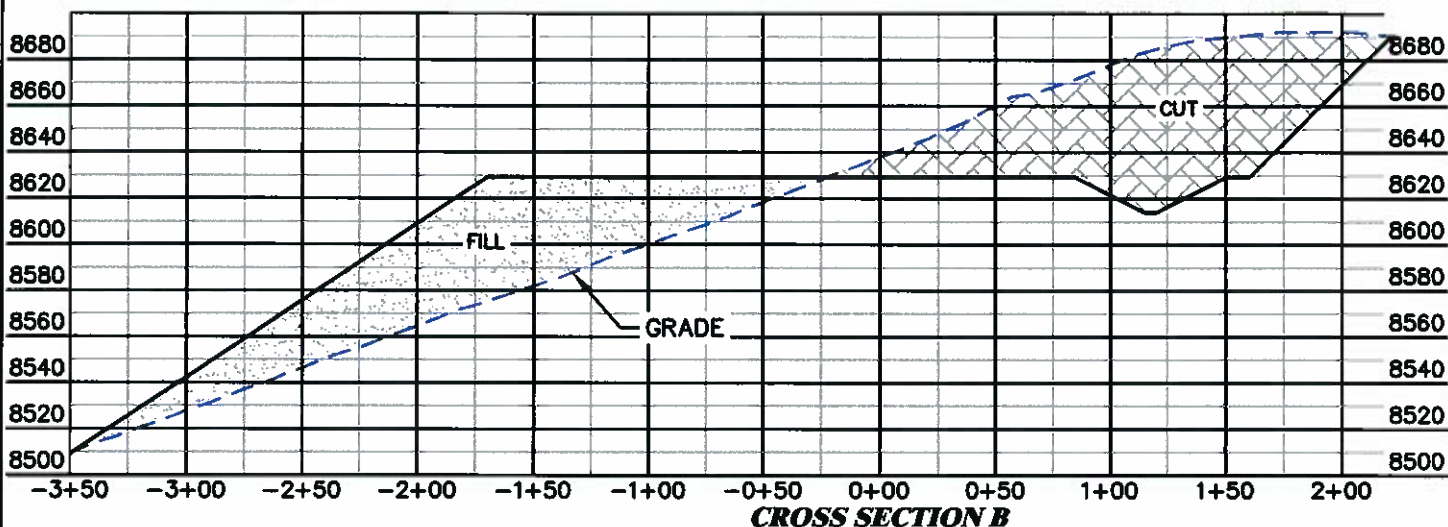
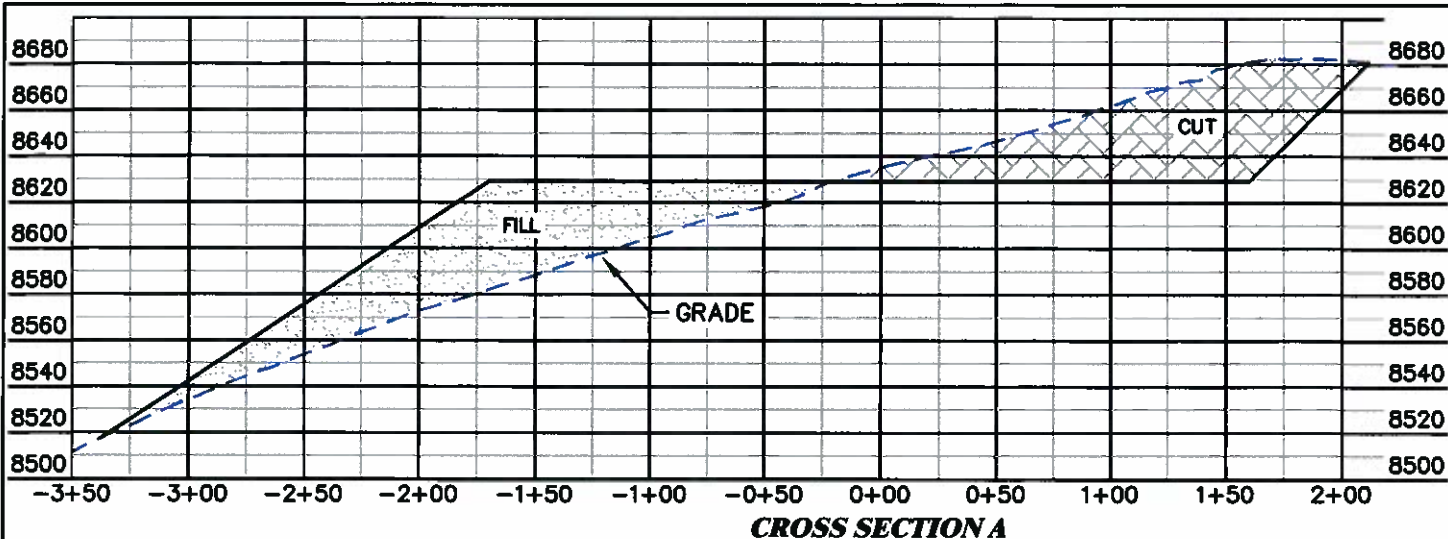
EXHIBIT 2C

### CONSTRUCTION LAYOUT DRAWING 4 OF 5

#### PROPOSED RECLAMATION

#### OXY USA WTP LP

CASCADE CREEK 697-04-57A, 57B, 59A, 59B,  
 59C, 65A, 65B, 67, 68, 74A, 76A, 76B, 82, 84A,  
 84B, 05-63A, 63B, 09-02A, 04A, 04B, 12  
 NWSW SECTION 4, T. 6 S., R. 97 W., 6th P.M.,  
 GARFIELD COUNTY, COLORADO



CC 697-04D PAD



**RIFFIN & ASSOCIATES, INC.**  
1414 ELK ST., ROCK SPRINGS, WY 82901

(307) 362-5028

DATE: 4/13/11 - DEH

HORZ. 1" = 80' VERT. 1" = 80'

REVISED: N/A

DRG JOB No. 18310

EXHIBIT 3

**CONSTRUCTION LAYOUT DRAWING 5 OF 5**

**OXY USA WTP LP**  
**CASCADE CREEK 697-04-57A, 57B, 59A, 59B, 59C, 65A,**  
**65B, 67, 68, 74A, 76A, 76B, 82, 84A, 84B, 05-63A, 63B,**  
**09-02A, 04A, 04B, 12**  
**NWSW SECTION 4, T. 6 S., R. 97 W., 6th P.M.,**  
**GARFIELD COUNTY, COLORADO**