

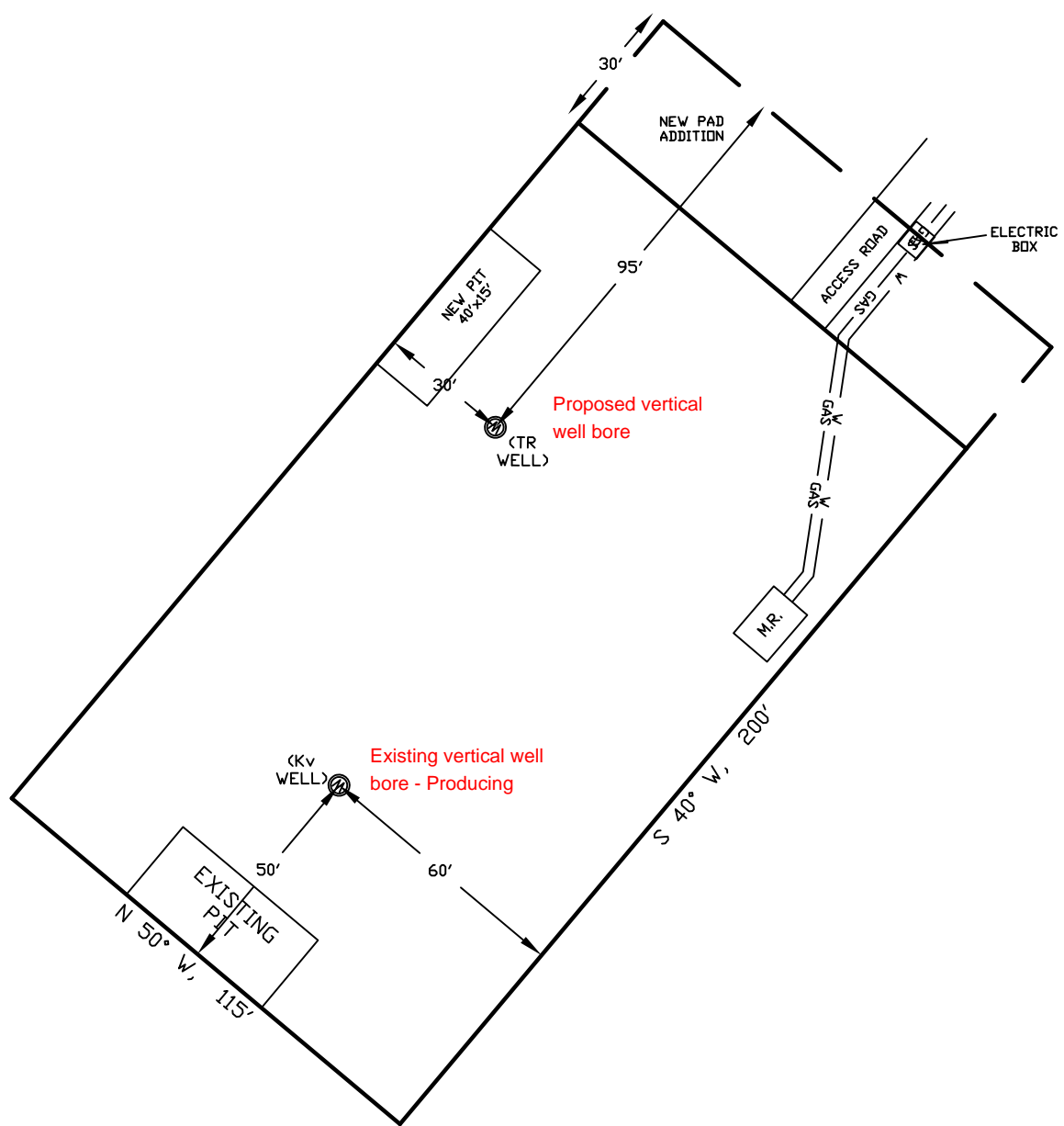
MULTI-WELL PLAN

WELLSITE/PRODUCTION EQUIPMENT LAYOUT

OPERATOR: Pioneer Natural Resources

WELL NAME: Graham 32-22 TR

SWNE of SECTION 22 TOWNSHIP 32 S, RANGE 66 W OF THE 6TH P.M., IN LAS ANIMAS COUNTY



NOTE:

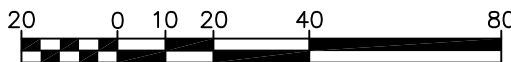
MUD AND BLOW PITS WILL BE CONVERTED TO LINED EVAPORATION PITS FOR PRODUCTION.

WELLHEADS ARE TYPICALLY PCP DRIVE HEADS

LEGEND:

- = WELLHEAD
- = EXISTING WELLPAD
- = FENCE (4 STRAND)
- = 4" GAS GATHERING LINE
- = 2" WATER LINE
- M.R. = COMBO METER RUN AND WATER/GAS SEPERATOR
- G.D.S. = GAS DRIVE SYSTEM

GRAPHIC SCALE



(IN FEET)

1 inch = 40 ft.

April 04, 2011
Date Platted

SHIELDS SURVEY L^{td.} C^{o.}
Raton, New Mexico 87740
(575)445-1232